

Consultant  
Civil ENGINEER  
Delaney-Hoffman Associates, Inc.  
726 Main Street, Suite 416  
Portland, ME 04106  
Phone (207) 775-1121  
Fax (207) 879-0888

Consultant  
ASSOCIATE ARCHITECT/STRUCTURAL ENGINEER  
SMR  
507 New Street P.O. Box 619  
Portland, Maine 04104  
Phone (207) 772-3846  
Fax (207) 772-1070

Consultant  
MECHANICAL/ELECTRICAL ENGINEER  
Burd, Ross + Abouss Consulting Engineers, LLC  
185 General George Patton Drive  
Franklin, Tennessee 37067  
Phone (615) 754-0012  
Fax (615) 754-0012  
617/242-9339

Consultant  
EQUIPMENT PLANNING  
Sloan  
185 General George Patton Drive  
Franklin, Tennessee 37067  
Phone (615) 776-3114  
Fax (615) 776-3114

Consultant  
CONSTRUCTION MANAGER  
7 Johnson Walkway  
Portland, ME 04106  
Phone (401) 456-8606  
Fax (401) 456-5516

Consultant  
Interior/General Contractor and all design and  
scope conditions of prior work by retained  
trades before proceeding with any work.

Date  
11/10/06 Final-issued for Construction

Drawn By  
MF

Scale  
1/8" = 1'-0"

Francis

Caufman

Foley

Hoffmann

Project Title  
Francis, Caulman  
Foley Hoffmann  
Architects Ltd.  
2129 Arch Street  
Philadelphia, PA 19103  
215-568-8250

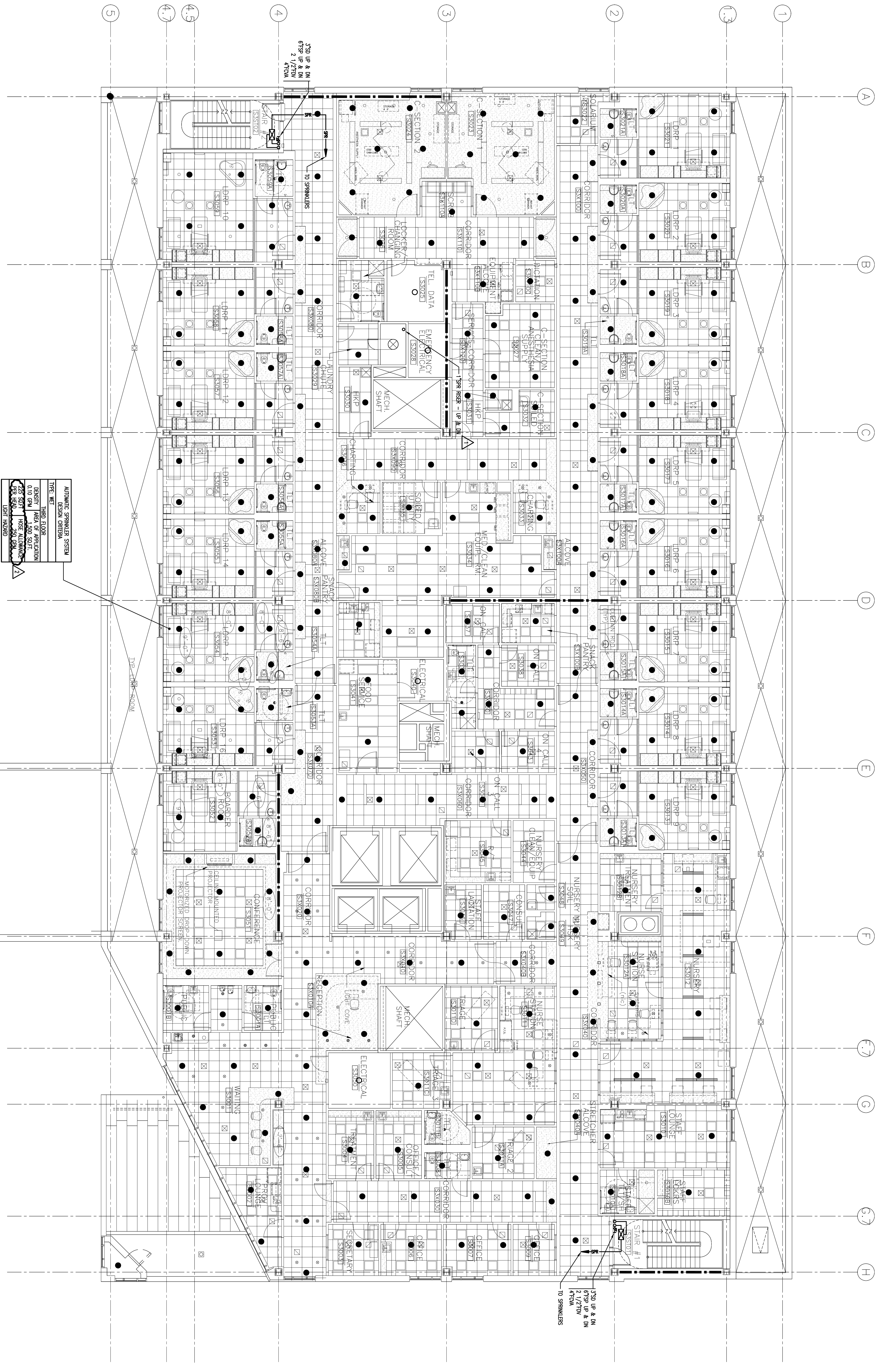
Project Title  
Mercy Health Care  
System of Maine  
FORE RIVER SHORT  
STAY HOSPITAL



Project Number  
F05-4898

Drawing Title and Number  
FIRE PROTECTION  
LEVEL 3 FLOOR PLAN

FP1.03



AUTOMATIC SPRINKLER SYSTEM  
DESIGN CRITERIA  
TYPE: WET  
DESIGN TEMPERATURE: 59°F  
DENSITY: 1.3 GPM/FT<sup>2</sup>  
AREA OF APPLICATION: 0.10 GPM/FT<sup>2</sup>  
K FACTOR: 1400 K  
2.55 SCFD  
HOSE ALLOWANCE: 300 FT  
RATED: 1750 PSI  
LIST: 1750