

Consultant
 CH2M HILL
 Daniel-Hornbom Associates, Inc.
 726 Main Street, Suite 816
 Philadelphia, PA 19103
 Phone: (207) 775-1211
 Fax: (207) 879-0888

Consultant
 ASSOCIATE ARCHITECT/STRUCTURAL ENGINEER
 SMRT
 1000 North 10th Street, Box 619
 Portland, Maine 04106
 Phone: (207) 772-3846
 Fax: (207) 772-1070

Consultant
 MECHANICAL/ELECTRICAL ENGINEER
 BIRD, BOG & AUBURN Consulting Engineers, LLC
 311 Arsenal Street
 Portland, ME 04102
 Phone: (617) 254-0012
 Fax: 617/242-9339

Consultant
 EQUIPMENT PLANNING
 Equipment Planning
 1833 General George Patton Drive
 Franklin, Tennessee 37067
 Phone: (615) 376-3114
 Fax: (615) 376-3114

Consultant
 CONSTRUCTION MANAGER
 7 Johnson Walkway
 Philadelphia, PA 19103
 Phone: (401) 456-5505
 Fax: (401) 456-5516

Consultant
 Inman Foodservice, LLC
 1808 West End Ave Suite 1400
 Philadelphia, PA 19103
 Phone: (610) 321-5591
 Fax: (610) 321-5889

Is the responsibility of the Construction Manager/General Contractor and all other trades and subcontractors. It is the responsibility of the Construction Manager/General Contractor and all other trades and subcontractors to verify the accuracy of the information and accept conditions of prior work by others before proceeding with any work.

Date: 11/10/06 Final-Issued for Construction
 Drawn By: MF
 Scale: 1/8" = 1'-0"

Francis

Caufman

Foley

Hoffmann

Francis, Cauffman
 Foley Hoffmann
 Architects Ltd.
 2129 Arch Street
 Philadelphia, PA 19103
 215-568-8250

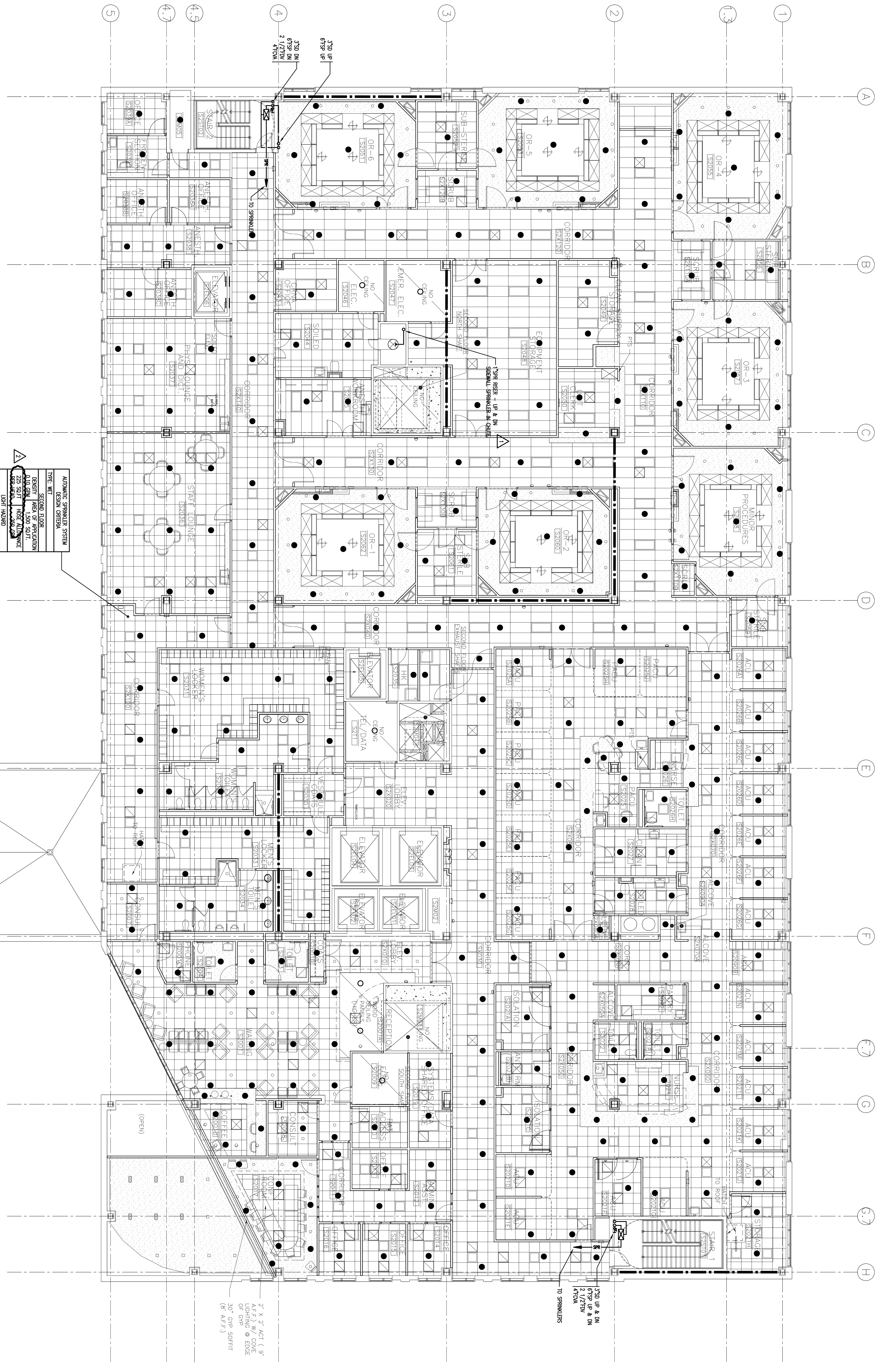
Project Title
 Mercy Health Care
 System of Maine
 FORE RIVER SHORT
 STAY HOSPITAL



Project Number
 F05-4898

Drawing Title and Number
 FIRE PROTECTION
 LEVEL 2 FLOOR PLAN

FP1.02



1 SECOND FLOOR PLAN
 1/8" = 1'-0"