

Consultant
Civil ENGINEER
Delaney-Hoffman Associates, Inc.
226 Main Street, Suite 816
Portland, ME 04101
Phone: (207) 775-1121
Fax: (207) 879-0888

Consultant
ASSOCIATE ARCHITECT/STRUCTURAL ENGINEER
SHEFFER & SHEFFER P.C. Box 818
Portland, Maine 04104
Phone: (207) 772-3846
Fax: (207) 772-1070

Consultant
MECHANICAL/ELECTRICAL ENGINEER
Burd, Ross + Arbous Consulting Engineers, LLC
175 State Street, Suite 200
311 Arsenal Street, Suite 200
Portland, ME 04102
Phone: (207) 724-6017
Fax: (207) 724-6012

Consultant
EQUIPMENT PLANNING
EQUIPMENT PLANNING, INC.
1833 General George Patton Blvd
Franklin, Tennessee 37067
Phone: (615) 252-2200
Fax: (615) 278-3114

Consultant
CONSTRUCTION MANAGER
CONSTRUCTION MANAGER
7 Johnson Way
Portland, ME 04103
Phone: (401) 456-8606
Fax: (401) 456-5516

Consultant
MEP
Imgen Federations, LLC
1808 West End Ave. Suite 1400
Portland, ME 04103
Phone: (615) 321-5591
Fax: (615) 321-5889

Note:
It is the responsibility of the Construction Manager/General Contractor and all subcontractors to verify the accuracy and accept conditions of prior work by retained trades before proceeding with any work.

Date
11/10/06 Final-issued for Construction

Drawn By
NJP

Scale
1/8" = 1'-0"

Francis

Caufman

Foley

Hoffmann

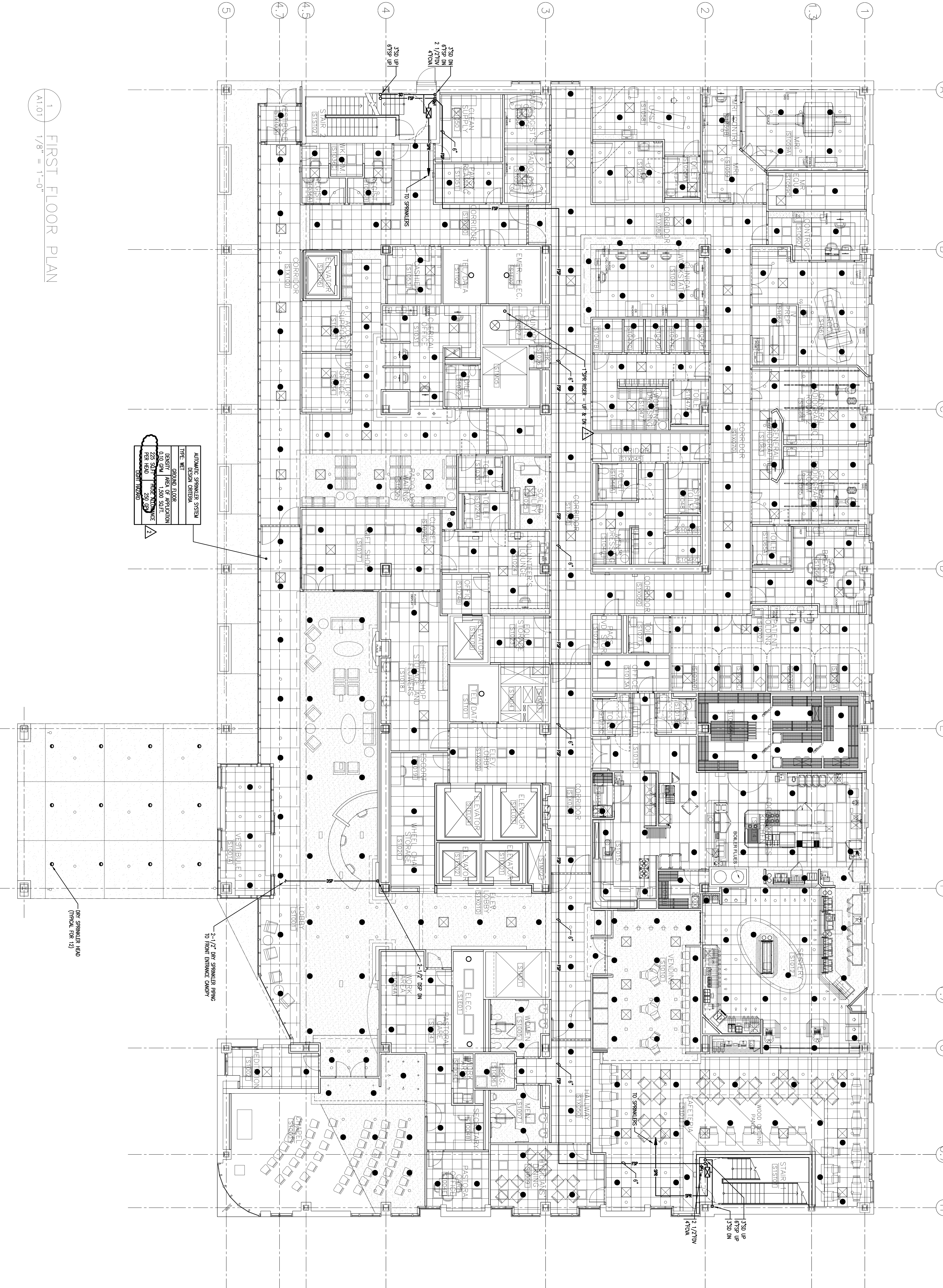
Project Title
Mercy Health Care
System of Maine
FORE RIVER SHORT
STAY HOSPITAL



Project Number
F05-4898

Drawing Title and Number
FIRE PROTECTION PLAN
LEVEL 1 FLOOR PLAN

FP1.01



AUTOMATIC SPRINKLER SYSTEM
DESIGN CRITERIA
TYPE: WET
RISER: GRAVITY FLOOR
SYSTEM: WET
RATED: 150 PSI
LISTED: 0.10 GPM @ 1.40 FT
225-3474
PER 94.0
229-027
LISTED: 174280

1 FIRST FLOOR PLAN
A1.01 1/8" = 1'-0"