

Consultant
 CH2M HILL
 2000 North 17th Street, Suite 1000
 Philadelphia, PA 19103
 Phone: (215) 382-1121
 Fax: (215) 382-1121

Consultant
 ASSOCIATE ARCHITECT/STRUCTURAL ENGINEER
 SHoP Architects
 1000 Walnut Street, Suite 200
 Philadelphia, PA 19106
 Phone: (215) 763-1121
 Fax: (215) 763-1121

Consultant
 MECHANICAL/ELECTRICAL ENGINEER
 BORD, BOG & AUBURN CONSULTING ENGINEERS, LLC
 311 Arsenal Street
 Philadelphia, PA 19106
 Phone: (215) 763-1121
 Fax: (215) 763-1121

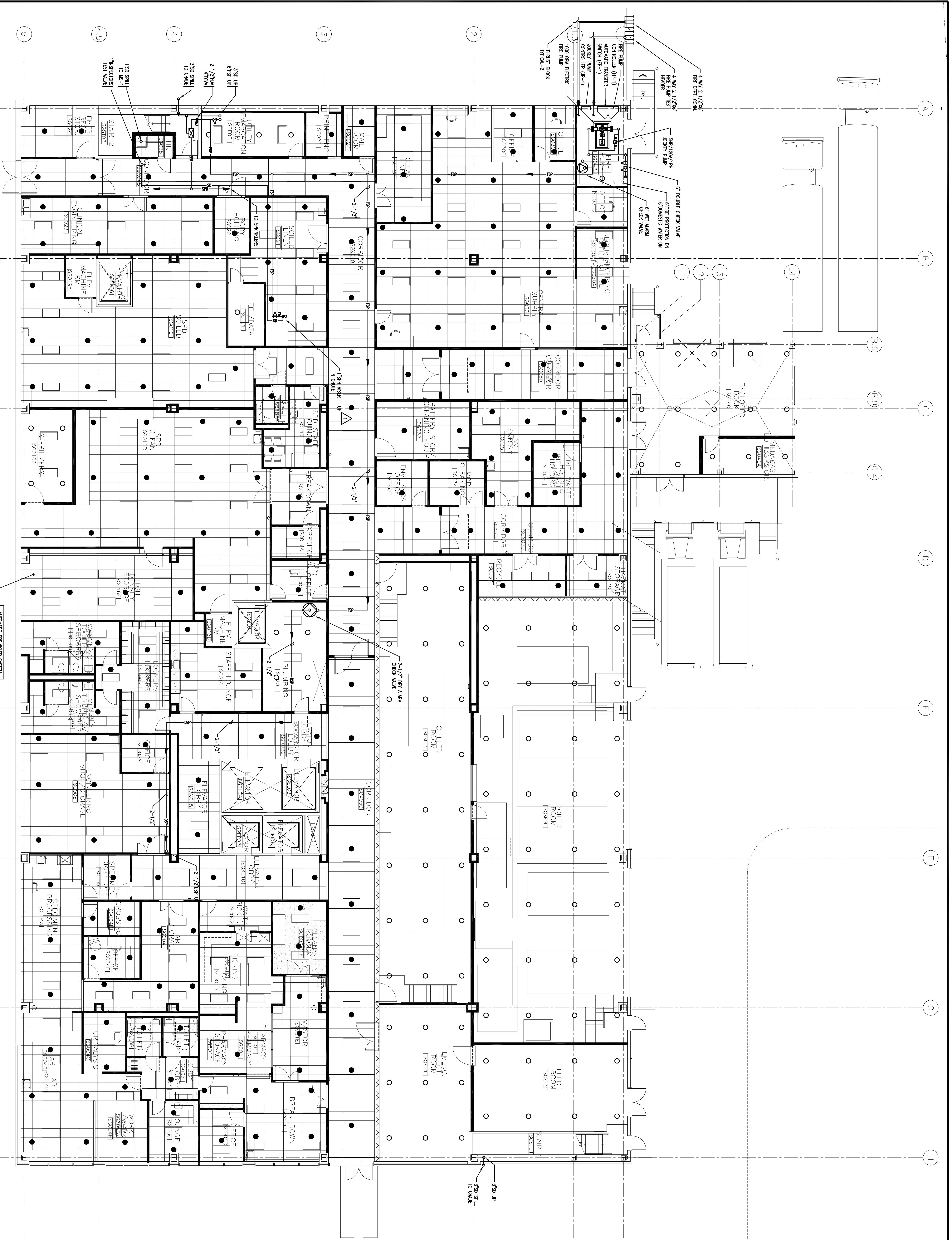
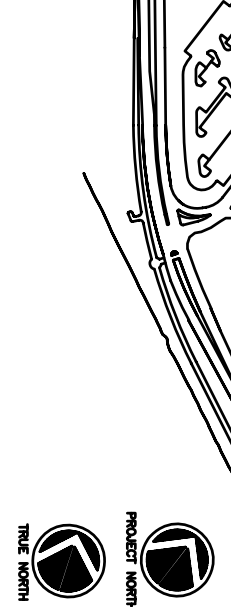
Consultant
 EQUIPMENT PLANNING
 JACOBS
 1803 General George Patton Drive
 Fort Worth, TX 76102
 Phone: (817) 339-3114
 Fax: (817) 339-3114

Consultant
 CONSTRUCTION MANAGER
 HOK
 700 North Broad Street
 Philadelphia, PA 19106
 Phone: (215) 466-5516
 Fax: (215) 466-5516

Consultant
 INTERIOR DESIGNER
 HOFFMANN
 1808 West End Ave, Suite 1400
 Philadelphia, PA 19103
 Phone: (215) 321-5591
 Fax: (215) 321-5591

Consultant
 ARCHITECT
 FRANCIS
 3129 Arch Street
 Philadelphia, PA 19103
 Phone: (215) 568-4320
 Fax: (215) 568-4320

Project Title
 Mercy Health Care
 System of Maine
 FORE RIVER SHORT
 STAY HOSPITAL



1 GROUND FLOOR PLAN
 1/8" = 1'-0"

