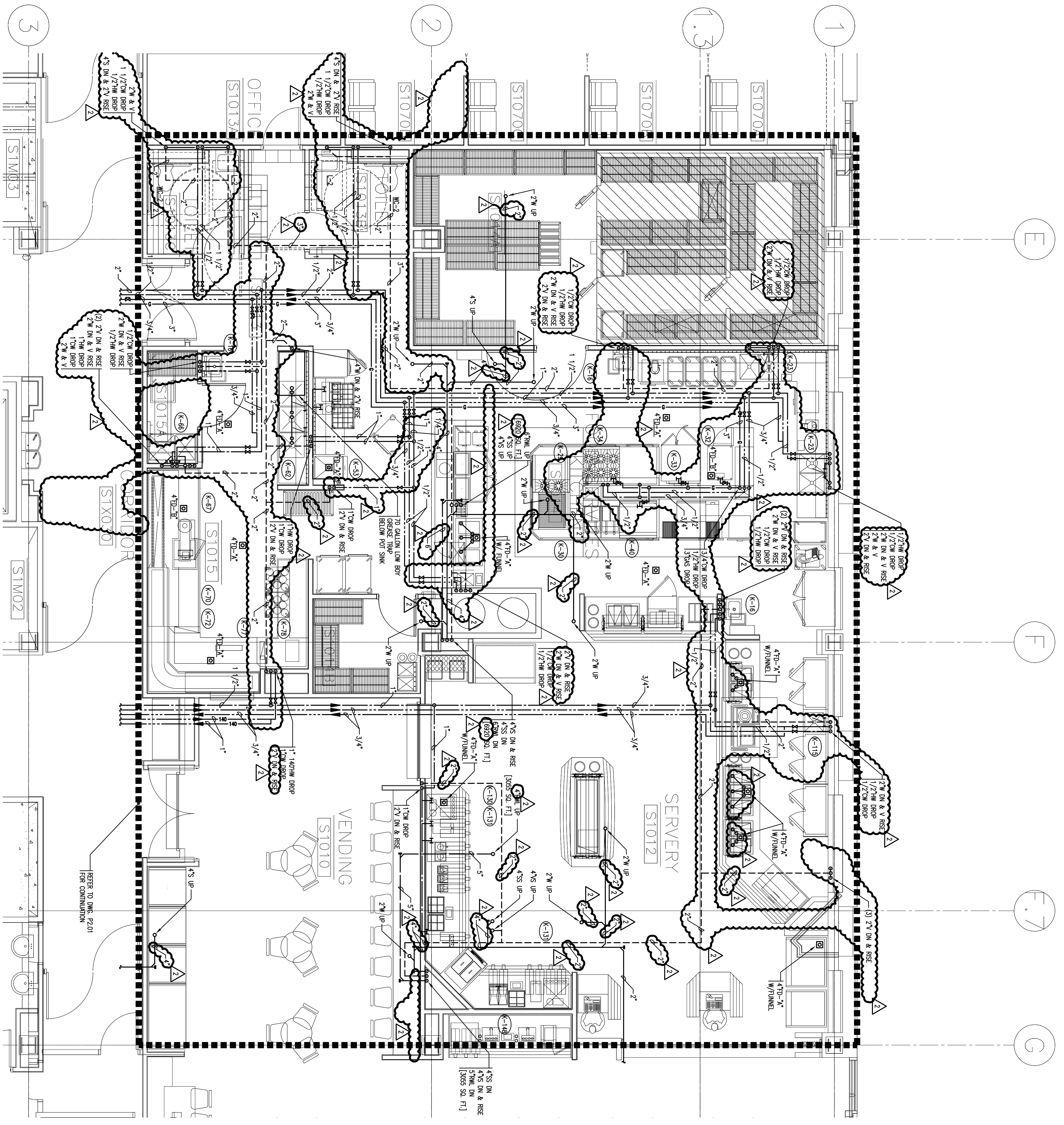
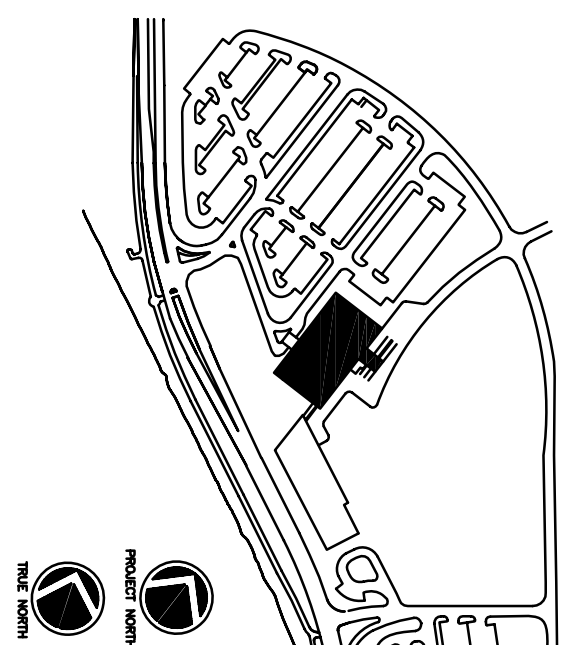


SYMBOL	FITTURE	CONNECTIONS				GAS	REMARKS
		W	V	CW	HW		
(K-18)	HAND SINK	2"	1/2"	1/2"	1/2"	-	
(K-23)	DISPENSER WITH CONTROL	3"	-	3/4"	-	-	
(K-29)	TURBO CHEF OVEN	-	-	-	-	-	
(K-30)	GRIDDLE W/ CONNECTION OVEN	-	-	-	-	130	3/4"
(K-32)	DOUBLE STEWARM	-	-	1/2"	-	144	1/2"
(K-33)	DOUBLE CONNECTION OVEN	-	-	-	-	120	1"
(K-34)	12 GAL KETTLE	-	-	1/2"	1/2"	53	3/4"
(K-39)	OHM BROILER	-	-	-	-	108	3/4"
(K-40)	FRIGS/TURBO/IMP ASSEMBLY	-	-	-	-	-	
(K-53)	CHIEF ICE MAKER	-	2"	1"	-	-	
(K-52)	3-COMPARTMENT SINK	-	2"	1"	1"	-	
(K-51)	SOLED DSH TABLE	-	-	-	-	-	
(K-66)	CAN WASH/IMP SINK	3"	-	1/2"	1/2"	-	
(K-72)	DISPENSER W/ CONTROL	3"	-	1/2"	1/2"	-	
(K-70)	COILING MOUNTED HOSE REEL	-	-	-	-	-	
(K-78)	DISH WASHING MACHINE	-	3"	1"	1" @ 1/4"	-	
(K-78)	BOOSTER HEATER	-	-	-	3/4 @ 1/4"	-	
(K-119)	BACK COUNTER W/ SINK	2"	2"	1/2"	1/2"	-	
(K-13)	AMBIENT CARBONATOR	-	-	1/2"	-	-	
(K-13)	CHIEF ICE MAKER	-	-	1/2"	-	-	
(K-18)	ICE/WATER DISPENSER	-	-	1/2"	-	-	

KITCHEN EQUIPMENT CONNECTION SCHEDULE



1 FIRST FLOOR - KITCHEN/FOOD SERVICES PART PLAN  
 PFP-3 1/4" = 1'-0"



Consultant  
 Civil Engineer  
 DeLuce-Hoffman Associates, Inc.  
 726 Main Street, Suite 8  
 Philadelphia, PA 19103  
 Phone (207) 775-1121  
 Fax (207) 879-0888

Consultant  
 ASSOCIATE ARCHITECT/STRUCTURAL ENGINEER  
 SMRT  
 One State St., Box 618  
 Portland, ME 04101  
 Phone (207) 772-3846  
 Fax (207) 772-1070

Consultant  
 MECHANICAL/ELECTRICAL ENGINEER  
 BIRD, BOO + ANDRUS Consulting Engineers, LLC  
 311 Arsenal Street  
 Worcester, MA 01601  
 Phone (508) 853-8800  
 Fax (508) 853-8800

Consultant  
 EQUIPMENT PLANNING  
 183 General George Patton Drive  
 Franklin, Tennessee 37067  
 Phone (615) 321-5589  
 Fax (615) 321-5589

Consultant  
 CONSTRUCTION MANAGER  
 7 Johnson Walkway  
 Providence, RI 02903  
 Phone (401) 456-8900  
 Fax (401) 456-5516

Consultant  
 Interior Designer  
 DeLuce-Hoffman Associates, LLC  
 1808 West End Ave. Suite 1400  
 Philadelphia, PA 19103  
 Phone (615) 321-5591  
 Fax (615) 321-5589

Date  
 11/10/06 Final-Issued for Construction  
 Drawn By  
 M.F.

Scale  
 1/4" = 1'-0"

Francis

Caufman

Foley

Hoffmann

Project Title  
 Mercy Health Core  
 System of Maine  
 FORE RIVER SHORT  
 STAY HOSPITAL



Project Number  
 F05-4898

Drawing Title Number  
 PLUMBING  
 PART PLAN  
 KITCHEN

P3.01