

Consultant
Civil/Structural
DeLeon-Hoffman Associates, Inc.
2708 Main Street, Suite 806
Portland, ME 04106
Phone: (207) 775-1211
Fax: (207) 879-0888

Consultant
ASSOCIATE ARCHITECT/STRUCTURAL ENGINEER
Sherrill Lee Moore & Co.
Portland, ME 04104
Phone: (207) 772-3846
Fax: (207) 772-1070

Consultant
MECHANICAL/ELECTRICAL ENGINEER
Bord, Ross + Aboussouan Consulting Engineers, LLC
311 Arsenal Street
Portland, ME 04102
Phone: (207) 724-6011
Fax: 617-824-9339

Consultant
EQUIPMENT PLANNING
1803 General George Patton Drive
Franklin, Tennessee 37067
Phone: (615) 376-3114
Fax: (615) 376-3114

Consultant
CONSTRUCTION MANAGER
7 Johnson Wharfway
Portland, ME 04101
Phone: (401) 456-8696
Fax: (401) 456-5516

Consultant
Horn Construction, LLC
1808 West End Ave. Suite 1400
Portland, ME 04102
Phone: (615) 321-5591
Fax: (615) 321-5589

Consultant
Francis
11/10/06 Find-Issued for Construction

Date
11/10/06 Find-Issued for Construction

Drawn By
NJP

Scale
1/8" = 1'-0"

Project Title
Mercy Health Core System of Maine Fore River Short Stay Hospital

Project Number
F05-4898

Drawing Title and Number
PLUMBING LEVEL 2 FLOOR PLAN SUPPLY

Project Location
2120 Ash Street
Philadelphia, PA 19103
Phone: 215-568-8250

Project Title
Mercy Health Core System of Maine Fore River Short Stay Hospital

Project Number
F05-4898

Drawing Title and Number
PLUMBING LEVEL 2 FLOOR PLAN SUPPLY

Project Location
2120 Ash Street
Philadelphia, PA 19103
Phone: 215-568-8250

Project Title
Mercy Health Core System of Maine Fore River Short Stay Hospital

Project Number
F05-4898

Drawing Title and Number
PLUMBING LEVEL 2 FLOOR PLAN SUPPLY

Project Location
2120 Ash Street
Philadelphia, PA 19103
Phone: 215-568-8250

Project Title
Mercy Health Core System of Maine Fore River Short Stay Hospital

Project Number
F05-4898

Drawing Title and Number
PLUMBING LEVEL 2 FLOOR PLAN SUPPLY

Project Location
2120 Ash Street
Philadelphia, PA 19103
Phone: 215-568-8250

Project Title
Mercy Health Core System of Maine Fore River Short Stay Hospital

Project Number
F05-4898

Drawing Title and Number
PLUMBING LEVEL 2 FLOOR PLAN SUPPLY

Project Location
2120 Ash Street
Philadelphia, PA 19103
Phone: 215-568-8250

Project Title
Mercy Health Core System of Maine Fore River Short Stay Hospital

Project Number
F05-4898

Drawing Title and Number
PLUMBING LEVEL 2 FLOOR PLAN SUPPLY

Project Location
2120 Ash Street
Philadelphia, PA 19103
Phone: 215-568-8250

Project Title
Mercy Health Core System of Maine Fore River Short Stay Hospital

Project Number
F05-4898

Drawing Title and Number
PLUMBING LEVEL 2 FLOOR PLAN SUPPLY

Project Location
2120 Ash Street
Philadelphia, PA 19103
Phone: 215-568-8250

Project Title
Mercy Health Core System of Maine Fore River Short Stay Hospital

Project Number
F05-4898

Drawing Title and Number
PLUMBING LEVEL 2 FLOOR PLAN SUPPLY

Project Location
2120 Ash Street
Philadelphia, PA 19103
Phone: 215-568-8250

Project Title
Mercy Health Core System of Maine Fore River Short Stay Hospital

Project Number
F05-4898

Drawing Title and Number
PLUMBING LEVEL 2 FLOOR PLAN SUPPLY

Project Location
2120 Ash Street
Philadelphia, PA 19103
Phone: 215-568-8250

Project Title
Mercy Health Core System of Maine Fore River Short Stay Hospital

Project Number
F05-4898

Drawing Title and Number
PLUMBING LEVEL 2 FLOOR PLAN SUPPLY

Project Location
2120 Ash Street
Philadelphia, PA 19103
Phone: 215-568-8250

Project Title
Mercy Health Core System of Maine Fore River Short Stay Hospital

Project Number
F05-4898

Drawing Title and Number
PLUMBING LEVEL 2 FLOOR PLAN SUPPLY

Project Location
2120 Ash Street
Philadelphia, PA 19103
Phone: 215-568-8250

Project Title
Mercy Health Core System of Maine Fore River Short Stay Hospital

Project Number
F05-4898

Drawing Title and Number
PLUMBING LEVEL 2 FLOOR PLAN SUPPLY

Project Location
2120 Ash Street
Philadelphia, PA 19103
Phone: 215-568-8250

Project Title
Mercy Health Core System of Maine Fore River Short Stay Hospital

Project Number
F05-4898

Drawing Title and Number
PLUMBING LEVEL 2 FLOOR PLAN SUPPLY

Project Location
2120 Ash Street
Philadelphia, PA 19103
Phone: 215-568-8250

Project Title
Mercy Health Core System of Maine Fore River Short Stay Hospital

Project Number
F05-4898

Drawing Title and Number
PLUMBING LEVEL 2 FLOOR PLAN SUPPLY

Project Location
2120 Ash Street
Philadelphia, PA 19103
Phone: 215-568-8250

Project Title
Mercy Health Core System of Maine Fore River Short Stay Hospital

Project Number
F05-4898

Drawing Title and Number
PLUMBING LEVEL 2 FLOOR PLAN SUPPLY

Project Location
2120 Ash Street
Philadelphia, PA 19103
Phone: 215-568-8250

Project Title
Mercy Health Core System of Maine Fore River Short Stay Hospital

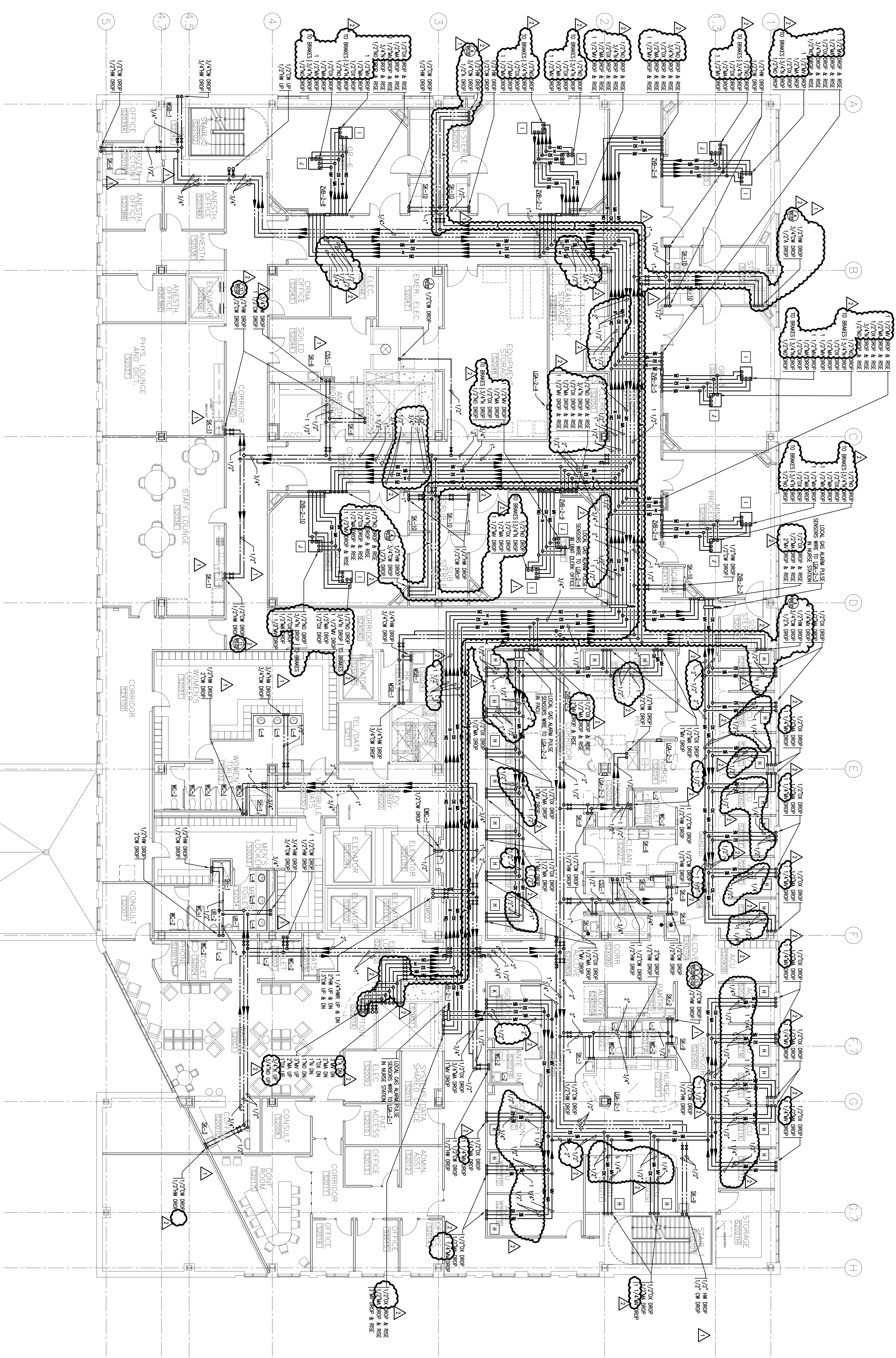
Project Number
F05-4898

Drawing Title and Number
PLUMBING LEVEL 2 FLOOR PLAN SUPPLY

Project Location
2120 Ash Street
Philadelphia, PA 19103
Phone: 215-568-8250

Project Title
Mercy Health Core System of Maine Fore River Short Stay Hospital

Project Number
F05-4898



1 SECOND FLOOR PLAN
A1.03 1/8" = 1'-0"