

Consultant
Civil Engineer
Dolan-Hoffman Associates, Inc.
728 Main Street, Suite 806
Portland, ME 04101
Phone: (207) 775-1121
Fax: (207) 879-0888

Consultant
ASSOCIATE ARCHITECT/STRUCTURAL ENGINEER
SMART
One State St., Box 618
Portland, ME 04101
Phone: (207) 772-3846
Fax: (207) 772-1070

Consultant
MECHANICAL/ELECTRICAL ENGINEER
Bord, Ross + Aronson Consulting Engineers, LLC
1800 Main Street, Suite 806
Portland, ME 04101
Phone: (207) 775-1121
Fax: (207) 879-0888

Consultant
EQUIPMENT PLANNING
1883 General George Patton Drive
Franklin, Tennessee 37067
Phone: (615) 276-3114
Fax: (615) 276-3114

Consultant
CONSTRUCTION MANAGER
7 Johnson Wharfway
Portland, ME 04101
Phone: (407) 456-8900
Fax: (407) 456-5516

Consultant
Hoffmann
1808 West End Ave. Suite 1400
Nashville, Tennessee 37203
Phone: (615) 321-5591
Fax: (615) 321-5889

It is the responsibility of the Construction Manager/General Contractor and all other parties to verify the accuracy of the information and accept conditions of prior work by retained trades before proceeding with any work.

Date: 11/10/06
Drawn By: NTP
Scale: 1/8" = 1'-0"

11/10/06 Final-Issued for Construction

Francis

Coffman

Foley

Hoffmann

Project Title
Mercy Health Core
System of Maine
FORE RIVER SHORT
STAY HOSPITAL

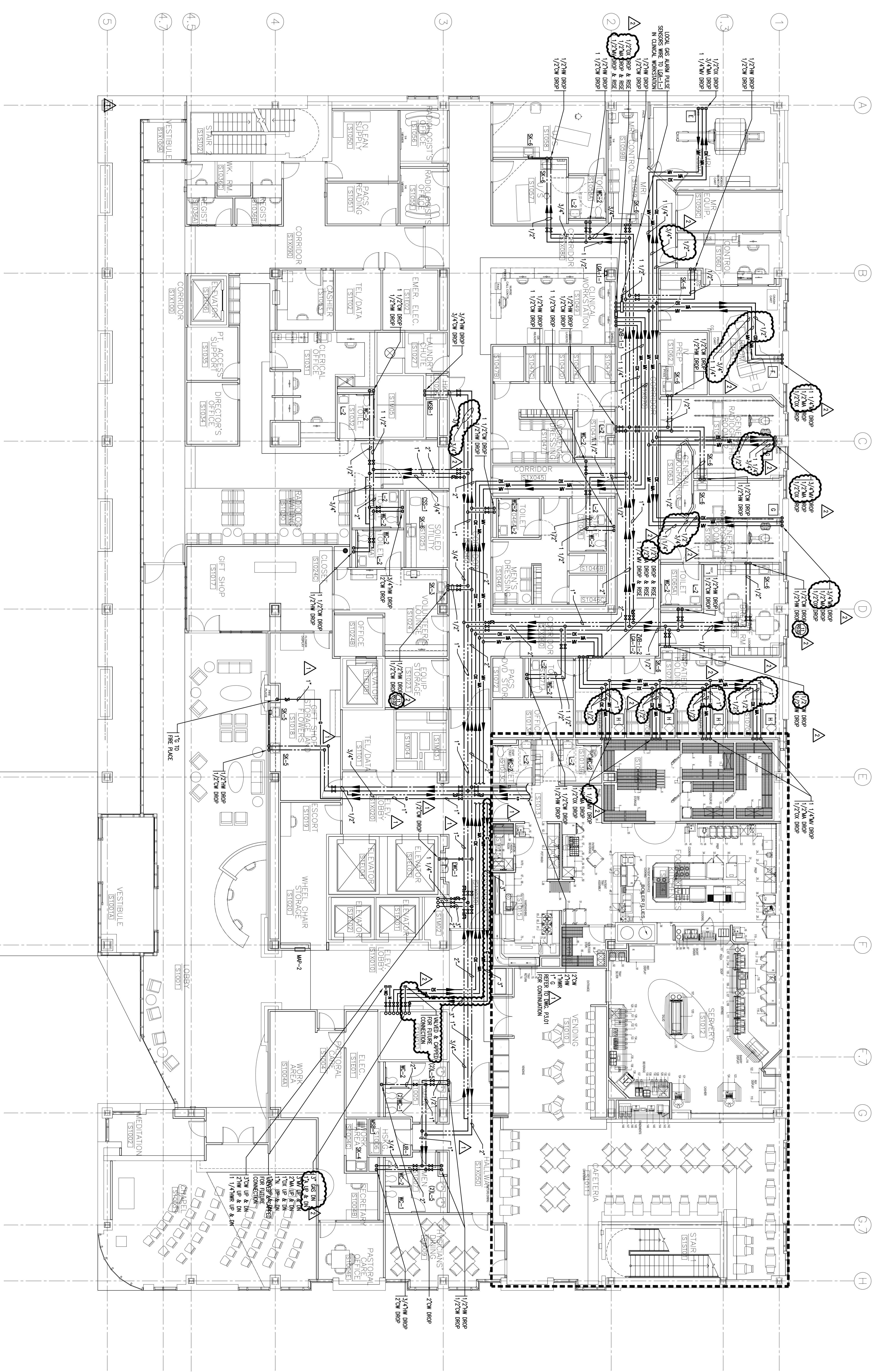
Project Title
Mercy Health Core
System of Maine
FORE RIVER SHORT
STAY HOSPITAL



Project Number
F05-4898

Drawing Title and Number
PLUMBING
LEVEL 1 FLOOR PLAN
SUPPLY

P2.01



1 FIRST FLOOR PLAN
A1.01 1/8" = 1'-0"