

Consultant  
Olin-Hoffmann Associates, Inc.  
275 Main Street, Suite 8  
Portland, ME 04106  
Phone: (207) 775-1121  
Fax: (207) 879-0898

Consultant  
ASSOCIATE ARCHITECT/STRUCTURAL ENGINEER  
Shurtzoff & Associates, Inc.  
One State St., Box 618  
Portland, ME 04104  
Phone: (207) 772-3846  
Fax: (207) 772-1070

Consultant  
MECHANICAL/ELECTRICAL ENGINEER  
Burd, Soth + Aronson Consulting Engineers, LLC  
311 Arsenal Street  
Portland, ME 04102  
Phone: (207) 754-0015  
Fax: 617/924/3239

Consultant  
EQUIPMENT PLANNING  
M&E Associates  
183 General George Patton Drive  
Franklin, Tennessee 37067  
Phone: (615) 776-3114  
Fax: (615) 376-3114

Consultant  
CONSTRUCTION MANAGER  
7 Johnson Wharf  
Portland, ME 04101  
Phone: (603) 456-8900  
Fax: (401) 456-5516

Consultant  
Hoffmann Associates, LLC  
1808 West End Ave. Suite 1400  
Portland, ME 04102  
Phone: (615) 321-5591  
Fax: (615) 321-5589

It is the responsibility of the Commissioning Manager/General Contractor and all subcontractors to verify the accuracy and accept conditions of prior work by reviewed trades before proceeding with any work.

Date: 11/10/06  
Drawn By: NJP  
Scale: 1/8" = 1'-0"

Francis

Caulman

Foley

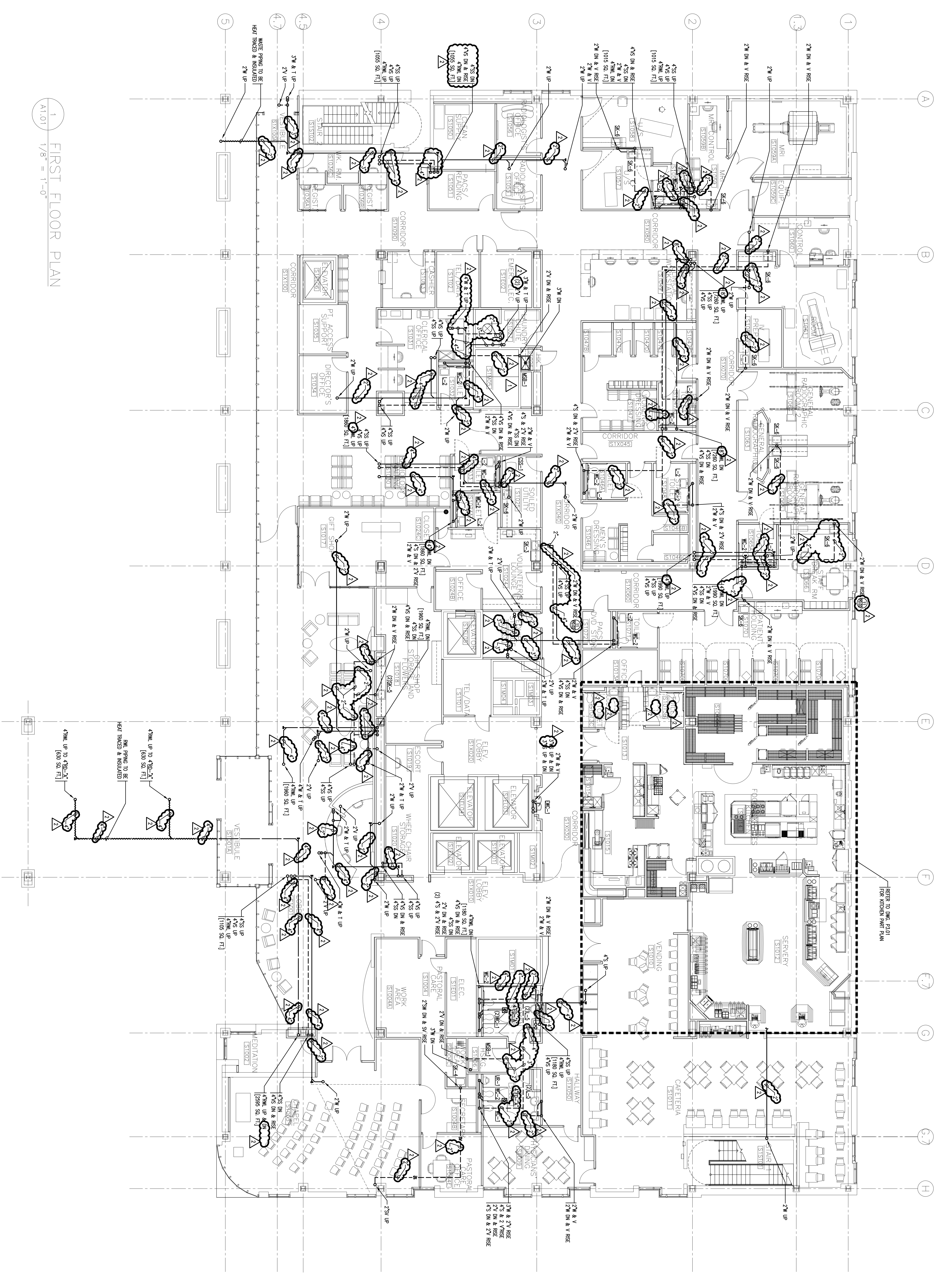
Hoffmann

Project Title  
Mercy Health Core  
System of Maine  
FORE RIVER SHORT  
STAY HOSPITAL



Project Number  
F05-4898

Drawing Title and Number  
PLUMBING  
LEVEL 1 FLOOR PLAN  
DRAINAGE  
P1.01



1 FIRST FLOOR PLAN  
A1:01 1/8" = 1'-0"