

Consultant
 CIVIL ENGINEER
 DeLone-Hoffman Associates, Inc.
 726 Main Street, Suite 8
 Philadelphia, PA 19103
 Phone: (215) 775-1121
 Fax: (215) 775-0898

Consultant
 ASSOCIATE ARCHITECT/STRUCTURAL ENGINEER
 SHRT
 One Moore 44104
 Philadelphia, PA 19104
 Phone: (215) 772-3846
 Fax: (215) 772-1070

Consultant
 MECHANICAL/ELECTRICAL ENGINEER
 Bird, Koon + Aronson Consulting Engineers, LLC
 311 Arsenal Street
 Philadelphia, PA 19106
 Phone: (215) 625-2789
 Fax: 6179249339

Consultant
 EQUIPMENT PLANNING
 Equipment Planning
 1833 General George Patton Drive
 Franklin, Tennessee 37067
 Phone: (615) 276-3114
 Fax: (615) 276-3114

Consultant
 CONSTRUCTION MANAGER
 Johnson-Walsh
 7 Johnson-Walsh Parkway
 Philadelphia, PA 19103
 Phone: (481) 456-8906
 Fax: (481) 456-5516

Consultant
 ARCHITECT
 Hoenig-Foster/Robinson, LLC
 1808 West End Ave. Suite 1400
 Philadelphia, PA 19103
 Phone: (610) 321-5591
 Fax: (610) 321-5589

Note
 11/10/06 Find-Issued for Construction
 Drawn By
 NJP
 Scale
 1/8" = 1'-0"

Francis
 Cauffman

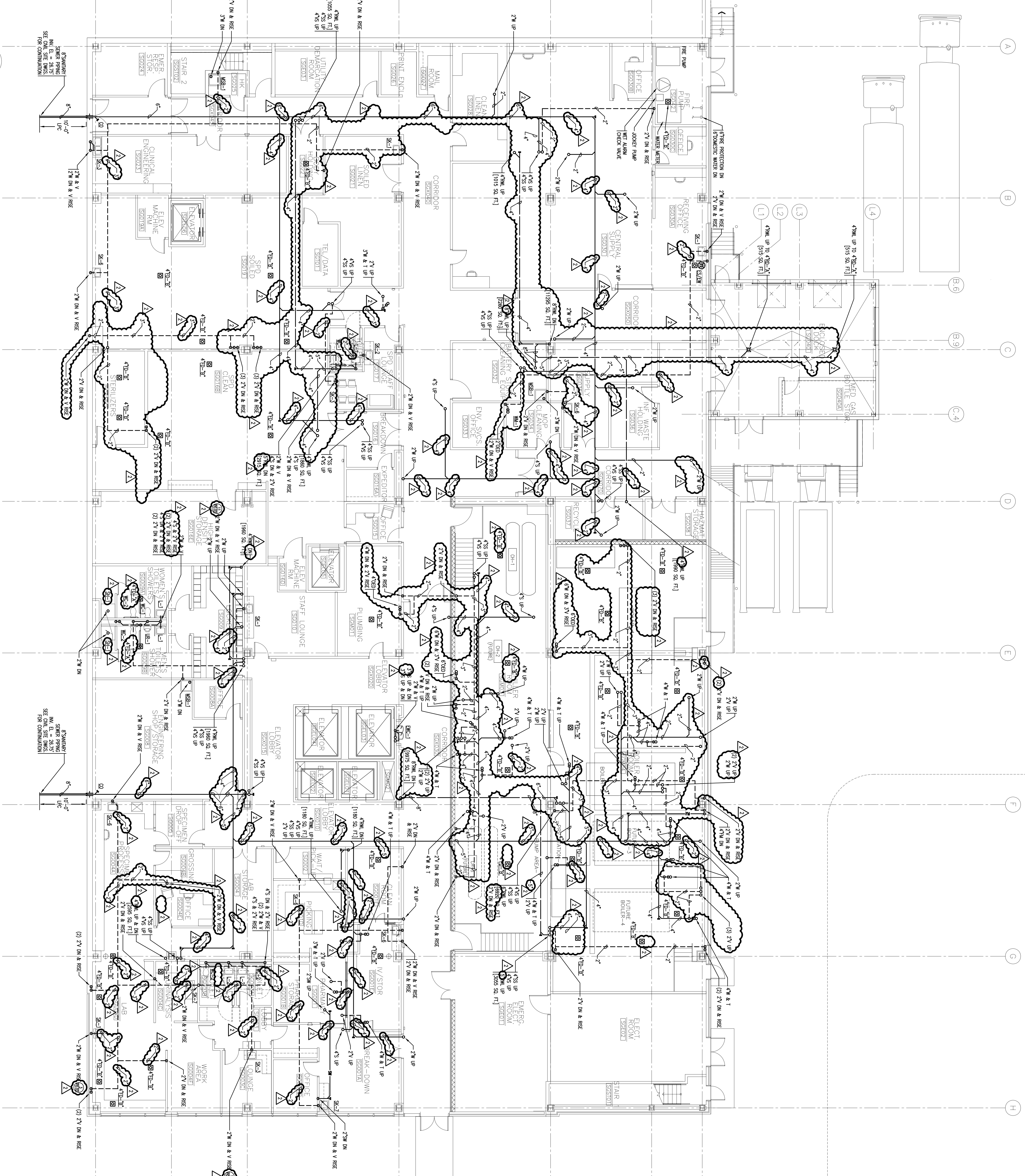
Foley
 Hoffmann

Project Title
 Mercy Health Core
 System of Moore
 FORE RIVER SHORT
 STAY HOSPITAL



Project Number
 F05-4898

Drawing Title and Number
 PLUMBING
 GROUND FLOOR PLAN
 DRAINAGE
 P1.00



1 GROUND FLOOR PLAN
 A1.00 1/8" = 1'-0"