

Consultant
 Mechanical/Electrical/Plumbing/Structural Engineers
 Daniel-Hoffman Associates, Inc.
 728 Main Street, Suite 806
 Philadelphia, PA 19103
 Phone: (207) 775-1121
 Fax: (207) 879-0989

Consultant
 ASPECT ARCHITECT/STRUCTURAL ENGINEER
 300 North Street, 9th Floor
 Philadelphia, PA 19106
 Phone: (207) 772-5846
 Fax: (207) 772-1070

Consultant
 MECHANICAL/ELECTRICAL ENGINEER
 Bond, Koo + Aronov Consulting Engineers, LLC
 311 Aerial Street
 Philadelphia, PA 19107
 Phone: (215) 261-2789
 Fax: 617-292-8339

EQUIPMENT PLANNING
 Equipment Planning
 183 General George Patton Drive
 Franklin, Tennessee 37067
 Phone: (615) 376-3114
 Fax: (615) 376-3114

Consultant
 CONSTRUCTION MANAGER
 7 Johnson Walkway
 Philadelphia, PA 19103
 Phone: (401) 466-8906
 Fax: (401) 466-5516

Consultant
 Iron Foundations, LLC
 1808 West End Ave. Suite 1400
 Philadelphia, PA 19103
 Phone: (610) 321-5591
 Fax: (610) 321-5889

NOTE: The responsibility of the Construction Manager/General Contractor and all other parties is to verify and accept conditions of prior work by retained trades before proceeding with any work.

Date: 11/10/06
 Drawn By: NLP
 Scale: NONE

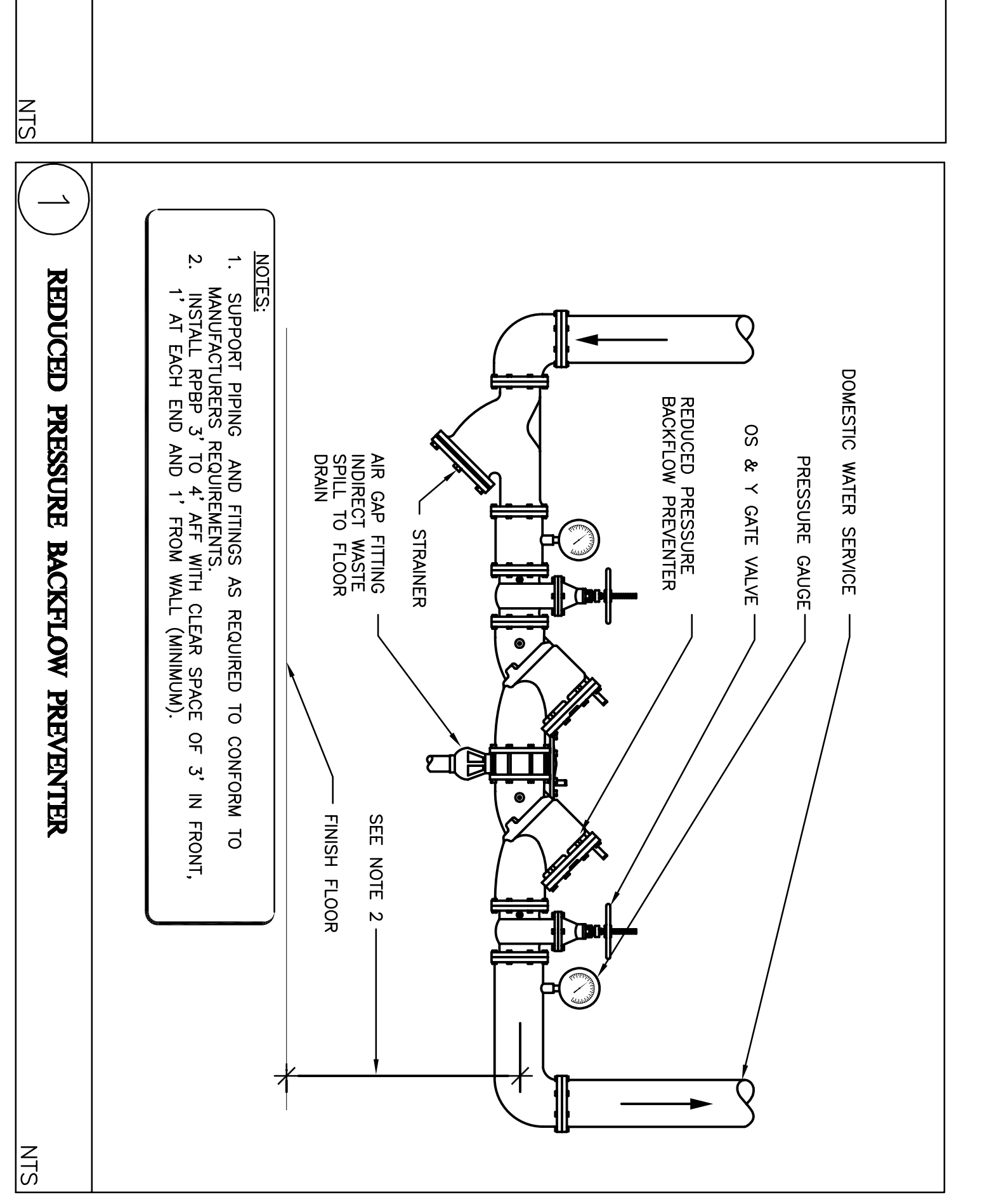
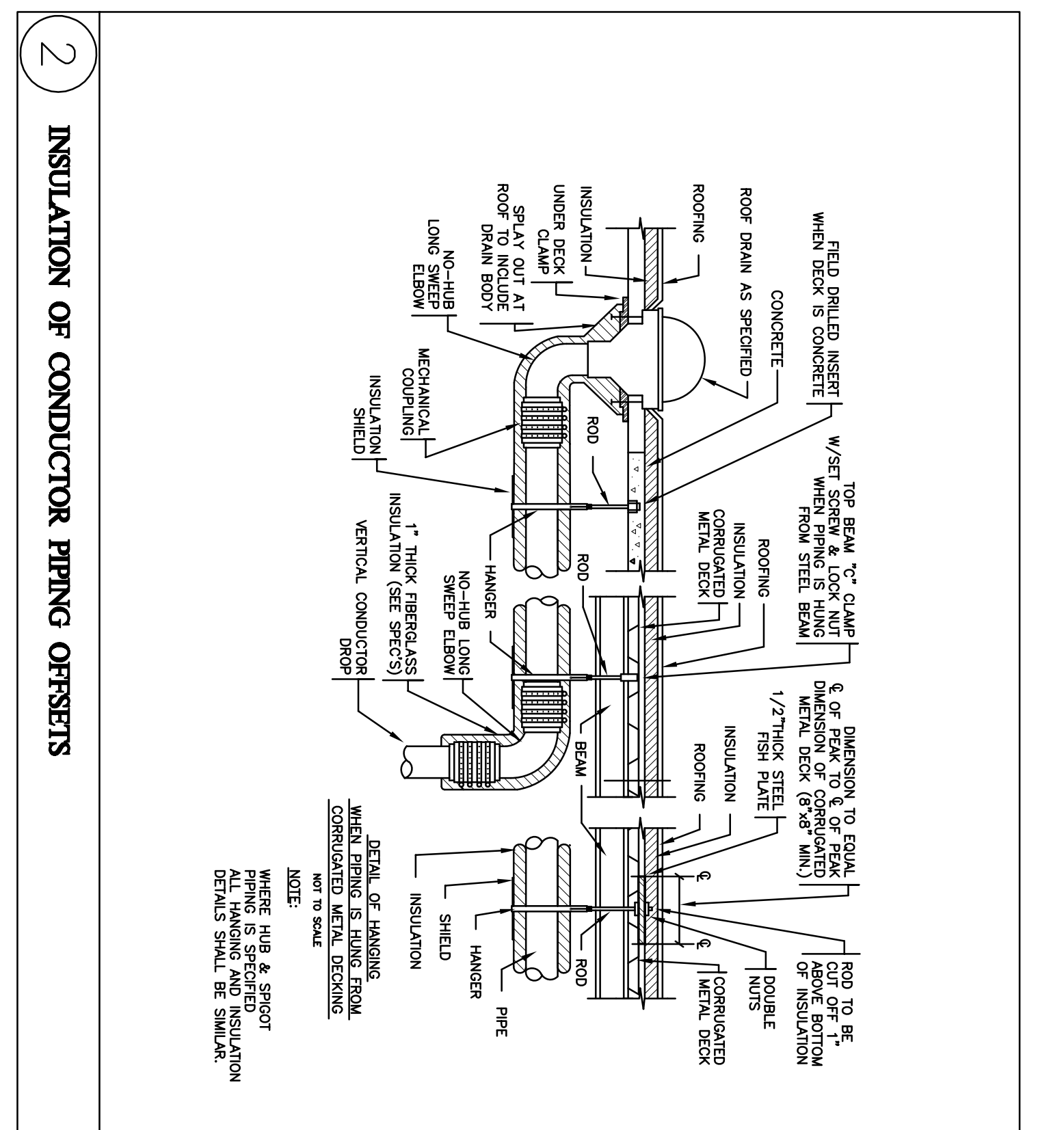
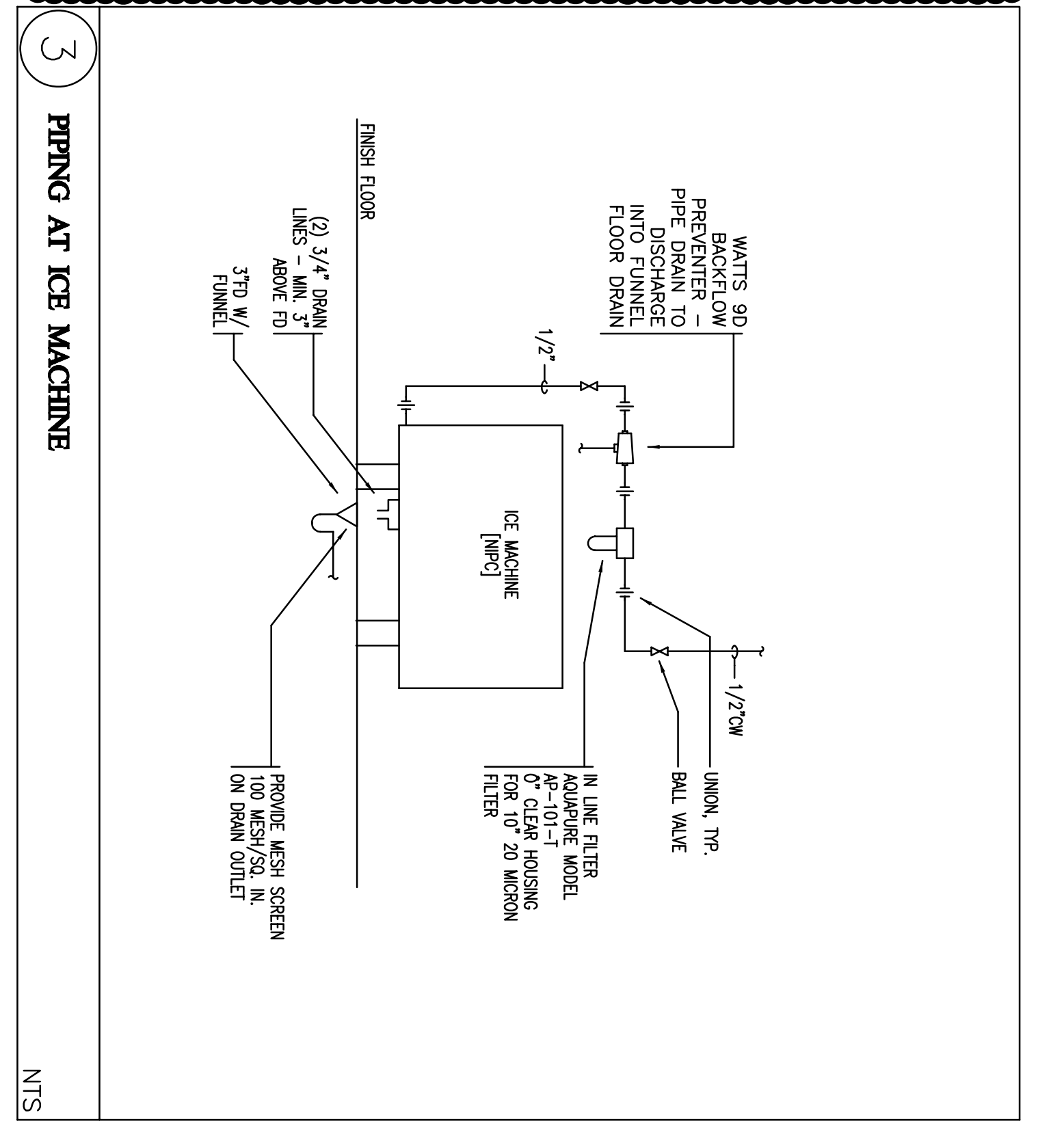
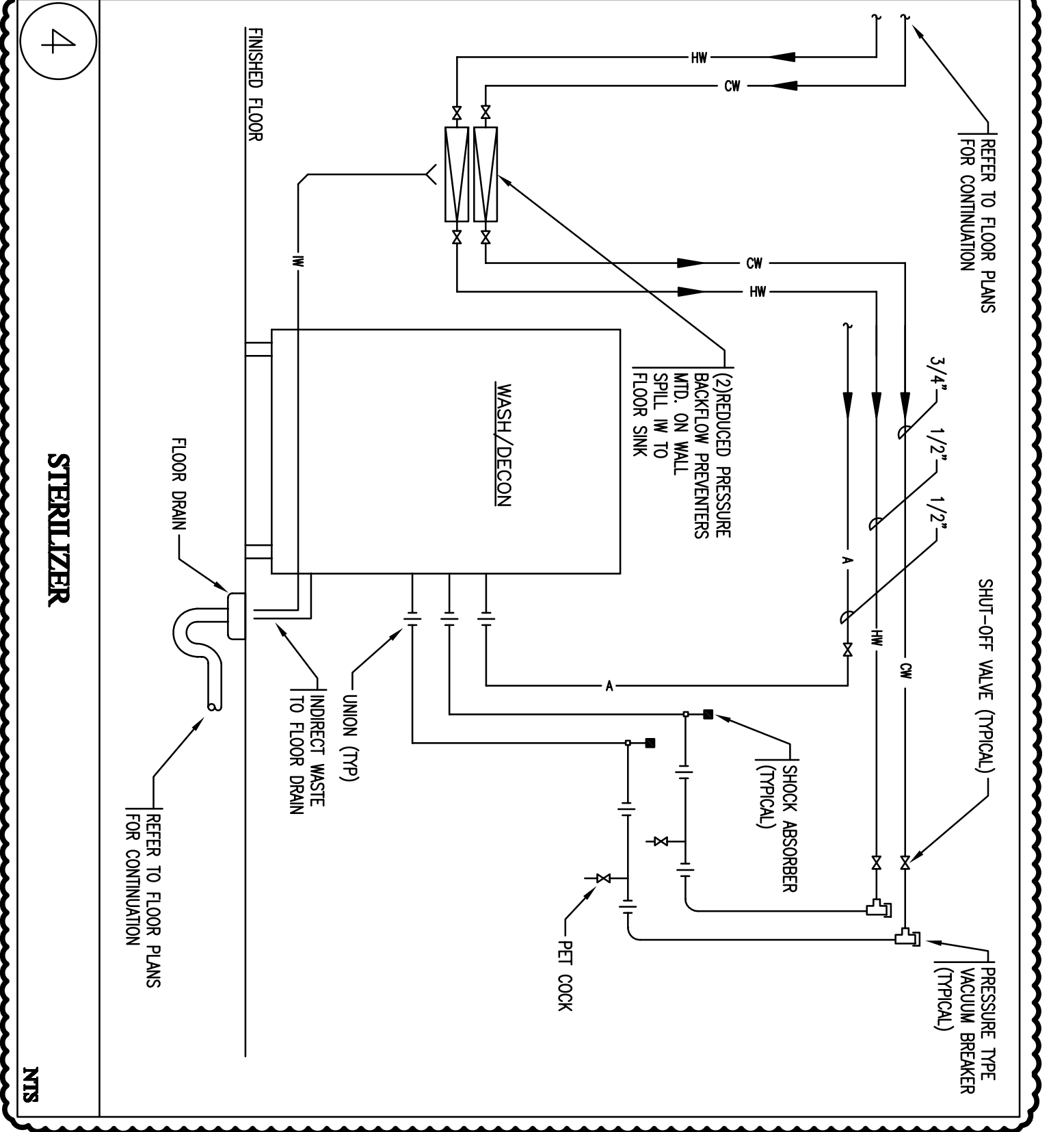
11/10/06 Final-issued for Construction

Francis
Caufman
Foley

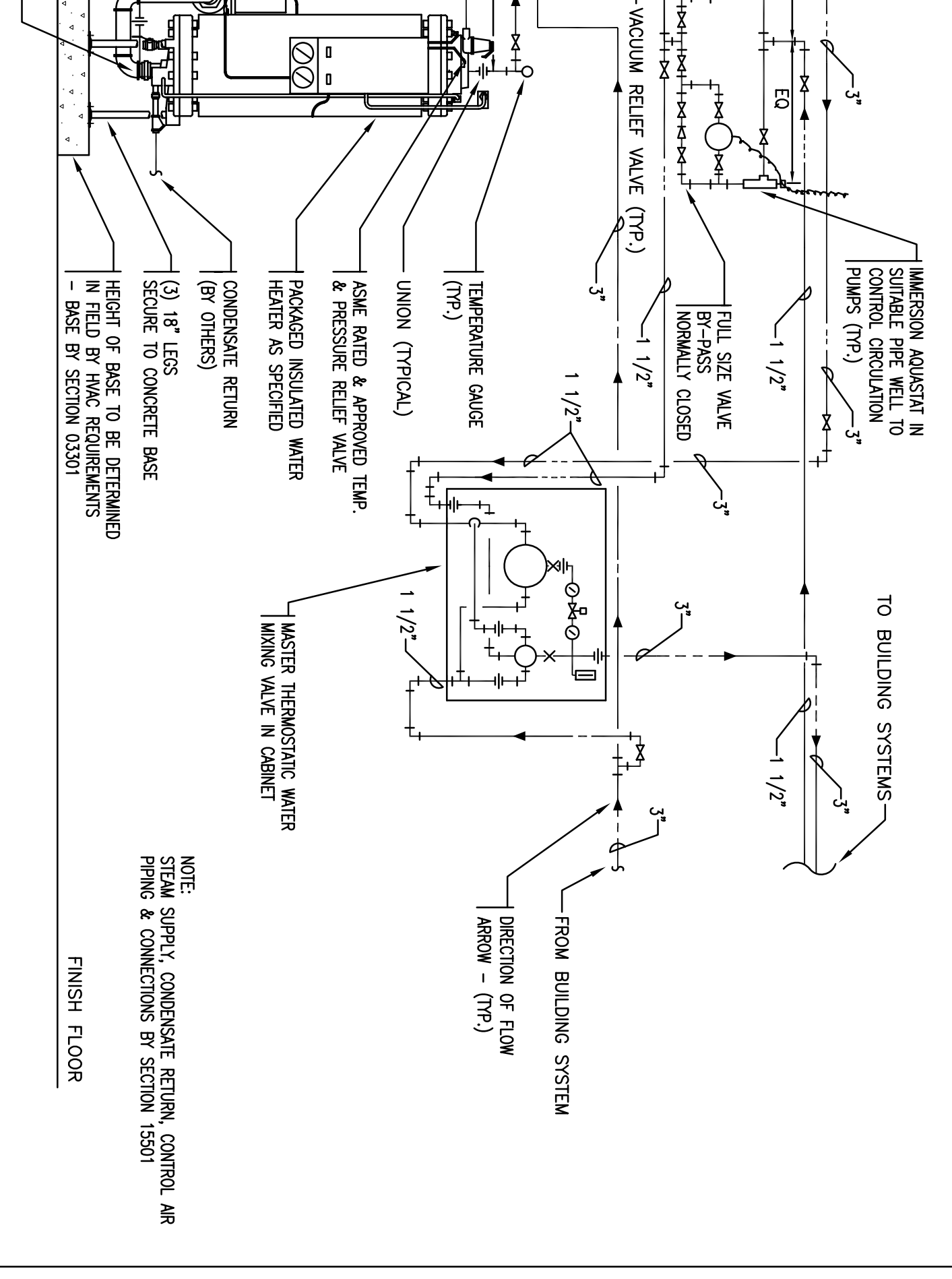
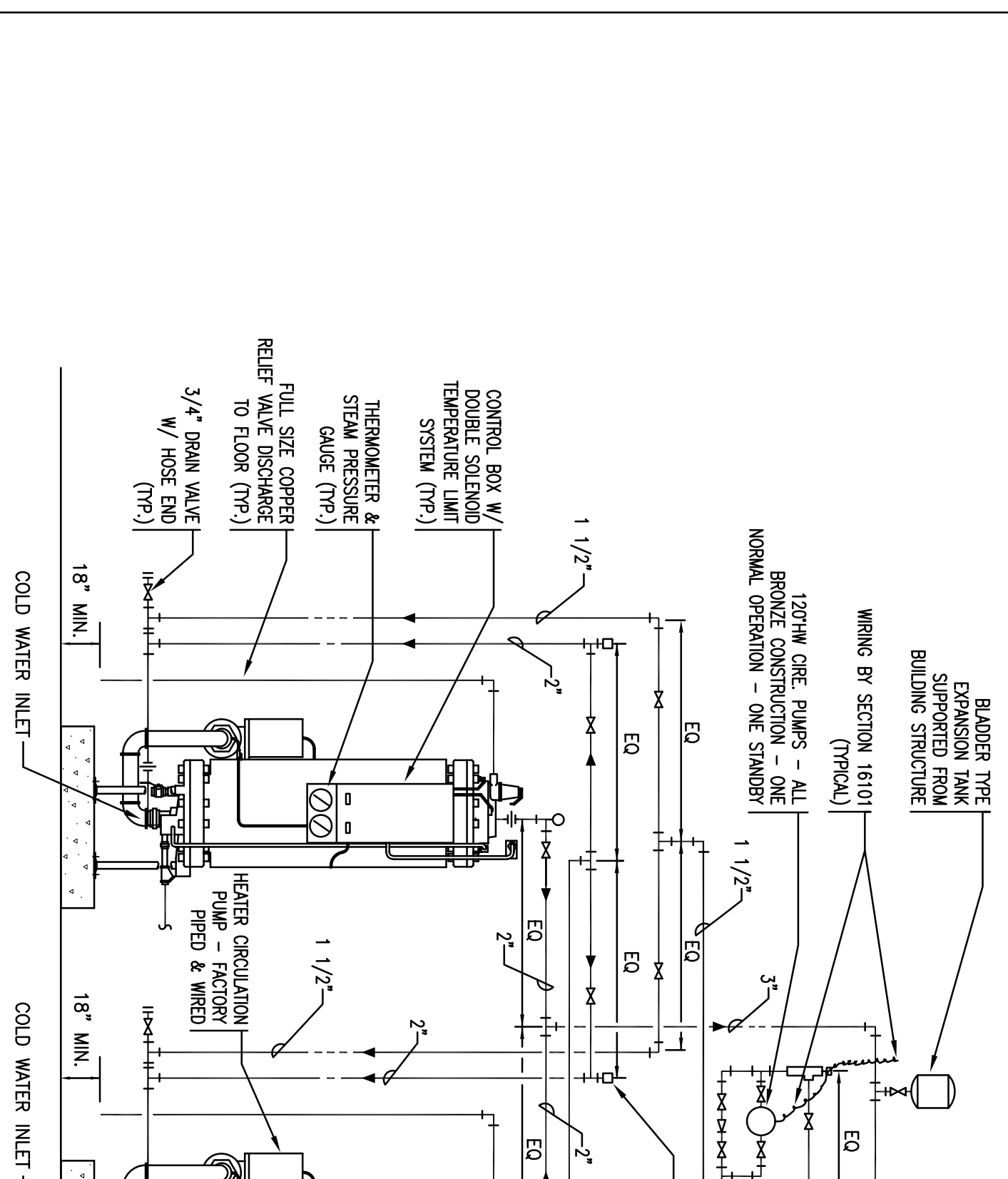
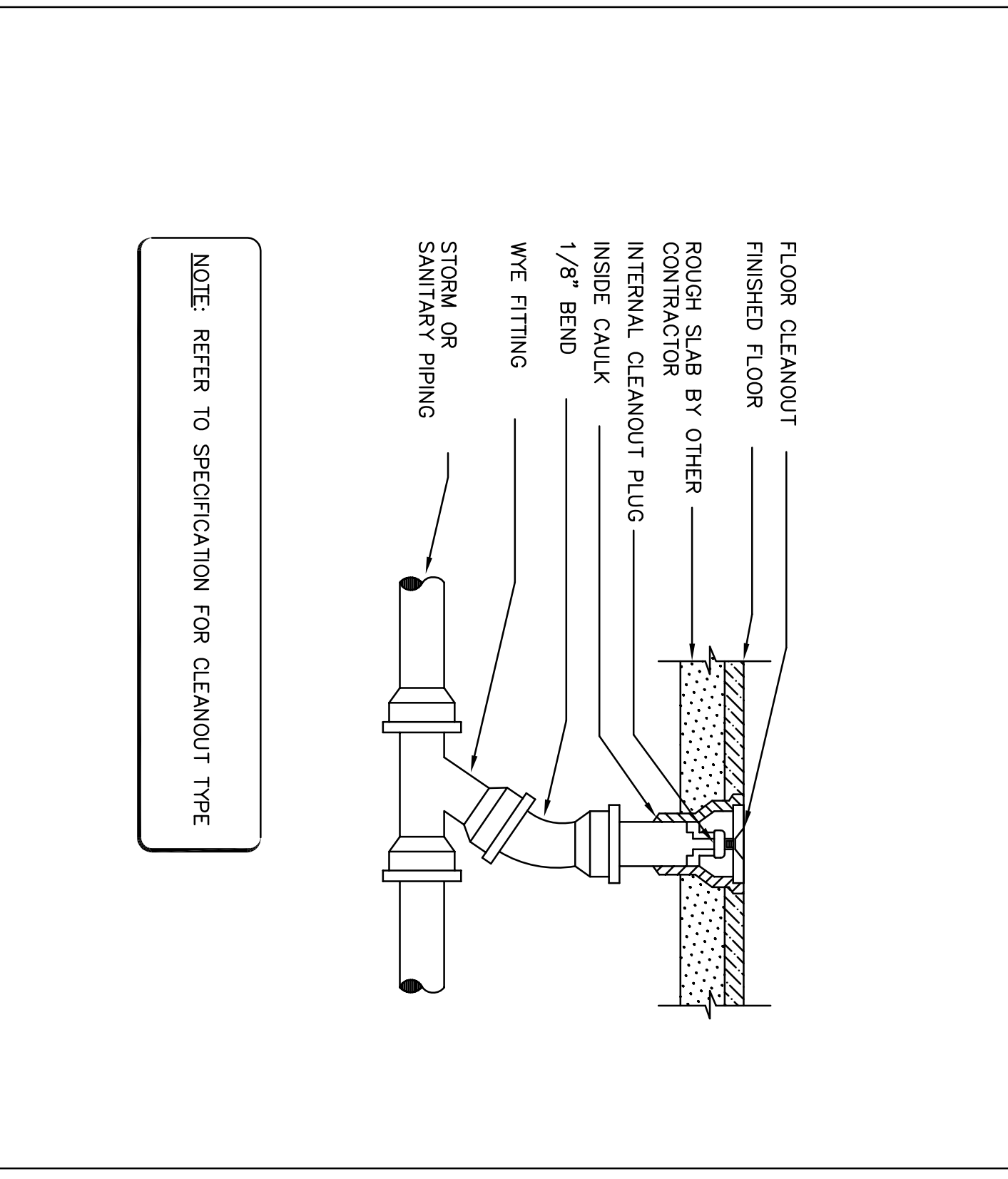
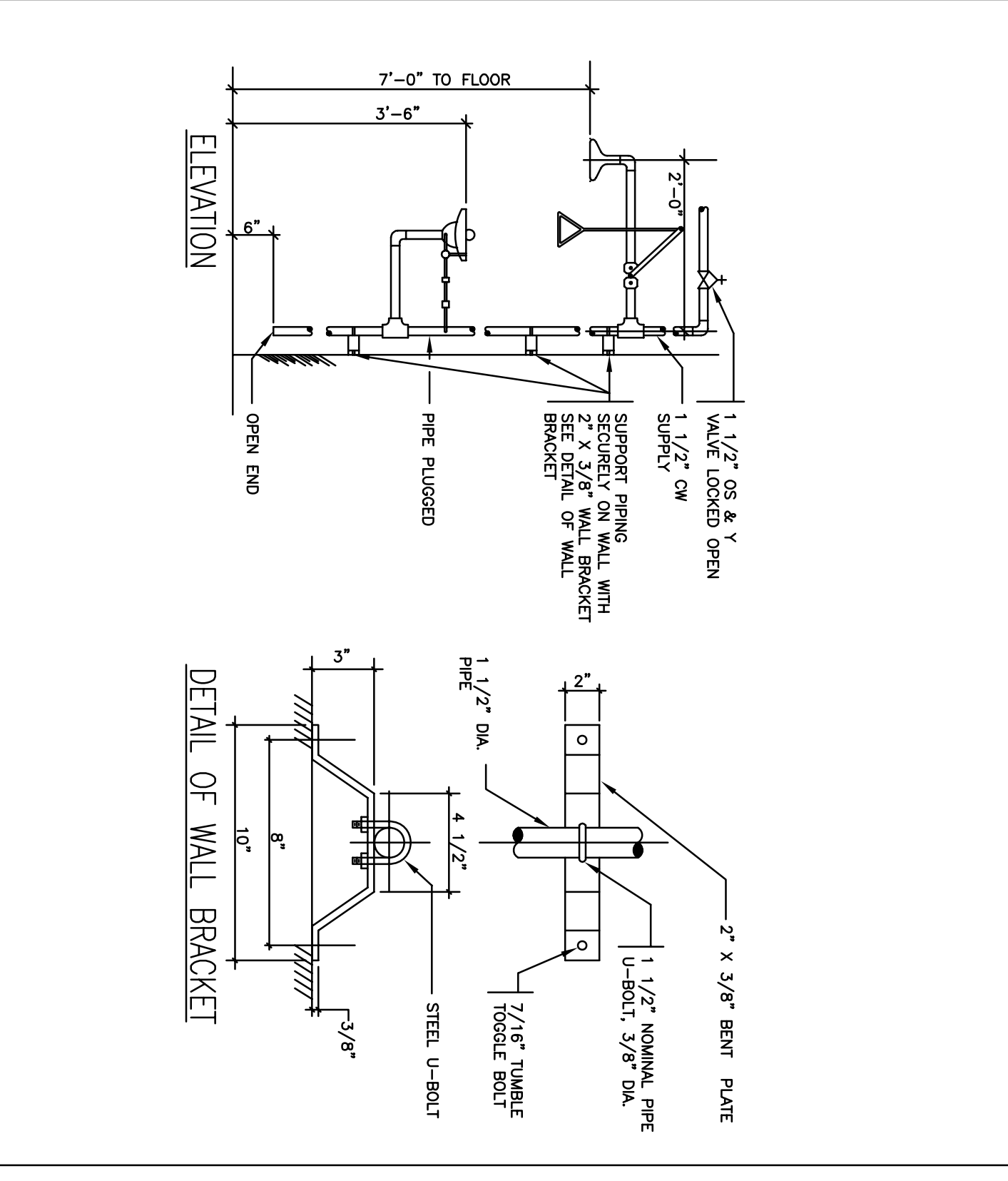
Hoffmann
 Project Location
 2120 Arch Street
 Philadelphia, PA 19103
 Phone: (215) 568-8250

MERCY
 Mercy Health Core
 System of Mercy
 FORE RIVER SHORT
 STAY HOSPITAL

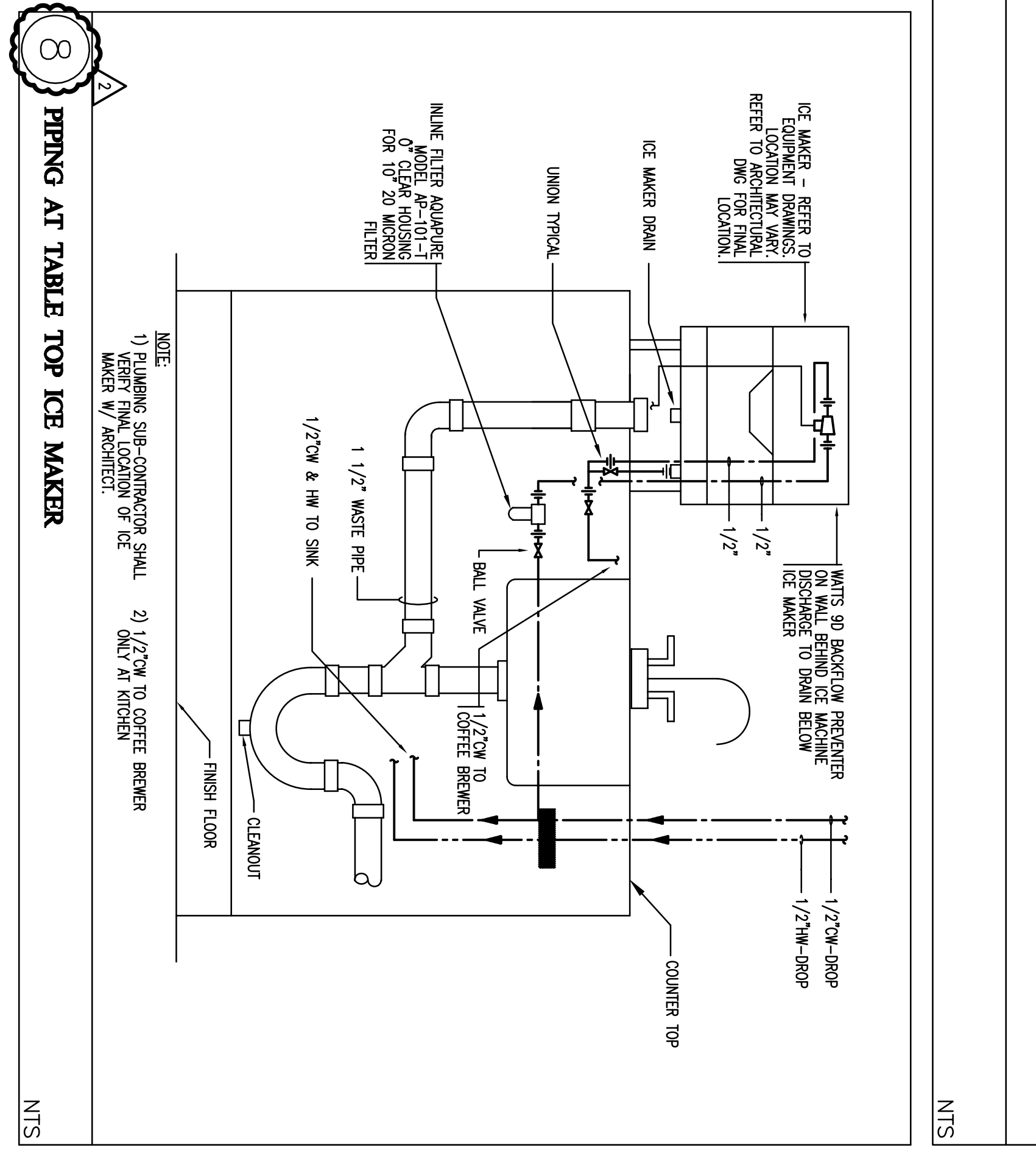
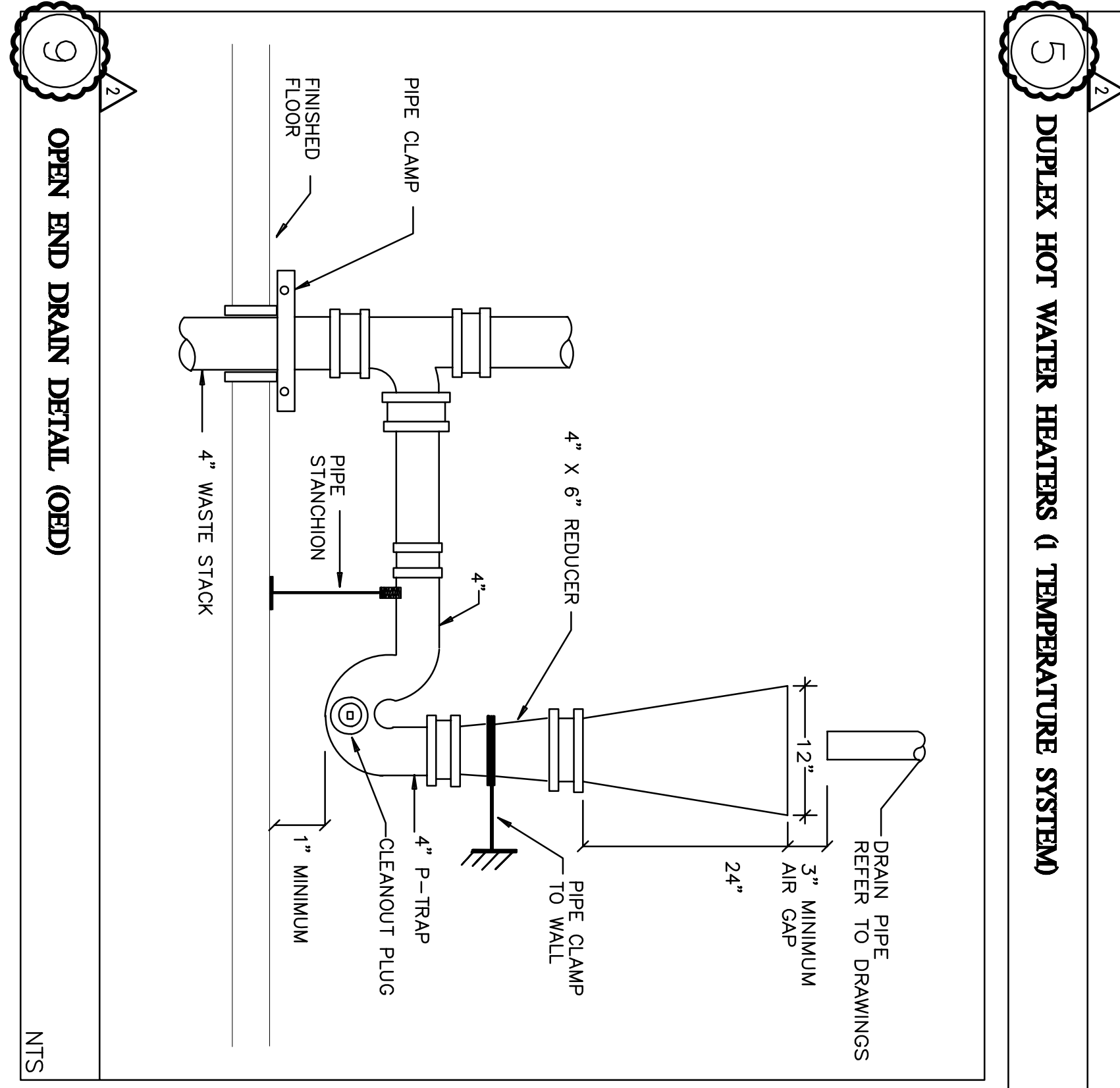
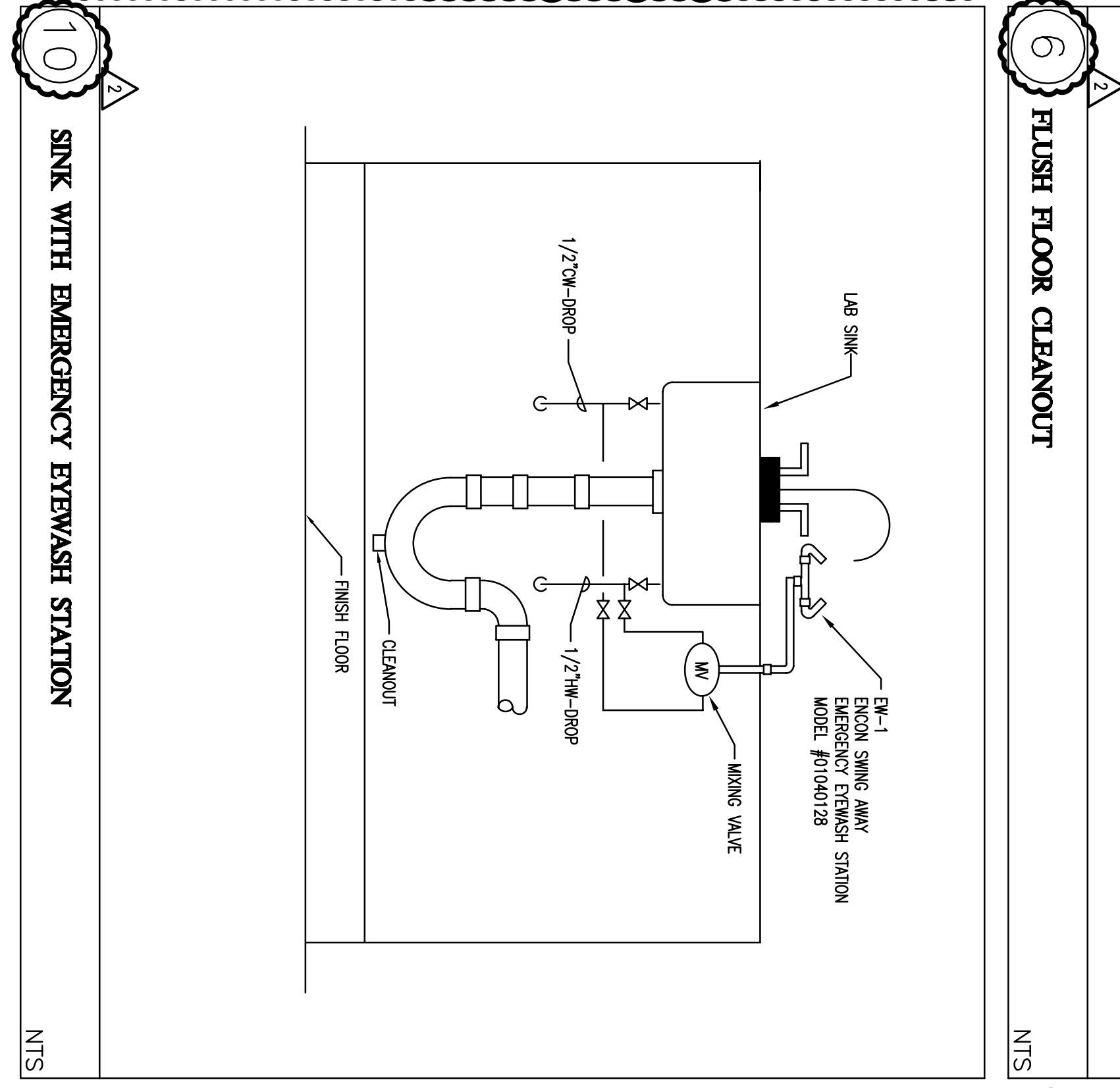
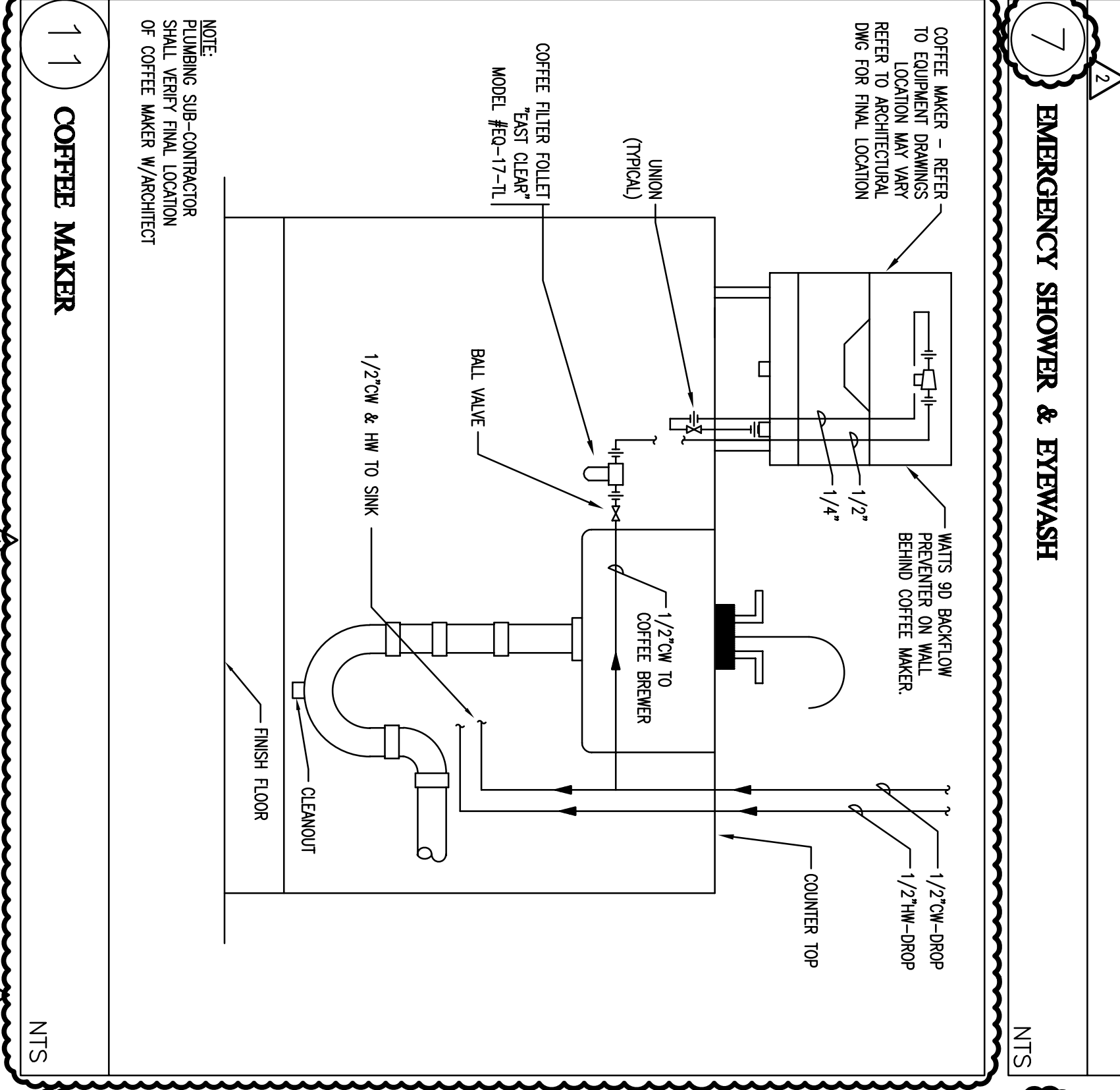
Project Number: F05-4898
 Drawing Title and Number: PLUMBING DETAIL SHEET 1
P0.02



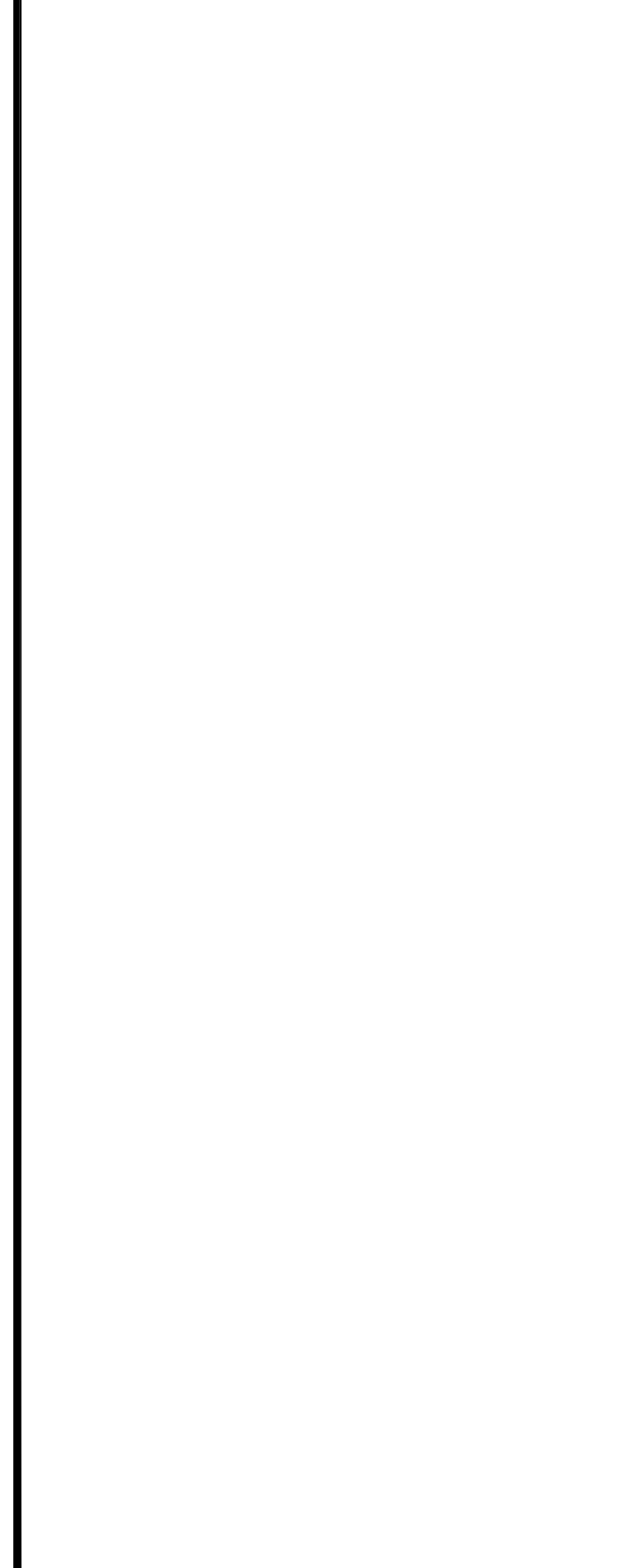
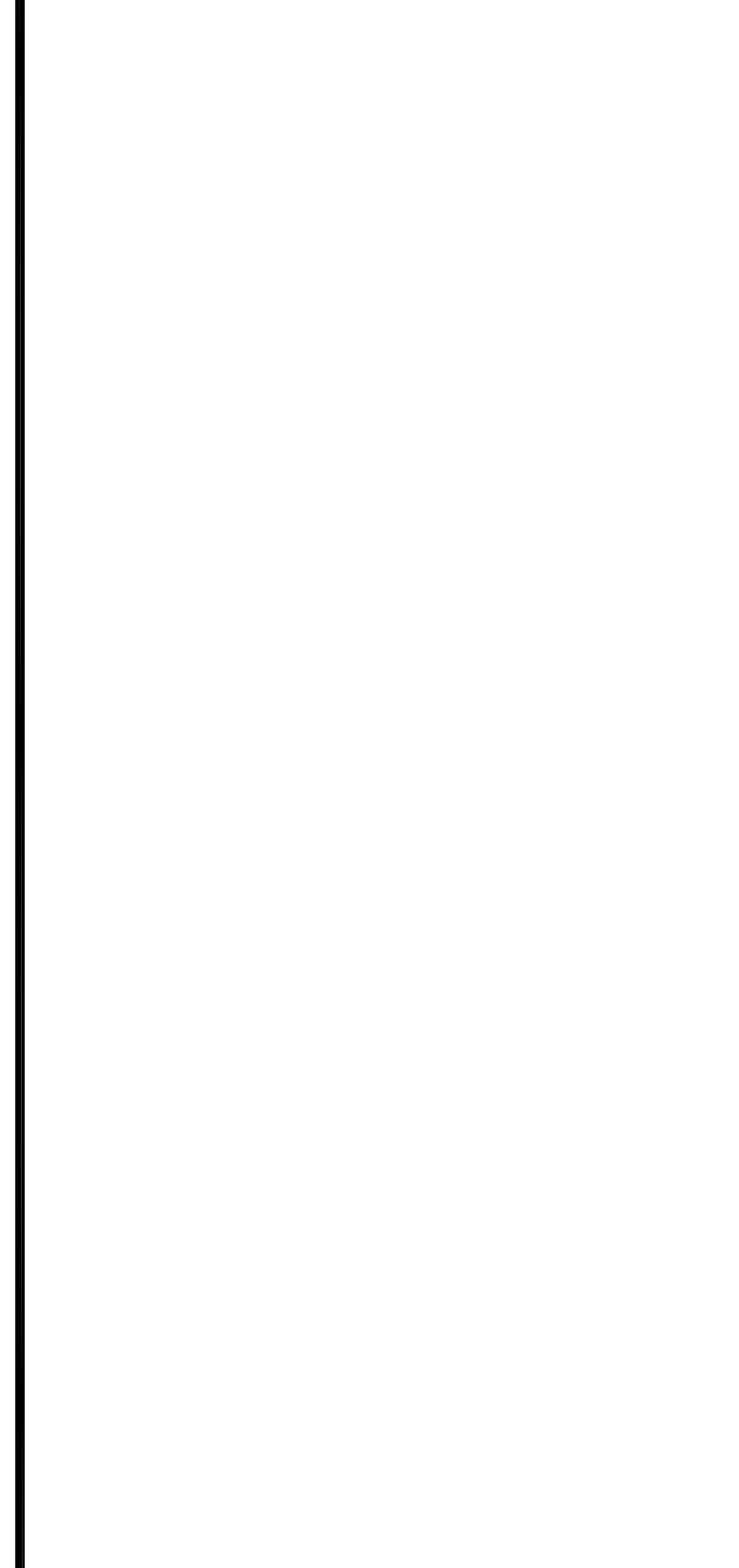
NOTES:
 1. SUPPORT PIPING AND FITTINGS AS REQUIRED TO CONFORM TO MANUFACTURERS REQUIREMENTS. A CLEAR SPACE OF 3" IN FRONT, 1" AT EACH END AND 1" FROM WALL (MINIMUM).



NOTES:
 1) PLUMBING SUB-CONTRACTOR SHALL VERIFY FINAL LOCATION OF COFFEE MAKER W/ARCHITECT.
 2) 1/2" CW TO COFFEE BREWER ON WALL BEHIND ICE MACHINE (SEE W/ARCHITECT).
 3) 1/2" CW & HW TO SINK ON WALL BEHIND ICE MACHINE (SEE W/ARCHITECT).



NOTE: THE PLUMBING SUB-CONTRACTOR SHALL VERIFY FINAL LOCATION OF COFFEE MAKER W/ARCHITECT.



NOTE: THE PLUMBING SUB-CONTRACTOR SHALL VERIFY FINAL LOCATION OF COFFEE MAKER W/ARCHITECT.

Project Number: F05-4898
 Drawing Title and Number: PLUMBING DETAIL SHEET 1
P0.02