

Consultant
 CIVIL ENGINEER
 DeLuca-Hoffman Associates, Inc.
 778 Main Street, Suite 8
 South Portland, ME 04106
 Phone: (207) 775-1121
 Fax: (207) 879-0896

Consultant
 ASSOCIATE ARCHITECT/STRUCTURAL ENGINEER
 SMRT
 144 Fore Street P.O. Box 618
 Portland, Maine 04104
 Phone: (207) 772-3846
 Fax: (207) 772-1070

Consultant
 MECHANICAL/ELECTRICAL ENGINEER
 The Arsenal on the Charles
 311 Arsenal Street
 Watertown, MA 02472-5789
 Phone: (617) 376-3100
 Fax: (617) 924-9339

Consultant
 EQUIPMENT PLANNING
 Gene Burton & Associates
 1893 General George Patton Drive
 Franklin, Tennessee 37067
 Phone: (615) 376-3100
 Fax: (615) 376-3114

Consultant
 CONSTRUCTION MANAGER
 Gilbane Building Company
 7 Jackson Walkway
 Providence, Rhode Island 02903
 Phone: (401) 456-5905
 Fax: (401) 456-5516

Consultant
 FOOD SERVICE
 Inman Foodservice, LLC
 1808 West End Ave. Suite 1400
 Nashville, TN 37203
 Phone: (615) 321-5591
 Fax: (615) 321-5689

It is the responsibility of the Construction Manager/General Contractor and all Sub-Contractors to verify all dimensions and accept conditions of prior work by related trades before proceeding with any work.

Date
 11/10/06 Final-Issued for Construction

Drawn By
 FA

Scale
 1/8"=1'-0"

Francis

Cauffman

Foley

Hoffmann

Francis Cauffman
 Foley Hoffmann
 Architects Ltd. 2120 Arch Street
 Philadelphia, PA 19103
 215-568-8250

Project Title

Mercy Health Care
 System of Maine

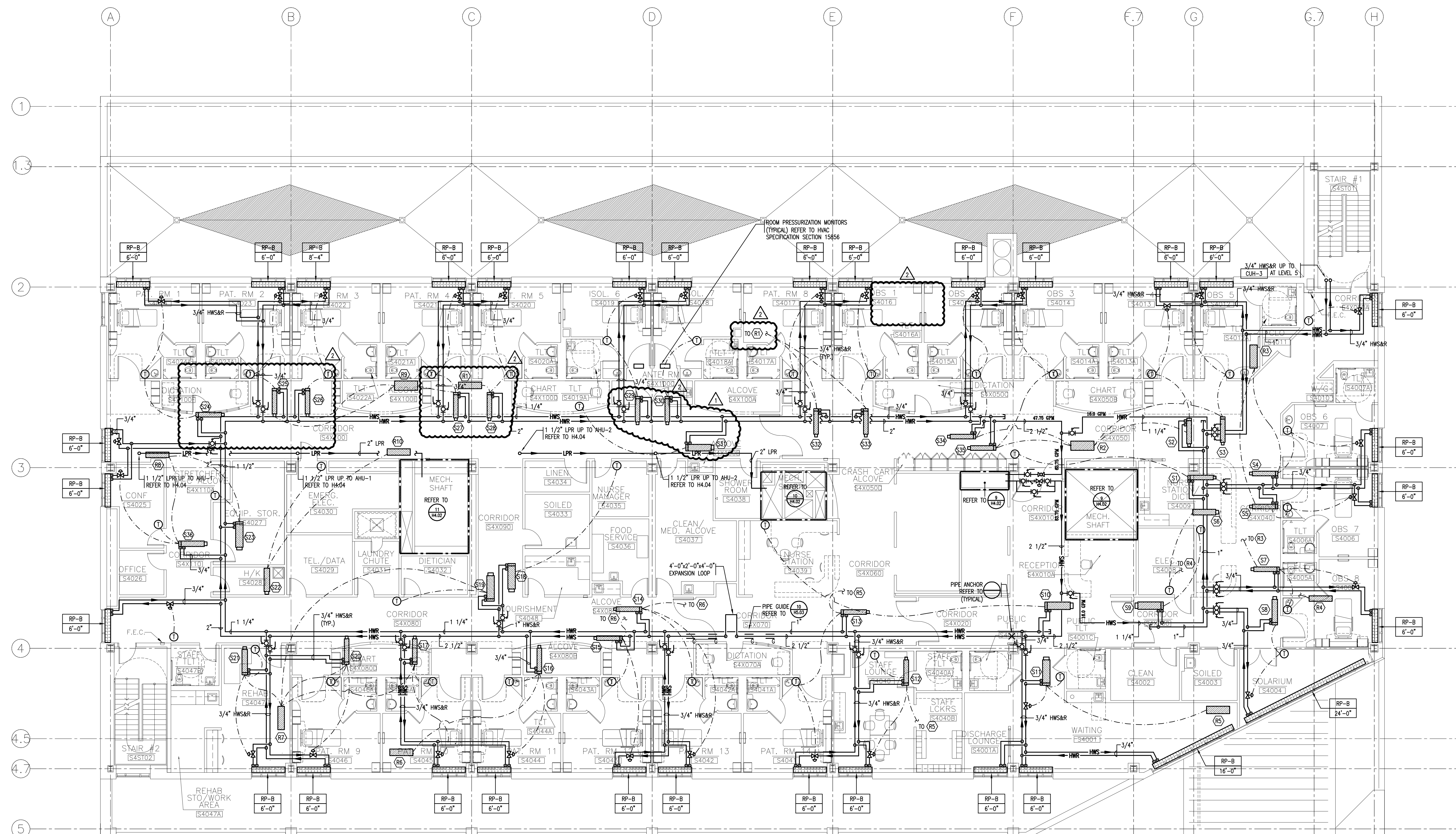
FORE RIVER SHORT
 STAY HOSPITAL



Project Number
 F05-4898

Drawing Title and Number
 HVAC
 PIPING
 LEVEL 4 PLAN

H2.04



(S1)	(S2)	(S3)	(S4)	(S5)	(S6)	(S7)	(S8)	(S9)	(S10)	(S11)	(S12)	(S13)	(S14)	(S15)	(S16)	(S17)	(S18)	(S19)	(S20)	(S21)	(S22)	(S23)	(S24)	(S25)	(S26)	(S27)	(S28)	(S29)	(S30)	(S31)	(S32)	(S33)	(S34)	(S35)	(S36)		
CV-8	VCV-6	VCV-6	VCV-8	W-8	VCV-6	CV-12	CV-12	VCV-10	VCV-6	VCV-6	VCV-6	VCV-6	VCV-6	VCV-6	VCV-6	VCV-6	VCV-6	VCV-6	VCV-6	VCV-6	VCV-6	VCV-6	VCV-6	VCV-6	VCV-6	VCV-6	VCV-6	VCV-6	VCV-6	VCV-6	VCV-6	VCV-6	VCV-6	VCV-6	VCV-6		
700	250	250	250	250	250	200	1375	1275	475	250	250	250	250	250	250	250	250	250	250	250	250	250	250	250	250	250	250	250	250	250	250	250	250	250	250	250	
2.25	1.0	1.0	1.0	1.0	1.0	0.5	0.75	4.5	4.0	1.5	1.0	1.0	1.0	1.0	1.0	1.0	1.0	1.0	1.0	1.0	1.0	1.0	1.0	1.0	1.0	1.0	1.0	1.0	1.0	1.0	1.0	1.0	1.0	1.0	1.0	1.0	
-	-	-	-	-	NO COIL	-	-	-	-	-	-	-	-	-	-	-	-	-	-	-	-	-	-	-	-	-	-	-	-	-	-	-	-	-	-	-	-

(R1)	(R2)	(R3)	(R4)	(R5)	(R6)	(R7)	(R8)	(R9)	(R10)
WR-12	WR-19	WR-19	WR-8	WR-19	WR-12	WR-14	WR-12	WR-12	WR-10
825	2450	2325	500	2150	1375	1800	1300	1150	900
425	1225	1175	250	1075	500	900	1300	425	450