

Revisions

1	ADDENDUM #1	11.22.06
2	ADDENDUM #2	12.06.06

- Consultant  
**CIVIL ENGINEER**  
 DeLuca-Hoffman Associates, Inc.  
 778 Main Street, Suite 8  
 South Portland, ME 04106  
 Phone: (207) 775-1121  
 Fax: (207) 879-0896
- Consultant  
**ASSOCIATE ARCHITECT/STRUCTURAL ENGINEER**  
 SMRT  
 144 Fore Street P.O. Box 618  
 Portland, Maine 04104  
 Phone: (207) 772-3846  
 Fax: (207) 772-1070
- Consultant  
**MECHANICAL/ELECTRICAL ENGINEER**  
 The Arsenal on the Charles  
 311 Arsenal Street  
 Watertown, MA 02472-5789  
 Phone: 617.254.0016  
 Fax: 617.924.9339
- Consultant  
**EQUIPMENT PLANNING**  
 Gene Burton & Associates  
 1893 General George Patton Drive  
 Franklin, Tennessee 37067  
 Phone: (615) 376-3100  
 Fax: (615) 376-3114
- Consultant  
**CONSTRUCTION MANAGER**  
 Gilbane Building Company  
 7 Jackson Walkway  
 Providence, Rhode Island 02903  
 Phone: (401) 456-5905  
 Fax: (401) 456-5516
- Consultant  
**FOOD SERVICE**  
 Inman Foodservice, LLC  
 1808 West End Ave, Suite 1400  
 Nashville, TN 37203  
 Phone: (615) 321-5591  
 Fax: (615) 321-5689

It is the responsibility of the Construction Manager/General Contractor and all Sub-Contractors to verify all dimensions and accept conditions of prior work by related trades before proceeding with any work.

Date  
 11/10/06 Final-Issued for Construction  
 Drawn By  
 DPB  
 Scale  
 1/8"=1'-0"

Francis  
 Cauffman  
 Foley  
 Hoffmann

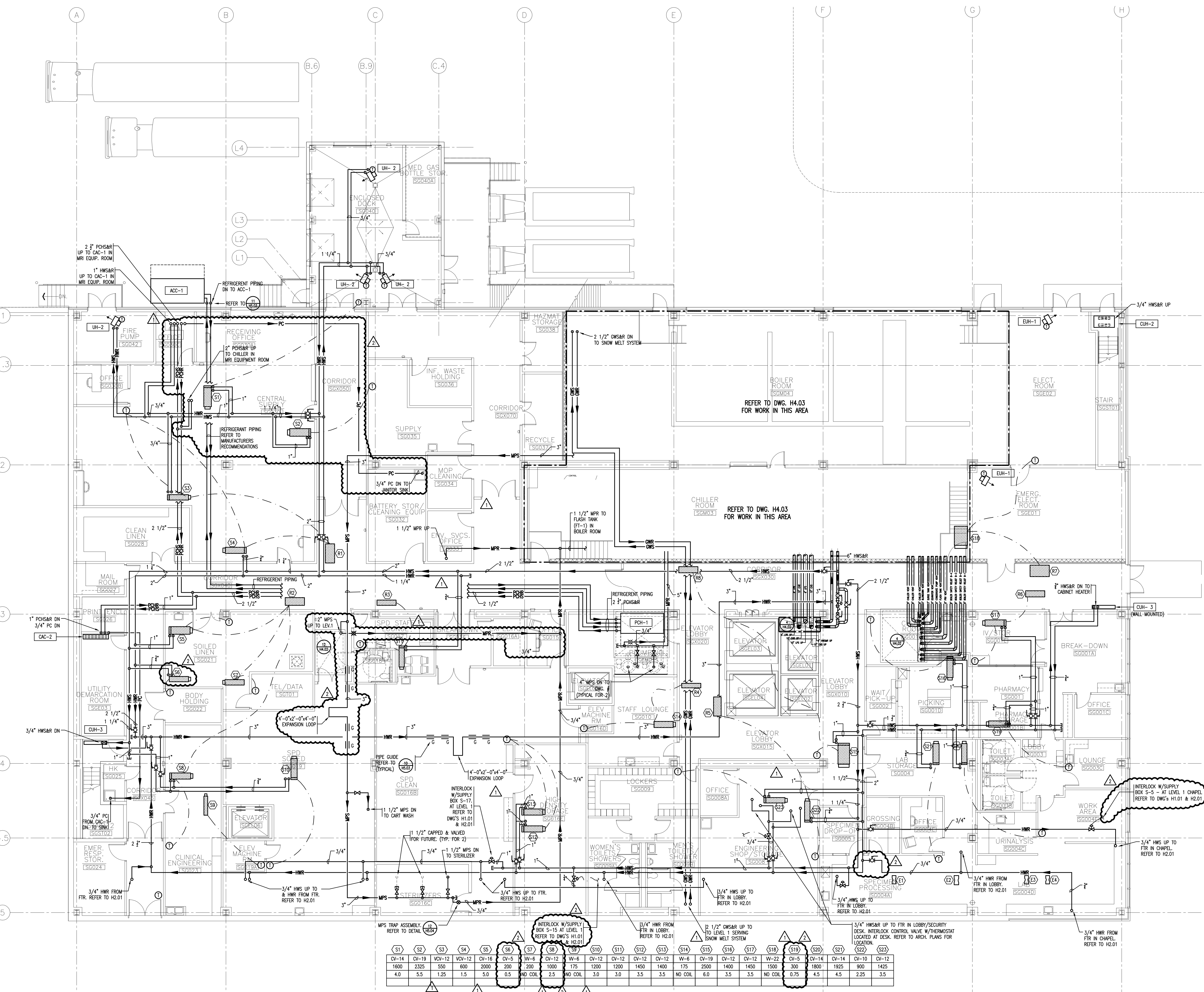
Francis Cauffman  
 Foley Hoffmann  
 Architects Ltd.

2120 Arch Street  
 Philadelphia, PA 19103  
 215-568-8250

Project Title  
 Mercy Health Care  
 System of Maine  
 FORE RIVER SHORT  
 STAY HOSPITAL

Project Number  
 F05-4898

Drawing Title and Number  
 HVAC  
 PIPING  
 GROUND LEVEL PLAN  
**H2.00**



1 GROUND FLOOR PLAN  
 A1.00 1/8" = 1'-0"

S1	S2	S3	S4	S5	S6	S7	S8	S9	S10	S11	S12	S13	S14	S15	S16	S17	S18	S19	S20	S21	S22	S23
CV-14	CV-19	VCV-12	CV-16	CV-5	W-6	CV-12	W-6	CV-12	CV-12	CV-12	CV-12	W-6	CV-19	CV-12	CV-12	W-22	CV-5	CV-14	CV-10	CV-12		
1600	2325	550	600	2000	200	1000	175	1200	1200	1450	1400	175	2500	1400	1450	1500	300	1800	1925	900	1425	
4.0	5.5	1.25	1.5	5.0	0.5	NO COIL	2.5	NO COIL	3.0	3.0	3.5	3.5	NO COIL	6.0	3.5	3.5	NO COIL	0.75	4.5	4.5	2.25	3.5

R1	R2	R3	R4	R5	R6	R7	R8
WR-16	WR-16	CVR-12	WR-8	WR-14	CVR-22	CVR-12	CVR-12
2300	950	1400	450	1350	1450	3000	1400
1150	1875	1400	225	675	1450	3000	1400

E1	E2	E3	E4
HV-1	CEAV-2	HV-2	CEAV-1
600	1525	800	1100
600	1525	800	1100

MERCY AT THE FORE RIVER HOSPITAL  
 FIRE RATING & U.L. DESIGN SCHEDULE  
TABLE 101 AND 102 FROM NFPA 96A, 2005 EDITION, LISTED AS AN APPROVED LISTING AGENCY  
 U.L. DESIGN SCHEDULES  
 U.L. DESIGN SCHEDULES  
 U.L. DESIGN SCHEDULES  
 U.L. DESIGN SCHEDULES