

GENERAL CONSTRUCTION

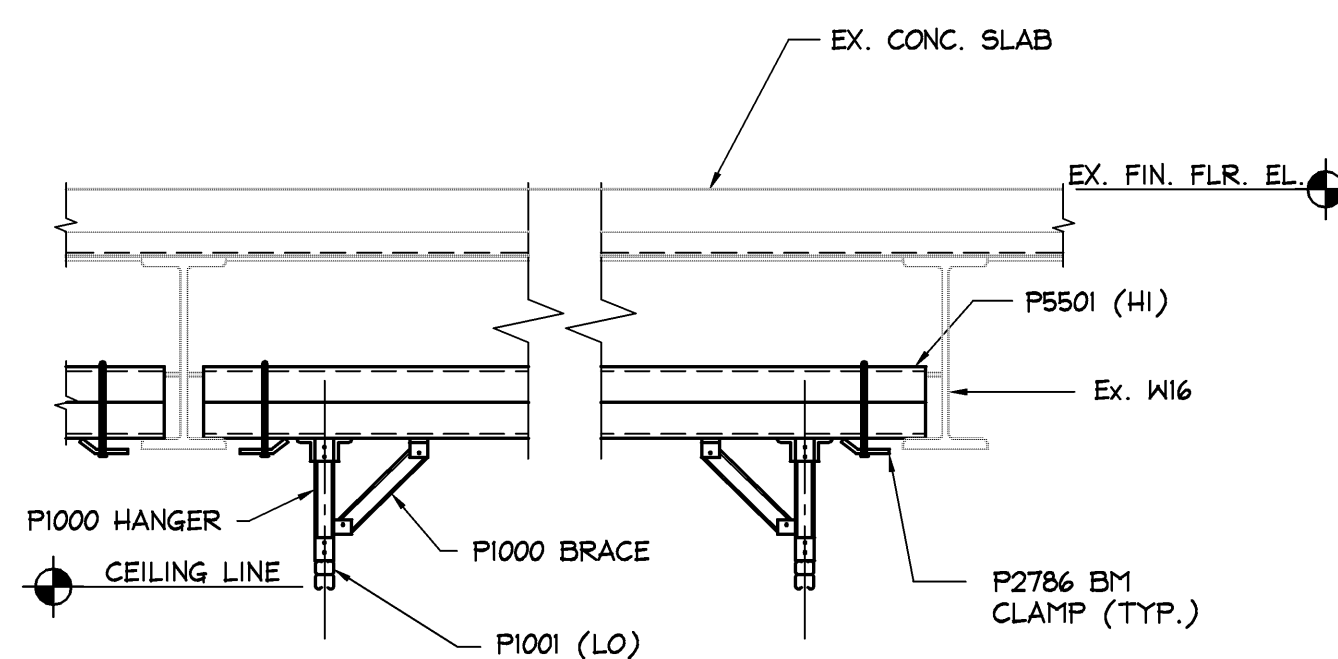
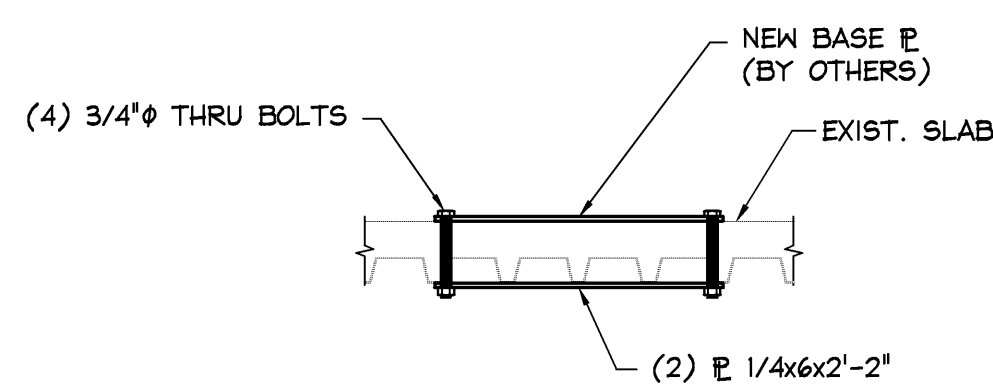
- NOTES, TYPICAL DETAILS, AND SCHEDULES APPLY TO ALL STRUCTURAL WORK UNLESS NOTED OTHERWISE. TYPICAL DETAILS ARE TO BE USED FOR ALL CONDITIONS WHERE THE DETAIL IS APPLICABLE, WHETHER OR NOT NOTED ON PLAN. TYPICAL DETAILS MAY BE SLIGHTLY ALTERED IF REQUIRED DUE TO PROJECT CONDITIONS, ONLY WHEN SUBMITTED AND THE ENGINEER'S APPROVAL IS OBTAINED PRIOR TO PERFORMING THE WORK.
- ALL DIMENSIONS AND ELEVATIONS SHOWN ON STRUCTURAL DRAWINGS, WITH THE EXCEPTION OF STRUCTURAL MEMBER SIZES, ARE GENERATED BY OTHER DISCIPLINES. ANY DIMENSIONS OR ELEVATIONS OMITTED OR NOT SHOWN ON THE STRUCTURAL DRAWINGS SHOULD BE OBTAINED FROM THE DRAWINGS OF THE OTHER DISCIPLINES. STRUCTURAL DRAWINGS ARE NOT STAND-ALONE DOCUMENTS AND SHOULD BE USED IN CONJUNCTION WITH AND COORDINATED WITH THE SPECIFICATIONS, ARCHITECTURAL DRAWINGS AND ALL OTHER DISCIPLINE'S DRAWINGS. IF THERE IS A DISCREPANCY BETWEEN DRAWINGS, IT IS THE CONTRACTOR'S RESPONSIBILITY TO NOTIFY THE ENGINEER AND ARCHITECT PRIOR TO PERFORMING THE WORK.
- IF DIFFERENCES OCCUR WITHIN OR BETWEEN DRAWINGS AND SPECIFICATIONS REGARDING MATERIALS, STRENGTHS OR QUANTITIES, THE BETTER MATERIAL, HIGHER STRENGTH, AND GREATER QUANTITY INDICATED, SPECIFIED OR NOTED SHALL BE PROVIDED.
- REPRODUCTIONS OF STRUCTURAL DRAWINGS FOR SUBMITTAL AS SHOP DRAWINGS IS PROHIBITED, UNLESS WRITTEN APPROVAL IS REQUESTED BY THE CONTRACTOR AND IT IS GRANTED BY O DONNELL & NACCARATO, INC.
- DO NOT SCALE DRAWINGS TO OBTAIN DIMENSIONAL INFORMATION.
- THESE DRAWINGS DO NOT DEFINE SCOPE OF CONTRACTOR OR SUBCONTRACTOR CONTRACTS.
- AT ALL TIMES, THE CONTRACTOR SHALL BE SOLELY RESPONSIBLE FOR THE CONDITIONS OF THE JOBSITE INCLUDING MEANS AND METHODS OF CONSTRUCTION AND SAFETY OF PERSONS AND PROPERTY. THE ENGINEER'S PRESENCE OR REVIEW OF WORK AT THE JOBSITE IS FOR GENERAL COMPLIANCE WITH THE DESIGN INTENT ONLY AND IS NOT EVER TO BE CONSTRUED AS A REVIEW OF MEANS AND METHODS OF CONSTRUCTION AND SAFETY METHODS.
- THE CONTRACTOR IS RESPONSIBLE FOR DETERMINING ALLOWABLE CONSTRUCTION LOADS AND FOR PROTECTING THE COMPLETED OR INCOMPLETED STRUCTURAL FRAMING FROM DAMAGE DUE TO TEMPORARY CONSTRUCTION LOADINGS.
- COSTS OF INVESTIGATION AND/OR REDESIGN DUE TO CONTRACTOR ERRORS WILL BE AT THE CONTRACTOR'S EXPENSE.
- ANY APPROVED CONTRACTOR REQUESTED CHANGES TO THESE DRAWINGS WILL BE DONE AT NO COST TO THE OWNER. APPROVAL OF CONTRACTOR REQUESTED CHANGES IN NO WAY STATES OR IMPLIES APPROVAL OF A CHANGE IN SCOPE OR CHANGE IN CONTRACT COST.
- UNLESS EXPLICITLY NOTED AS ISSUED FOR BID, THESE DRAWINGS ARE NOT SUITABLE FOR OBTAINING BIDS FROM GENERAL OR SUBCONTRACTORS. BIDDING OF DRAWINGS PRIOR TO DESIGN COMPLETION AND ISSUED FOR BID IS DONE AT THE SOLE RISK OF THE BIDDING CONTRACTOR. ADDITIONS OR CORRECTIONS TO DRAWINGS THAT ARE BID PRIOR TO DESIGN COMPLETION AND ISSUED FOR BID WILL NOT BE CONSIDERED AS DESIGN ERRORS OR OMISSIONS. STRUCTURAL DESIGN, BY NATURE, CANNOT BE COMPLETE PRIOR TO COMPLETION OF ARCHITECTURAL AND MECHANICAL DRAWINGS.
- ALL REFERENCES TO FRERPROOFING ON THE STRUCTURAL DRAWINGS ARE FOR REFERENCE ONLY. SEE ARCHITECTURAL DRAWINGS AND SPECIFICATIONS FOR ALL FRERPROOFING DETAILS AND REQUIREMENTS.
- IF THE EXISTING FIELD CONDITIONS DO NOT PERMIT THE INSTALLATION OF THE WORK IN ACCORDANCE WITH THE DETAILS SHOWN, THE CONTRACTOR SHALL NOTIFY THE ARCHITECT/ENGINEER IMMEDIATELY. THE CONTRACTOR MUST PROVIDE A SKETCH OF THE CONDITION WITH HIS PROPOSED MODIFICATION OF THE DETAILS GIVEN ON THE CONTRACT DOCUMENTS. THIS SKETCH MUST BE SUBMITTED TO AND APPROVAL MUST BE GRANTED BY THE ENGINEER PRIOR TO PERFORMING THE WORK.
- SUBMIT SHOP DRAWINGS SUCH THAT BY THE TIME THEY ARE RECEIVED BY O DONNELL & NACCARATO, INC., THERE WILL BE AT LEAST 14 DAYS BEFORE REVIEWED SUBMITTALS WILL BE NEEDED. ANY REVIEW THAT IS REQUIRED MORE EXPEDITENTLY WILL BE AT THE CONTRACTOR'S EXPENSE. SHOP DRAWINGS SHALL BEAR THE CONTRACTOR'S STAMP OR APPROVAL CERTIFYING THAT HE HAS VERIFIED ALL FIELD MEASUREMENTS, CONSTRUCTION CRITERIA, MATERIALS AND SIMILAR DATA AND HAS CHECKED EACH DRAWING FOR COMPLETENESS, COORDINATION AND COMPLIANCE WITH THE CONTRACT DOCUMENTS. IF REVIEW OF AN INCOMPLETE SHOP DRAWING IS REQUIRED, THAT SHOP DRAWING SHALL BE CLEARLY MARKED AS INCOMPLETE. THE AREA THAT NEEDS TO BE REVIEWED SHALL BE CLEARLY NOTED WITH AN EXPLANATION FOR THE REASON FOR PARTIAL APPROVAL.
- SIZE AND/OR LOCATION OF EXISTING STRUCTURES AND UTILITIES SHOWN ON THE STRUCTURAL DOCUMENTS ARE FOR THE CONTRACTOR'S CONVENIENCE ONLY. THE CONTRACTOR IS SOLELY RESPONSIBLE TO VERIFY BY FIELD MEASUREMENTS/INVESTIGATION THE SIZE AND/OR LOCATION OF ALL EXISTING STRUCTURES AND UTILITIES.

EXISTING CONDITIONS/DEMOLITION

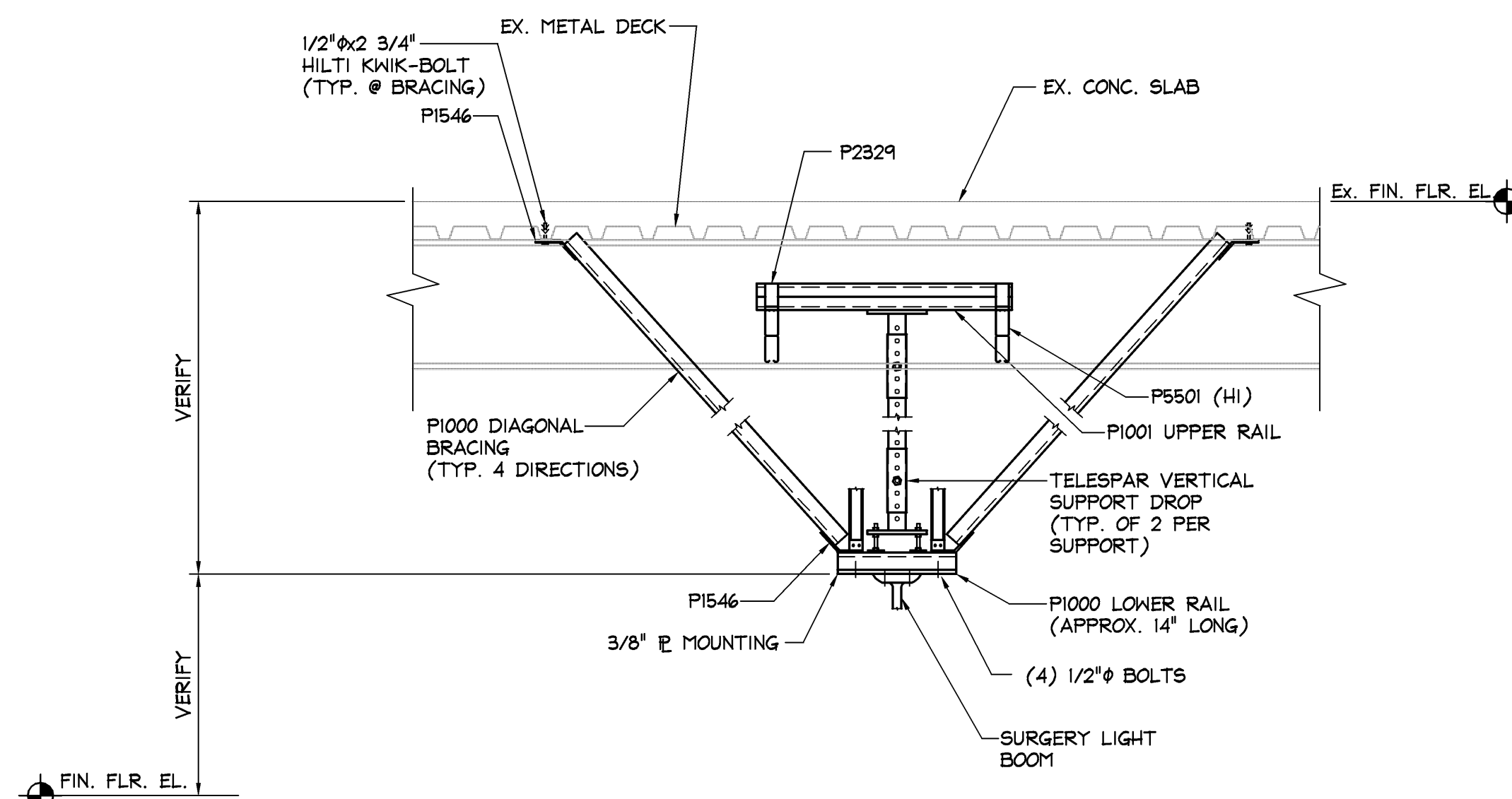
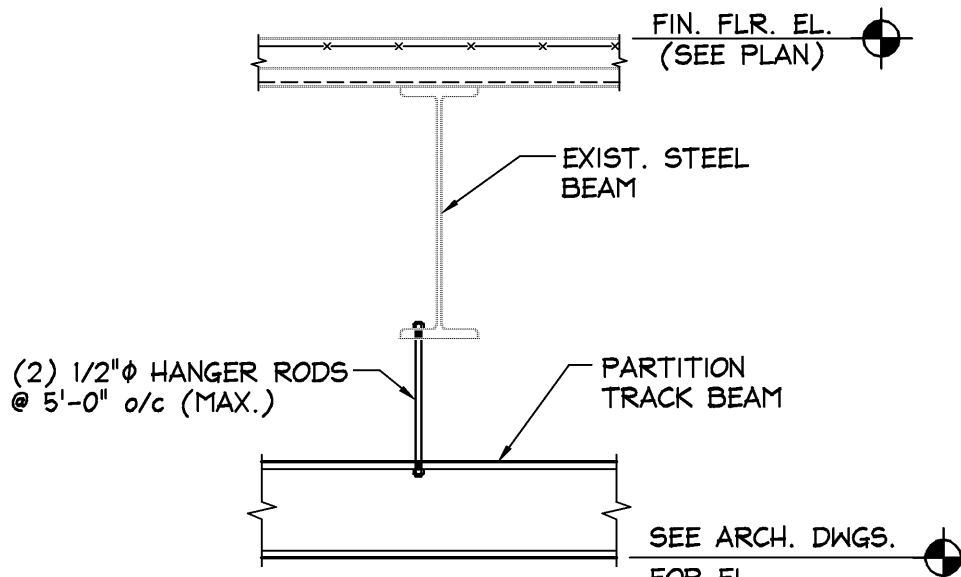
- SHORING, BRACING AND PROTECTION OF EXISTING AND ADJACENT STRUCTURES DURING CONSTRUCTION IS THE SOLE RESPONSIBILITY OF THE CONTRACTOR. PROTECT AND MAINTAIN THE INTEGRITY OF ADJACENT STRUCTURES, BUILDINGS AND STREETS.
- ALL EXISTING DIMENSIONS, ELEVATIONS, AND LOCATIONS OF EXISTING STRUCTURES, OR RELATIVE TO EXISTING STRUCTURES, THAT ARE SHOWN ON THE STRUCTURAL DOCUMENTS WILL BE VERIFIED BY FIELD MEASUREMENTS PERFORMED BY THE CONTRACTOR. ANY DISCREPANCIES SHALL BE REPORTED TO THE ARCHITECT AND ENGINEER.
- THE STRUCTURAL DOCUMENTS HAVE BEEN PREPARED BASED ON AVAILABLE KNOWLEDGE OF EXISTING CONDITIONS. IF, DURING DEMOLITION, EXCAVATION OR CONSTRUCTION, ACTUAL CONDITIONS ARE DISCOVERED TO DIFFER FROM THOSE INDICATED ON THE DOCUMENTS, THE ARCHITECT AND ENGINEER SHALL BE NOTIFIED.
- ALL STRUCTURAL DEMOLITION MUST BE COORDINATED WITH THE ARCHITECTURAL, MECHANICAL, ELECTRICAL AND PLUMBING DRAWINGS.
- SELECTIVELY DEMOLISH STRUCTURAL COMPONENTS AS REQUIRED TO CONSTRUCT NEW WORK PRIOR TO ANY DEMOLITION WORK, AN ENGINEERING SURVEY REPORT OF THE STRUCTURE SHALL BE PREPARED BY THE CONTRACTOR TO DOCUMENT THE CONDITION OF THE FRAMING, FLOORS AND WALLS. ANY ADJACENT STRUCTURE WHERE OCCUPANTS MAY BE EXPOSED SHALL BE SIMILARLY REVIEWED.
- WHERE NEW FRAMING IS TO BE CONNECTED TO AN EXISTING STRUCTURE WITH BRCK OR CMU VENEER, THE VENEER SHALL BE REMOVED SUFFICIENTLY TO PERMIT CONNECTION OF THE NEW FRAMING DIRECTLY TO THE BUILDING SUPERSTRUCTURE. NEW BRCK OR CMU SHALL BE INSTALLED TO MATCH THE EXISTING ADJACENT SURFACES. MAINTAIN A SEPARATION BETWEEN THE BRCK OR CMU AND THE NEW FRAMING, UNLESS NOTED OTHERWISE ON DRAWINGS. FILL GAPS WITH BACKER RODS AND SEALANTS.

STEEL

- ALL STRUCTURAL STEEL SHALL BE FABRICATED AND ERECTED IN ACCORDANCE WITH THE LATEST AISC CODE. ALL WIDE FLANGE SHAPES SHALL BE ASTM A992 GRADE 50. ALL OTHER STRUCTURAL STEEL SHALL BE ASTM A36 UNLESS NOTED OTHERWISE. ALL STEEL SHALL HAVE A SHOP COAT OF RUST INHIBITING PAINT. DELTEE PAINT ON ALL STEEL TO RECEIVE SPRAYED-ON FRERPROOFING OR CONCRETE ENCASEMENT, AS NOTED ON ARCHITECTURAL DOCUMENTS. ALL STEEL SHALL BE THOROUGHLY CLEANED IN ACCORDANCE WITH SSPC-SP3 PRIOR TO PAINTING.
- ALL SHOP AND FIELD WELDING SHALL BE PERFORMED BY CERTIFIED WELDERS, AS DESCRIBED IN 'AMERICAN WELDING SOCIETY'S STANDARD QUALIFICATION PROCEDURE', AWS D1.1, TO PERFORM THE TYPE OF WORK REQUIRED.
- ALL CONNECTIONS SHALL BE BOLTED WITH MINIMUM 3/4" DIAMETER A325 OR A490 HIGH STRENGTH BOLTS OR WELDED. USE FULL DEPTH DOUBLE ANGLE CONNECTIONS ON ALL GRDOR AND BEAM CONNECTIONS TO COLUMNS. FULL BEAM CONNECTIONS MAY BE ONE-SIDED CONNECTIONS, UNLESS NOTED OTHERWISE. BOLTS SHALL BE AT 3 INCH O/C VERTICALLY. USE FULL DEPTH DOUBLE ANGLE CONNECTIONS WITH CLP ANGLES TOP AND/OR BOTTOM ON ALL GRDOR AND BEAM CONNECTIONS TO COLUMNS AT LOCATIONS AS SHOWN ON DRAWINGS. BOLTS SHALL BE AT 3 INCH O/C VERTICALLY. PROVIDE A MINIMUM 5/8 INCH THICK FULL DEPTH THRU-PLATE FOR ALL HSS AND PIPE COLUMN CONNECTIONS.
- ALL ALUMINUM AND STEEL MEMBERS SHALL BE TREATED OR PROPERLY SEPARATED TO PREVENT GALVANIC AND CORROSIIVE EFFECTS.
- ALL STEEL WELDING RODS SHALL BE E70XX.
- SUBMIT ALL STEEL SHOP DRAWINGS FOR REVIEW PRIOR TO ANY FABRICATION.
- STEEL FABRICATOR IS SOLELY RESPONSIBLE FOR SURVEYING AND VERIFICATION OF EXISTING CONDITIONS INCLUDING BUT NOT LIMITED TO THE LOCATION, ELEVATION, AND DIMENSIONS OF EXISTING WALLS AND FRAMING.
- IF UNSTRUT FRAMING DIFFERS FROM DOCUMENTS, IT SHALL BE DESIGNED, FABRICATED AND ERECTED BY PREFABRICATED FRAMING MANUFACTURER, IE UNSTRUT, POWERSTRUT OR APPROVED EQUAL MANUFACTURER IS RESPONSIBLE FOR COORDINATION AND COMPLIANCE WITH ARCHITECTURAL AND EQUIPMENT REQUIREMENTS/PARAMETERS INCLUDING STRENGTH AND DEFLECTION AND SHALL SUBMIT SEALED CALCULATIONS AND SHOP DRAWINGS WHICH COMPLY WITH ALL APPLICABLE CODES FOR REVIEW BY ENGINEER.

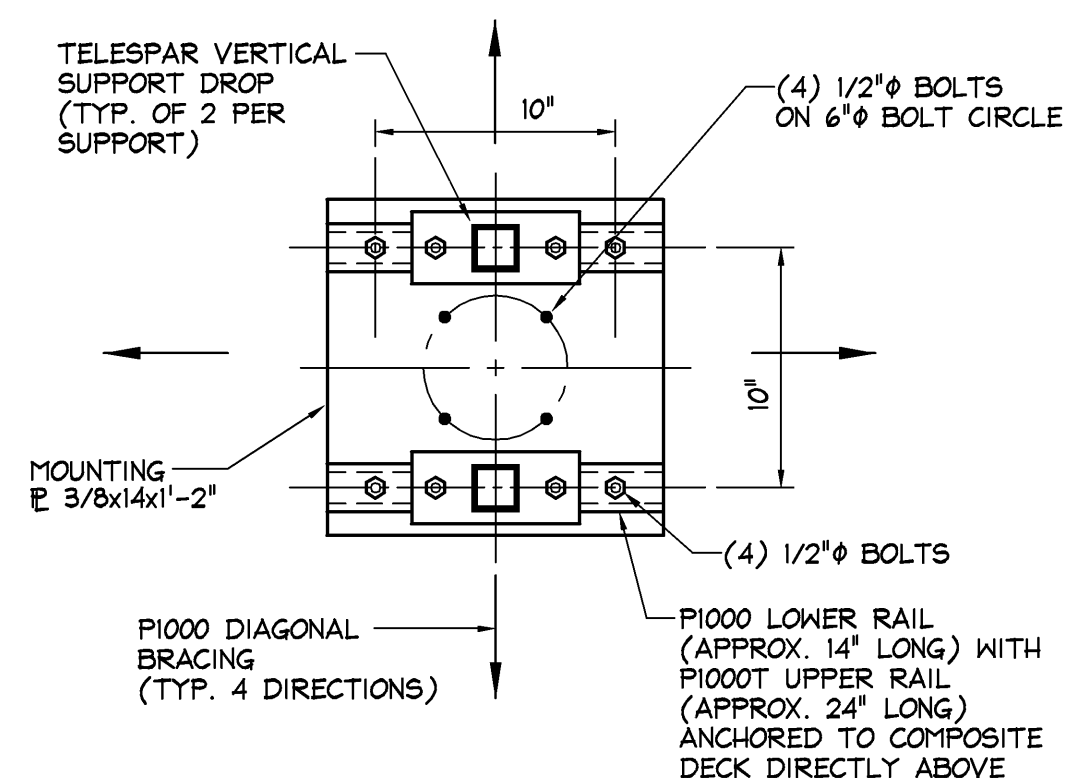


OTHER BRACES NOT SHOWN FOR CLARITY



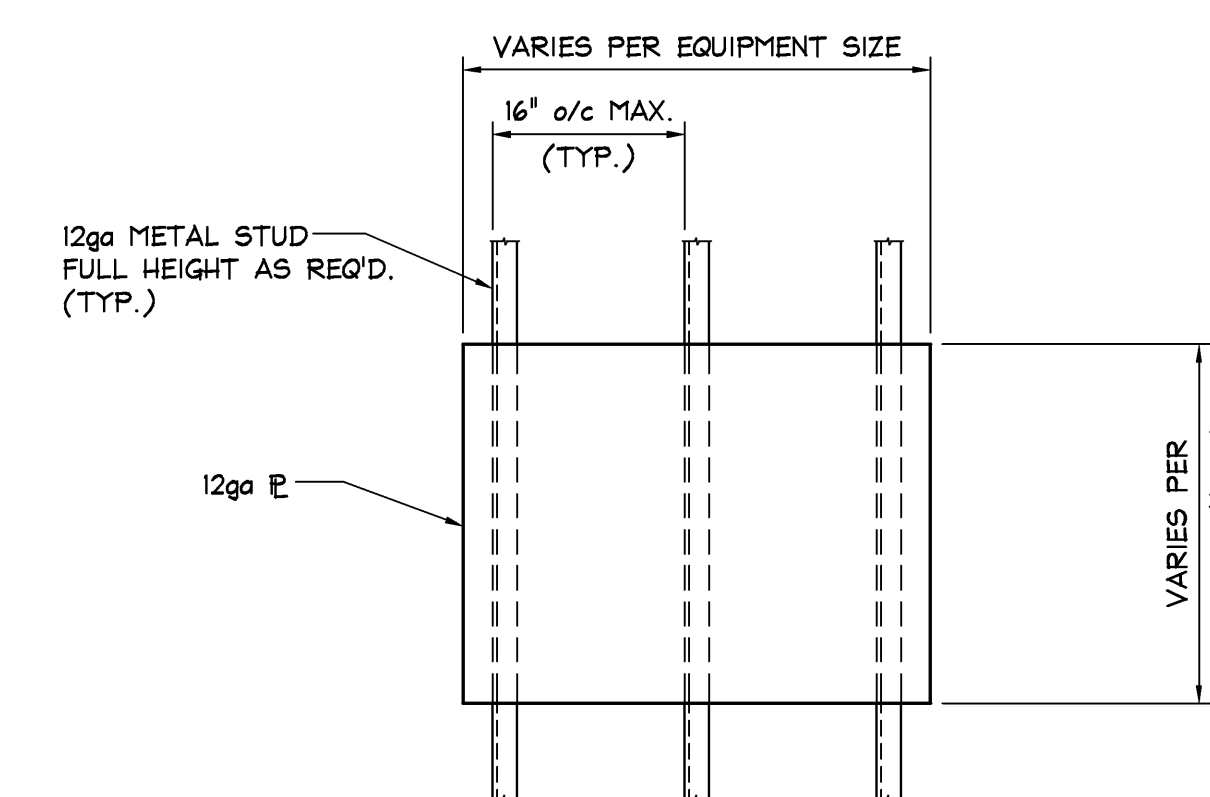
SURGE LIGHT SUPPORT
1) COORDINATE DIMENSIONS WITH EQUIPMENT MANUFACTURER

Section 3
S2.1



PLAN VIEW: SURGE LIGHT SUPPORT

1) COORDINATE DIMENSIONS WITH EQUIPMENT MANUFACTURER



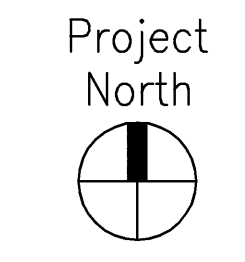
TYPICAL BACKUP SUPPORT FOR WALL-MOUNTED EQUIPMENT DETAIL

NOTES:
1) STUDS TO HAVE ATTACHMENT ON TOP AND BOTTOM

SUPPLEMENTAL FRAMING LIKELY REQUIRED TO SUPPORT HIGH DENSITY FILING SYSTEMS UPON COMPLETION OF ANALYSIS.

ISSUED FOR PERMIT
NOT RELEASED FOR FINAL PRICING
9/24/07

O'DONNELL & NACCARATO, INC.
STRUCTURAL ENGINEERS
11 SOUTH INDEPENDENCE MALL EAST
SUITE 950
PHILADELPHIA, PENNSYLVANIA 19106-2524
TELEPHONE: (215) 925-3788
FAX: (215) 627-1051
94929791



LANDMARK HEALTHCARE FACILITIES, LLC

839 North Jefferson Street
Milwaukee, Wisconsin 53202
Telephone: (414) 277-0500
Facsimile: (414) 277-1055

Francis
Cauffman
Foley
Hoffmann

Francis Cauffman
Foley Hoffmann Architects Ltd.
2400 Boston St, Suite 402
Baltimore, MD 21224
410-732-3400

M/E/P ENGINEER
AKF ENGINEERS, LLP
1500 WALNUT STREET, SUITE 1400
PHILADELPHIA, PA 19102
P 215-282-2154
F 215-735-6706

Revisions

Sheet

Project
Landmark Healthcare
Facilities LLC

Fore River Medical
Pavillon
Portland, Maine

Date
September 24, 2007

Project No.
07-5198

Sheet No.

SECTIONS, DETAILS,
& SCHEDULES

S2.1