

**LANDMARK  
HEALTHCARE  
FACILITIES, LLC**

839 North Jefferson Street  
Milwaukee, Wisconsin 53202  
Telephone: (414) 277-0500  
Facsimile: (414) 277-1055

**Francis  
Cauffman  
Foley  
Hoffmann**

Francis Cauffman 2400 Boston St, Suite 402  
Foley Hoffmann Baltimore, MD 21224  
Architects Ltd. 410-732-3400

M/E/P ENGINEER  
AKF ENGINEERS, LLP  
1500 WALNUT STREET, SUITE 1400  
PHILADELPHIA, PA 19102  
P 215-282-2154  
F 215-735-6708

Revisions

Sheet

Project  
Landmark Healthcare  
Facilities LLC

Fore River Medical  
Pavilion  
Portland, Maine

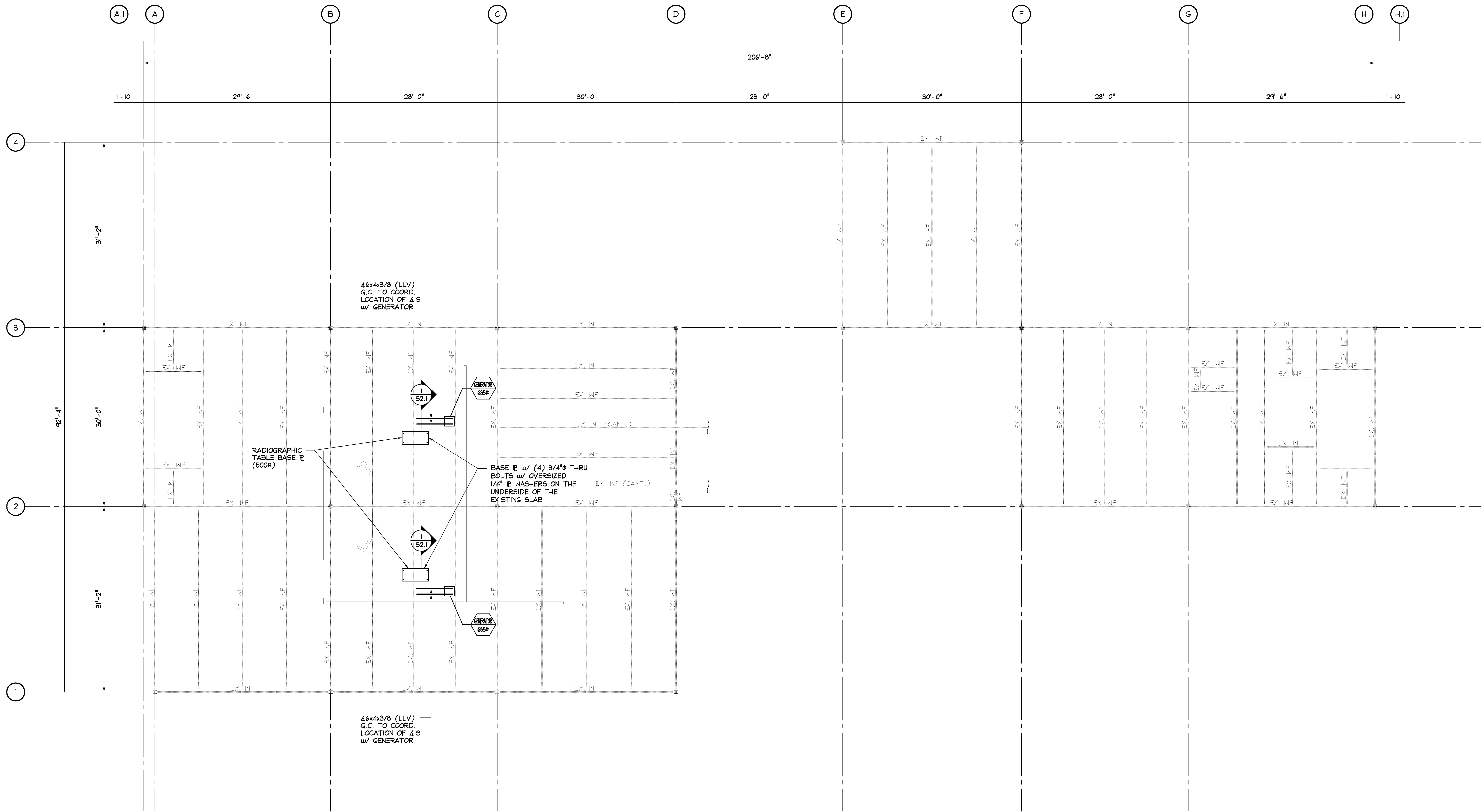
Date  
September 24, 2007

Project No.  
**07-5198**

Sheet No.

SECOND FLOOR PARTIAL  
FRAMING PLAN

**S1.1**



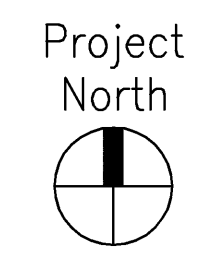
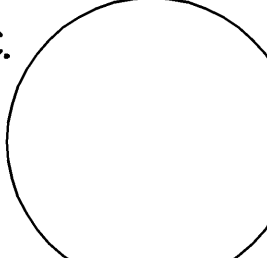
**PARTIAL SECOND FLOOR FRAMING PLAN**  
SCALE: 1/8"=1'-0"

- NOTES:  
1. COORDINATE EQUIPMENT MOUNTING REQUIREMENT w/ MANUFACTURER.  
2. VERIFY EXACT LOCATION OF EQUIPMENT w/ ARCH/EQUIP. MANUFACTURER.  
3. OUR DOCUMENTS FOR SUPPORT OF RADIOGRAPHIC TABLE AND CEILING TUBE CARRIAGE WERE DEVELOPED UTILIZING SOURCE ONE DRAWINGS, DATED 8/22/07.

SUPPLEMENTAL FRAMING LIKELY REQUIRED TO SUPPORT HIGH DENSITY FILING SYSTEMS UPON COMPLETION OF ANALYSIS.

ISSUED FOR PERMIT  
NOT RELEASED FOR FINAL PRICING  
9/24/07

**ODONNELL & NACCARATO, INC.**  
STRUCTURAL ENGINEERS  
111 SOUTH INDEPENDENCE MALL EAST  
SUITE 950  
PHILADELPHIA, PENNSYLVANIA 19106-2524  
TELEPHONE: (215) 925-3788  
FAX: (215) 627-1051  
349-27994



U:\302098\Drawings\07-5198\07-5198-11.dwg 09/24/07 11:33 Scale: 1/8" = 1'-00" Plotted By: rthomas