

Francis
Cauffman
Foley
Hoffmann

Francis Cauffman Architects Ltd.
2400 Boston St., Suite 402
Baltimore, MD 21224
410-732-3400

M/E/P ENGINEER
A/E/C ENGINEERS, L.P.
503 MANHATTAN SQUARE, SUITE 1400
PORTLAND, MAINE 04102
P 215-282-2154
F 215-735-8708

Revisions

▲ Addendum # 1.092407

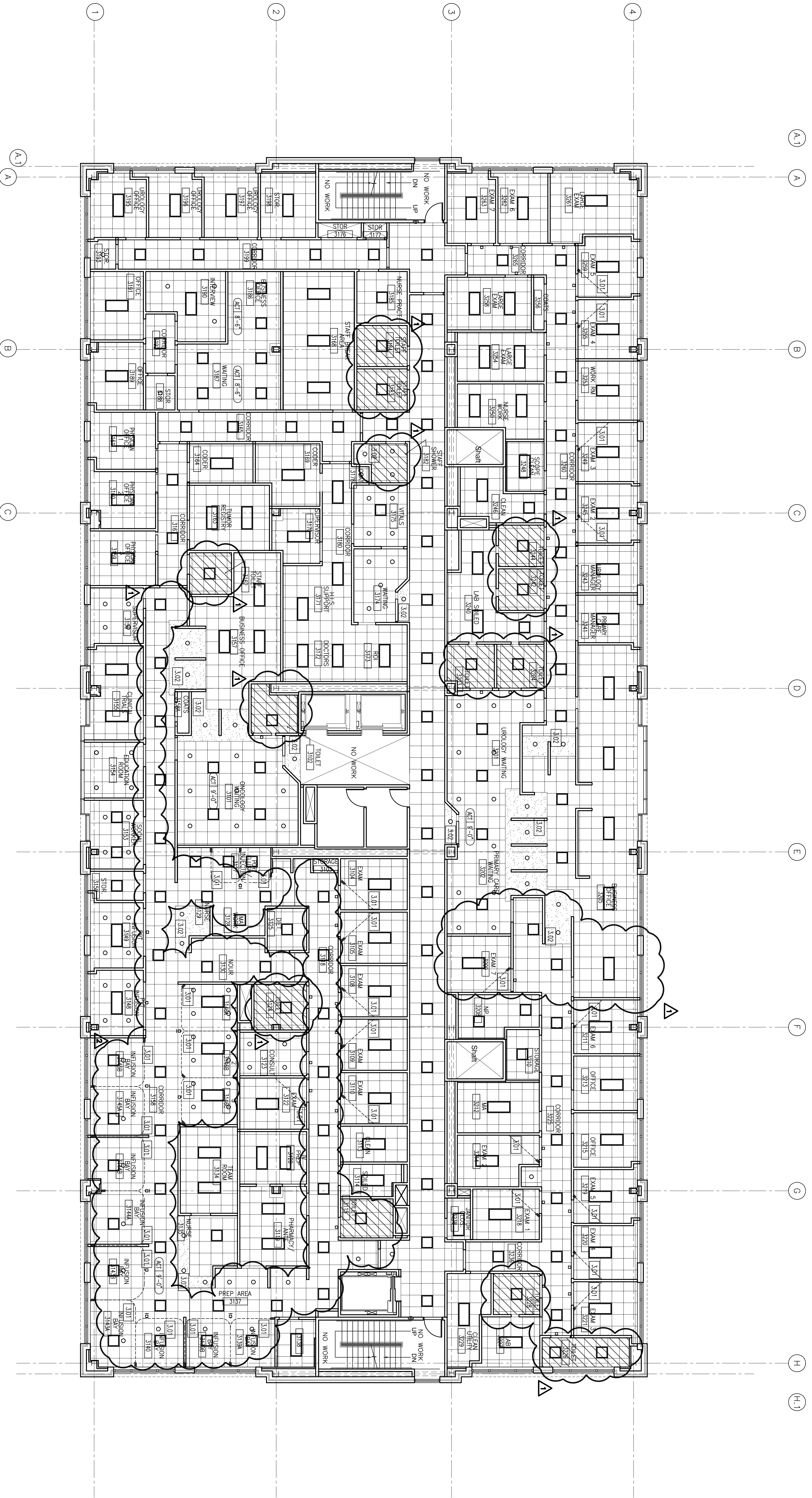
Sheet
Third
Floor Reflected
Ceiling Plan

Project
Landmark Healthcare
Facilities LLC
Fore River Medical
Pavilion
Portland, Maine

Date
August 23, 2007

Project No.
07-5198

Sheet No.
A9.2



1 THIRD FLOOR REFLECTED CEILING PLAN
SCALE 1/8" = 1'-0"

LEGEND

ROOM NAME / NUMBER
KEY NOTE SYMBOL - SEE KEY
KEY LEGEND FOR DETAILS
REVISION REFERENCE MARK
CEILING MATERIAL
OTS - OPEN TO STRUCTURE
ACOUSTICAL TILE CEILING
SUSPENDED OPSAM BOARD
CEILING OR SPRTT

2'-4" FLUORESCENT LIGHT WITH PRISMATIC ASPRUC LENS
2'-2" FLUORESCENT LIGHT WITH PRISMATIC ASPRUC LENS
1'-4" FLUORESCENT LIGHT WITH PRISMATIC ASPRUC LENS
NONCONDENSING CAN LIGHT
EXIT LIGHTS - ORECONICAL ARROW ONLY WHERE INDICATED RECURRENT MOUNTED

4'-0" SLOT DIFFUSER
7'-0" SLOT DIFFUSER
PROMA RETURN / TRANSFER DUCT EXHAUST GRILLE
EXHAUST DIFFUSER
SPRINKLER HEAD
NURSE CALL LANTERN
2-WAY NURSE CALL LANTERN
NO WINDOW OPENED OVER WALL BY 8" MINIMUM OVERLAP ALUMINUM WINDOW FIELD

KEY NOTE LEGEND

1.001 CURTAIN CEILING TRUCK CURTAIN SHALL BE PROVIDED BY TENANT SEE DETAIL S/A10.3
1.002 7'-2" OPSAM BOARD SPRTT - SEE DETAIL DETAIL 7/A10.3
1.003 7'-0" OPSAM BOARD HEADER
1.004 7'-0" OPSAM BOARD CASD OPSAM

GENERAL NOTES

1. CEILING FITS TO BE 8'-0" UNLESS NOTED OTHERWISE

