

**LANDMARK  
HEALTHCARE  
FACILITIES, LLC**  
839 North Jefferson Street  
Milwaukee, Wisconsin 53202  
Telephone: (414) 277-0500  
Facsimile: (414) 277-1055

**Francis**  
**Cautfman**  
**Foley**  
**Hoffmann**

Francis Cautfman  
Foley Hoffmann  
Architects Ltd.  
2400 Boston St., Suite 402  
Baltimore, MD 21224  
410-521-3400

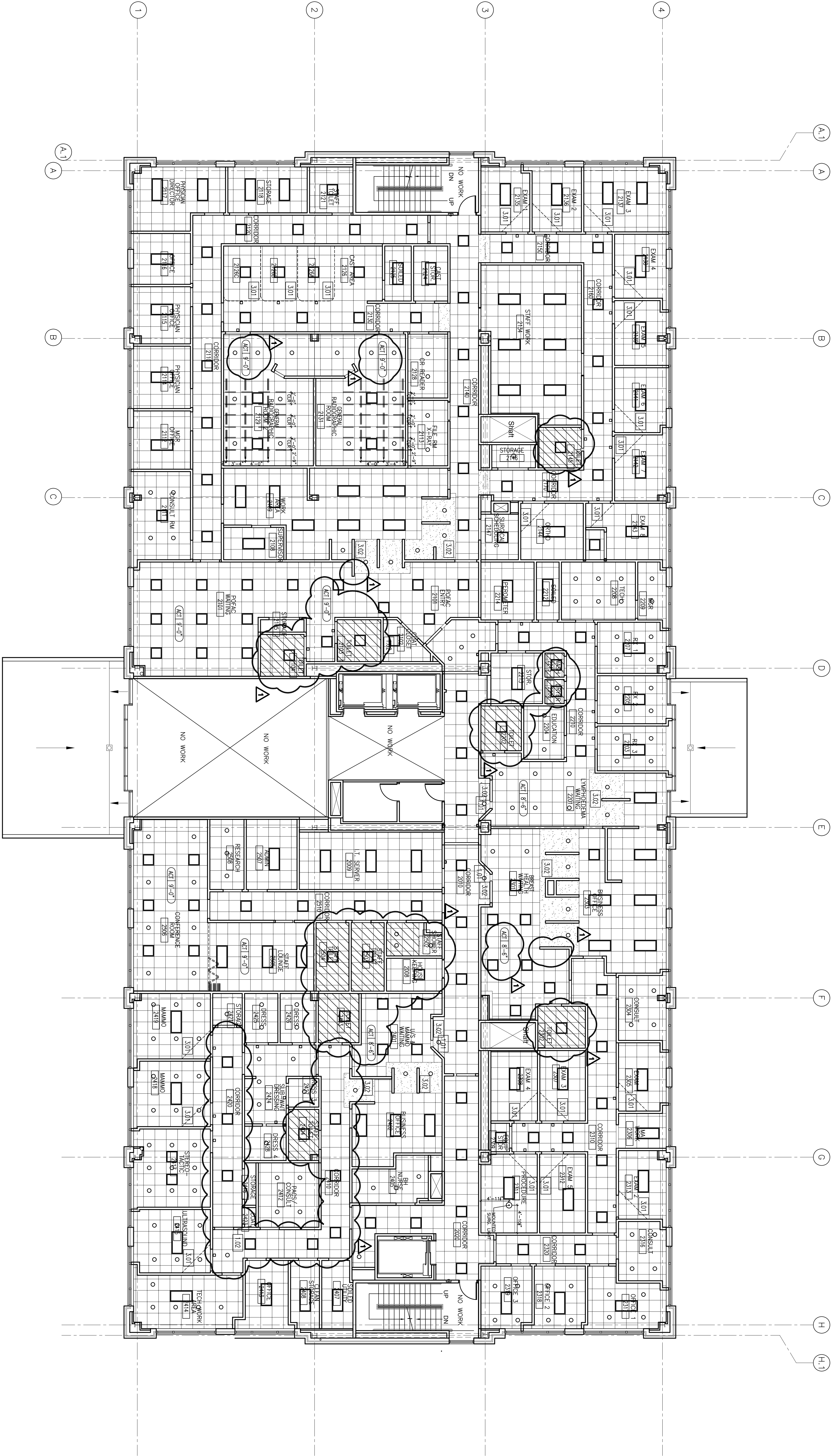
M/E/P ENGINEER  
A/E ENGINEERS, LLP  
SUITE 1400  
PHILADELPHIA, PA 19102  
P 215-382-2154  
F 215-382-0700

Revisions  
Addendum # 1\_092407

Sheet  
Second  
Floor Reflected  
Ceiling Plan

Project  
Landmark Healthcare  
Facilities LLC  
Fore River Medical  
Pavilion  
Portland, Maine

Date  
August 23, 2007  
Project No.  
07-5198  
Sheet No.  
A9.1



1 SECOND FLOOR REFLECTED CEILING PLAN  
Scale: 1/8" = 1'-0"

**LEGEND**

ROOM NAME / NUMBER  
KEY NOTE SYMBOL - SEE KEY NOTE LEGEND FOR DETAILS  
REGION REFERENCE MARK  
CEILING MATERIAL  
CEILING HEIGHT REF  
OPEN TO STRUCTURE  
SUSPENDED Gypsum BOARD CEILING OR SPLIT

2' x 4' FLUORESCENT LIGHT WITH PRESATIC ASPETIC LENS  
2' x 2' FLUORESCENT LIGHT WITH PRESATIC ASPETIC LENS  
1' x 4' FLUORESCENT LIGHT WITH PRESATIC ASPETIC LENS  
NONINCANDESCENT CAN LIGHT  
EXIT LIGHTS - BIPOLAR/NAKAWALL PANEL WITH INCANDESCENT PRISM MOUNTED

4'-0" SLOT DIFFUSER  
2'-0" SLOT DIFFUSER  
PLenum RETURN / TRANSFER DUCT EXHAUST GRILLE  
EXHAUST DIFFUSER  
SPRINKLER HEAD  
NURSE CALL LANTERN  
AIR WITH NO UNFACED BATT OVERLAP WALL BY 8" MINIMUM WINDOW HEAD

**KEY NOTE LEGEND**

1.01 CURB CUT CROWN RACK  
CURB CUT SHALL BE PROVIDED BY TENANT  
SEE DETAIL 9/4/03  
1.02 7'-2" Gypsum BOARD SOFFIT - SEE DETAIL 9/4/03  
1.03 7'-0" Gypsum BOARD HEADER  
1.04 7'-0" Gypsum BOARD CASO OSNING

**GENERAL NOTES**

1. CEILING HTS TO BE 8'-0" UNLESS NOTED OTHERWISE.

