

Francis

Cauffman

Foley

Hoffmann

2400 Boston St, Suite 402  
Philadelphia, PA 19124  
410-332-3400

M/E/P ENGINEER  
1500 WALNUT STREET, SUITE 1400  
PHILADELPHIA, PA 19102  
F 215-735-6708

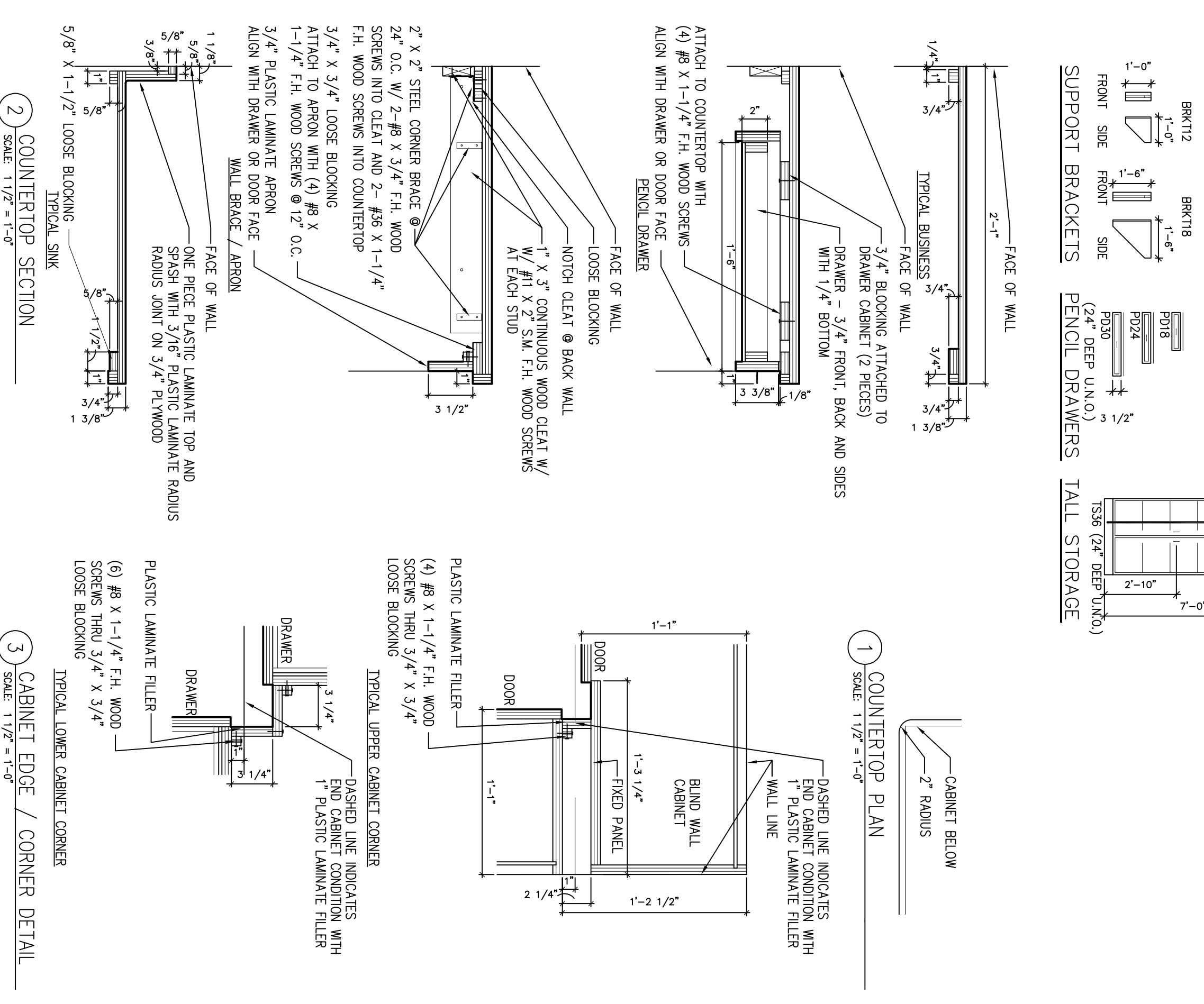
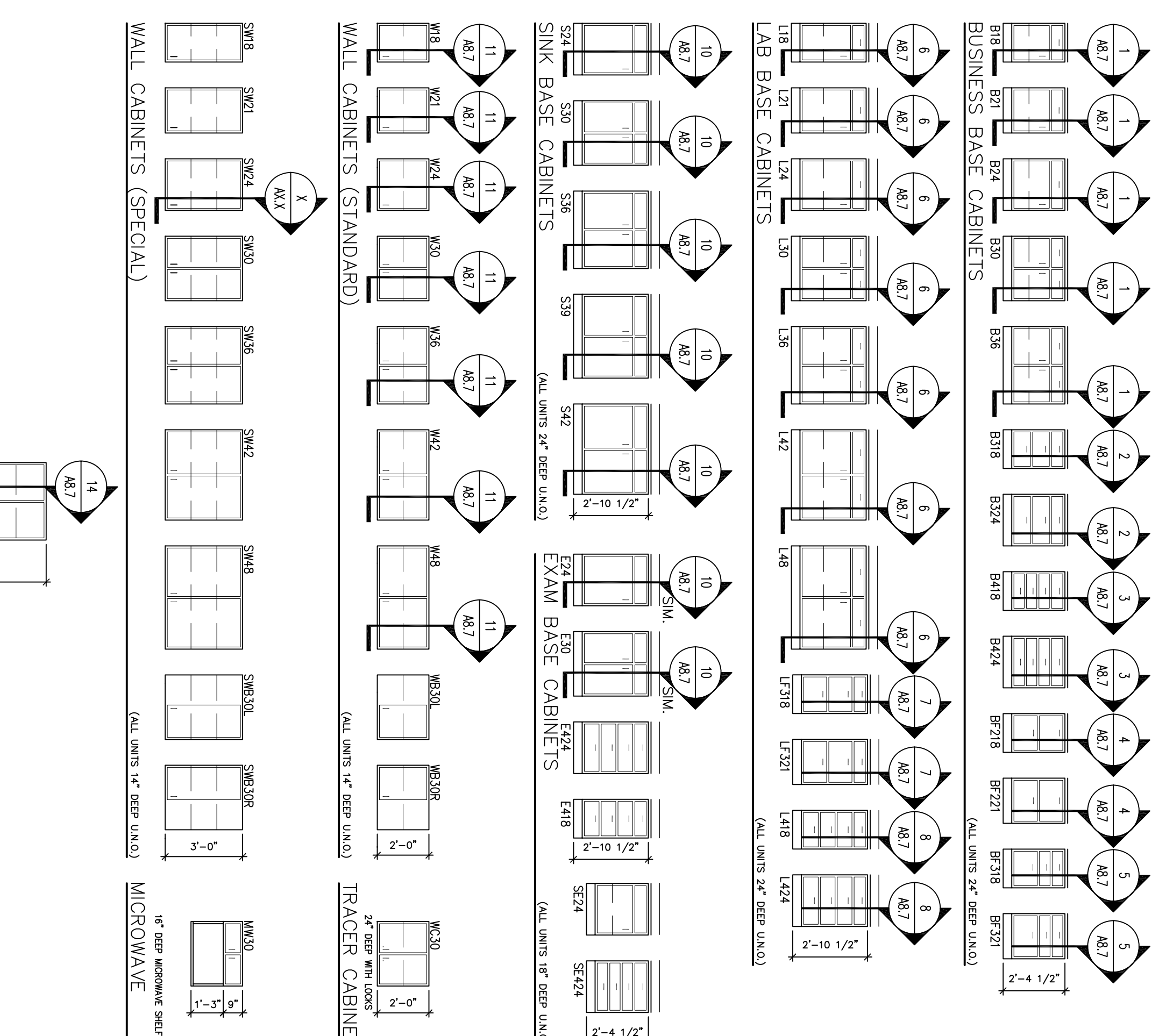
Revisions

Sheet  
Standard  
Casework  
Elevations,  
Sections &  
Details

Project  
Landmark Healthcare  
Facilities LLC  
Fore River Medical  
Pavilion  
Portland, Maine

Date  
August 23, 2007  
Project No.  
07-5198  
Sheet No.  
A8.7

LAB BASE CABINETS	
B324-	BUSINESS DRAWER BASE CABINET
B324B	W/ 1" INCHES
B324C	BUSINESS FILE DRAWER BASE CABINET
B324D	W/ 1" INCHES
L324-	LAB DRAWER BASE CABINET
L324A	W/ 1" INCHES
L324B	LAB FILE DRAWER BASE CABINET
L324C	W/ 1" INCHES
S324-	SINK BASE CABINET
S324A	W/ 1" INCHES
E324-	EXAM BASE CABINET
E324A	W/ 1" INCHES
E324B	EXAM BASE CABINET
E324C	W/ 1" INCHES
SE324-	SPECIAL EXAM BASE CABINET
SE324A	W/ 1" INCHES
SE324B	SPECIAL EXAM BASE CABINET
SE324C	W/ 1" INCHES
W324-	WALL CABINET
W324A	W/ 1" INCHES
W324B	SPECIAL WALL CABINET
W324C	W/ 1" INCHES
TS34-	TALL STORAGE CABINET
TS34A	W/ 1" INCHES
WB300-	LEFT HAND CORNER WALL CABINET
WB300B	RIGHT HAND CORNER WALL CABINET
WC30-	TRACER COMPUTER WALL CABINET
WC30A	MICROWAVE WALL CABINET



**GENERAL NOTES**

1. ALL CABINET AND COUNTERTOP MATERIAL IS 3/4" THICK UNLESS NOTED OTHERWISE.
2. THE BOTTOM OF ALL DRAWERS COMPONENTS ARE 3/4" THICK UNLESS NOTED OTHERWISE.
3. WALL AND BASE CABINET CORNERS ARE TO BE RADIUSED.
4. CORNERS ARE TO BE RADIUSED.

