

Francis
Caufman
Foley
Hoffmann

Francis Cauffman
Architects Ltd.
2400 Barton St., Suite 402
410-732-3400 424

M/E/P ENGINEER
1500 WALNUT STREET, SUITE 1400
PHILADELPHIA, PA 19102
F 215-752-6786

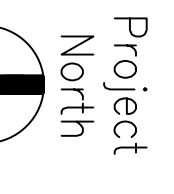
Revisions
Addendum # 1.092407

Sheet
Third
Floor Plan -
Architectural

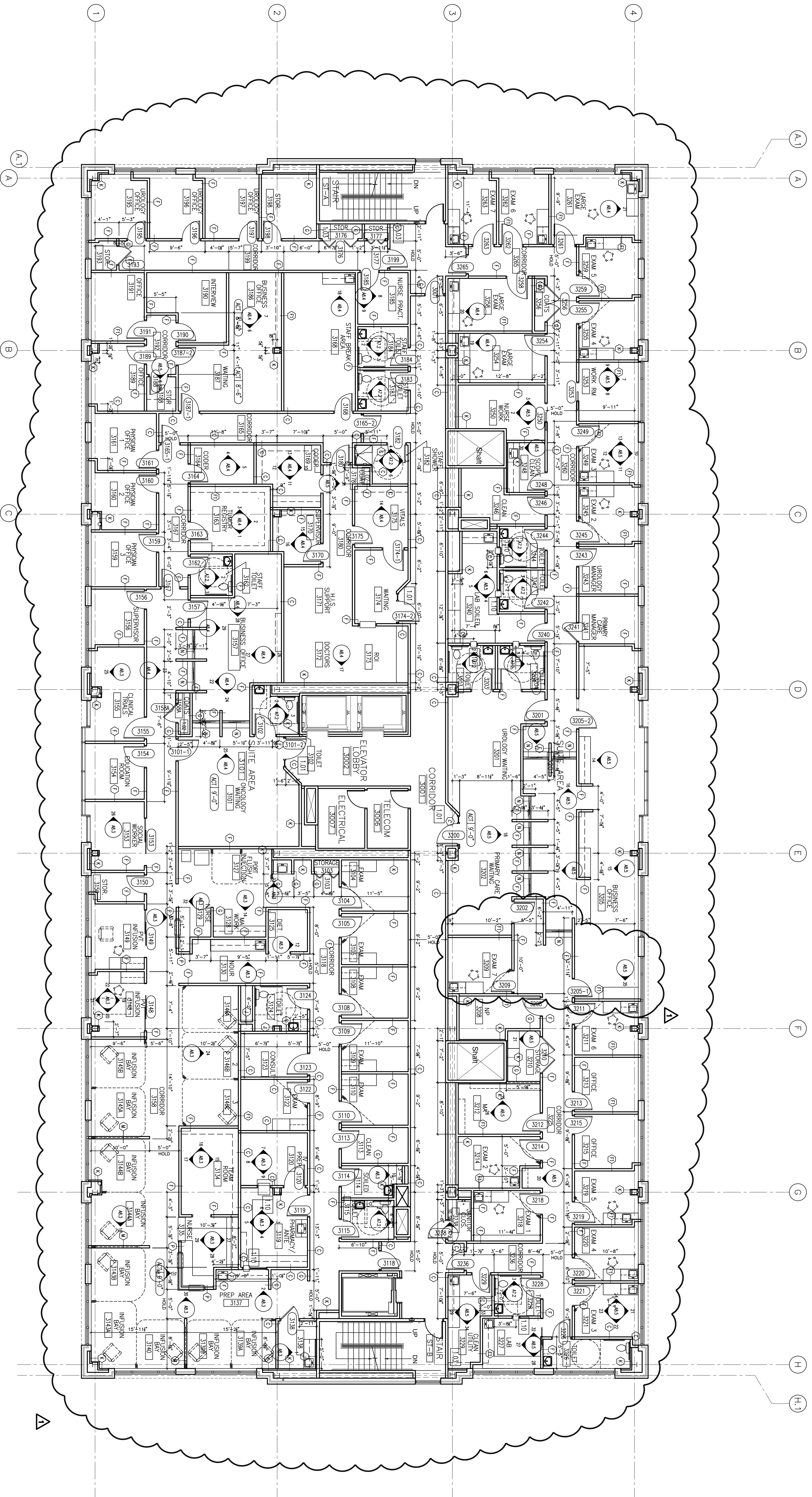
Project
Landmark Healthcare
Facilities LLC
Fore River Medical
Pavilion
Portland, Maine

Date
August 23, 2007

Project No.
07-5198



Sheet No.
A6.3



1 THIRD FLOOR ARCHITECTURAL PLAN

LEGEND

	ROOM NAME / NUMBER
	SIGNAL AND CORE WORK TO BE ENCLOSED
	KEY NOTE SYMBOL - SEE KEY NOTE LEGEND FOR DETAILS
	REVISION REFERENCE MARK
	DOOR REFERENCE MARK
	PARTITION REFERENCE MARK
	ELEVATION DETAIL SYMBOL
	SHEET NUMBER
	SECTION DETAIL SYMBOL
	DETAIL NUMBER

KEY NOTE LEGEND

1.01	SMALL ENTRY FLOODE - SEE DETAIL 15/A10.3
1.02	COAT RACK - SEE DETAIL 14/A40.3
1.03	ANTI-STATIC EXAMINE SHELVES TO ADJACENT WALL
1.04	ALUM SURFACE WITH ADJACENT SURFACE
1.05	GROUNDHOLE IN COUNTERTOP
1.06	TELEPHONE BACKBOARD
1.07	GRIPSA BOARD FINISH ON SHELL AND CORE
1.08	METAL STUDS PROVIDED BY OTHERS
1.09	FIRE EXTINGUISHER AND BRACKET
1.10	SPECIALLY PASS-THRU

GENERAL NOTES

1. PROVIDE INSULATION AND GRIPSA BOARD FINISH ON THE METAL STUDS PROVIDED IN THE SHELL AND CORE WORK - FIELD VERIFY AND CLARIFY ALL CONDITIONS PRIOR TO BIDDER.
2. USE WATER RESISTANT GRIPSA BOARD IN TOILET ROOMS AND OTHER SMALL ROOMS.
3. ALL CHANGES TO THE SHELL AND CORE WORK DONE BY CONTRACTOR SHALL BE INCLUDED IN THE COST FOR TENANT WORK.
4. DIMENSIONS ARE FACE TO FACE (NOMINAL) UNLESS OTHERWISE NOTED OTHERWISE.
5. PROVIDE WINDOW BLINDS IN ALL TENANT SUITE UNLESS OTHERWISE NOTED OTHERWISE.
6. RAO ROOMS WILL REQUIRE LEAD-LINED WALLS. SEE ATTACHED REPORT.

GENERAL NOTES

1. ALL VERTICAL CASSETS (FALL OUTLETS AND ASSOCIATED PIPING) IF APPLICABLE.
2. ALL SECURITY SYSTEMS (INCLUDING CARD READER SYSTEMS) AND ASSOCIATED WIRING, IF APPLICABLE.
3. ALL EMPLOYEE THE CLOSETS AND ASSOCIATED WIRING, IF APPLICABLE.
4. ALL NURSE CALL SYSTEMS AND ASSOCIATED WIRING, IF APPLICABLE.
5. GENERAL CONTRACTOR RESPONSIBLE FOR GRIPSA BOARD FINISH OVER METAL STUD FINISHING AT ALL EXTERIOR AND CORRIDOR AREAS ON THE FLOOR. PROVIDE AND MAINTAIN ACCESS AS REQUIRED. FIELD VERIFY ALL CONDITIONS PRIOR TO BIDDING.