

Francis
Cautfman
Foley
Hoffmann
Francis Cautfman
Foley Hoffmann
Architects Ltd.
2400 Boston St., Suite 402
Baltimore, MD 21224
410-521-5400

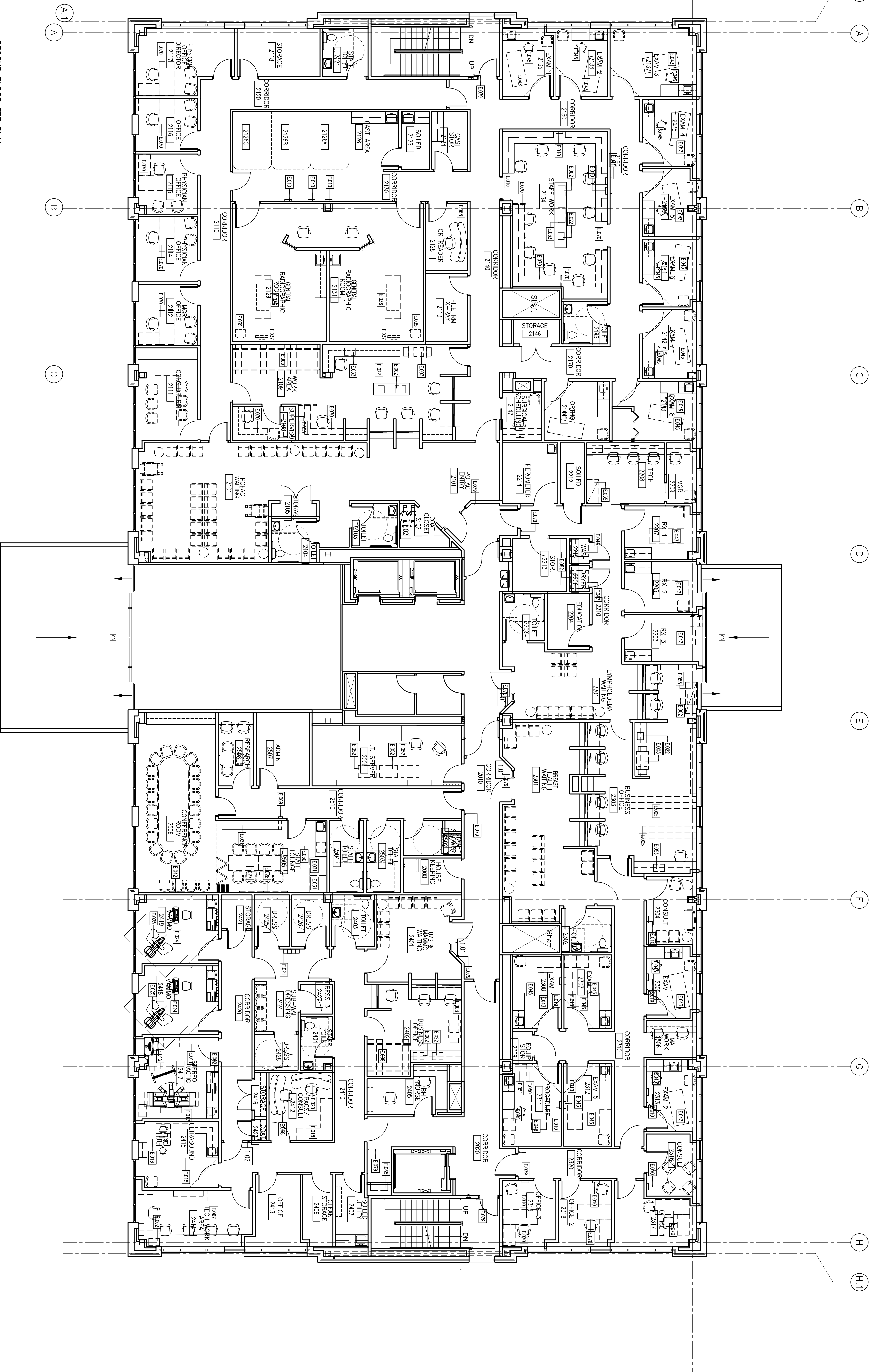
M/E/P ENGINEER
A/E ENGINEERS, LLP
SUITE 1400
PHILADELPHIA, PA 19102
P 215-582-2154
F 215-535-0700

Revisions

Sheet
Second
Floor Plan -
Furnishing and
Equipment

Project
Landmark Healthcare
Facilities LLC
Fore River Medical
Pavilion
Portland, Maine

Date
August 23, 2007
Project No.
07-5198
Sheet No.
A6.2



1 SECOND FLOOR FEE PLAN
Scale: 1/8" = 1'-0"

LEGEND

○	DIMMER RECEPTACLE MOUNTED 18" AFF	—○—	SINGLE POLE SWITCH
○	DIMMER RECEPTACLE MOUNTED 36" AFF	—○—	DIMMER SWITCH
○	QUINCESS RECEPTACLE MOUNTED 18" AFF	—○—	THREE WAY SINGLE POLE SWITCH
○	QUINCESS RECEPTACLE MOUNTED ABOVE COUNTER	—○—	OVERBID SWITCH - AFTER HOURS
○	SPECIAL OUTLET REFER TO ELECTRICAL DRAWINGS	—○—	VAV THERMOSTAT
○	TELEPHONE / COMPUTER JUNCTION BOX MOUNTED 18" AFF	—○—	EQUIPMENT KEY NOTE SYMBOL - SEE SHEET A1.3 FOR EQUIPMENT SCHEDULE
○	TELEPHONE / COMPUTER JUNCTION BOX MOUNTED ABOVE COUNTER	—○—	

- GENERAL NOTES**
1. THE FOLLOWING WORK INCLUDING SYSTEMS, RECESS AND FINISH, IS NOT INCLUDED IN THE CONTRACT BUT MAY BE PROVIDED BY OTHERS:
 - A. TELEPHONE AND COMPUTER SYSTEMS
 - B. SECURITY AND TIME CLOCK SYSTEMS
 - C. PLUMBING TUBE SYSTEMS
 - D. SECURITY AND TIME CLOCK SYSTEMS
 - E. TOILET PAPER, TOWELS, SOAP DISPENSERS
 - F. CHART HOLDERS AND MAGAZINE RACKS
 2. JUNCTION BOX AND CONDUIT TO AN ACCESSIBLE CEILING SHALL BE PROVIDED FOR TELEPHONE / COMPUTER SYSTEMS
 3. JUNCTION BOX AND CONDUIT TO AN ACCESSIBLE CEILING MAY BE PROVIDED FOR SECURITY, NURSE CALL, NURSE ROTATIONAL AND OTHER SYSTEMS REQUESTED BY THE TENANT

- FURNITURE AND EQUIPMENT GENERAL NOTES**
1. FURNITURE AND EQUIPMENT SHOWN WITHIN THE FLOOR PLANS ARE SUGGESTED LAYOUTS FOR INFORMATIONAL PURPOSES ONLY.
 2. ALL FURNITURE AND EQUIPMENT ARE TO BE PROVIDED BY THE TENANT AND NOT INCLUDED WITHIN THE COST OF THE PROJECT.
 3. RECEPTACLE LOCATIONS FOR POWER, VOICE AND DATA ARE BASED UPON STANDARDS
 4. QUANTITY, LOCATIONS AND REQUIREMENTS OF FURNITURE EQUIPMENT AND RECEPTACLES MAY VARY FROM WHAT IS SHOWN.
 5. FINAL COMPOSITION OF THESE REQUIREMENTS IS THE RESPONSIBILITY OF THE TENANT AND THE OWNER.

- MECHANICAL NOTES**
1. RECEPTACLE SHALL BE ZONED THROUGH RECESS AND SHALL BE CONDITIONED WITH ELECTRIC RECESS COILS IN FAN POWERED VAV TERMINAL UNITS AND CONTROLLED WITH ONE THERMOSTAT
 2. INTERIOR ROOMS WILL BE ZONED TOGETHER AND SHALL BE CONDITIONED WITH SHUT-OFF CONTROLLED WITH ONE THERMOSTAT
 3. RETURN AIR SHALL BE THROUGH A RETURN AIR GRILLE WITH SHUT-OFF
 4. ROOFTOP MOUNTED CENTRAL EXHAUST SHALL BE PROVIDED FOR TOILET ROOMS

