

**LANDMARK  
HEALTHCARE  
FACILITIES, LLC**  
839 North Jefferson Street  
Milwaukee, Wisconsin 53202  
Telephone: (414) 277-0500  
Facsimile: (414) 277-1055

**Francis**  
**Cauffman**  
**Foley**  
**Hoffmann**  
Francis Cauffman  
Foley Hoffmann  
Architects Ltd.  
2400 Boston St., Suite 402  
Baltimore, MD 21224  
410-521-5400

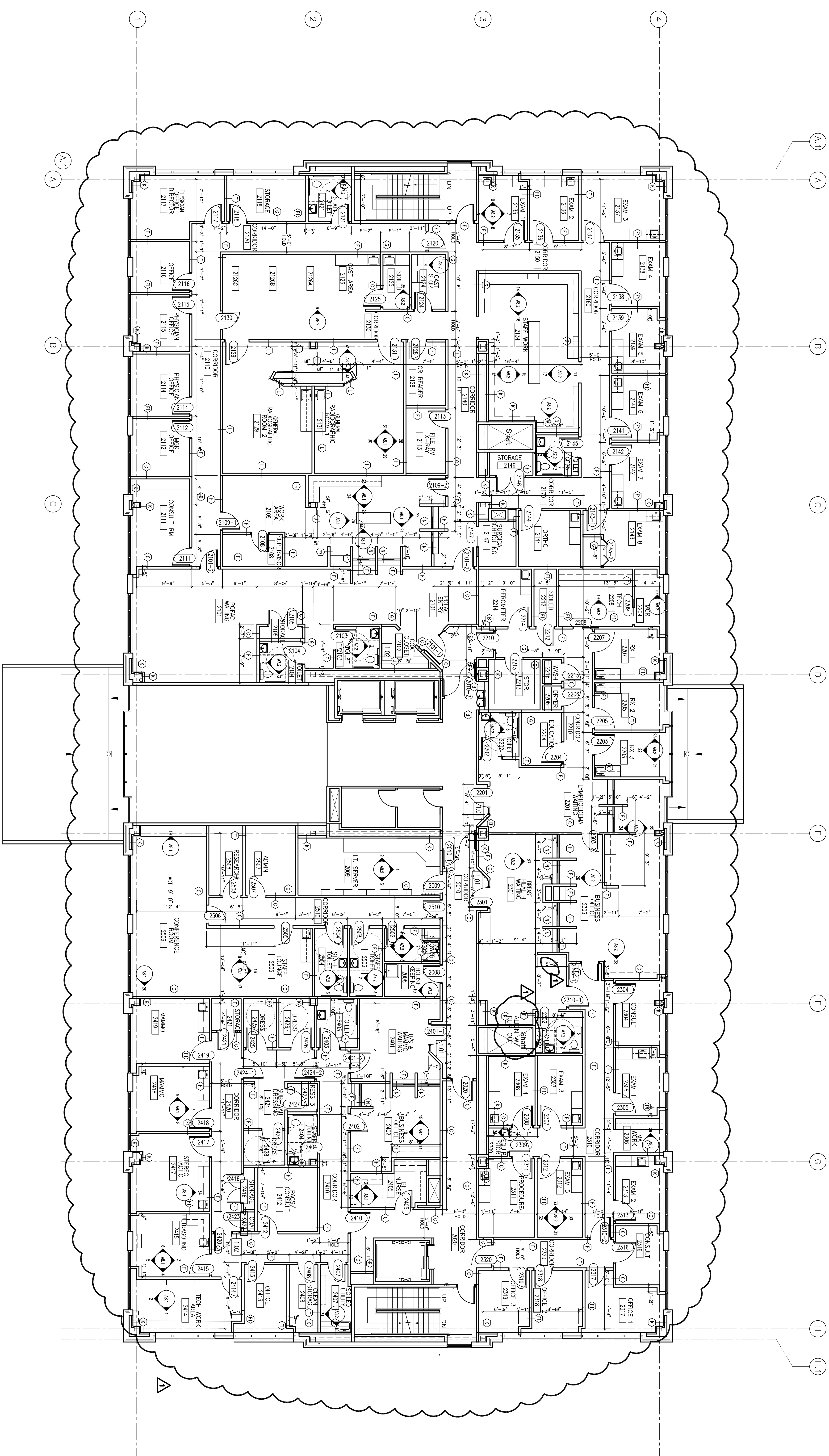
M/E/P ENGINEER  
A/E/C ENGINEERS, LLP  
PHILADELPHIA, PA 19102  
P 215-582-2154  
F 215-582-0700

Revisions  
Addendum # 1\_092407

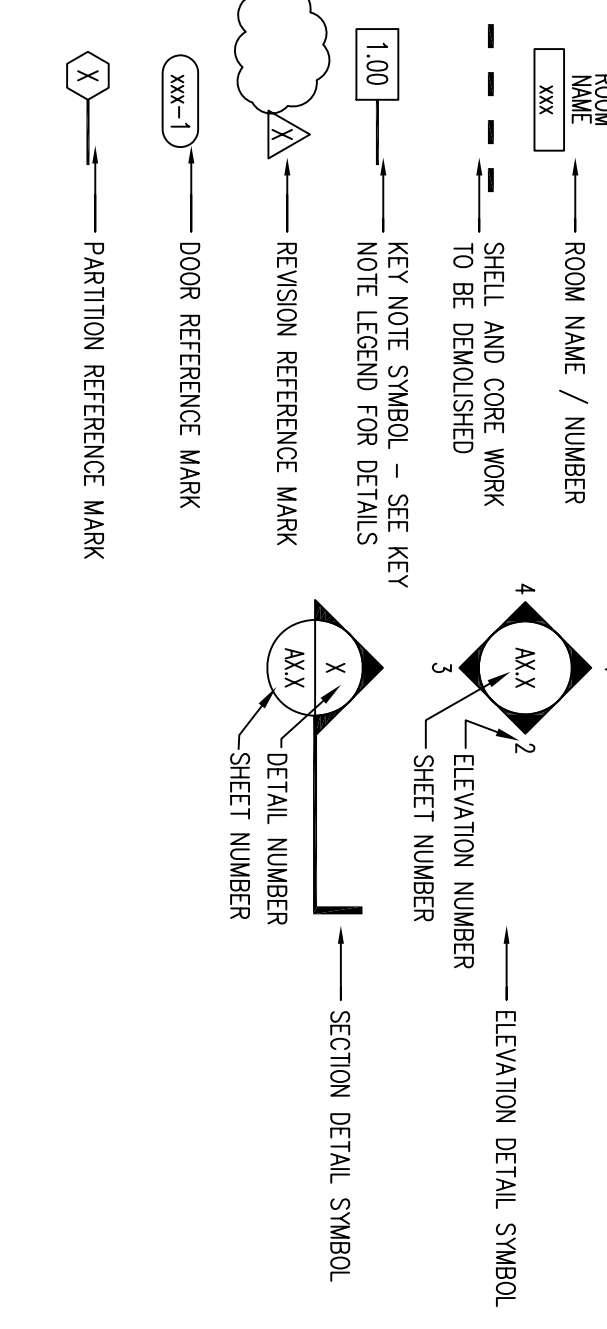
Sheet  
Second  
Floor Plan -  
Architectural

Project  
Landmark Healthcare  
Facilities LLC  
Fore River Medical  
Pavilion  
Portland, Maine

1 SECOND FLOOR ARCHITECTURAL PLAN



LEGEND



KEY NOTE LEGEND

- 1.01 SUITE ENTRY PLACE - SEE DETAIL 19/A10.3
- 1.02 DOOR RACK - SEE DETAIL 19/A10.3
- 1.03 5/16" PLASTIC LAMINATE SHELVES ON ADJUSTABLE STANDARDS
- 1.04 ALUM SURFACE WITH ADJACENT SURFACE
- 1.05 BRACKET HOLE IN COUVERTURE
- 1.06 TELEPHONE BACKBOARD
- 1.07 OPTICAL BOARD FINISH ON SHELL AND CORE
- 1.08 METAL STUDS PROVIDED BY OTHERS
- 1.09 -
- 1.10 SFGWAIN PASS-THRU

GENERAL NOTES

1. PROVIDE INSULATION AND OPTICAL BOARD FINISH ON THE METAL STUDS PROVIDED IN THE SHELL AND CORE WORK - FIELD VERIFY AND CLARIFY ALL CONDITIONS PRIOR TO BUILDING
2. USE WATER RESISTANT OPTICAL BOARD IN TOILET ROOMS AND OTHER SIMILAR ROOMS
3. ALL CHANGES TO THE SHELL AND CORE WORK DUE TO TENANT WORK SHALL BE INCLUDED IN THE COST FOR TENANT WORK
4. DIMENSIONS ARE FACE TO FACE (NOMINAL) OF FINISH MATERIAL UNLESS NOTED OTHERWISE
5. PROVIDE NUM-BANDS IN ALL TENANT SUITE WINDOWS ANCHORED TO ALUMINUM FRAME
6. RAO ROOMS WILL REQUIRE LEAD-LINED WALLS. SEE ATTACHED REPORT

GENERAL NOTES

- WORK THAT IS NOT PART OF THIS PACKAGE AND IS TO BE DONE BY OTHERS FOR THE TENANT IMPROVEMENT AREAS, IS AS FOLLOWS:
1. ALL MEDICAL GASSES (ALL OUTLETS AND ASSOCIATED PIPING) IF APPLICABLE
  2. ALL SECURITY SYSTEMS (INCLUDING CARD READER SYSTEMS) AND ASSOCIATED WIRING, IF APPLICABLE
  3. ALL EMPLOYEE TIME CLOCKS AND ASSOCIATED WIRING, IF APPLICABLE
  4. ALL NURSE CALL SYSTEMS AND ASSOCIATED WIRING, IF APPLICABLE
  5. GENERAL CONTRACTORS RESPONSIBLE FOR OPTICAL BOARD FINISH OVER METAL STUD FRAMING AT ALL EXTERIOR AND CORRIDOR WALLS AND AROUND ALL STRUCTURE AND BUILDING SYSTEMS AS REQUIRED - FIELD VERIFY ALL CONDITIONS PRIOR TO BEGINNING.

Project  
North  
07-51198  
Sheet No.  
**A6.1**

Date  
August 23, 2007