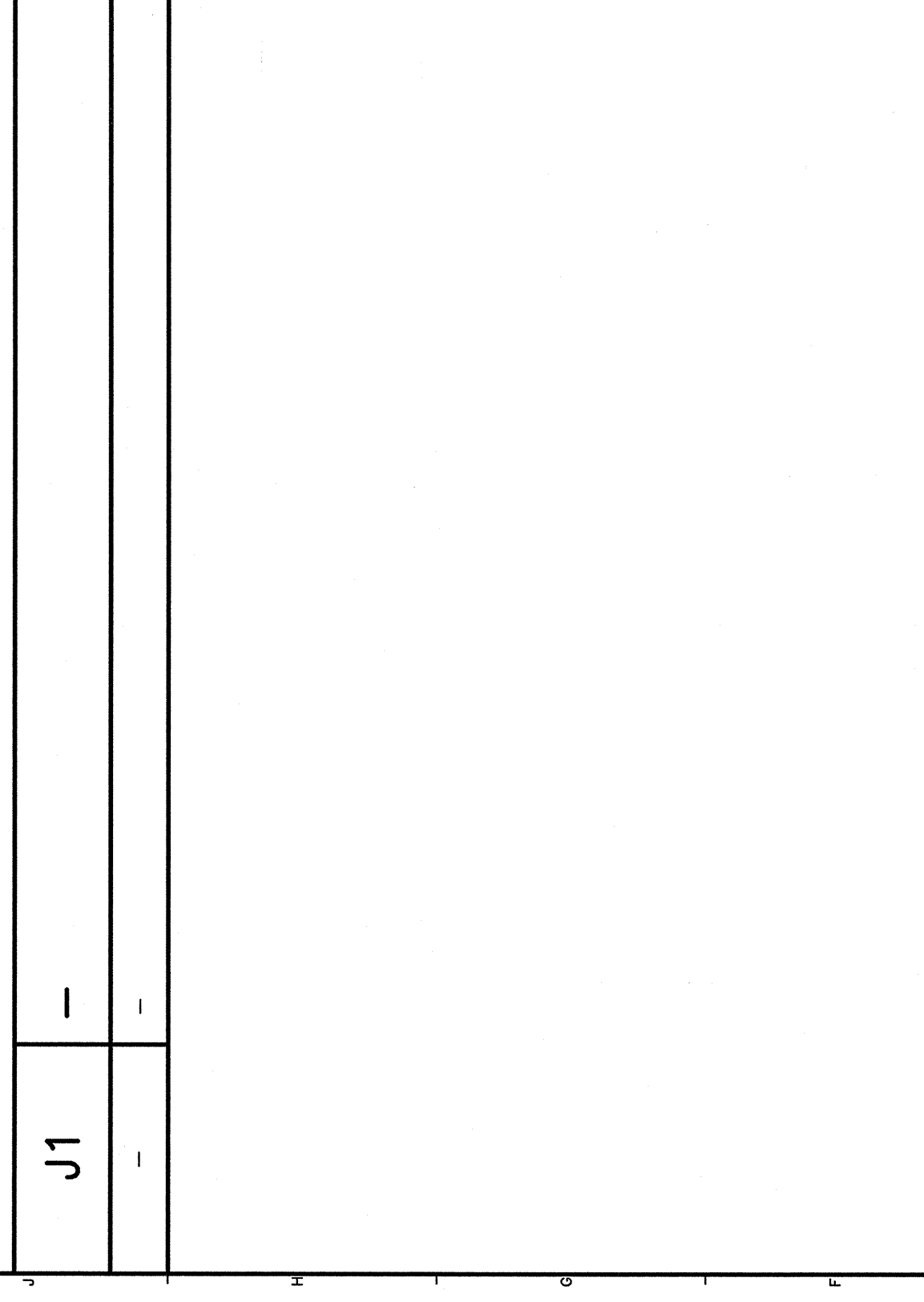
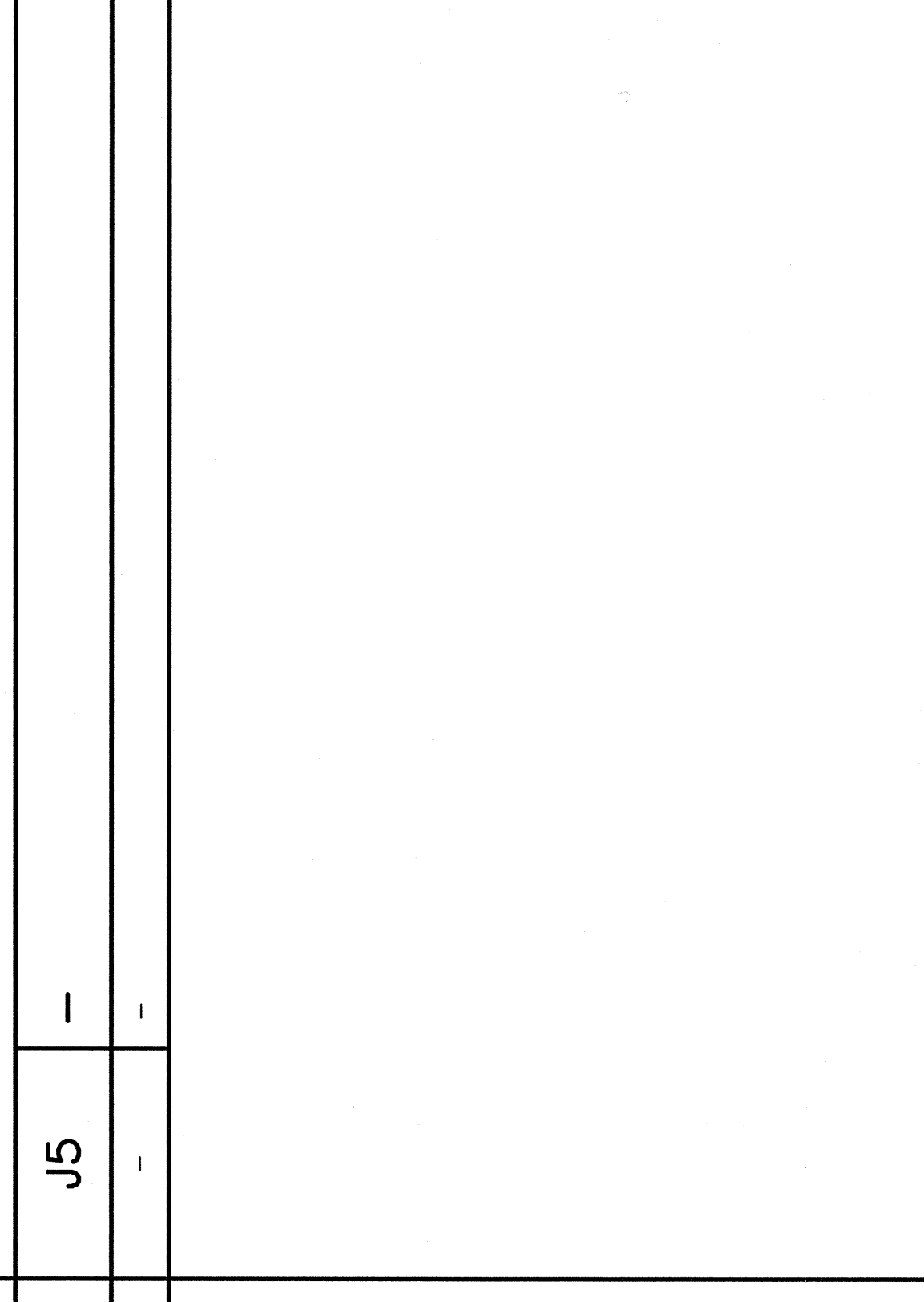
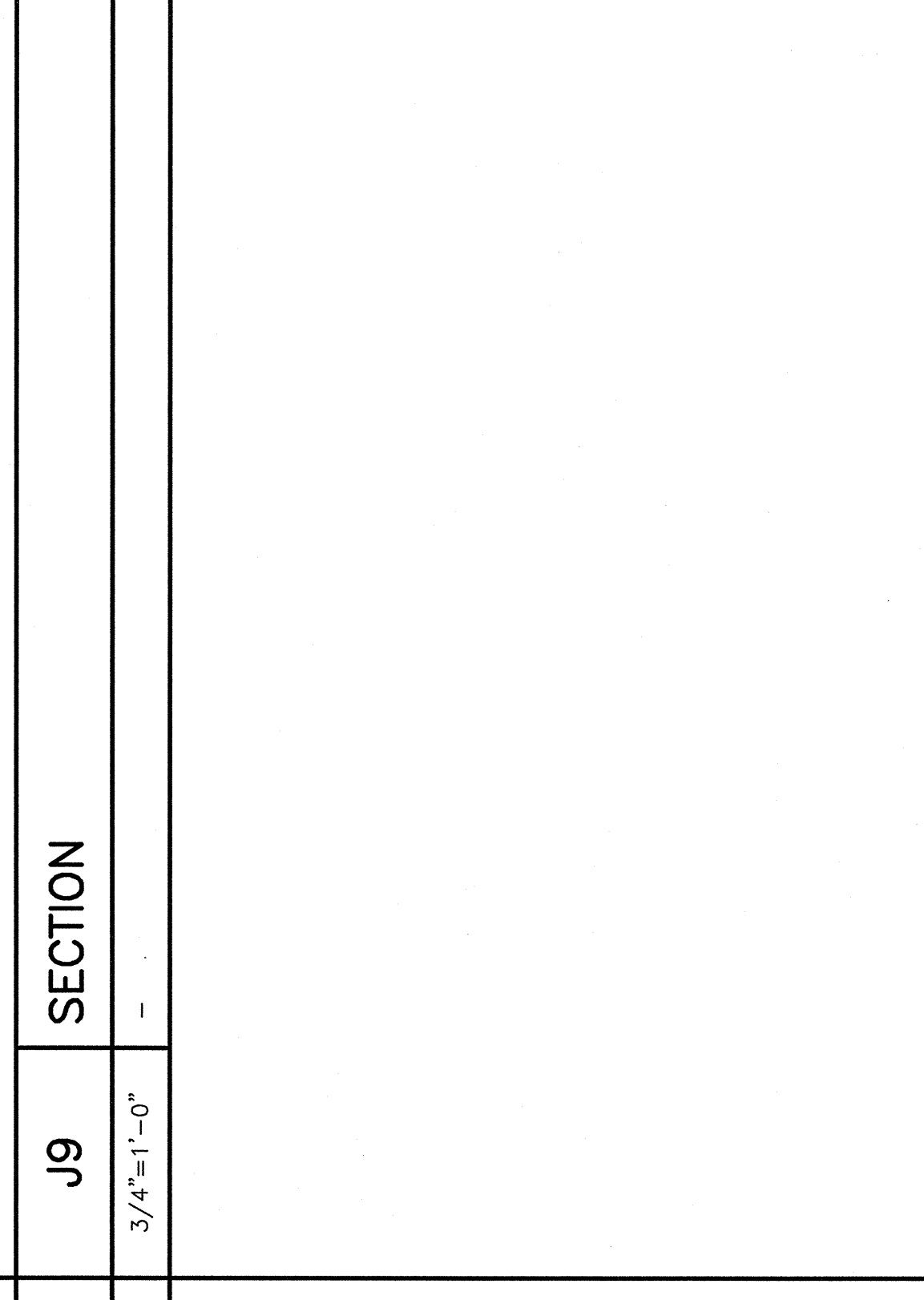
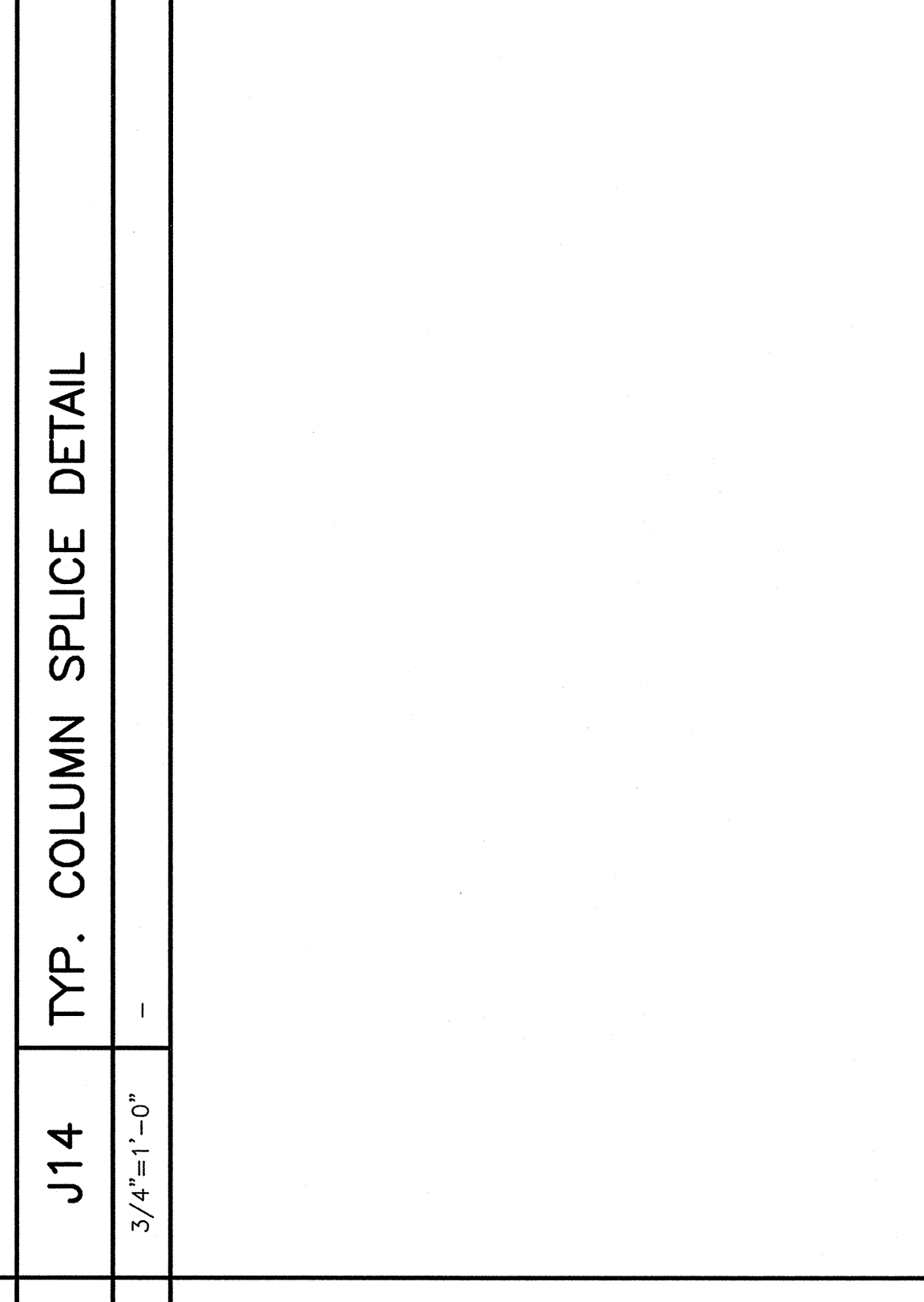
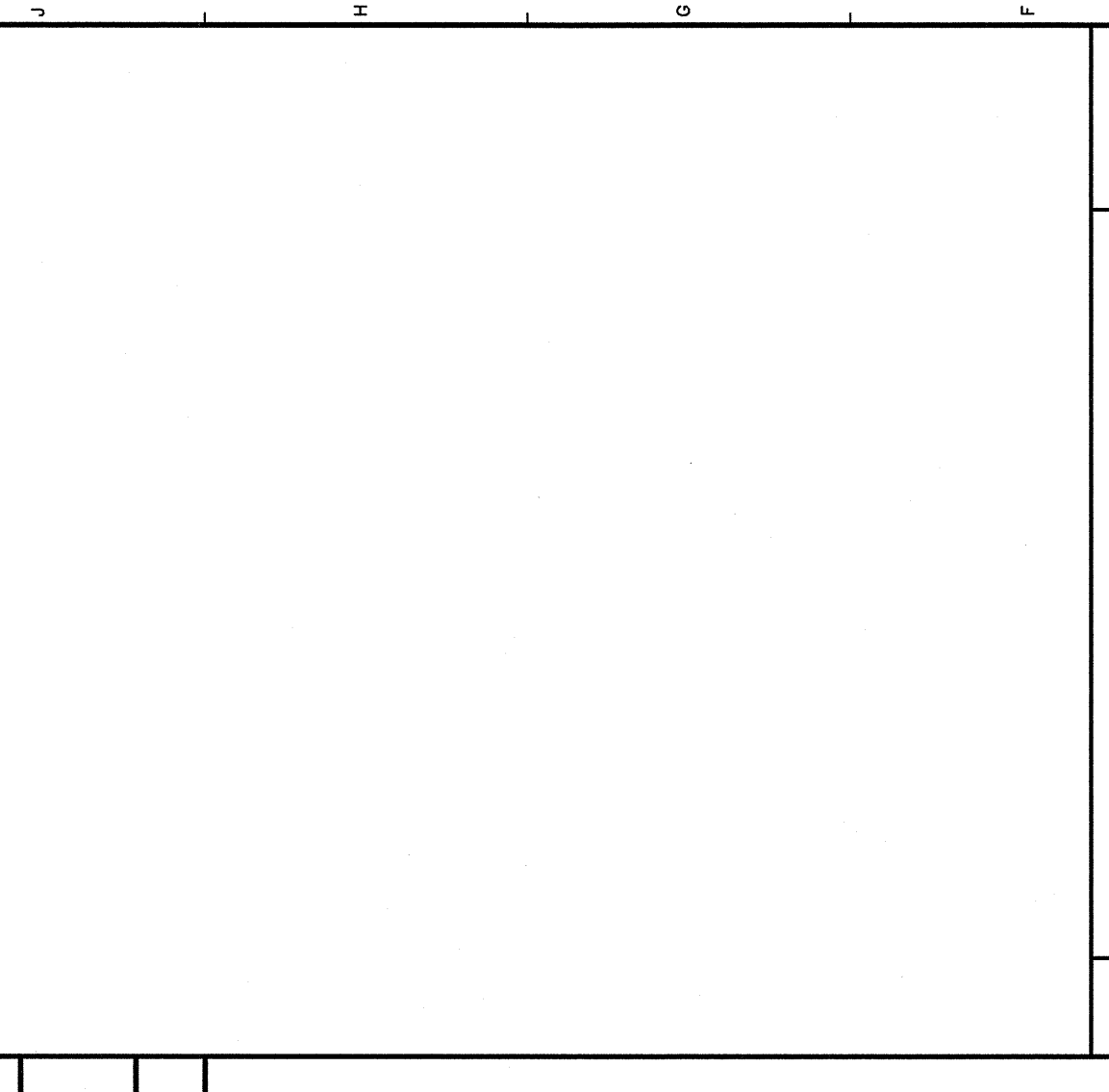
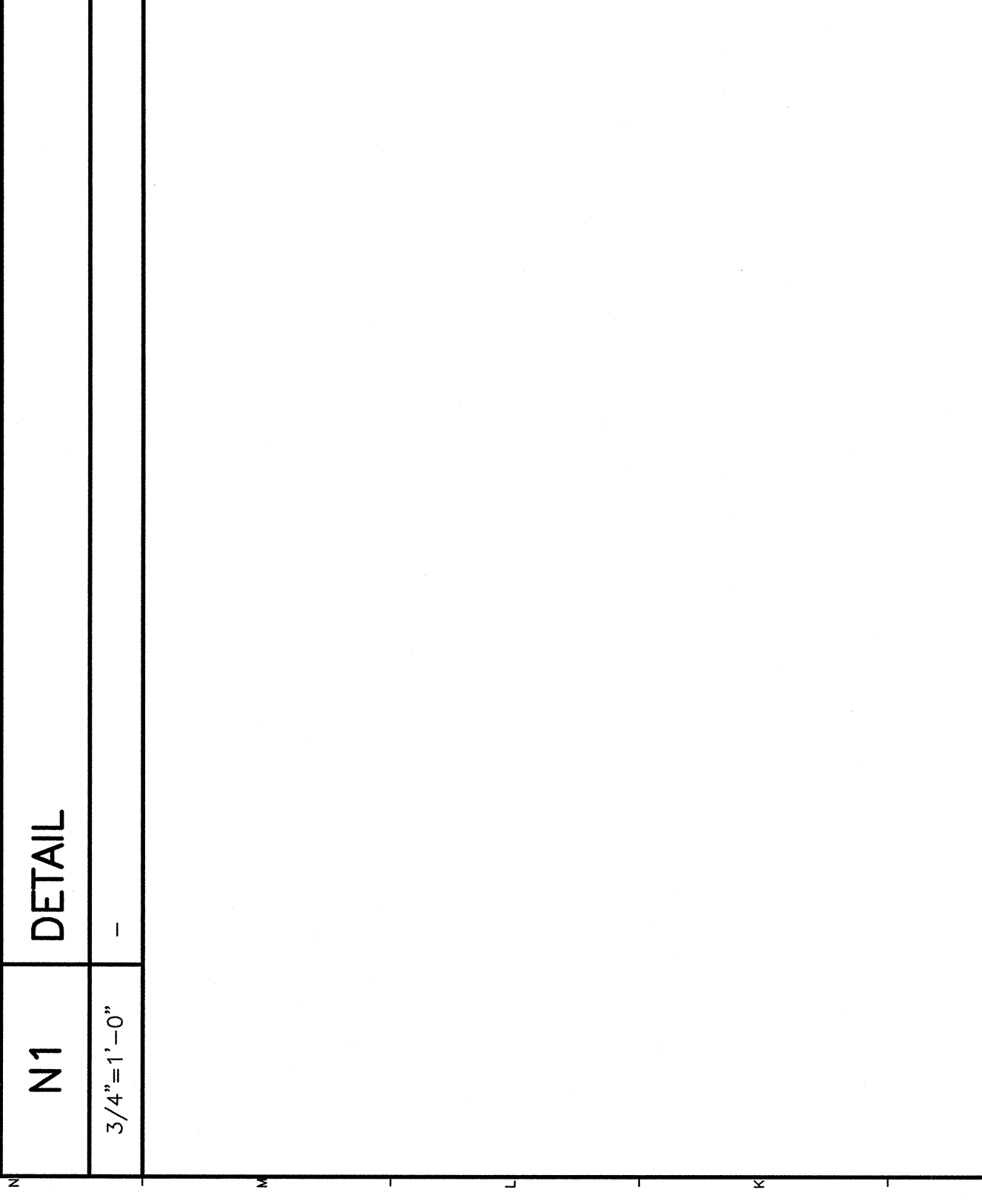
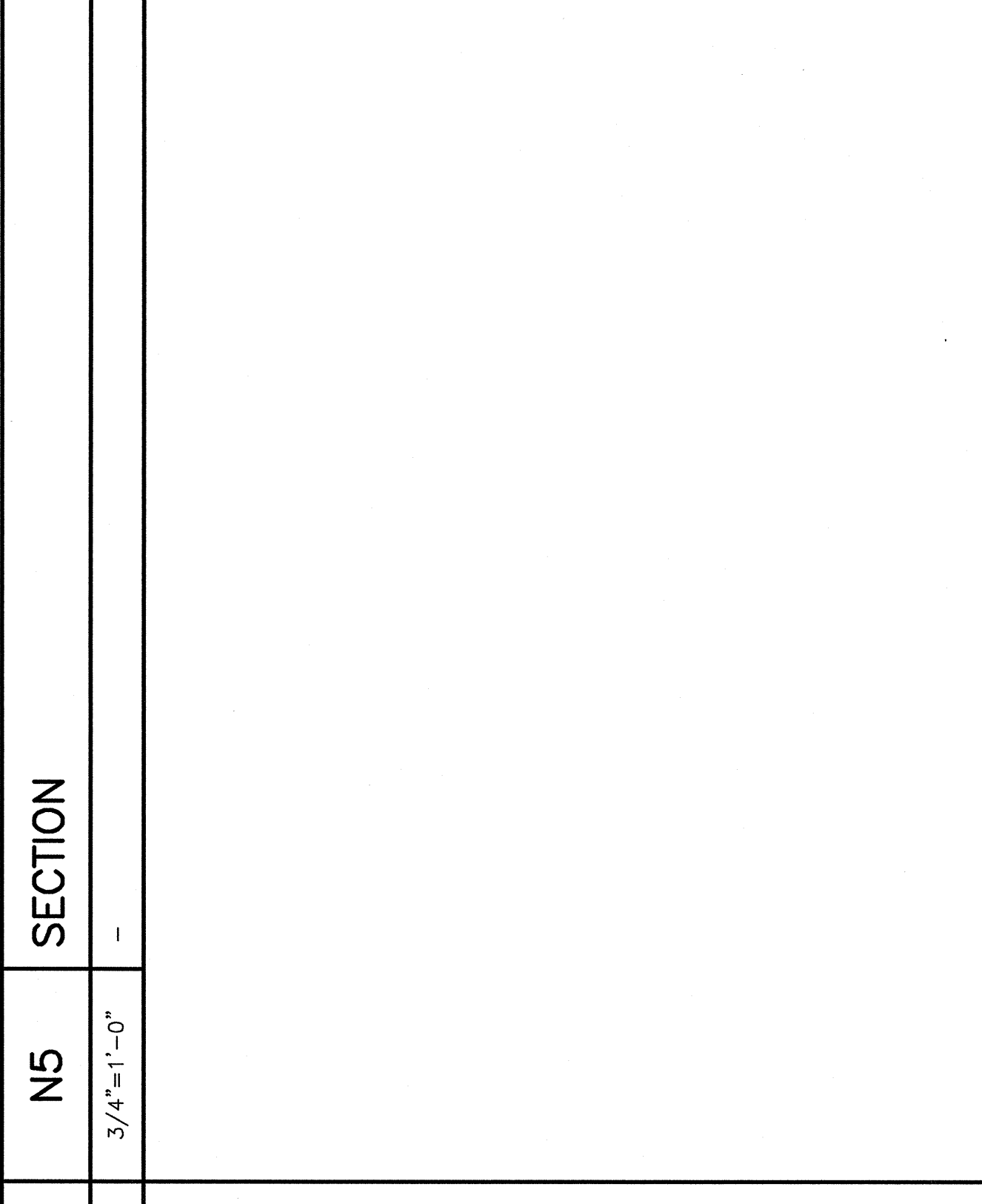
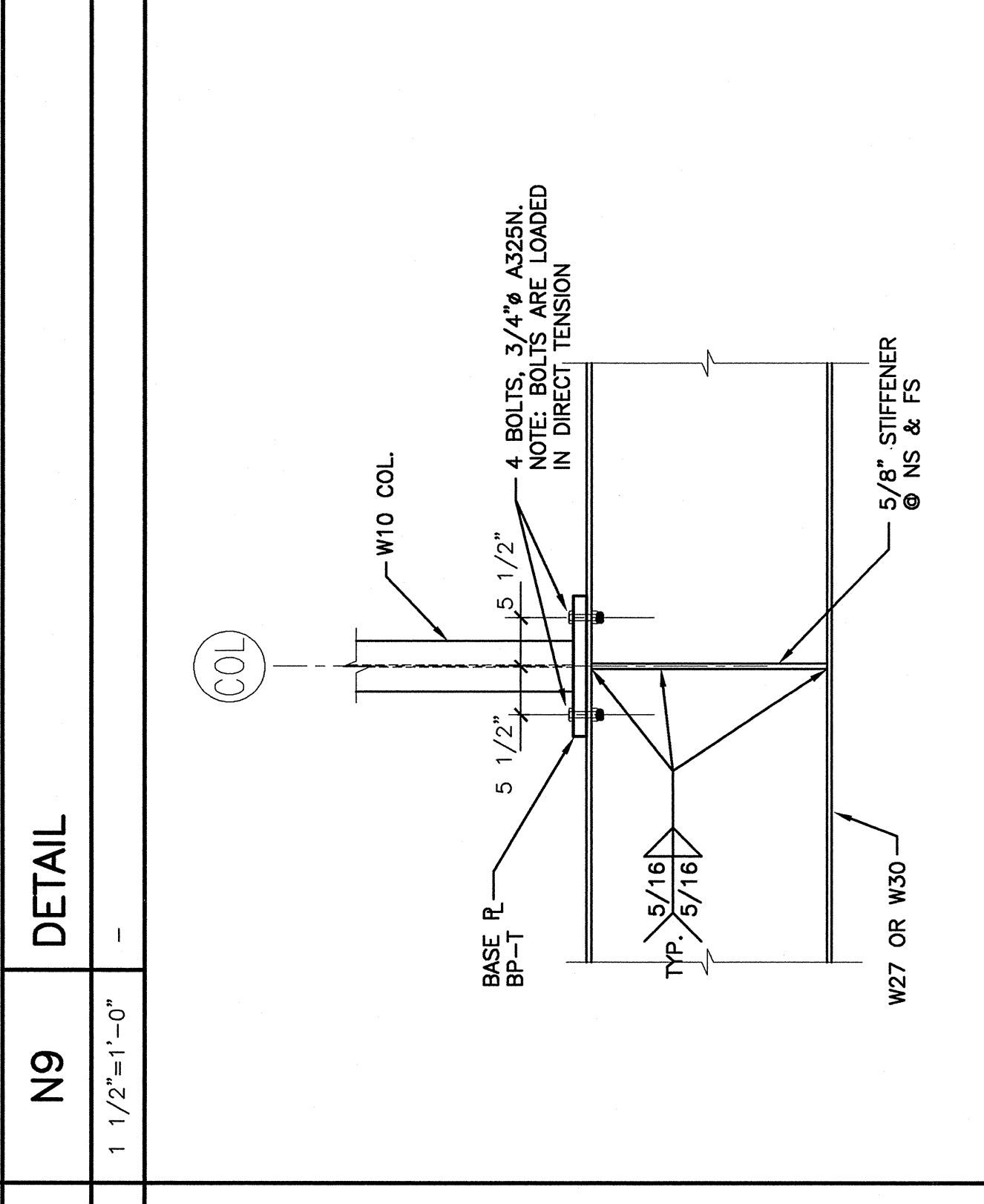
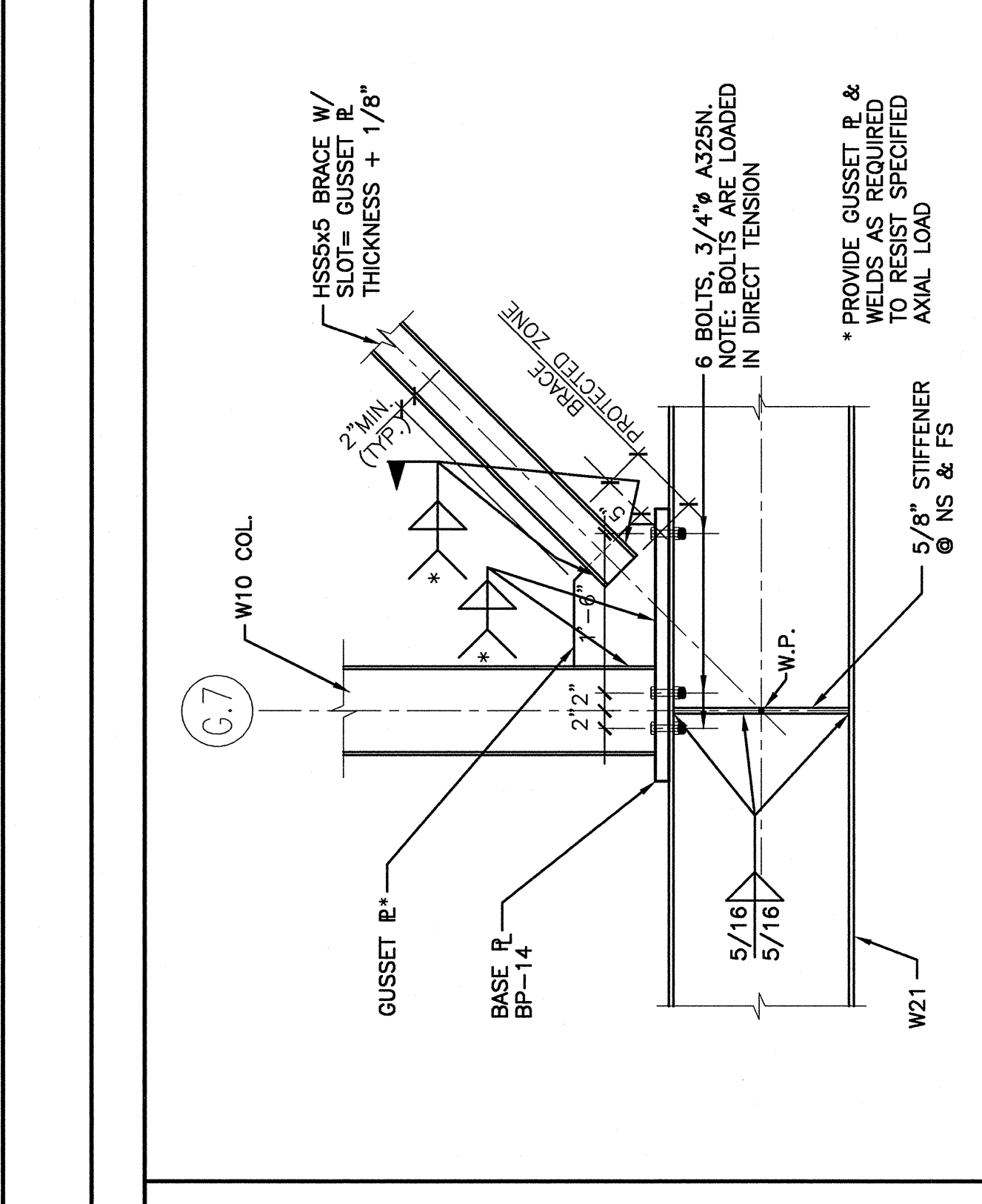
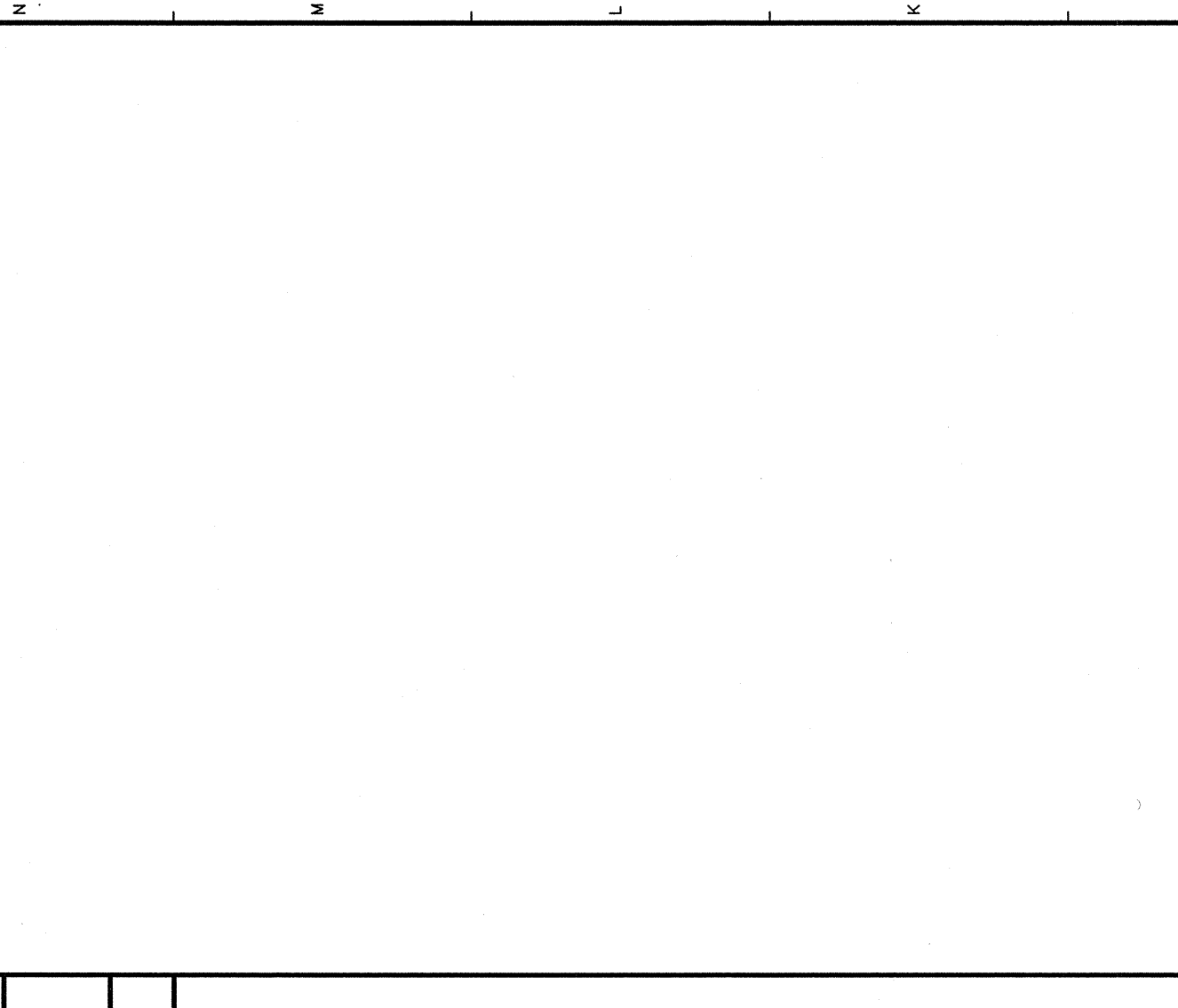
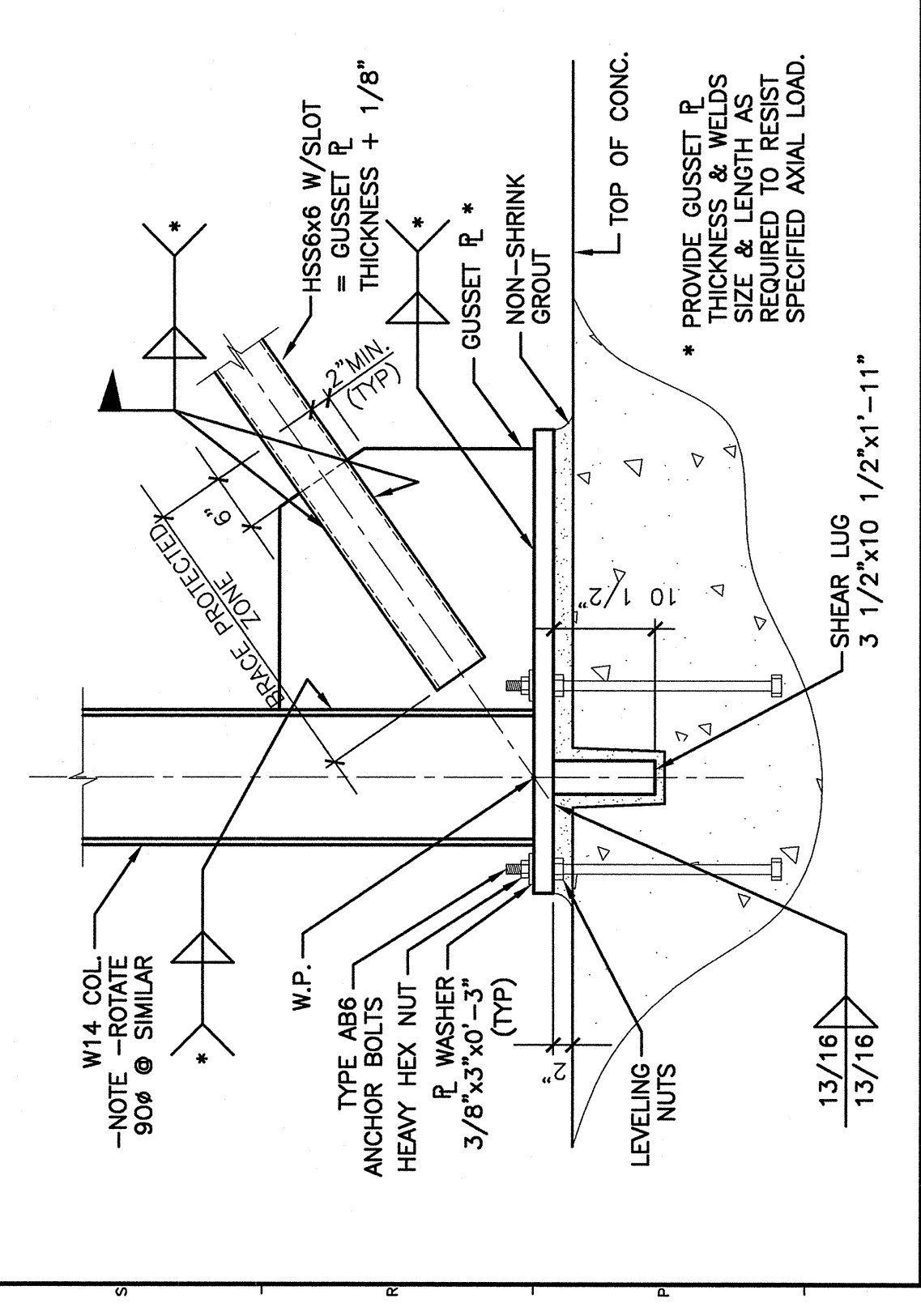
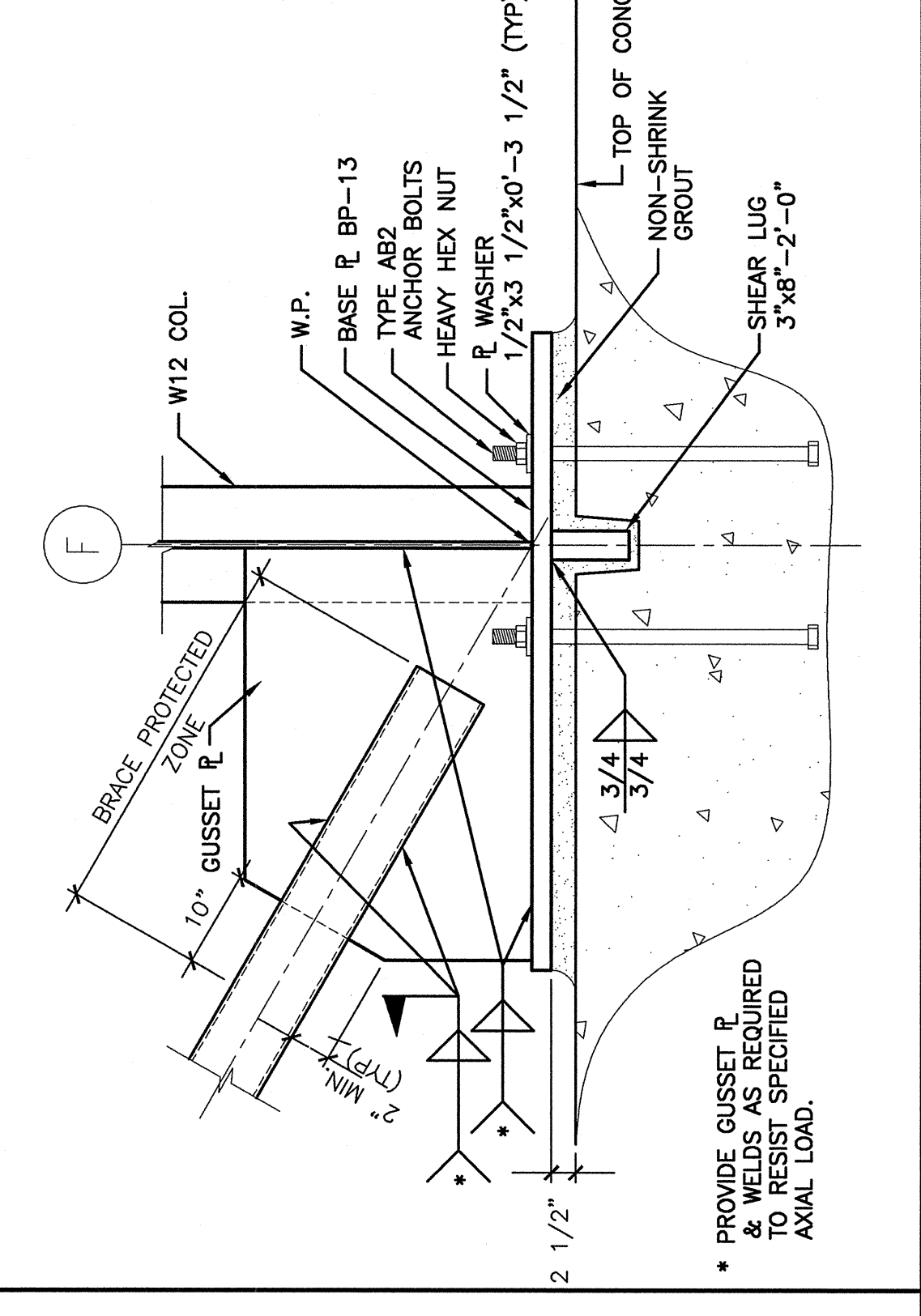
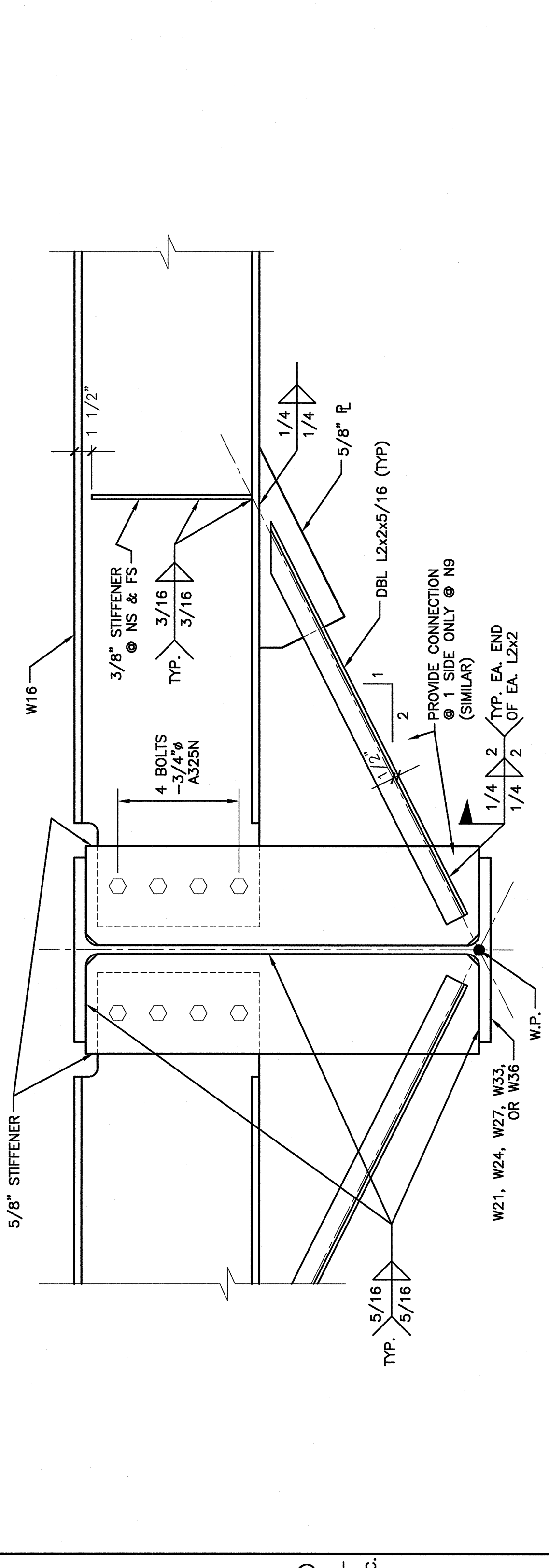


**NOTE:**

1. ALL MEMBERS AND CONNECTIONS SHOWN ON THIS SHEET ARE PART OF THE SEISMIC LOAD RESISTING SYSTEM.
2. THE PROTECTED ZONE FOR EACH BRACE SHALL BE TAKEN AS THE MIDDLE 1/4 OF THE BRACE LENGTH. SEE CONNECTION DETAILS FOR ADDITIONAL PROTECTED ZONE INFORMATION. CONNECTION E'S SHALL BE INCLUDED IN THE PROTECTED ZONE.
3. DESIGN BRACING CONNECTIONS FOR AXIAL LOADS INDICATED. BRACES ARE TO BE DESIGNED FOR TENSION AND COMPRESSION. PLUS SIGN INDICATES A TENSILE FORCE. MINUS SIGN INDICATES A COMPRESSIVE DESIGN FORCE. CONNECTIONS UTILIZING THE "UNIFORM FORCE METHOD" AS DESCRIBED IN THE AISC BRACING DESIGN AND CONNECTION MANUAL FOR STEEL BUILDINGS FOR STRUCTURAL STEEL DESIGN AND RESISTANCE FACTOR DESIGN, THIRD EDITION.
4. SEE CONNECTION NOTES ON S001 FOR OTHER REQUIREMENTS.



REV.	DESCRIPTION	DATE
0	ISSUED FOR CONSTRUCTION	9-19-06

**ISSUED FOR CONSTRUCTION**  
9-19-06

CURRENT ISSUE STATUS:

**SM RT**  
ARCHITECTURE ENGINEERING PLANNING

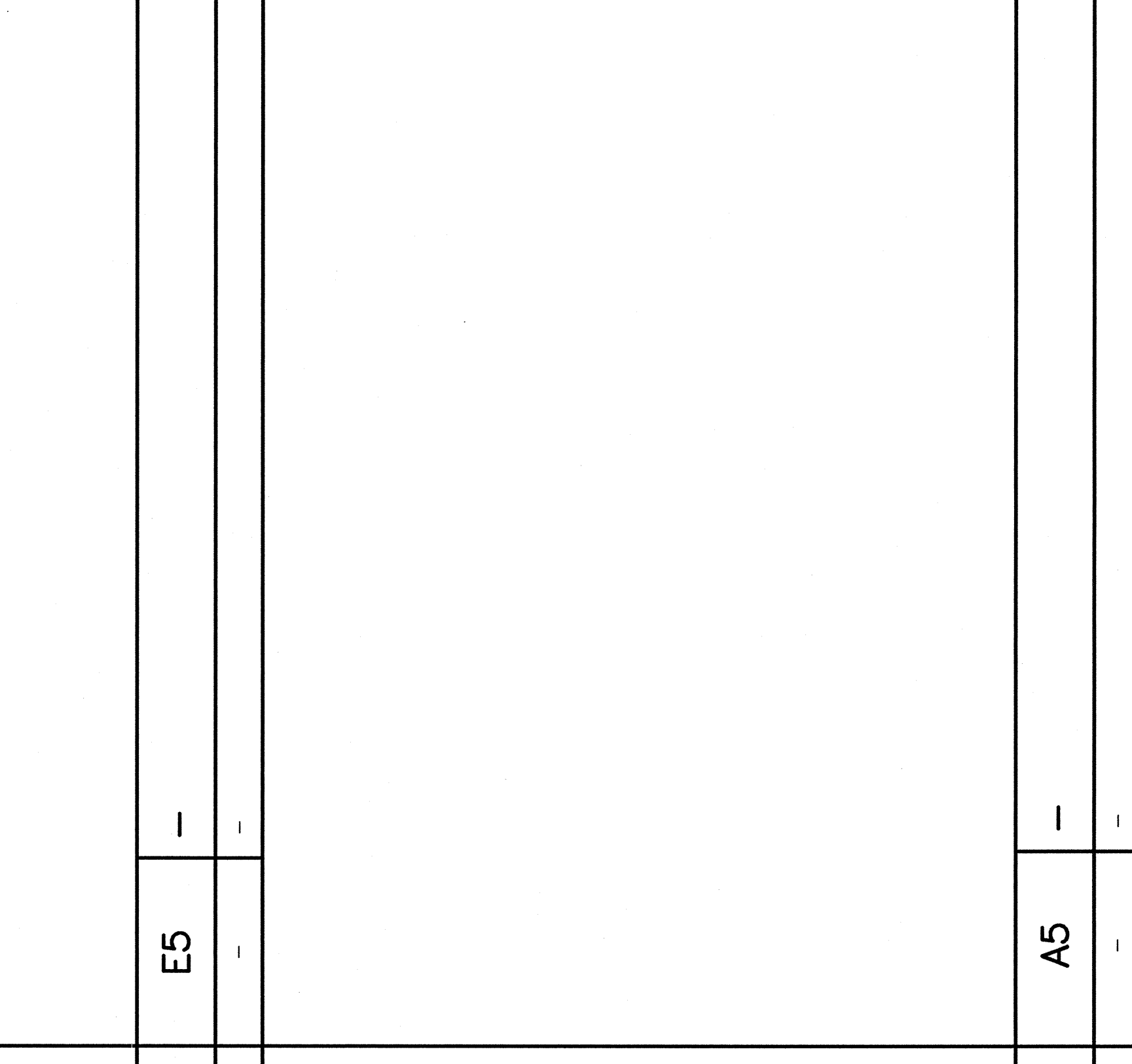
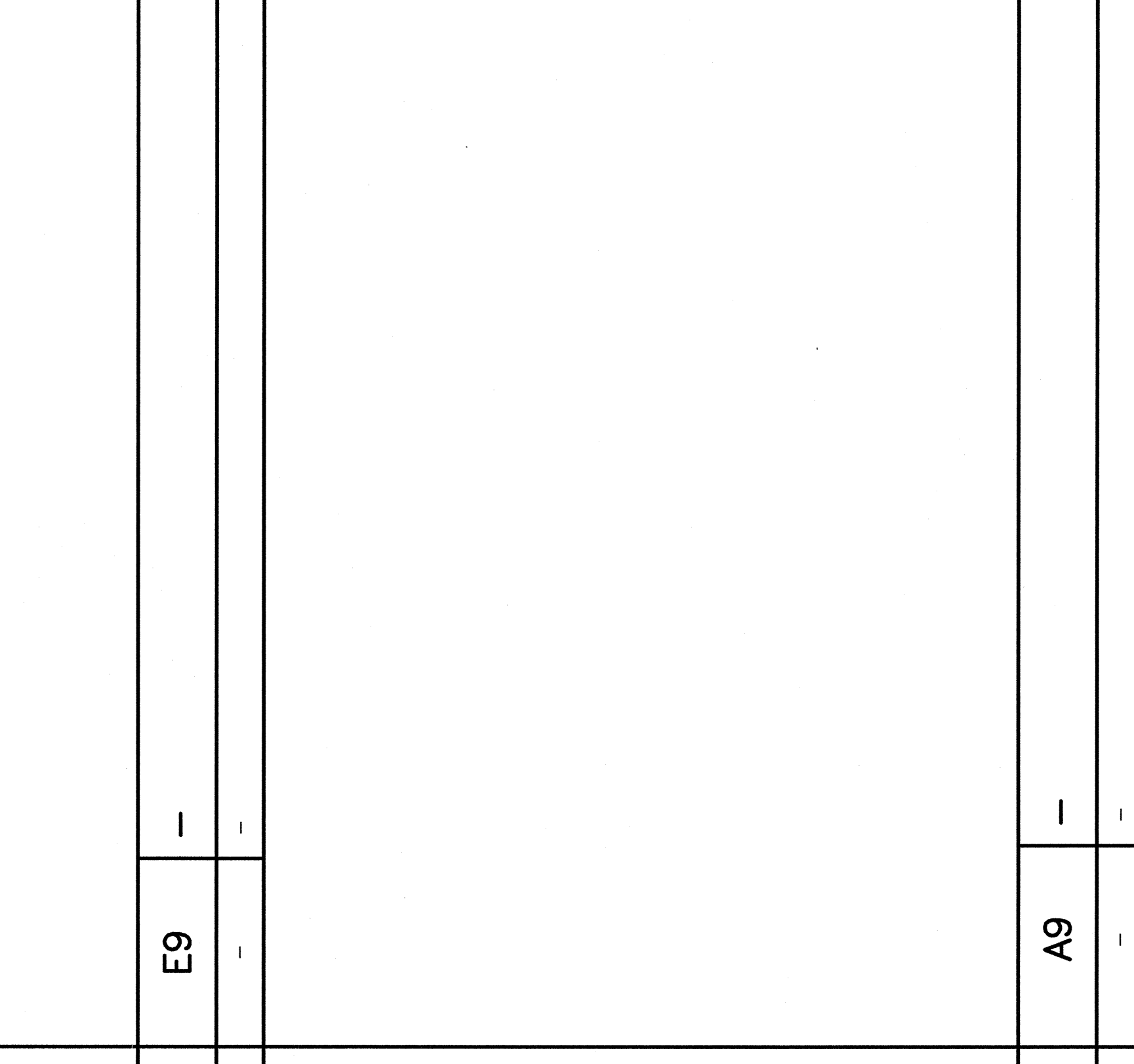
144 Fore Street P.O. Box 618  
Portland, Maine 04104  
tel. (207) 772-3846  
fax. (207) 772-1070

**MERCY HOSPITAL AT FORE RIVER**  
PROJECT 2

PROJECT LOCATION

BRACING  
SECTIONS & DETAILS

SHEET TITLE: AS NOTED DATE: 9-19-06  
PROJECT MANAGER: EJB GRAPHIC SCALE: 1" = 1'-0"  
JOB CAP/DRAWN: AEP  
A/E OF RECORD: JSM  
SMART CAD FILE: SF204-05034  
PROJECT No. 05034



SECTION	DETAIL	SECTION	DETAIL
J1	N1	J9	N9
J5	N5	J14	N14
E1	E1	E9	E9
E5	E5	E14	E14
A1	A1	A9	A9
A5	A5	A14	A14