

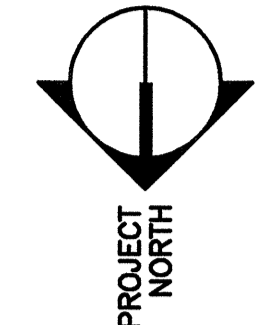
**NOTES:**

- FOR GENERAL NOTES SEE S6001
- TYPICAL DECK: CONCRETE SLAB ON 2W20 GALV. COMPOSITE DECK. REIN. 6#6-W2.1M2.1. TOTAL FLOOR DECK THICKNESS 9 1/2". T.O. CONC. DECK EL. 59'-4".
- THE CONCRETE DECK THICKNESS SHALL BE INCREASED IF REQUIRED TO COMPENSATE FOR BEAM DEFLECTION DURING CONCRETE POUR.
- T.O.S. EL. 58'-9 1/2" TYP. U.N.O.
- REINFORCEMENTS, INDICATED XX, ARE PROVIDED AT END OF BEAMS, DESIGNED AS COMPOSITE W/ THE CONCRETE SLAB, FOR CONNECTION DESIGN. SEE S6001 FOR ADDL. REQUIREMENTS.
- NUMBERS IN BRACKETS SHOWING TYP. [ ] INDICATE THE REQUIRED NUMBER OF SHEAR CONNECTORS THAT SHALL BE FIELD WELDED TO THE BEAM TOP FLANGE. SPACE UNIFORMLY ALONG SPAN. SEE S6001 FOR REQUIREMENTS.
- "c-x" DESIGNATES REQUIRED CAMBER AT MIDSPAN.

REV.	DESCRIPTION	DATE
0	ISSUED FOR CONSTRUCTION	9-19-06

**ISSUED FOR CONSTRUCTION**  
**9-19-06**

CURRENT ISSUE STATUS:

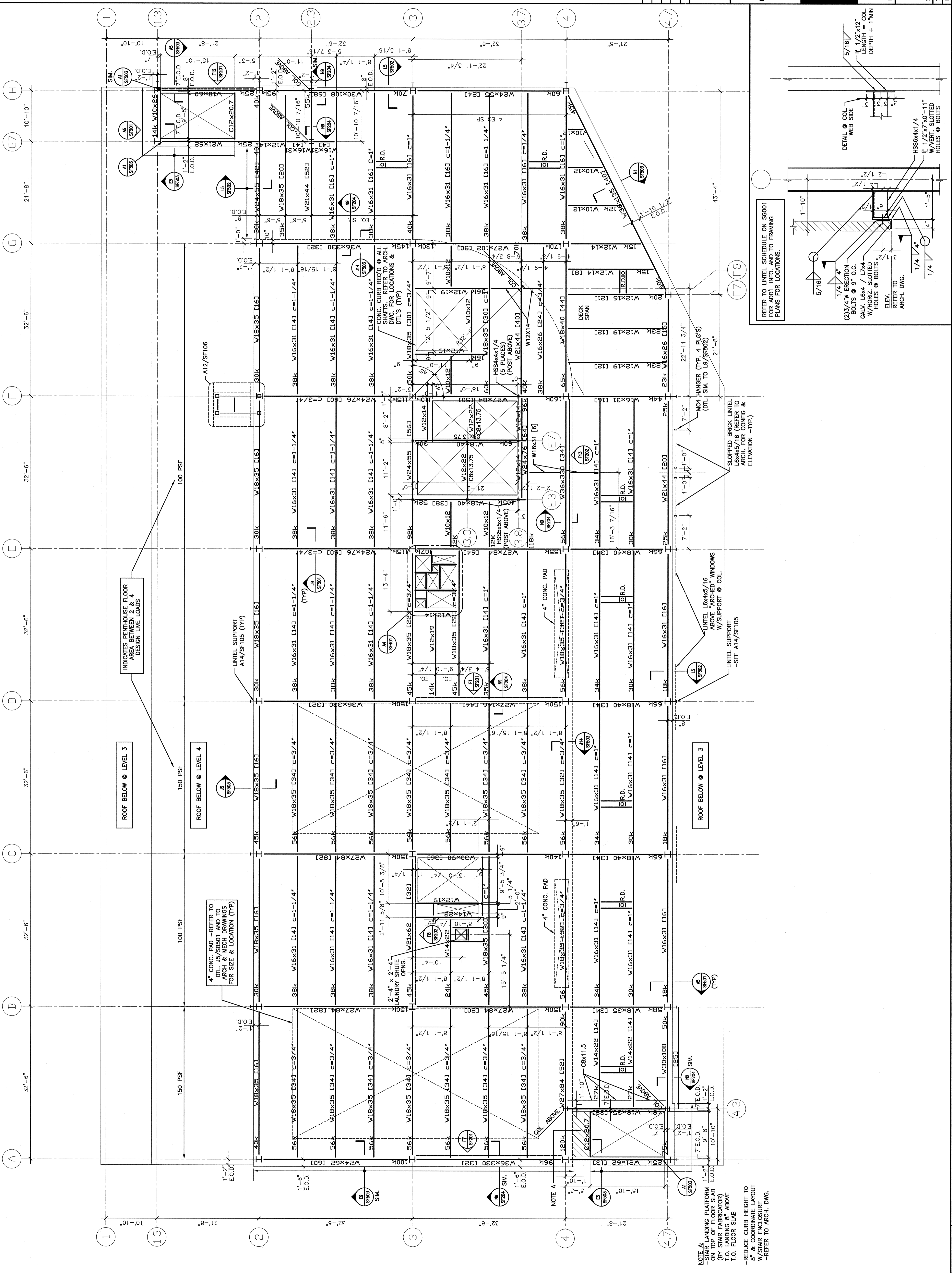


ARCHITECTURE ENGINEERING PLANNING  
144 Fore Street P.O. Box 618  
Portland, Maine 04104  
tel. (207) 772-3846  
fax. (207) 772-1070

**MERCY HOSPITAL AT FORE RIVER**  
**PROJECT 2**  
LOCATION

**LEVEL 5**  
**FLOOR FRAMING PLAN**

SHEET TITLE: LEVEL 5 FLOOR FRAMING PLAN  
SCALE: AS NOTED DATE: 9-19-06  
PROJECT MANAGER: ELB  
JOB CAP/DRAWN: HCC  
A/E OF RECORD: JSW  
SMART CAD FILE: SF105-05034  
PROJECT No. 05034  
SHEET No. SF105



A1	LEVEL 5 FLOOR FRAMING PLAN	1/8"=1'-0"
A14	TYP. LINTEL SUPPORT @ COLUMN	3/4"=1'-0"