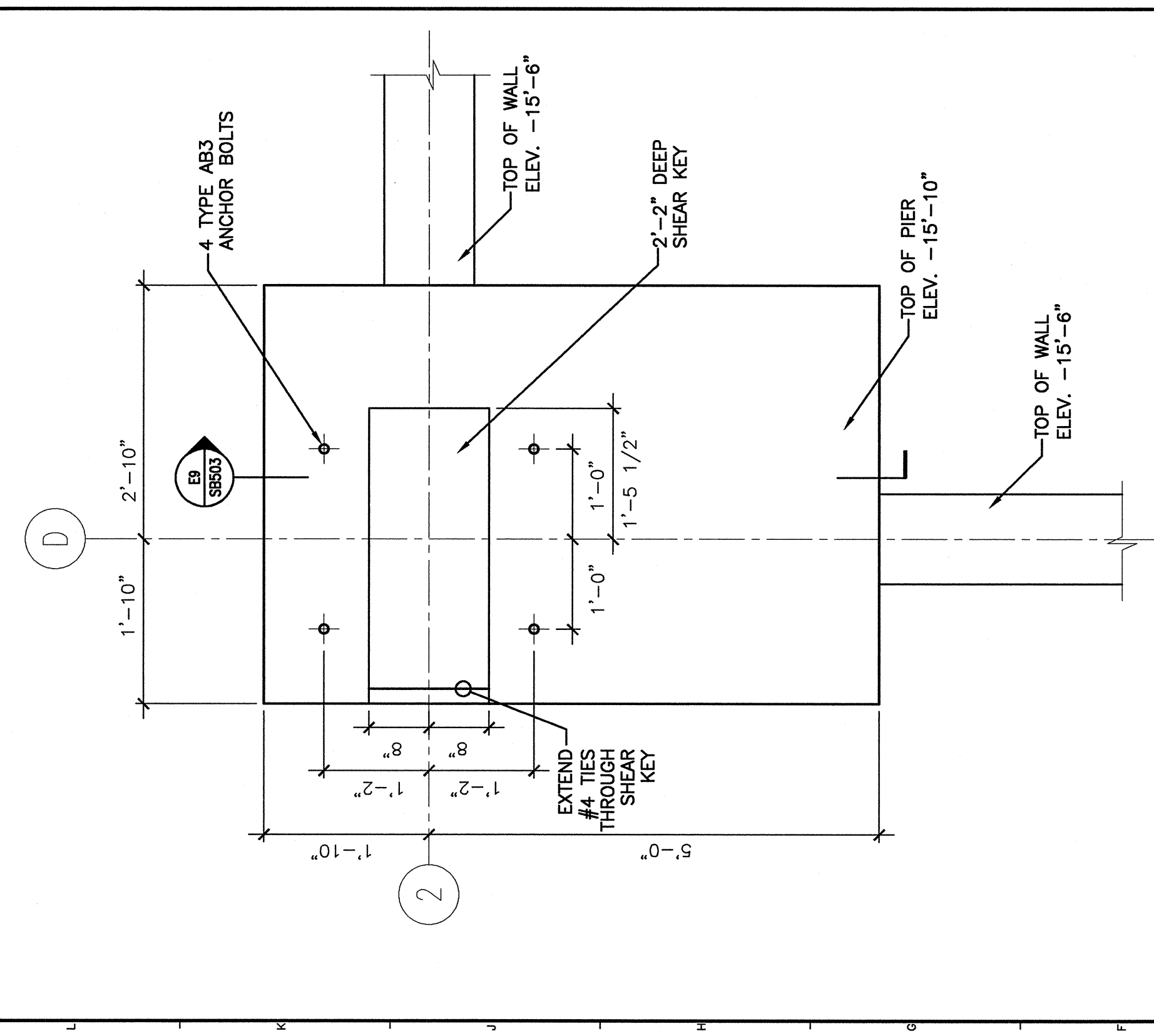
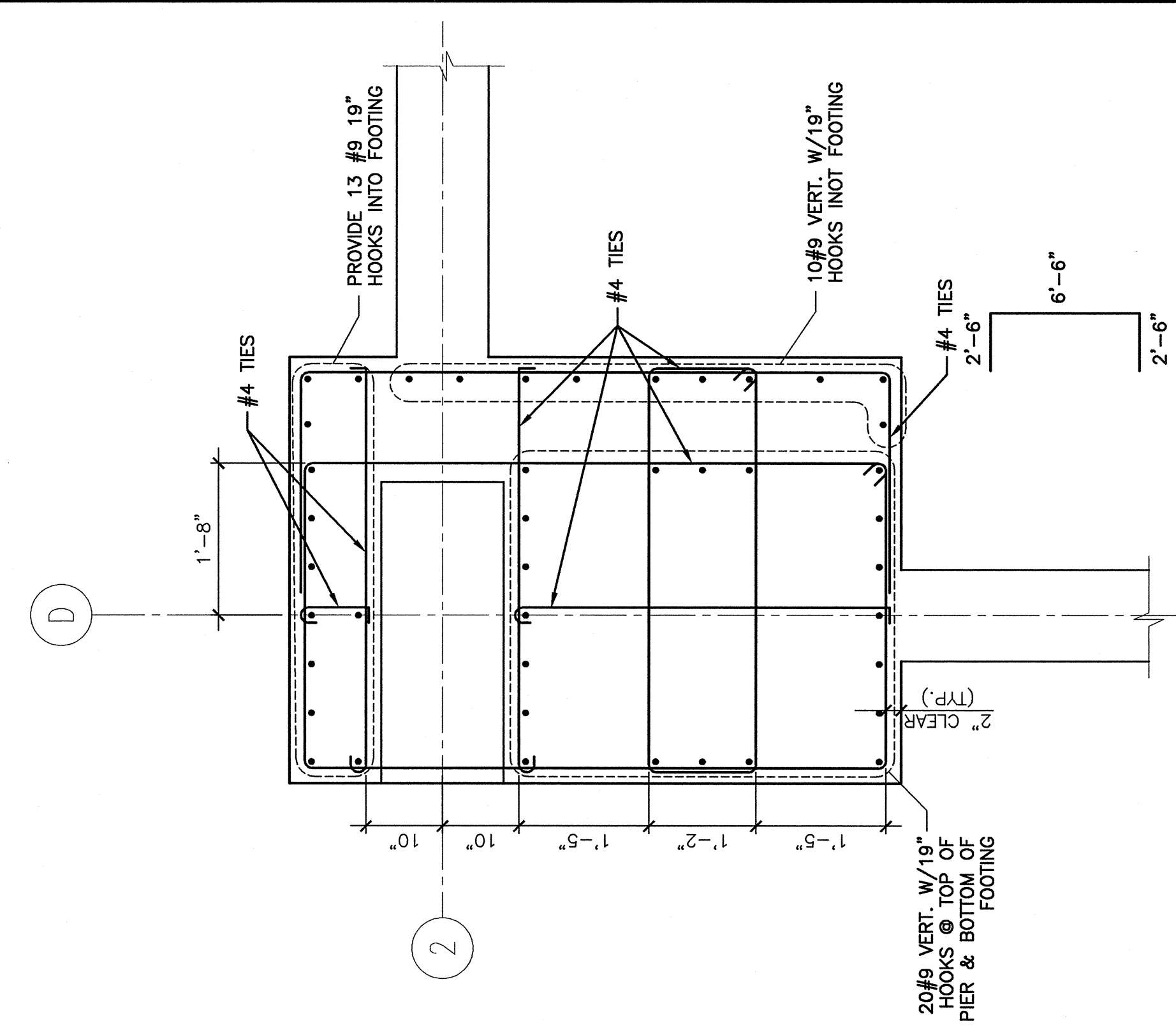


N1 DETAIL
1 1/2"x1'-0"

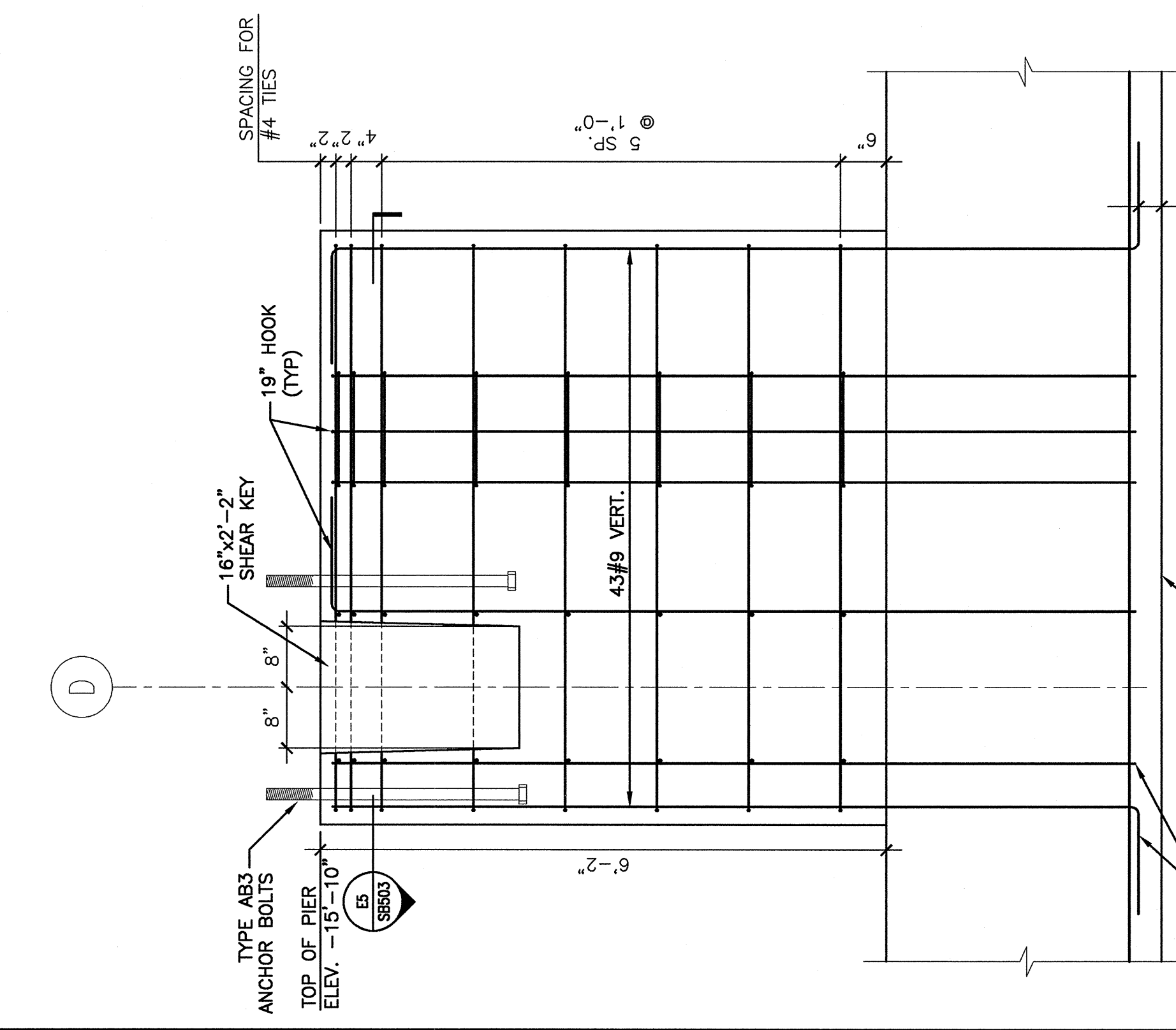
N5 -
-



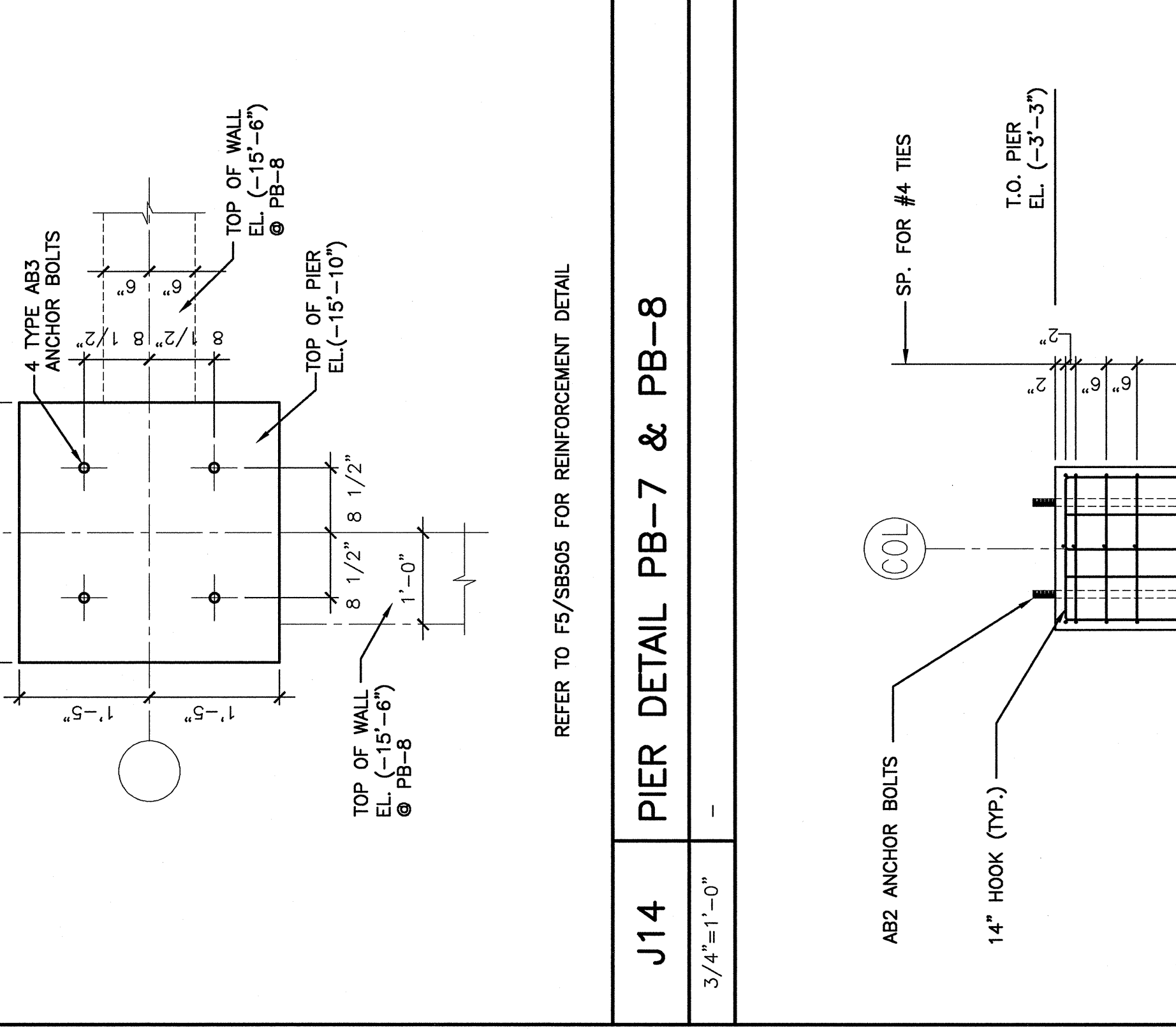
N2 DETAIL
1'-10" x 1'-10"



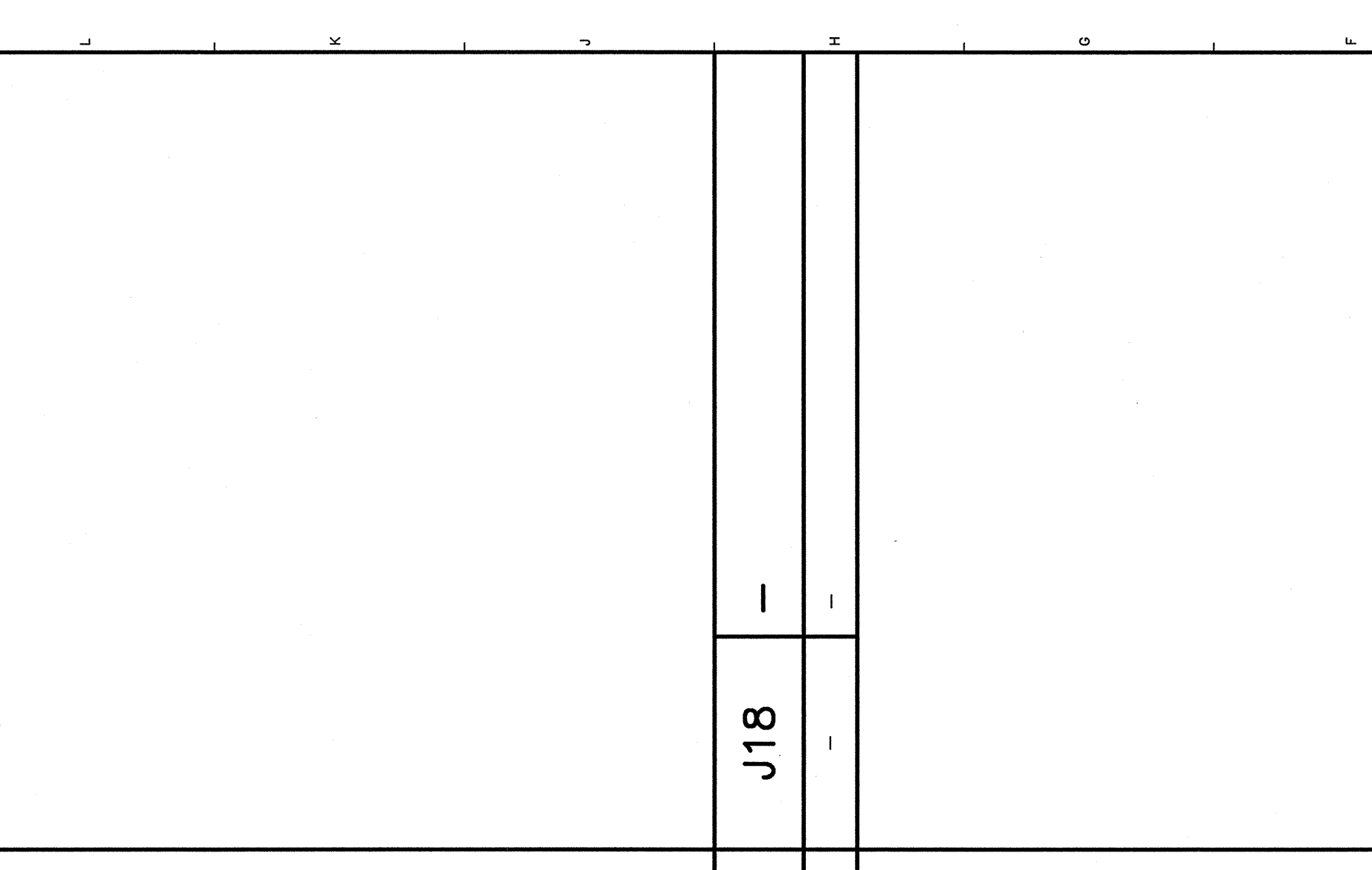
N3 DETAIL
1'-10" x 1'-10"



N4 PIER REINF. DETAIL - PB-R1
3/4"x1'-0"

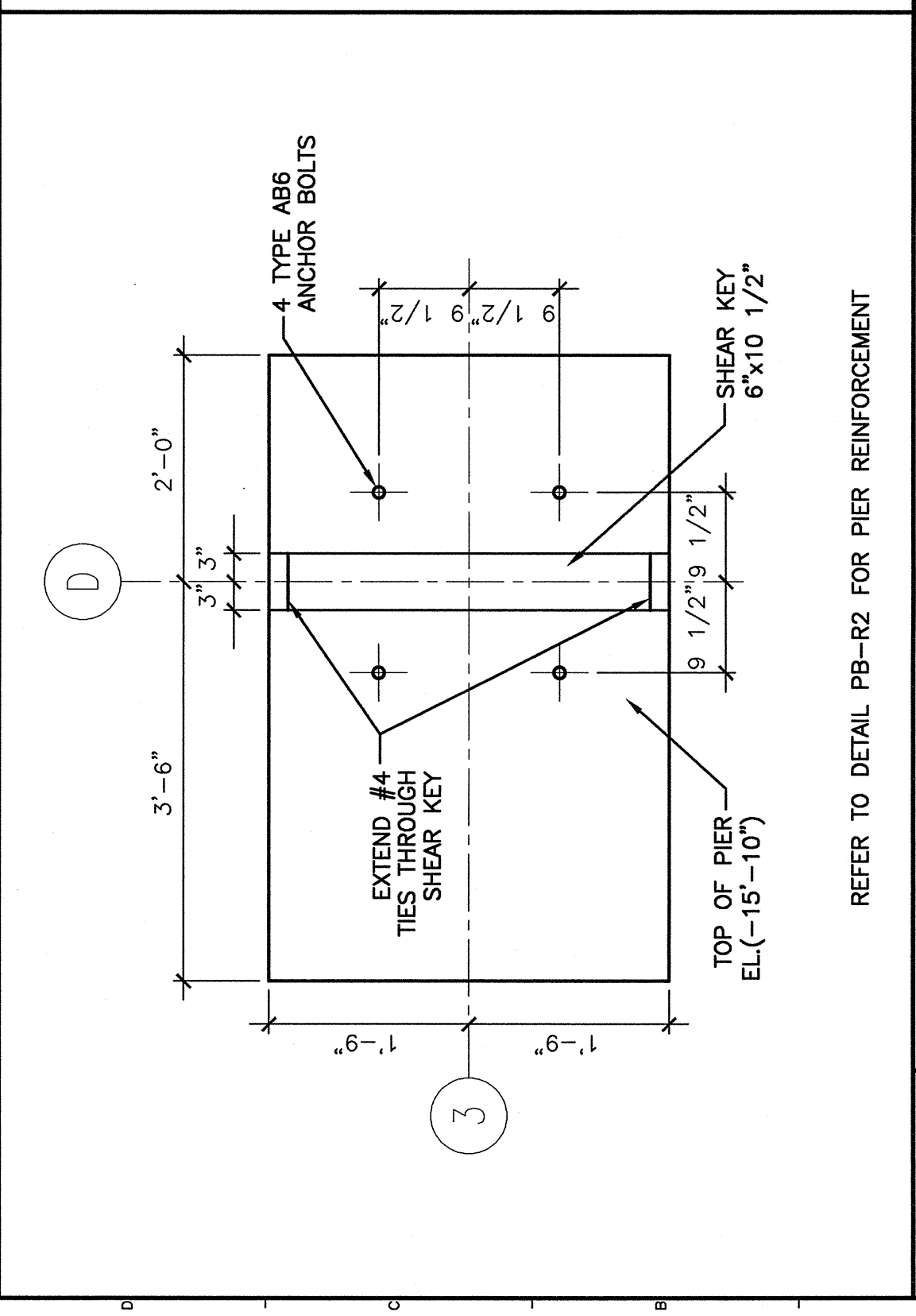


N5 PIER DETAIL PB-7 & PB-8
3/4"x1'-0"

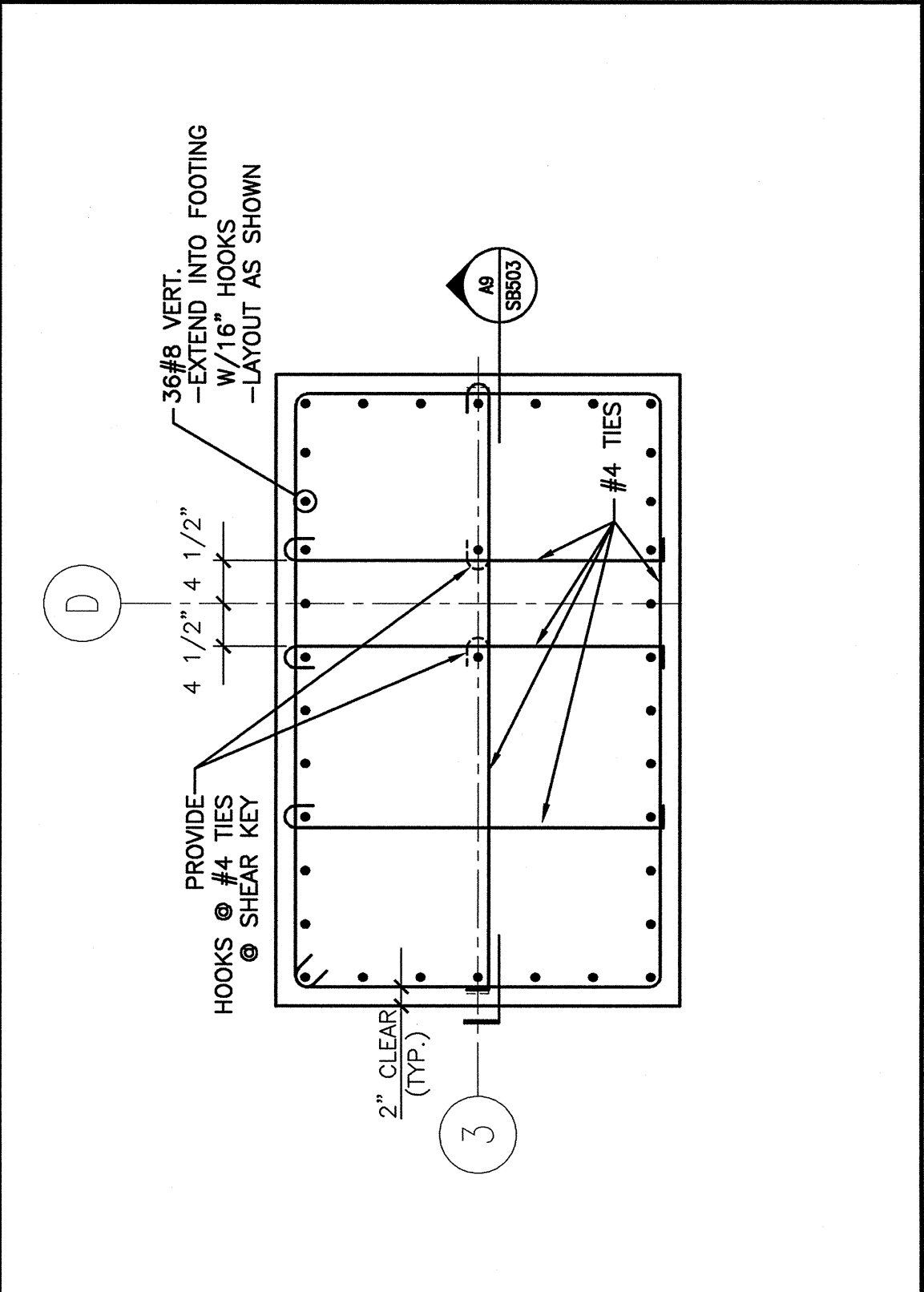


N6 ANCHOR BOLT PLAN
3/4"x1'-0"

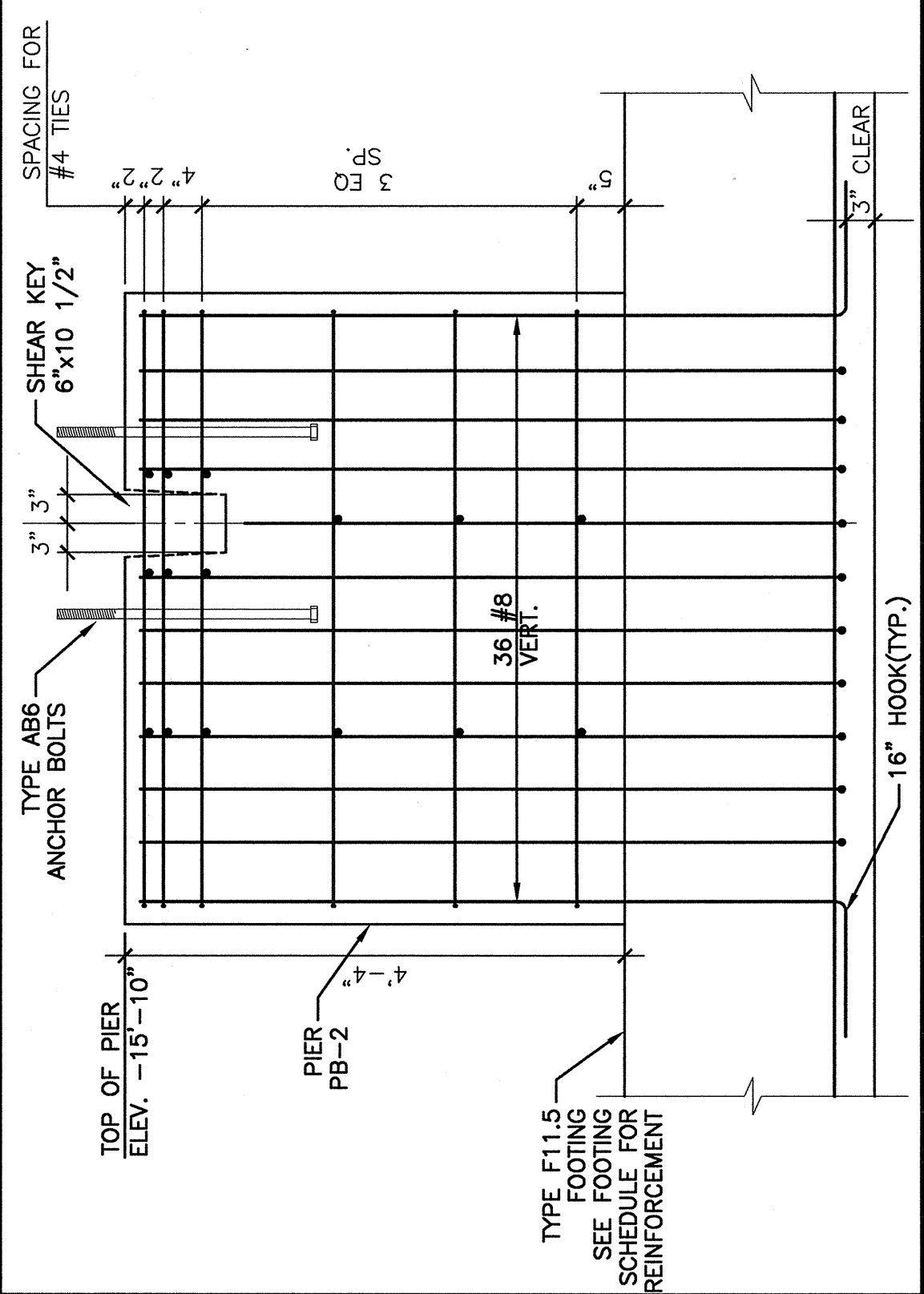
E1 PIER DETAIL PB-3
3/4"x1'-0"



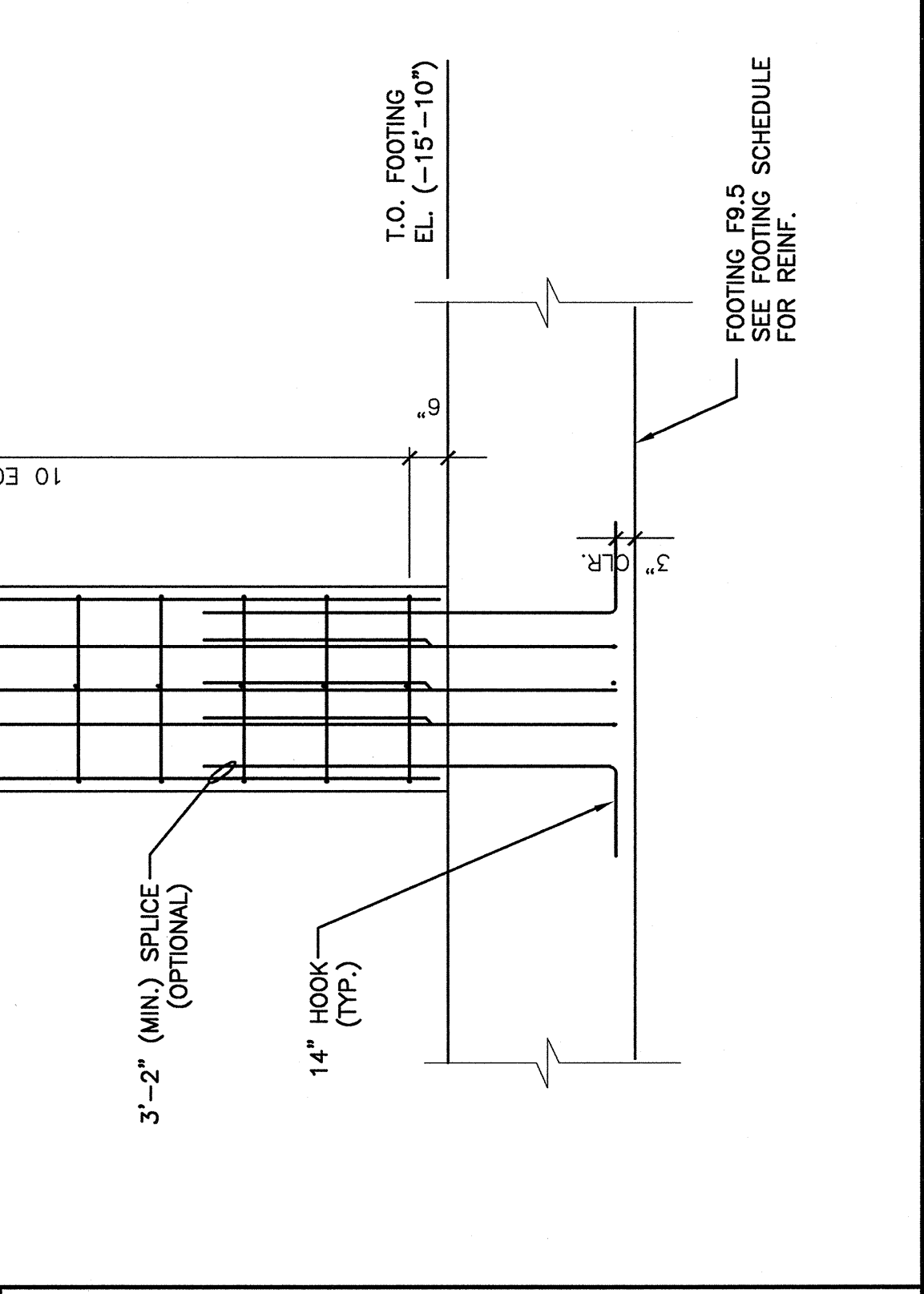
E5 SECTION
3/4"x1'-0"



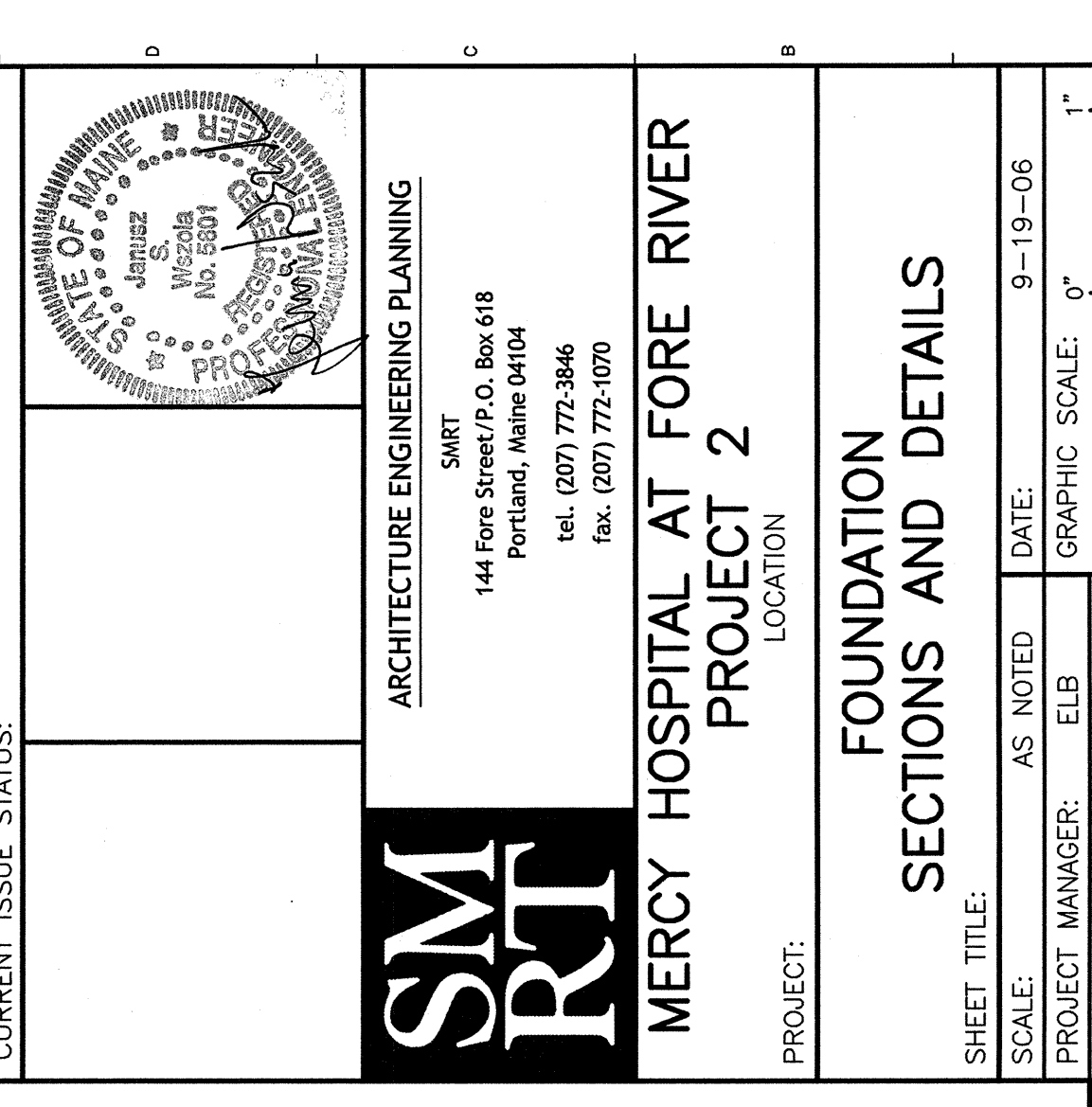
E9 SECTION
3/4"x1'-0"



J14 PIER DETAIL PB-7 & PB-8
3/4"x1'-0"



J18 -
-



A1 PIER DETAIL PB-2
3/4"x1'-0"

A5 PIER REINF. DETAIL PB-R2
3/4"x1'-0"

A9 SECTION
3/4"x1'-0"

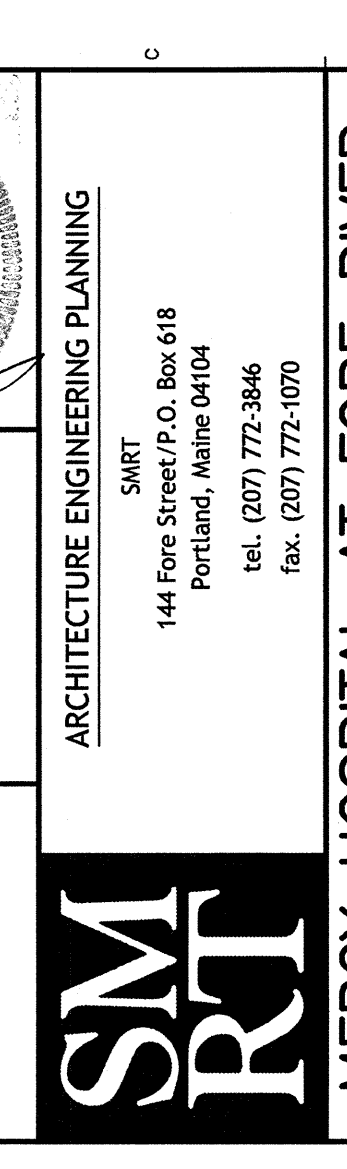
A14 SECTION
1/2"x1'-0"

A18 SECTION
3/4"x1'-0"

REV.	DESCRIPTION	DATE
0	ISSUED FOR CONSTRUCTION	9-19-06

ISSUED FOR CONSTRUCTION
9-19-06

CURRENT ISSUE STATUS:



SMRT
ARCHITECTURE ENGINEERING PLANNING
144 Fore Street, P.O. Box 618
Portland, Maine 04104
Tel. (207) 772-8486
Fax. (207) 772-0070

MERCY HOSPITAL AT FORE RIVER
PROJECT 2
LOCATION

FOUNDATION SECTIONS AND DETAILS

SHEET TITLE: AS NOTED DATE: 9-19-06
PROJECT MANAGER: ELB GRAPHIC SCALE: 1"=1'-0"
JOB CHG/DRAWN: HCC
DATE OF RECORD: JSM
SHEET NO.: SB503
SMRT CAD FILE: SB503-05034
PROJECT NO.: 05034