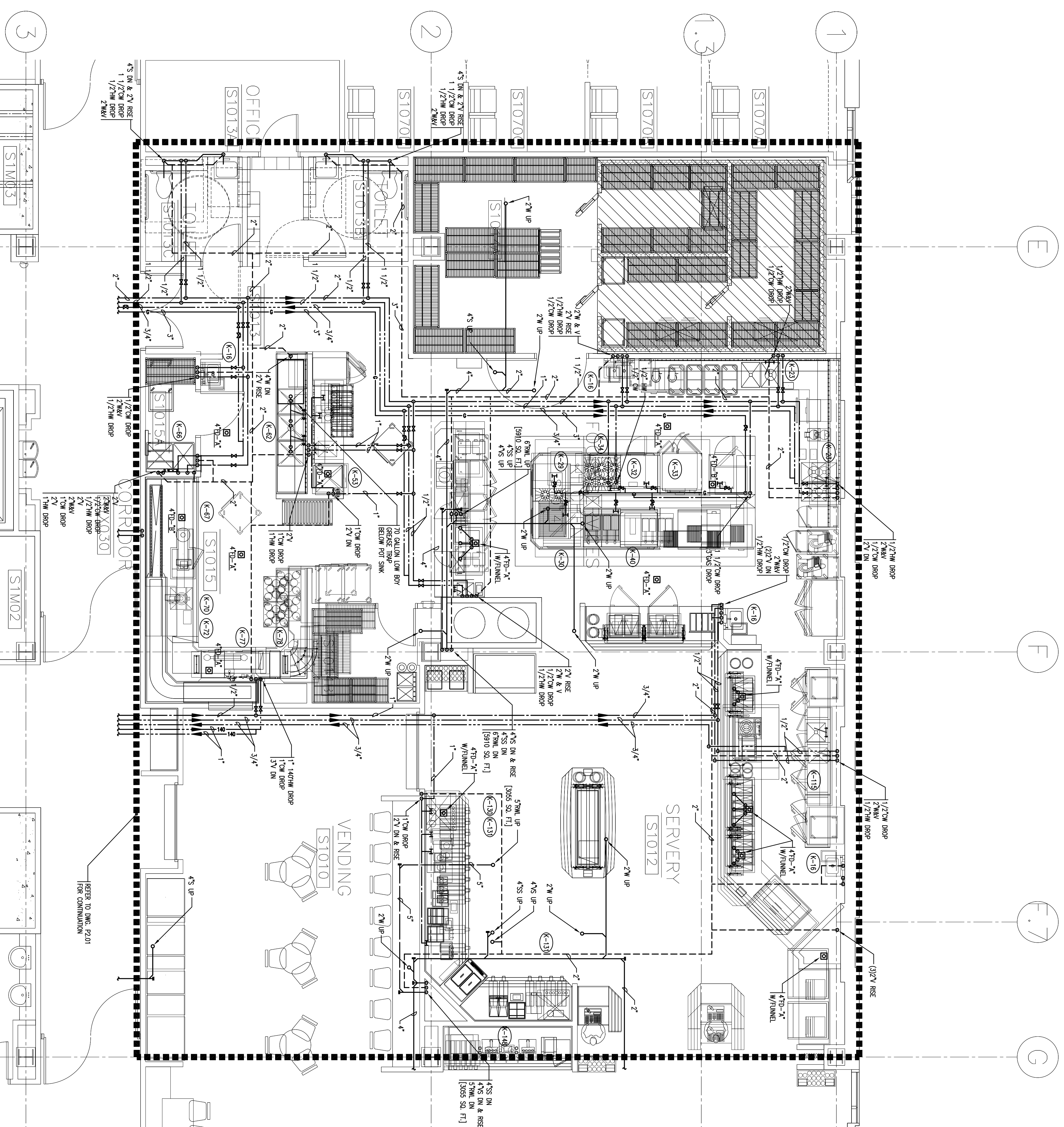
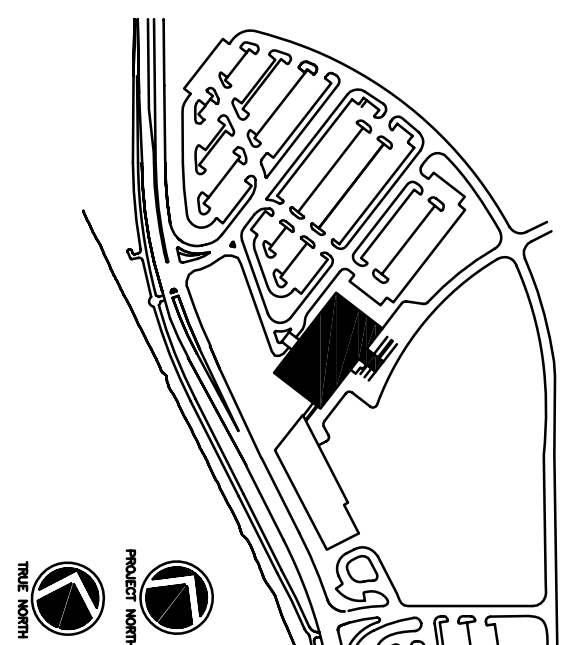


SYMBOL	FITTURE	CONNECTIONS				GAS	REMARKS
		W	V	CW	HW		
(K-18)	HAND SINK	2"	1/2"	1/2"	1/2"	-	
(K-23)	DISPENSER WITH CONTROL	3"	-	3/4"	-	-	
(K-29)	TURBO CHEF OVEN	-	-	-	-	-	
(K-30)	GRIDDLE W/ CONNECTION OVEN	-	-	-	-	130	3/4"
(K-32)	DOUBLE STEWART	-	-	1/2"	-	144	1/2"
(K-33)	DOUBLE CONNECTION OVEN	-	-	-	-	120	1"
(K-34)	DOUBLE CONNECTION OVEN	-	-	1/2"	-	53	3/4"
(K-39)	12 GAL KETTLE	-	-	1/2"	-	108	3/4"
(K-39)	OHM BROILER	-	-	-	-	-	-
(K-40)	FRIGS/TURBO/IMP ASSEMBLY	-	-	-	-	-	-
(K-53)	CHEF ICE MAKER	-	2"	1"	-	-	-
(K-52)	3-COMPARTMENT SINK	-	2"	1"	1"	-	-
(K-61)	SOLED DESH TABLE	-	-	-	-	-	-
(K-66)	CAN WASH/IMP SINK	3"	-	1/2"	1/2"	-	-
(K-72)	DISPENSER W/ CONTROL	3"	-	1/2"	-	-	-
(K-70)	COILING MOUNTED HOSE REEL	-	-	-	-	-	-
(K-78)	DISH WASHING MACHINE	-	3"	1"	1" @ 1/2"	-	-
(K-78)	BOOSTER HEATER	-	-	-	3/4 @ 1/2"	-	-
(K-119)	BACK COUNTER W/ SINK	2"	2"	1/2"	1/2"	-	-
(K-13)	AMBIENT CARBONATOR	-	-	1/2"	-	-	-
(K-13)	CHEF ICE MAKER	-	-	1/2"	-	-	-
(K-18)	ICE/WATER DISPENSER	-	-	1/2"	-	-	-



1 FIRST FLOOR - KITCHEN/FOOD SERVICES PART PLAN
 PFP-3 1/4" = 1'-0"



Consultant
 Civil Engineer
 DeLuce-Hoffman Associates, Inc.
 725 Main Street, Suite 8
 Philadelphia, PA 19103
 Phone (207) 775-1121
 Fax (207) 879-0888

Consultant
 ASSOCIATE ARCHITECT/STRUCTURAL ENGINEER
 SHoP
 One State St., Box 618
 Portland, Maine 04104
 Phone (207) 772-5846
 Fax (207) 772-1070

Consultant
 MECHANICAL/ELECTRICAL ENGINEER
 BIRD, BOO & ANDRUS Consulting Engineers, LLC
 311 Arsenal Street
 Portland, ME 04101
 Phone (617) 254-0019
 Fax (617) 242-9339

Consultant
 EQUIPMENT PLANNING
 Equipment Planning
 183 General George Patton Drive
 Franklin, Tennessee 37067
 Phone (615) 376-3114
 Fax (615) 376-3114

Consultant
 CONSTRUCTION MANAGER
 7 Johnson Walkway
 Andover, Massachusetts 02903
 Phone (603) 456-8900
 Fax (401) 456-5516

Consultant
 Interior Solutions, LLC
 1808 West End Ave. Suite 1400
 Nashville, Tennessee 37203
 Phone (615) 321-5591
 Fax (615) 321-5589

It is the responsibility of the Construction Manager/General Contractor and all subcontractors to verify the accuracy and accept conditions of prior work by retained trades before proceeding with any work.

Date
 11/10/06 Final-issued for Construction
 Drawn By
 M.F.
 Scale
 1/4" = 1'-0"

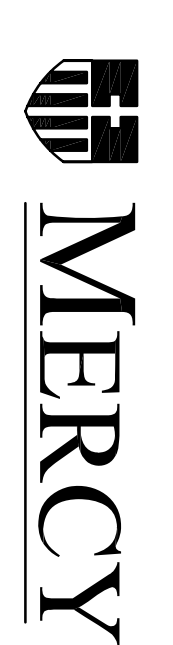
Francis

Caufman

Foley

Hoffmann

Project Title
 Mercy Health Core
 System of Maine
 FORE RIVER SHORT
 STAY HOSPITAL



Project Number
 F05-4898

Drawing Title and Number
 PLUMBING
 PART PLAN
 KITCHEN
 P3.01