

Consultant
Civil/Structural
Delon-Hoffman Associates, Inc.
705 Main Street, Suite 8
Portland, ME 04101
Phone: (207) 775-1121
Fax: (207) 879-0888

Consultant
ASSOCIATE ARCHITECT/STRUCTURAL ENGINEER
SMART One State St., Box 618
Portland, ME 04101
Phone: (207) 772-3848
Fax: (207) 772-1070

Consultant
MECHANICAL/ELECTRICAL ENGINEER
Bord, Bost + Abunas Consulting Engineers, LLC
311 Aerial Street
Portland, ME 04101
Phone: (207) 754-0010
Fax: (207) 754-0010

Consultant
EQUIPMENT PLANNING
1883 General George Patton Drive
Franklin, Tennessee 37067
Phone: (615) 376-3114
Fax: (615) 376-3114

Consultant
CONSTRUCTION MANAGER
7 Johnson Wharf
Portland, ME 04101
Phone: (401) 456-5993
Fax: (401) 456-5516

Consultant
Hoffmann
1808 West End Ave. Suite 1400
Portland, ME 04101
Phone: (615) 321-5591
Fax: (615) 321-5589

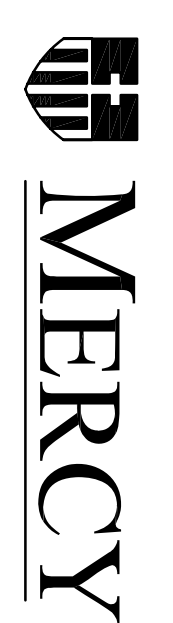
11/10/06 Find-Issued for Construction
Drawn By
NJP
Scale
1/8" = 1'-0"

Francis
Coffman

Foley
Hoffmann

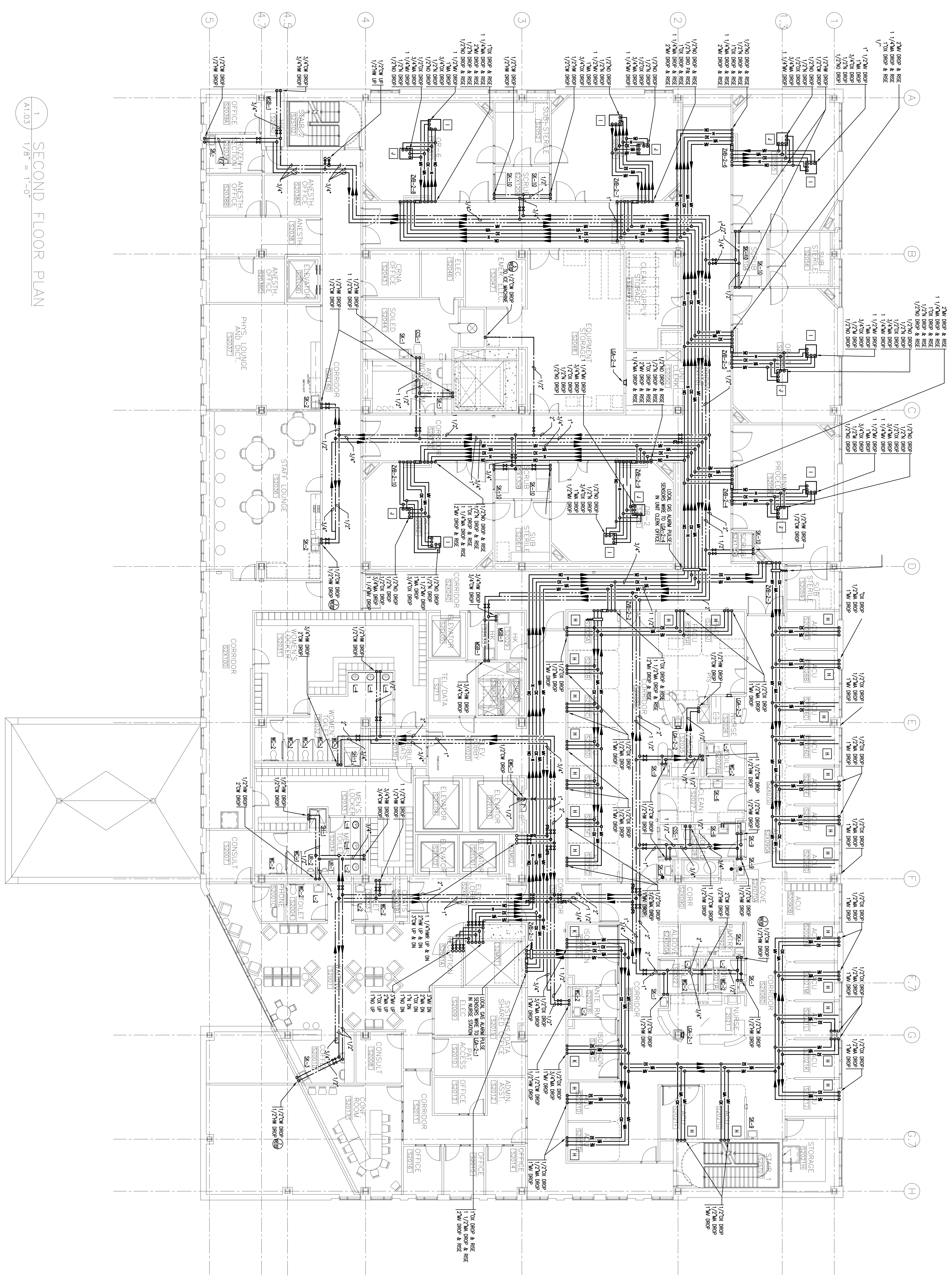
Project Title
Mercy Health Core
System of Maine
FORE RIVER SHORT
STAY HOSPITAL

2120 Ash Street
Philadelphia, PA 19103
215-568-8250



Project Number
F05-4898

Drawing Title
PLUMBING
LEVEL 2 FLOOR PLAN
SUPPLY
P2.02



1 SECOND FLOOR PLAN
A1.03 1/8" = 1'-0"