

Consultant
Civil Engineer
Delaney-Hoffman Associates, Inc.
728 Main Street, Suite 8
Portland, ME 04106
Phone: (207) 775-1121
Fax: (207) 879-0888

Consultant
ASSOCIATE ARCHITECT/STRUCTURAL ENGINEER
SMART one Street #2, Box 618
Portland, ME 04106
Phone: (207) 772-3848
Fax: (207) 772-1070

Consultant
MECHANICAL/ELECTRICAL ENGINEER
Burd, Ross + Arbore Consulting Engineers, LLC
183 General George Patton Drive
Franklin, Tennessee 37067
Phone: (615) 754-0017
Fax: 617/924/9339

Consultant
EQUIPMENT PLANNING
183 General George Patton Drive
Franklin, Tennessee 37067
Phone: (615) 376-3114
Fax: (615) 376-3114

Consultant
CONSTRUCTION MANAGER
7 Johnson Wharf
Portland, ME 04106
Phone: (407) 486-8908
Fax: (407) 486-8516

Consultant
Hoffmann
1808 West End Ave. Suite 1400
Nashville, Tennessee 37203
Phone: (615) 321-5591
Fax: (615) 321-5889

11/10/06 Final-issued for Construction
Drawn By: NIP
Scale: 1/8" = 1'-0"

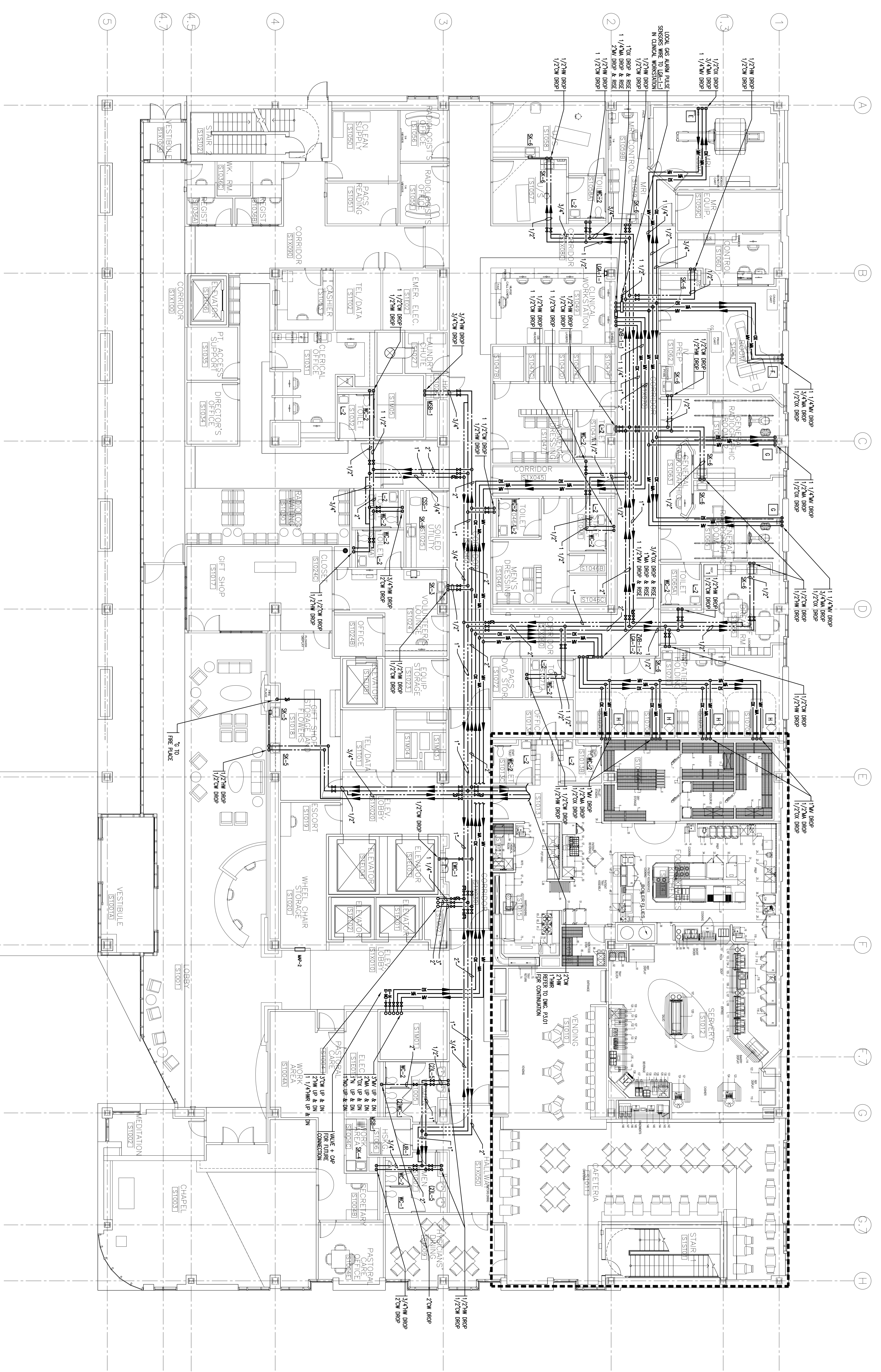
Francis
Coffman

Foley
Hoffmann

Project Title
Mercy Health Core
System of Maine
FORE RIVER SHORT
STAY HOSPITAL



Project Number
F05-4898
Drawing Title and Number
PLUMBING
LEVEL 1 FLOOR PLAN
SUPPLY
P2.01



1 FIRST FLOOR PLAN
A1.01 1/8" = 1'-0"