

Consultant  
Civil Engineer  
Delaney-Hoffman Associates, Inc.  
726 Main Street, Suite 8  
Portland, ME 04101  
Phone: (207) 775-1121  
Fax: (207) 879-0898

Consultant  
ASSOCIATE ARCHITECT/STRUCTURAL ENGINEER  
SMART One State St., Box 618  
Portland, ME 04101  
Phone: (207) 772-3846  
Fax: (207) 772-1070

Consultant  
MECHANICAL/ELECTRICAL ENGINEER  
Boyd, Koo + Arneson Consulting Engineers, LLC  
311 Aerial Street  
Portland, ME 04101  
Phone: (207) 754-0017  
Fax: 617/924-9339

Consultant  
EQUIPMENT PLANNING  
Merrill Associates  
183 General George Patton Drive  
Franklin, Tennessee 37067  
Phone: (615) 376-3114  
Fax: (615) 376-3114

Consultant  
CONSTRUCTION MANAGER  
7 Johnson-Walshway  
Adrian, Michigan 49303  
Phone: (616) 456-8999  
Fax: (401) 456-5516

Consultant  
Interior Design  
Hoffmann Architects, LLC  
1808 West End Ave. Suite 1400  
Portland, ME 04101  
Phone: (615) 321-5591  
Fax: (615) 321-5589

Notes:  
1. It is the responsibility of the Commissioning Manager/General Contractor and all subcontractors to verify the accuracy and accept conditions of prior work by retained trades before proceeding with any work.

Date: 11/10/06  
Drawn By: NJP  
Scale: 1/8" = 1'-0"

Francis

Caufman

Foley

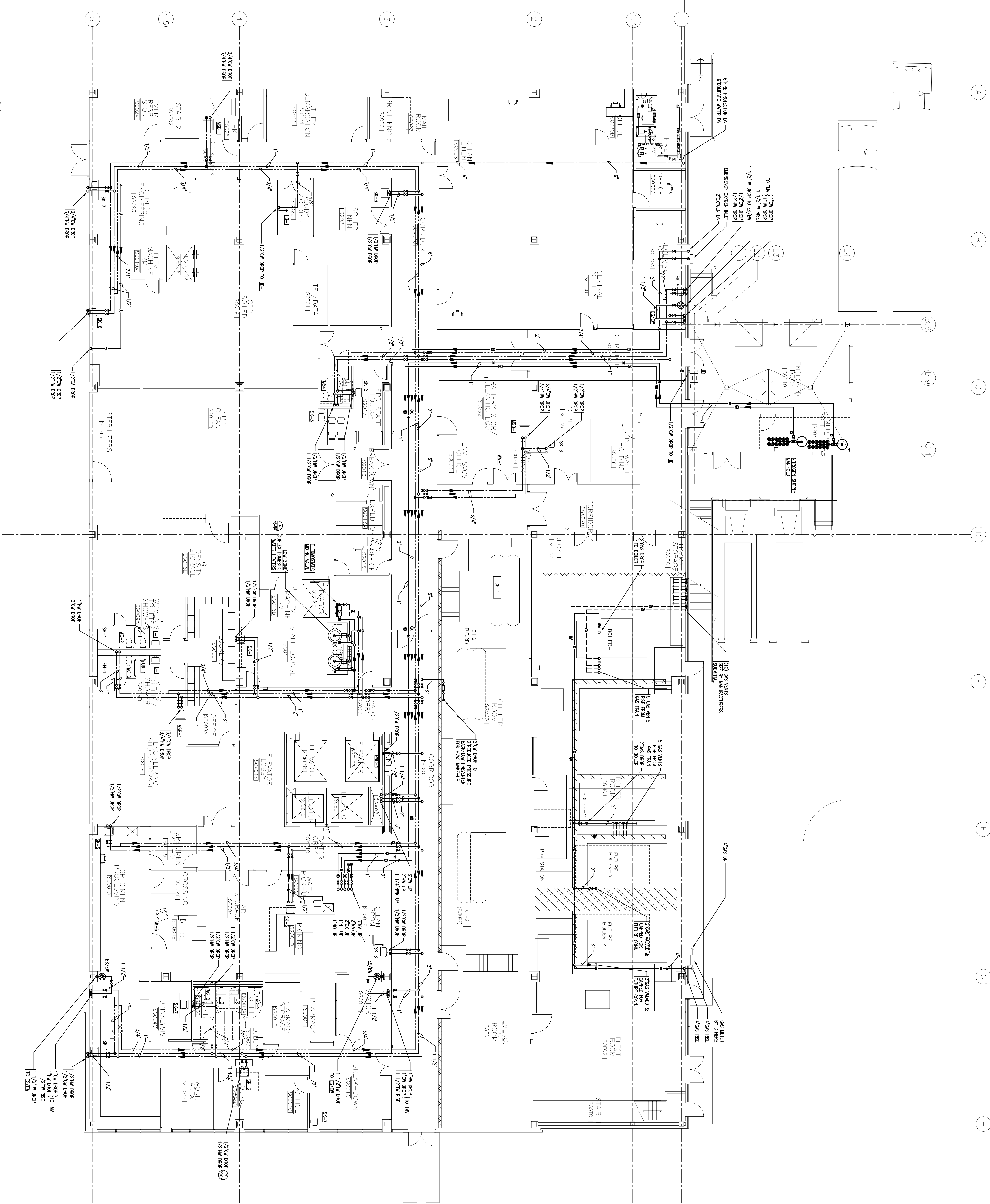
Hoffmann

Project Title  
Mercy Health Core  
System of Maine  
FORE RIVER SHORT  
STAY HOSPITAL



Project Number  
F05-4898

Drawing Title  
PLUMBING  
GROUND FLOOR PLAN  
SUPPLY  
P2.00



1 GROUND FLOOR PLAN  
A1.00 1/8" = 1'-0"