

Consultant
OWNER
 Delaney-Hoffman Associates, Inc.
 725 Main Street, Suite 8
 Portland, Maine 04106
 Phone: (207) 775-1121
 Fax: (207) 879-0898

Consultant
ASSOCIATE ARCHITECT/STRUCTURAL ENGINEER
 SMRT
 One State P.O. Box 618
 Portland, Maine 04104
 Phone: (207) 772-3848
 Fax: (207) 772-1070

Consultant
MECHANICAL/ELECTRICAL ENGINEER
 Boyd, Koo + Aronson Consulting Engineers, LLC
 311 Aesculap Street
 Portland, ME 04101
 Telephone: 724-4201
 Fax: 617-924-9339

Consultant
EQUIPMENT PLANNING
 Equipment Planning, Inc.
 1823 General George Patton Drive
 Franklin, Tennessee 37067
 Phone: (615) 276-3114
 Fax: (615) 276-3114

Consultant
CONSTRUCTION MANAGER
 Construction Management, Inc.
 7 Johnson Walkway
 Providence, Rhode Island 02903
 Phone: (401) 456-8999
 Fax: (401) 456-5516

Consultant
MECHANICAL ENGINEER
 Innon Services, LLC
 1808 West End Ave. Suite 1400
 Portland, ME 04102
 Phone: (615) 321-5591
 Fax: (615) 321-5589

11/10/06 Find-Issued for Construction
 Drawn By: NTP
 Scale: 1/8" = 1'-0"

Francis

Caulman

Foley

Hoffmann

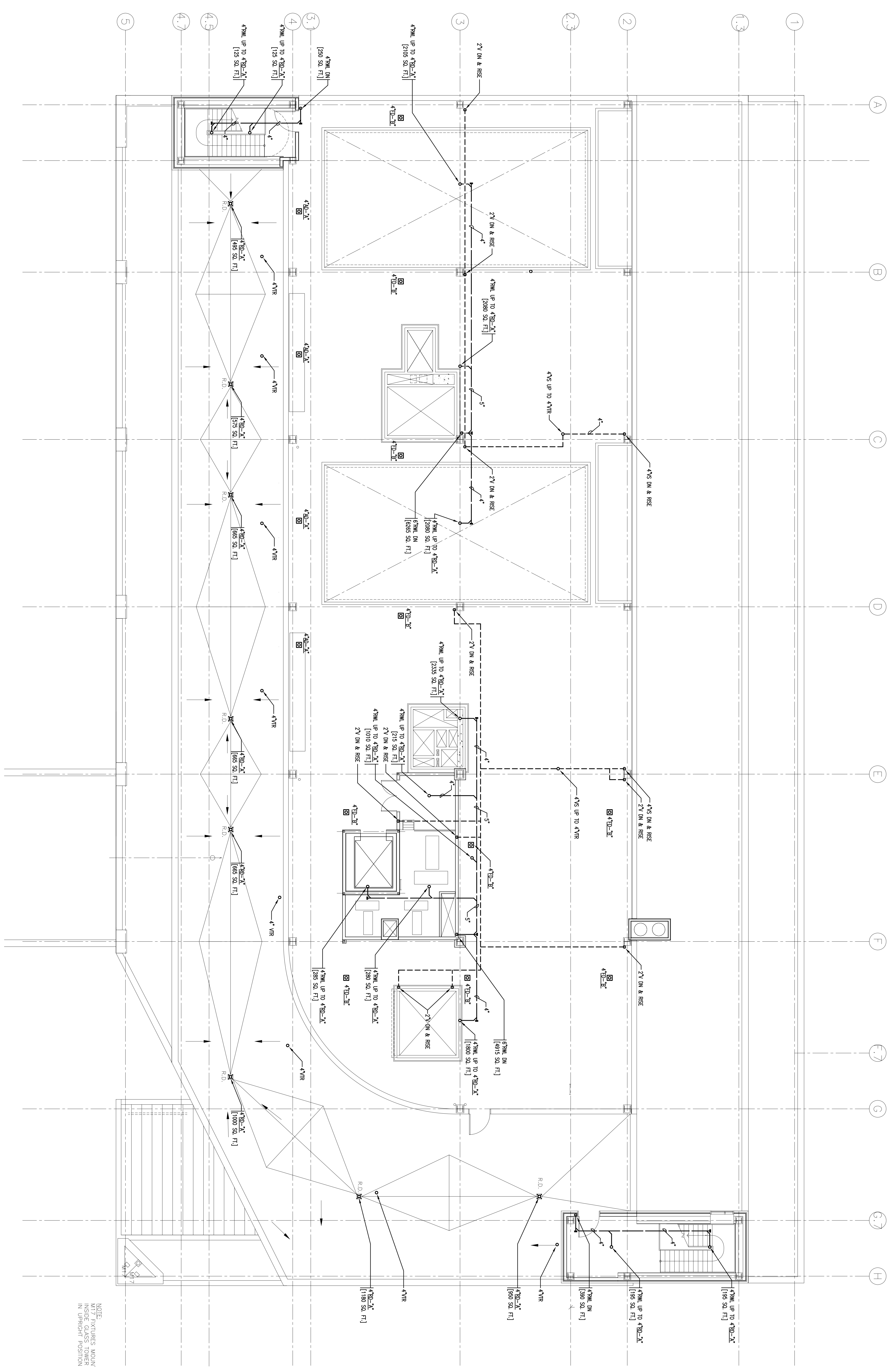


Mercy Health Core
 System of Maine
 FORE RIVER SHORT
 STAY HOSPITAL

Project Title
 Fore River Short Stay Hospital

Project Number
 F05-4898

Drawing Title
 PLUMBING
 PENTHOUSE
 DRAINAGE
P1.05



NOTE:
 * REQUIRES MOUNT
 INSIDE GLASS TOWER
 IN UPRIGHT POSITION