

**Consultant**  
**MECHANICAL/ELECTRICAL ENGINEER**  
 Delaney-Hoffmann Associates, Inc.  
 725 Main Street, Suite 8  
 Philadelphia, PA 19103  
 Phone: (207) 775-1121  
 Fax: (207) 879-0898

**Consultant**  
**ASSOCIATE ARCHITECT/STRUCTURAL ENGINEER**  
 SHoP Architecture  
 1000 Walnut Street, 2nd Floor  
 Philadelphia, PA 19106  
 Phone: (207) 772-3846  
 Fax: (207) 772-1070

**Consultant**  
**MECHANICAL/ELECTRICAL ENGINEER**  
 B&B, Inc. + Architects Consulting Engineers, LLC  
 311 Aerial Street  
 Philadelphia, PA 19106  
 Phone: (215) 261-2789  
 Fax: (215) 261-2789

**Consultant**  
**EQUIPMENT PLANNING**  
 Equipment Planning  
 1833 General George Patton Drive  
 Franklin, Tennessee 37067  
 Phone: (615) 376-3114  
 Fax: (615) 376-3114

**Consultant**  
**CONSTRUCTION MANAGER**  
 7 Johnson Walkway  
 Providence, RI 02903  
 Phone: (401) 456-8999  
 Fax: (401) 456-5516

**Consultant**  
**Interior Design**  
 Innon Solutions, LLC  
 1808 West End Ave, Suite 1400  
 Philadelphia, PA 19103  
 Phone: (615) 321-5591  
 Fax: (615) 321-5589

**11/10/06 Final-issued for Construction**  
 Drawn By: NJP  
 Scale: 1/8" = 1'-0"

**Francis**

**Cauffman**

**Foley**

**Hoffmann**

**Project Title**  
 Mercy Health Core  
 System of Maine  
 FORE RIVER SHORT  
 STAY HOSPITAL

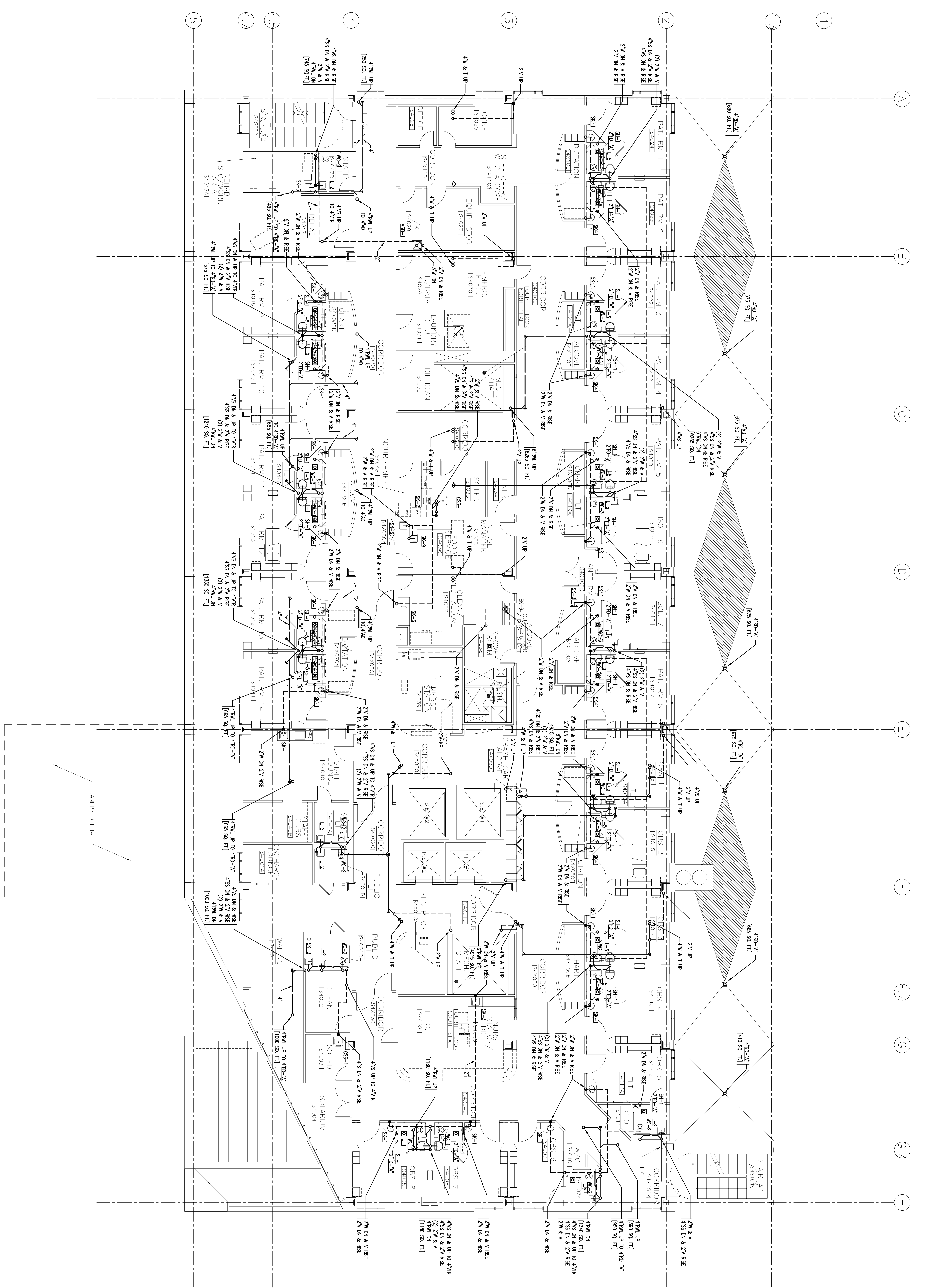
**Project Title**  
 Mercy Health Core  
 System of Maine  
 FORE RIVER SHORT  
 STAY HOSPITAL

**Project Number**  
 F05-4898

**Drawing Title and Number**  
 PLUMBING  
 LEVEL 4 FLOOR PLAN  
 DRAINAGE  
**P1.04**

**Project Number**  
 F05-4898

**Drawing Title and Number**  
 PLUMBING  
 LEVEL 4 FLOOR PLAN  
 DRAINAGE  
**P1.04**



J:\A083\_2523000\_CWP\PLUMBING\4TH.DWG 11-08-2006 15:44:20 - p109