

Consultant
Civil/Structural
Delon-Hoffman Associates, Inc.
778 Main Street, Suite 816
Portland, ME 04101
Phone: (207) 775-1121
Fax: (207) 879-0898

Consultant
ASSOCIATE ARCHITECT/STRUCTURAL ENGINEER
SMART Engineering
1000 State Street, Suite 618
Portland, ME 04101
Phone: (207) 772-5846
Fax: (207) 772-1070

Consultant
MECHANICAL/ELECTRICAL ENGINEER
Burd, Bost + Aronson Consulting Engineers, LLC
311 Aerial Street
Portland, ME 04101
Phone: (207) 724-0017
Fax: (207) 724-9339

Consultant
EQUIPMENT PLANNING
Sloan Equipment Planning
1833 General George Patton Drive
Franklin, Tennessee 37067
Phone: (615) 776-3114
Fax: (615) 276-3114

Consultant
CONSTRUCTION MANAGER
CONSTRUCTION MANAGEMENT
7 Johnson Wharf
Portland, ME 04101
Phone: (407) 466-8906
Fax: (407) 466-5516

Consultant
Interior
Hoffmann Architects, LLC
1808 West End Ave. Suite 1400
Portland, ME 04101
Phone: (615) 321-5591
Fax: (615) 321-5889

Notes
11/10/06 Final-issued for Construction
Drawn By: NJP
Scale: 1/8" = 1'-0"

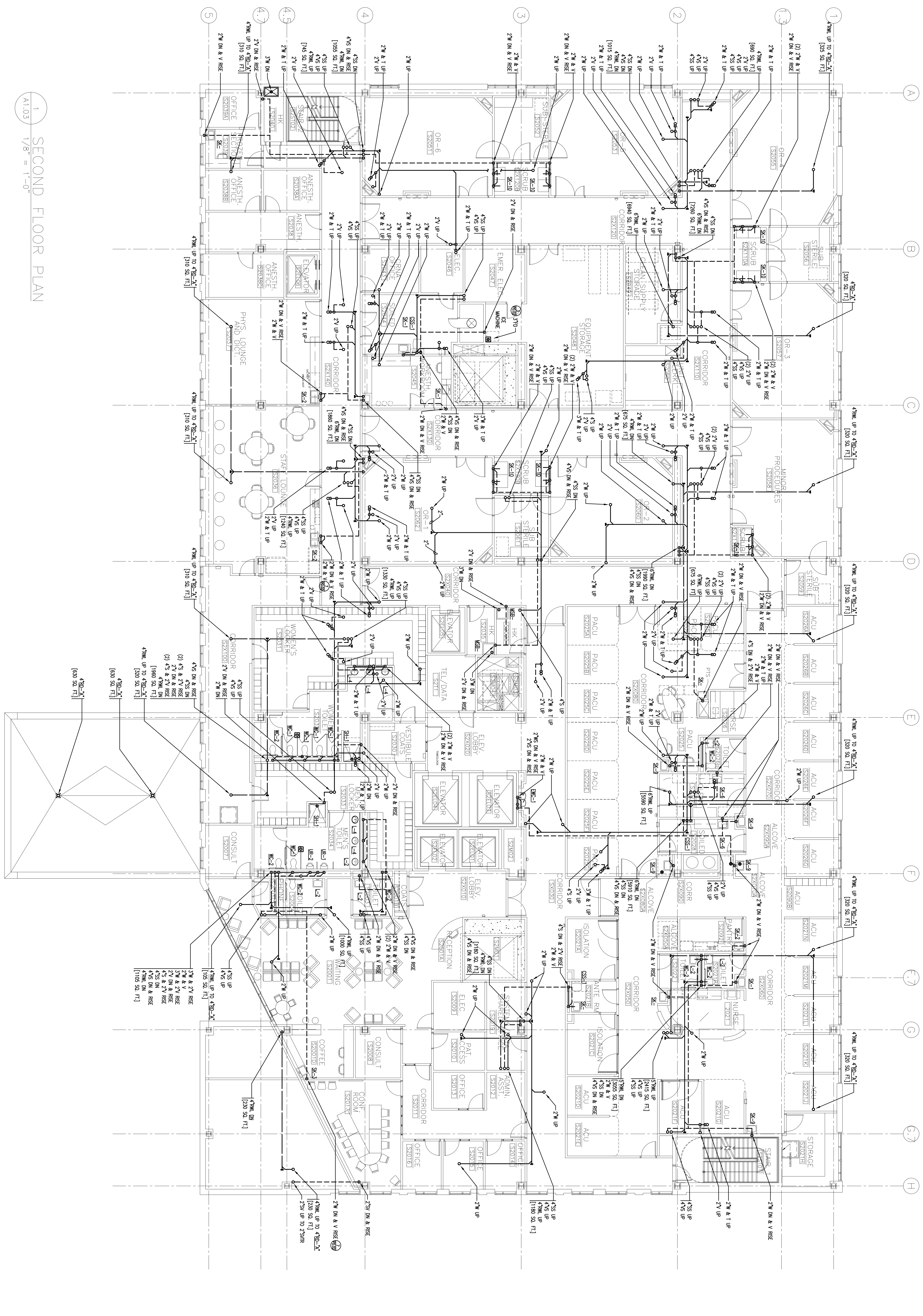
Francis
Coffman

Foley
Hoffmann

Project Title
Mercy Health Core
System of Maine
FORE RIVER SHORT
STAY HOSPITAL



Project Number
F05-4898
Drawing Title and Number
PLUMBING
LEVEL 2 FLOOR PLAN
DRAINAGE
P1.02



1 SECOND FLOOR PLAN
A1.03 1/8" = 1'-0"