

Consultant
MECHANICAL/ELECTRICAL ENGINEER
 Daniel-Hoffman Associates, Inc.
 726 Main Street, Suite 805
 Philadelphia, PA 19103
 Phone: (207) 775-1121
 Fax: (207) 879-0898

Consultant
ASSOCIATE ARCHITECT/STRUCTURAL ENGINEER
 SHoP Architecture
 1000 Locust Street, Box 618
 Philadelphia, PA 19106
 Phone: (207) 772-3846
 Fax: (207) 772-1070

Consultant
MECHANICAL/ELECTRICAL ENGINEER
 Bond, Bost & Aronson Consulting Engineers, LLC
 311 Arsenal Street
 Philadelphia, PA 19106
 Phone: (215) 261-2789
 Fax: 617/924/3239

Consultant
EQUIPMENT PLANNING
 Equipment Planning
 1893 General George Patton Drive
 Franklin, Tennessee 37067
 Phone: (615) 376-3114
 Fax: (615) 376-3114

Consultant
CONSTRUCTION MANAGER
 Construction Manager
 7 Johnson Walkway
 Philadelphia, PA 19103
 Phone: (401) 456-8999
 Fax: (401) 456-5516

Consultant
MECHANICAL/ELECTRICAL ENGINEER
 Inman Soderstrom, LLC
 1808 West End Ave. Suite 1400
 Philadelphia, PA 19103
 Phone: (610) 321-5591
 Fax: (610) 321-5889

Client
 Mercy Health Core
 Fore River Short Stay Hospital
 11/10/06 Final-Issued for Construction
 Drawn By: NJP
 Scale: 1/8" = 1'-0"

Francis

Caufman

Foley

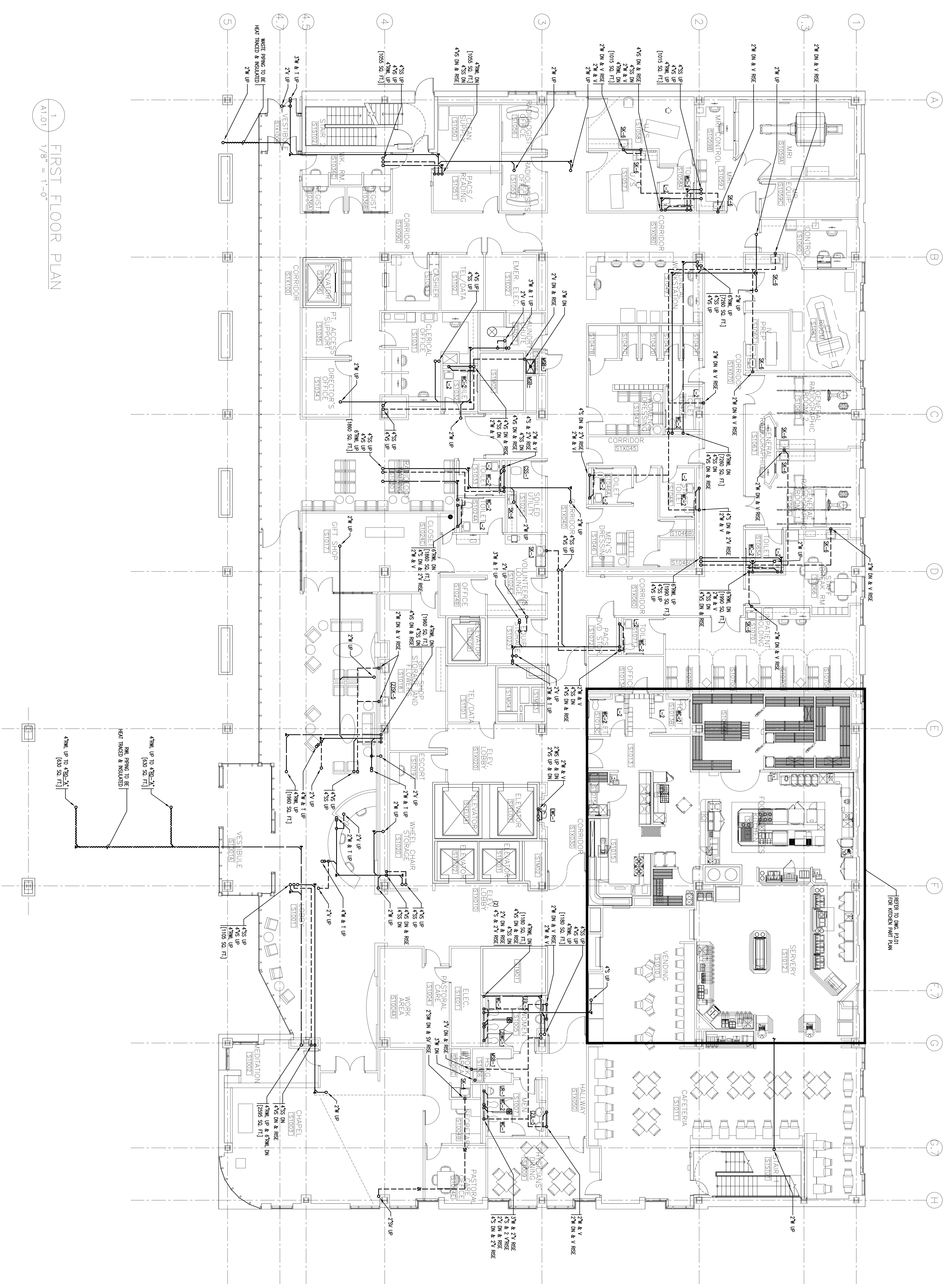
Hoffmann



Mercy Health Core
 System of Maine
 FORE RIVER SHORT
 STAY HOSPITAL

Project Title
 2120 Arch Street
 Philadelphia, PA 19103
 Project No. 215-568-8250

Project Number
 F05-4898
 Drawing Title and Number
 PLUMBING
 LEVEL 1 FLOOR PLAN
 DRAINAGE
P1.01



1 FIRST FLOOR PLAN
 1/8" = 1'-0"