

Consultant  
 Mechanical/Electrical/Plumbing  
 Design-Construct  
 DeLong-Hoffman Associates, Inc.  
 726 Leon Street, Suite 8  
 Jacksonville, Florida 32202  
 Phone (207) 775-1121  
 Fax (207) 879-0898

Consultant  
 ASPECT ARCHITECT/STRUCTURAL ENGINEER  
 5000 North State St., Box 618  
 Portland, Maine 04106  
 Phone (207) 772-5846  
 Fax (207) 772-1070

Consultant  
 MECHANICAL/ELECTRICAL ENGINEER  
 Bond, Rog + Aronson Consulting Engineers, LLC  
 311 Aerial Street  
 Portland, Maine 04101  
 Phone (207) 754-0017  
 Fax 6179242339

Consultant  
 EQUIPMENT PLANNING  
 Equipment Planning  
 183 General George Patton Drive  
 Franklin, Tennessee 37067  
 Phone (615) 376-3114  
 Fax (615) 376-5516

Consultant  
 CONSTRUCTION MANAGER  
 Construction Manager  
 7 Johnson Way  
 Portland, Maine 04106  
 Phone (401) 456-8998  
 Fax (401) 456-5516

Consultant  
 GEOTECHNICAL ENGINEER  
 Geotechnical Engineering  
 1808 West End Ave. Suite 1400  
 Portland, Maine 04106  
 Phone (615) 321-5591  
 Fax (615) 321-5589

It is the responsibility of the Construction Manager/General Contractor and all subcontractors to verify the accuracy and accept conditions of prior work by retained trades before proceeding with any work.

Date

11/10/06 Final-Issued for Construction

Drawn By

NJP

Scale

NONE

Francis

Cauffman

Foley

Hoffmann

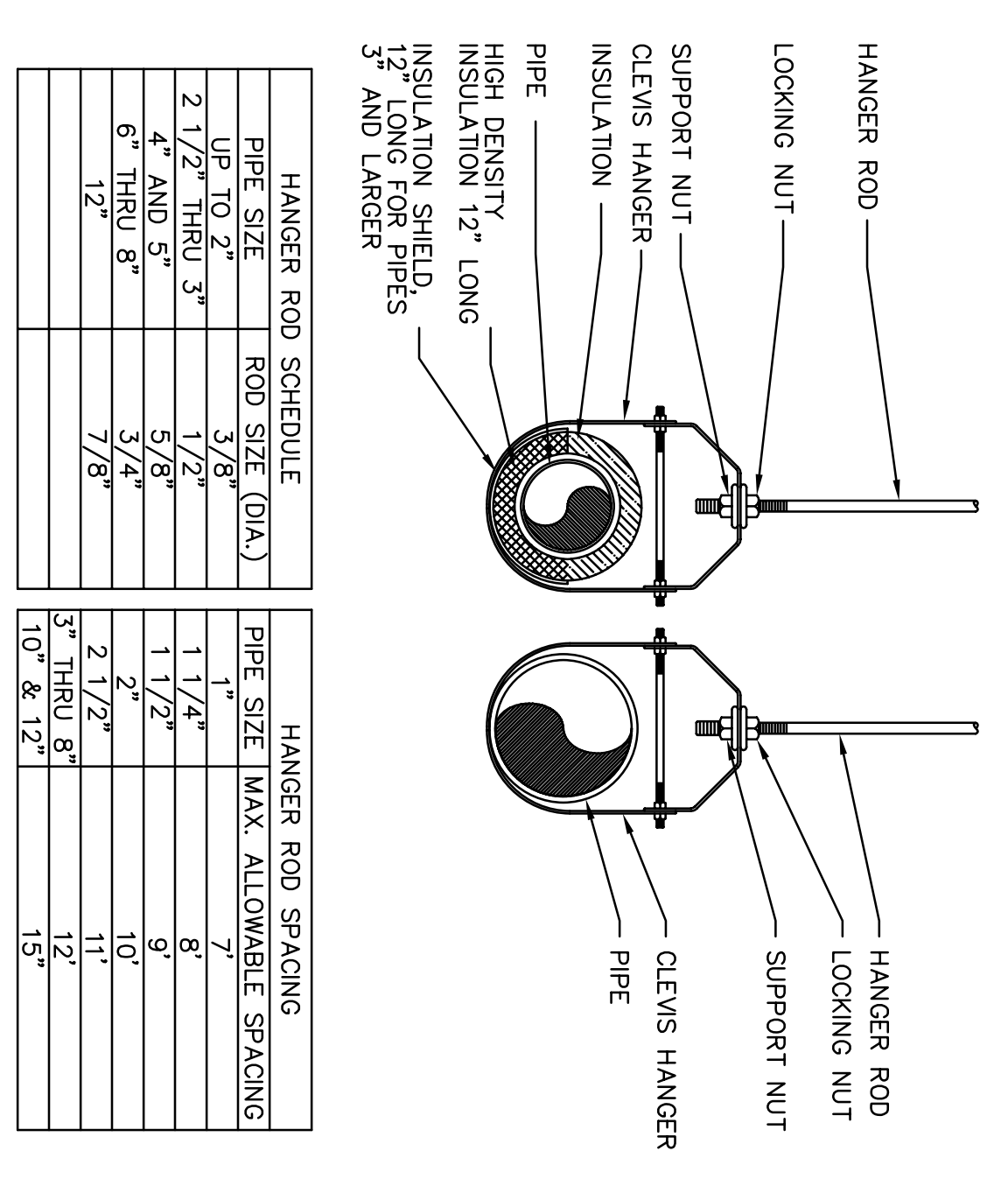
Project Location  
 2120 Ash Street  
 Philadelphia, PA 19103  
 Project No.  
 215-58-8250

Mercy Health Core  
 System of Maine  
 FORE RIVER SHORT  
 STAY HOSPITAL



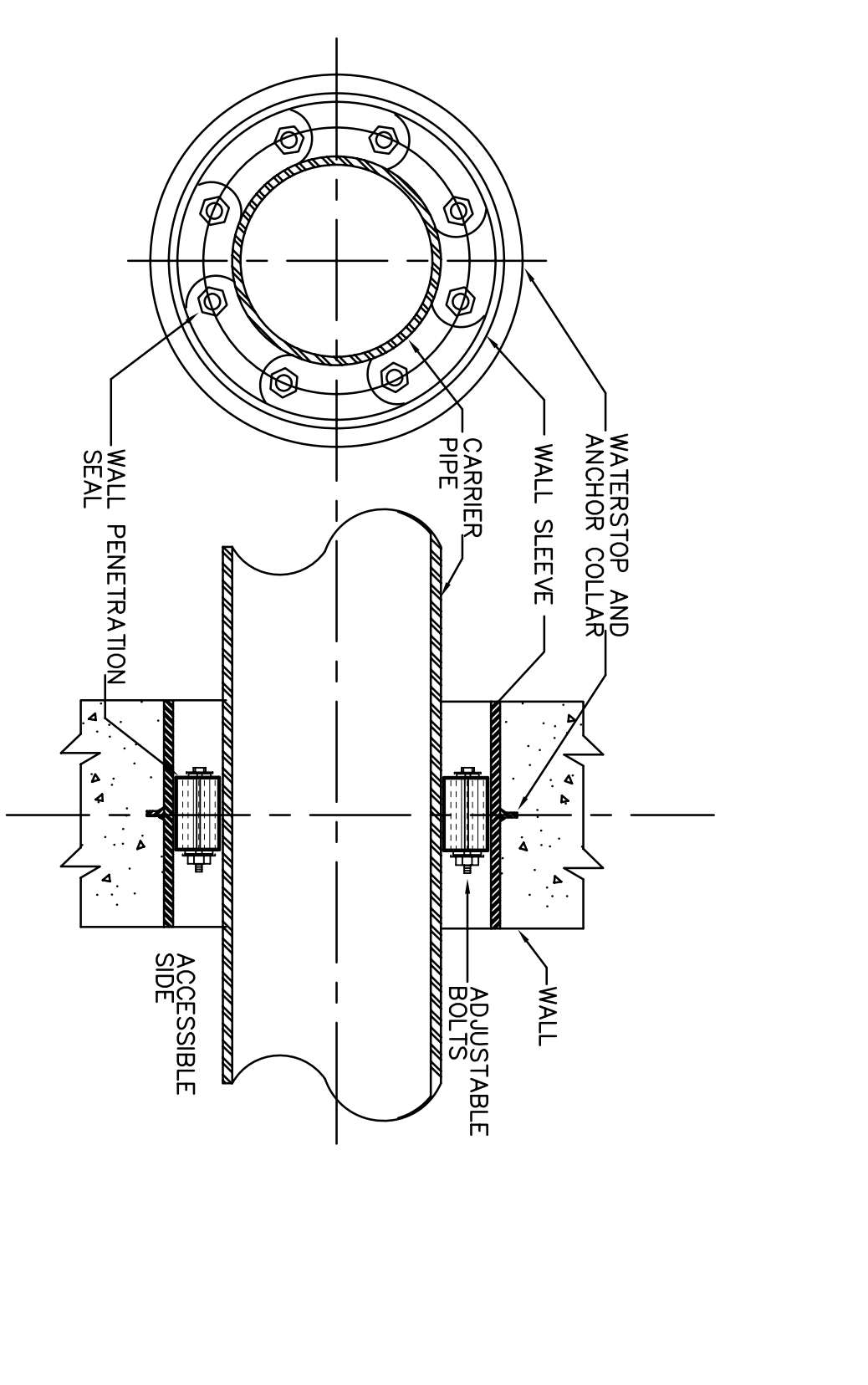
Project Number  
 F05-4898  
 Drawing Title and Number  
 PLUMBING  
 DETAIL SHEET 2

P0.03



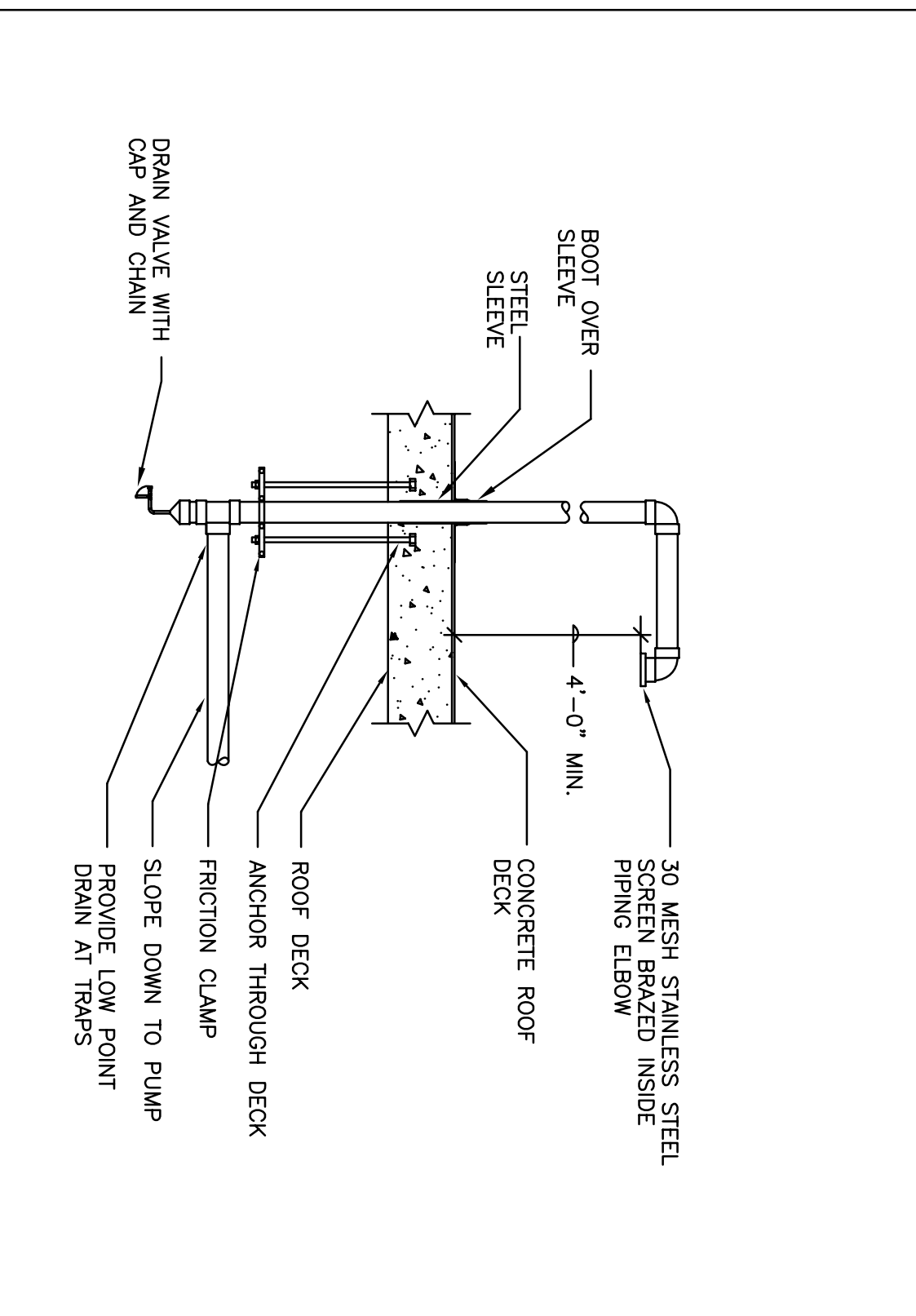
1 PLUMBING PIPE HANGER INSTALLATION DETAIL

2 TYPICAL METHODS OF SECURING HANGER

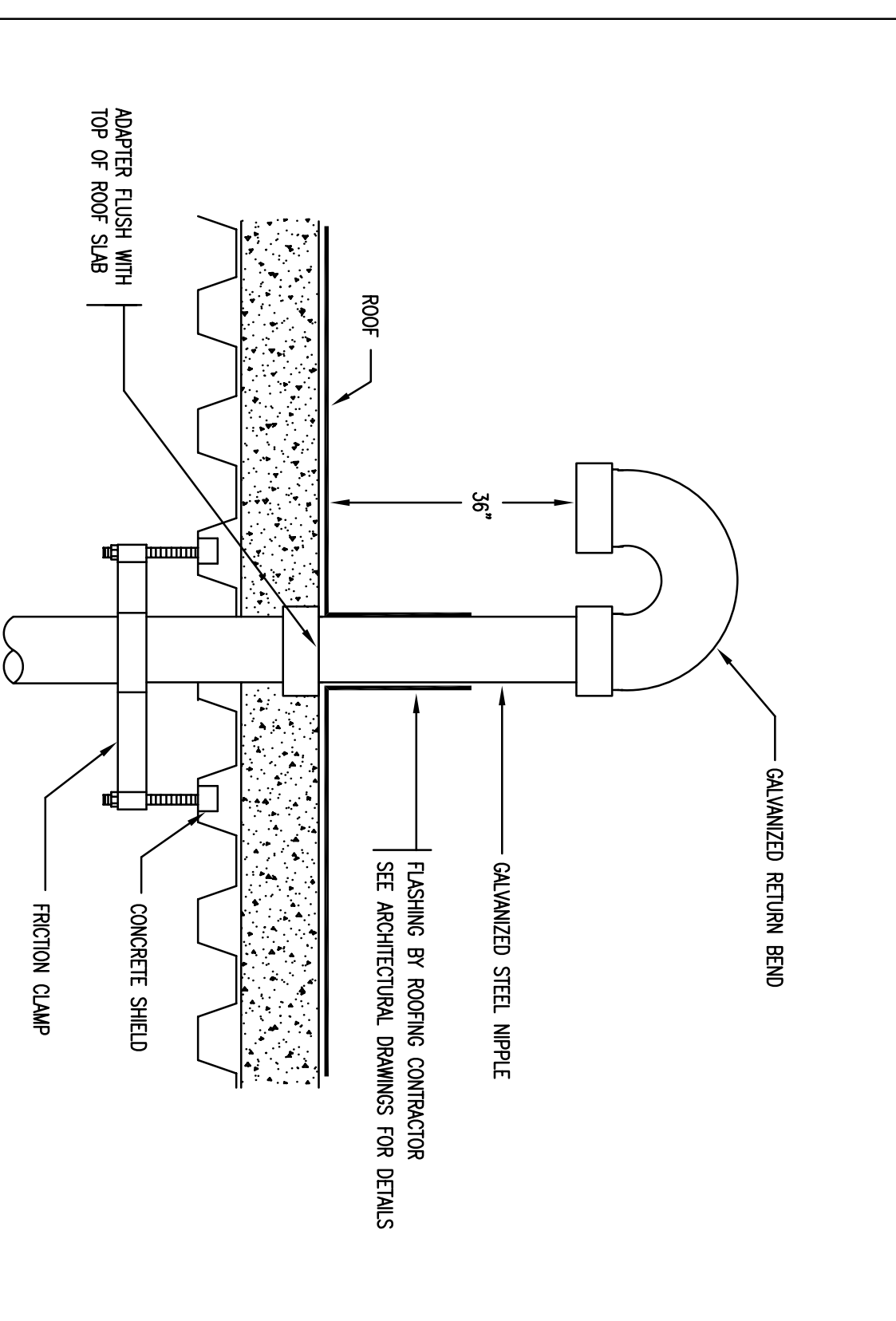


5 WATER TIGHT WALL PENETRATION FOR PIPES

6 VACUUM EXHAUST THROUGH ROOF



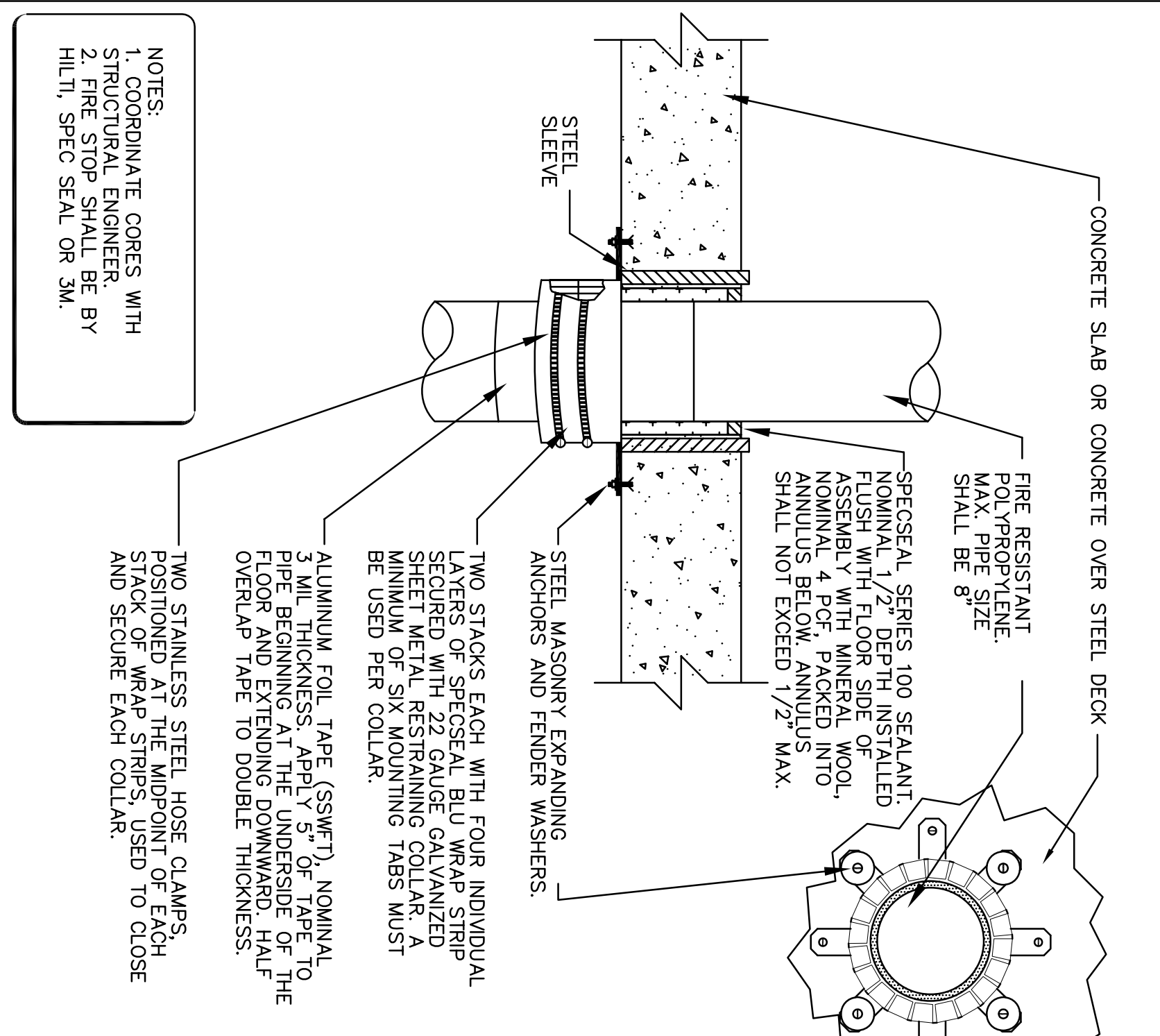
7 DETAIL OF ROOF TERMINAL ASSEMBLY



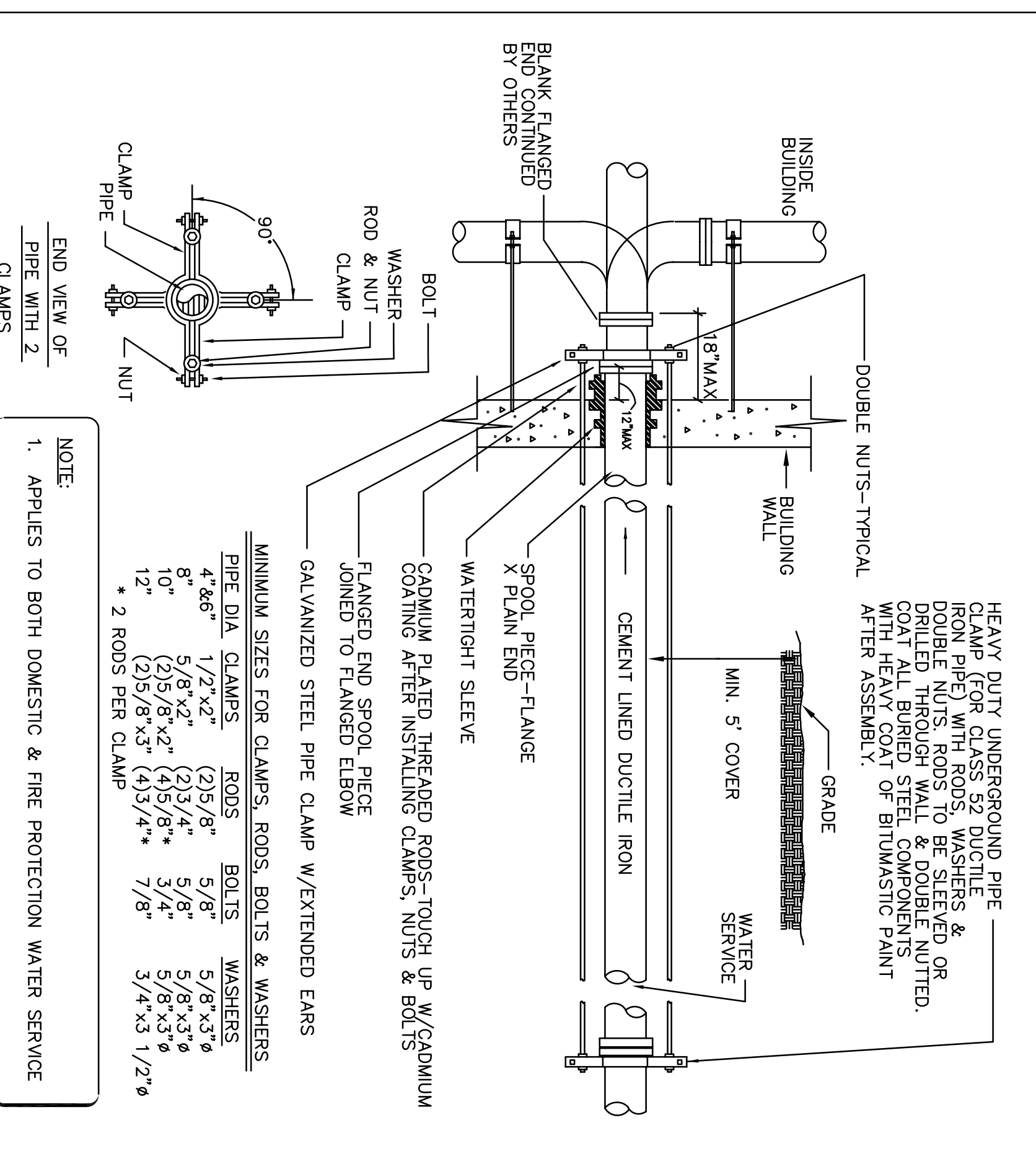
NOTES:

1. SOIL WATER AND CONDENSATOR PRESS SHALL BE SUPPORTED
2. ALL HANGER PARTS SHALL BE HEAVY ZINC CHROMIUM AND USED INSULATION SHEETS FOR COLD LINES AND PROTECTION SHOULD FOR HOT LINES.

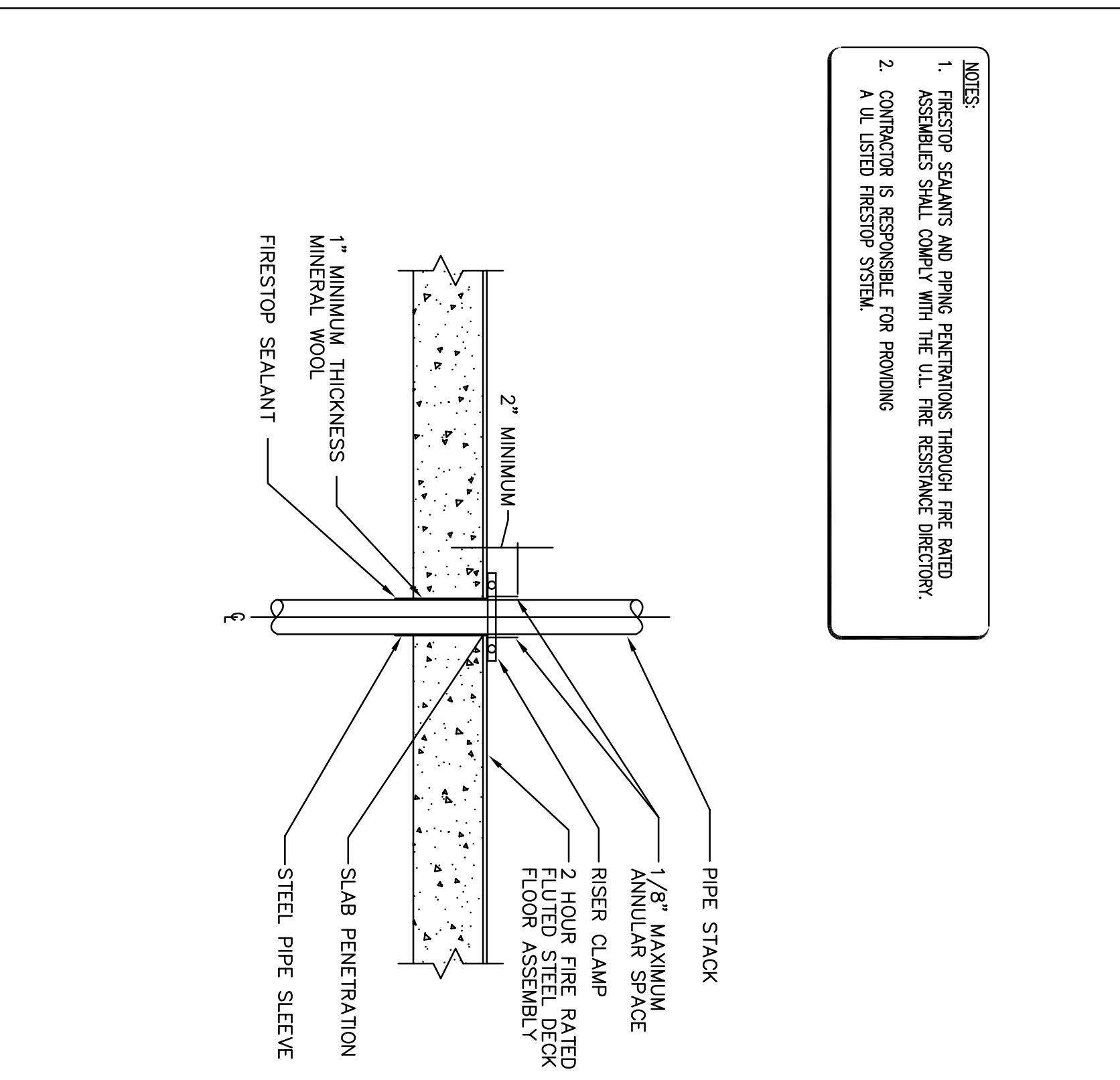
HANGER ROD SCHEDULE	
PIPE SIZE	ROD SIZE
UP TO 1/2"	3/8" DIA
1/2" TO 3/4"	3/8" DIA
3/4" AND 1"	5/8"
1" AND 1 1/4"	5/8"
1 1/2" AND 2"	7/8"



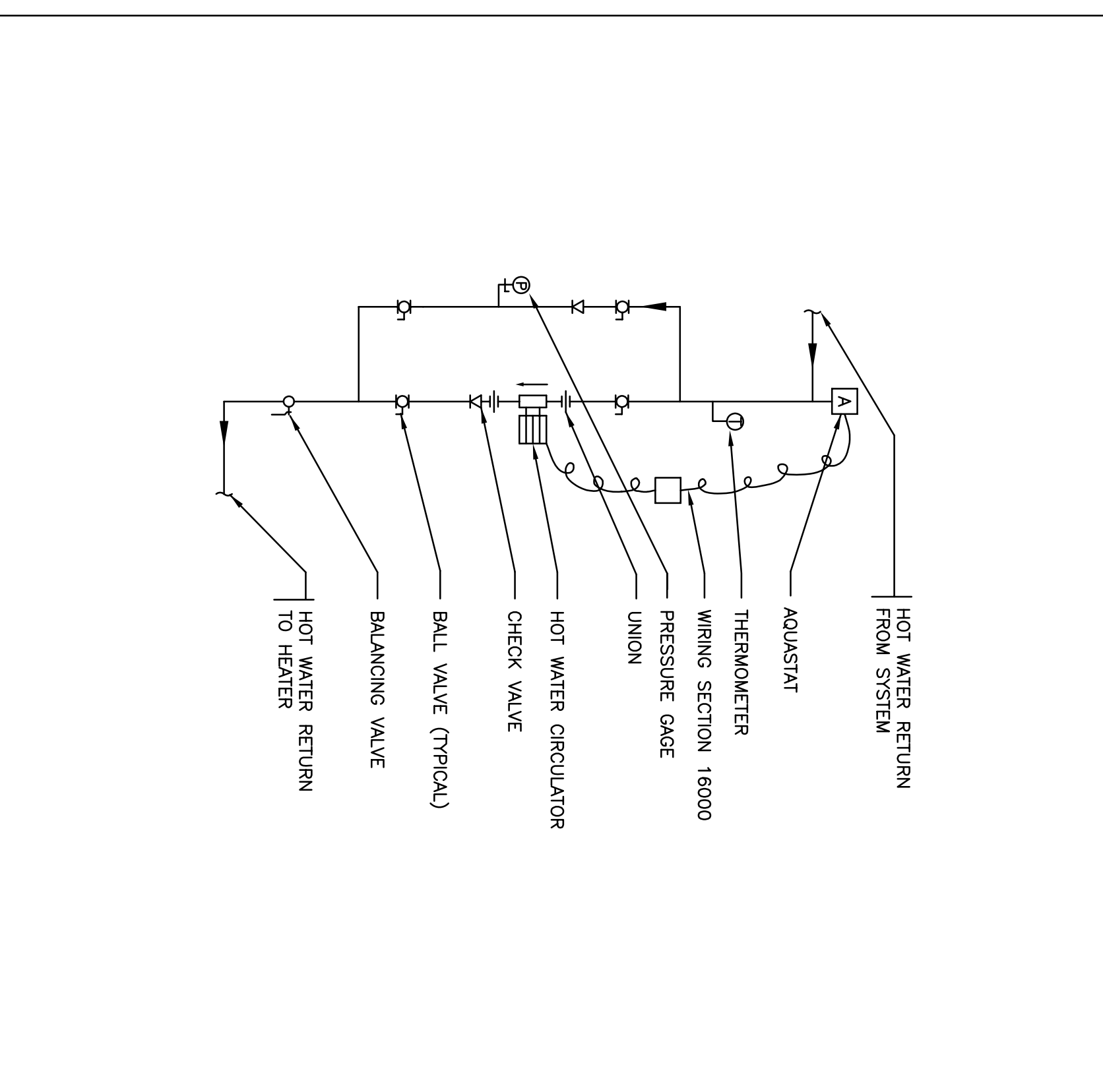
8 POLYPROPYLENE PIPING INSTALLATION THROUGH SLAB



9 DETAIL OF WATER SERVICE THROUGH FOUNDATION WALL



10 RISER SUPPORT SLEEVE DETAIL



11 SPRING DIAGRAM AT HOT WATER CIRCULATOR