

Consultant
 CIVIL ENGINEER
 DeLuca-Hoffman Associates, Inc.
 778 Main Street, Suite 8
 South Portland, ME 04106
 Phone: (207) 775-1121
 Fax: (207) 879-0896

Consultant
 ASSOCIATE ARCHITECT/STRUCTURAL ENGINEER
 SMRT
 144 Fore Street P.O. Box 618
 Portland, Maine 04104
 Phone: (207) 772-3846
 Fax: (207) 772-1070

Consultant
 MECHANICAL/ELECTRICAL ENGINEER
 Bard, Rao + Athanas Engineering Engineers, LLC
 The Arsenal on the Charles
 311 Arsenal Street
 Watertown, MA 02472-5789
 Phone: (617) 254-0018
 Fax: (617) 924-9339

Consultant
 EQUIPMENT PLANNING
 Gene Burton & Associates
 1893 General George Patton Drive
 Franklin, Tennessee 37067
 Phone: (615) 376-3100
 Fax: (615) 376-3114

Consultant
 CONSTRUCTION MANAGER
 Gibbons Building Company
 7 Jackson Walkway
 Providence, Rhode Island 02903
 Phone: (401) 456-5905
 Fax: (401) 456-5516

Consultant
 FOOD SERVICE
 Inman Foodservice, LLC
 1808 West End Ave, Suite 1400
 Nashville, TN 37203
 Phone: (615) 321-5591
 Fax: (615) 321-5689

It is the responsibility of the Construction Manager/General Contractor and all Sub-Contractors to verify all dimensions and accept conditions of prior work by related trades before proceeding with any work.

Date
 11/10/06 Final-Issued for Construction
 Drawn By
 FA
 Scale
 N.T.S.

Francis

Cauffman

Foley

Hoffmann

Francis Cauffman
 Architects Ltd. 2120 Arch Street
 Philadelphia, PA 19103
 215-568-8250

Project Title
 Mercy Health Care
 System of Maine

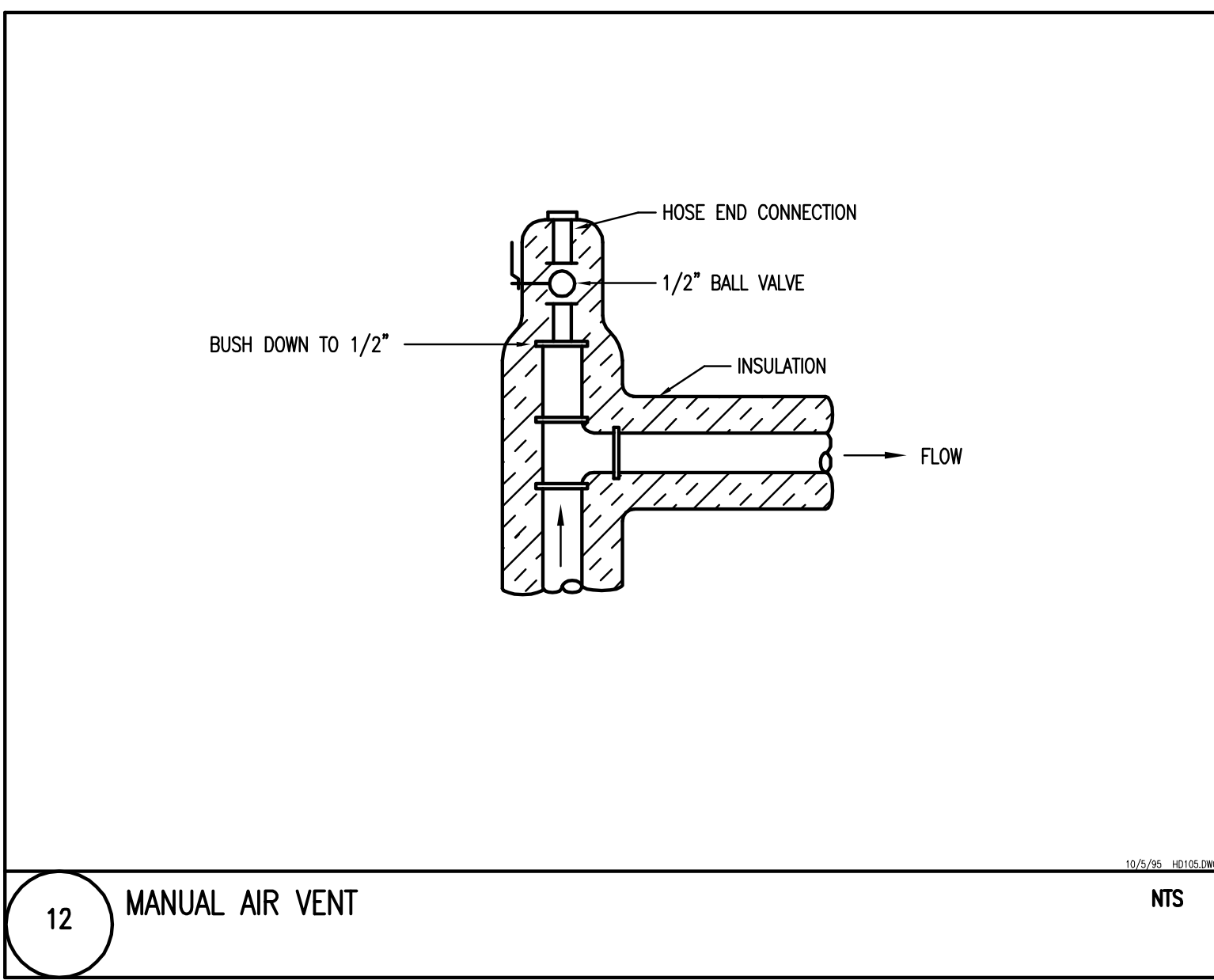
FORE RIVER SHORT
 STAY HOSPITAL



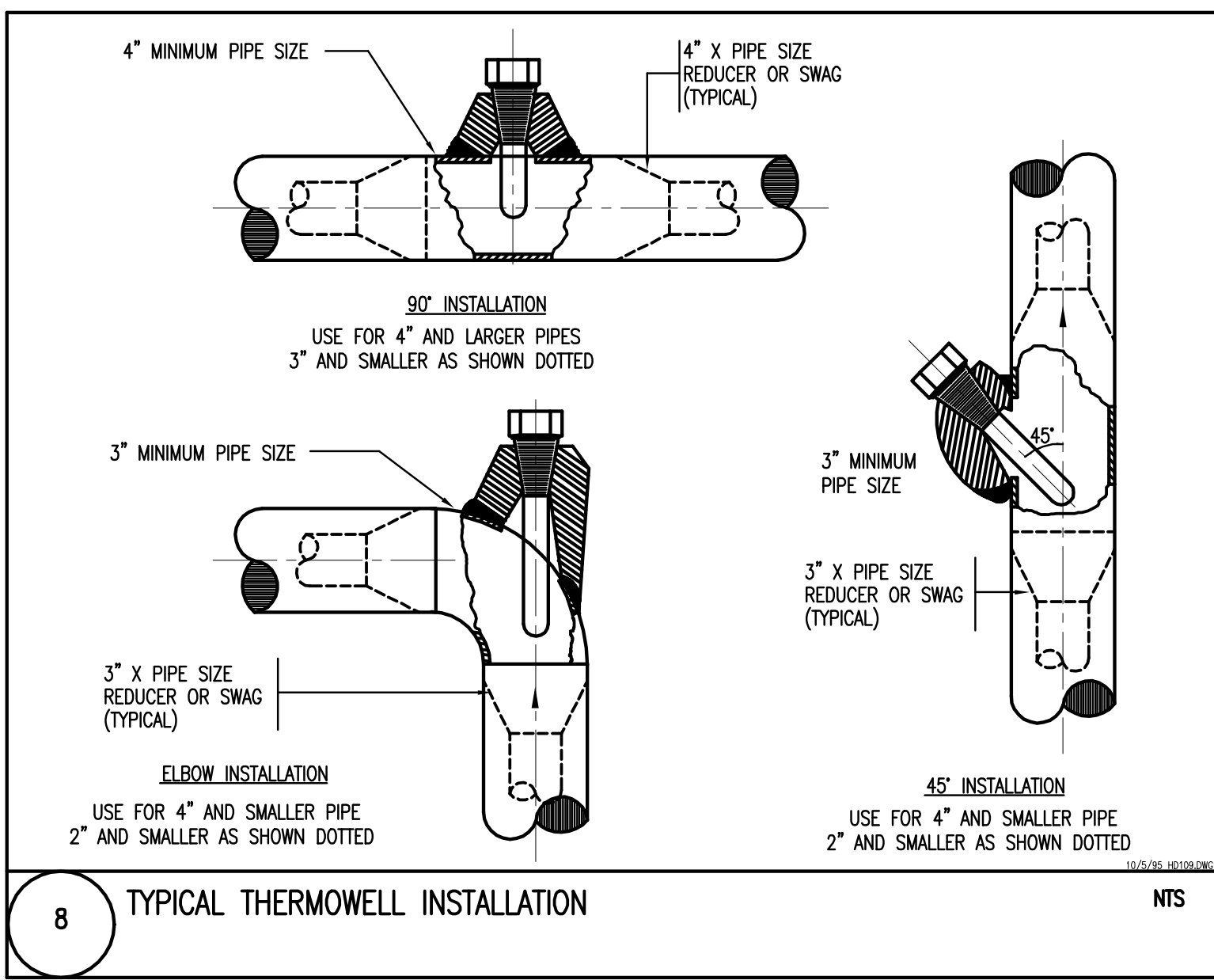
Project Number
 F05-4898

Drawing Title and Number
 HVAC
 STANDARD DETAILS

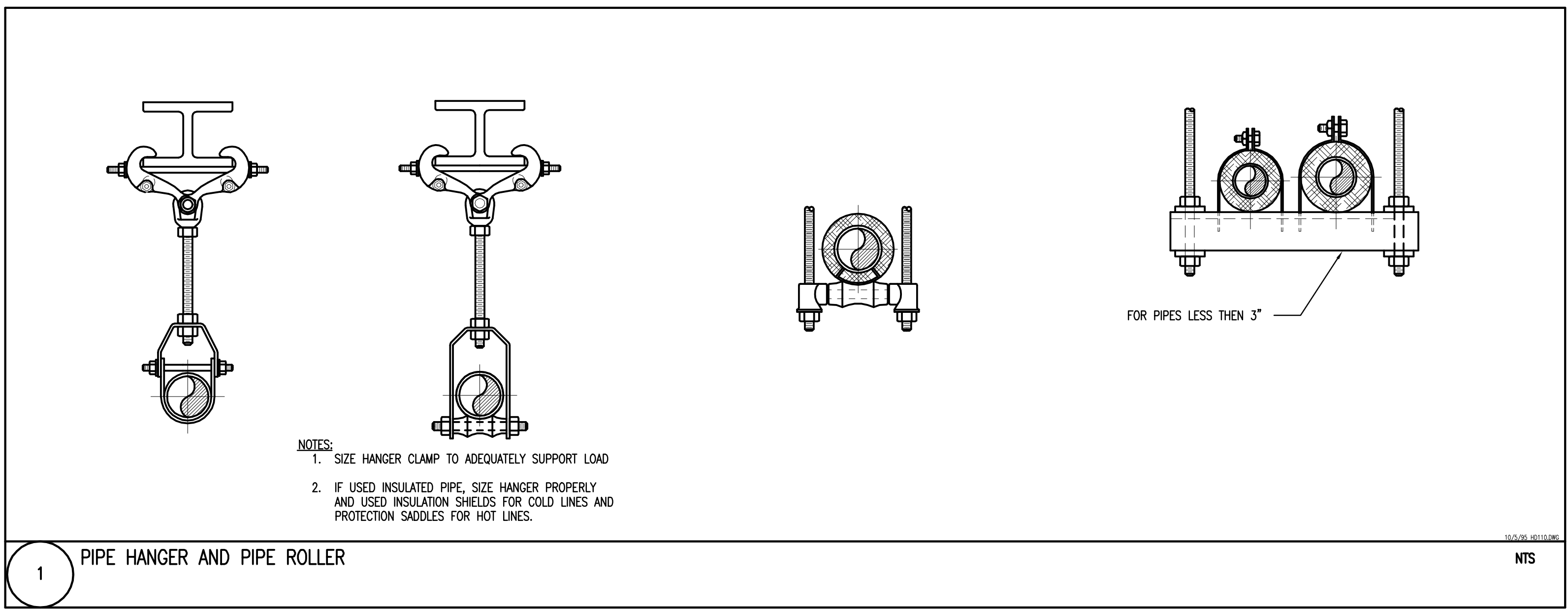
H5.02



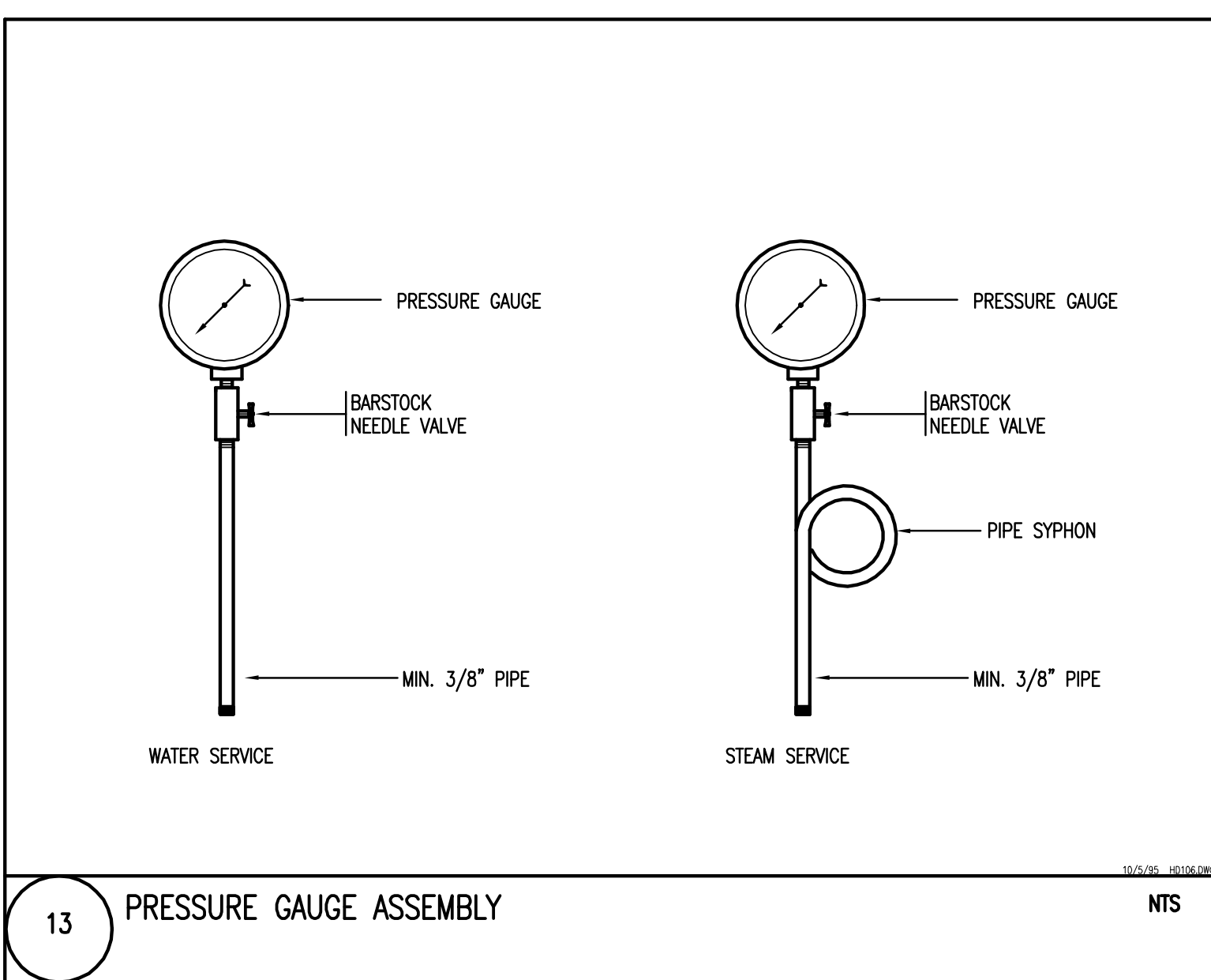
12 MANUAL AIR VENT NTS



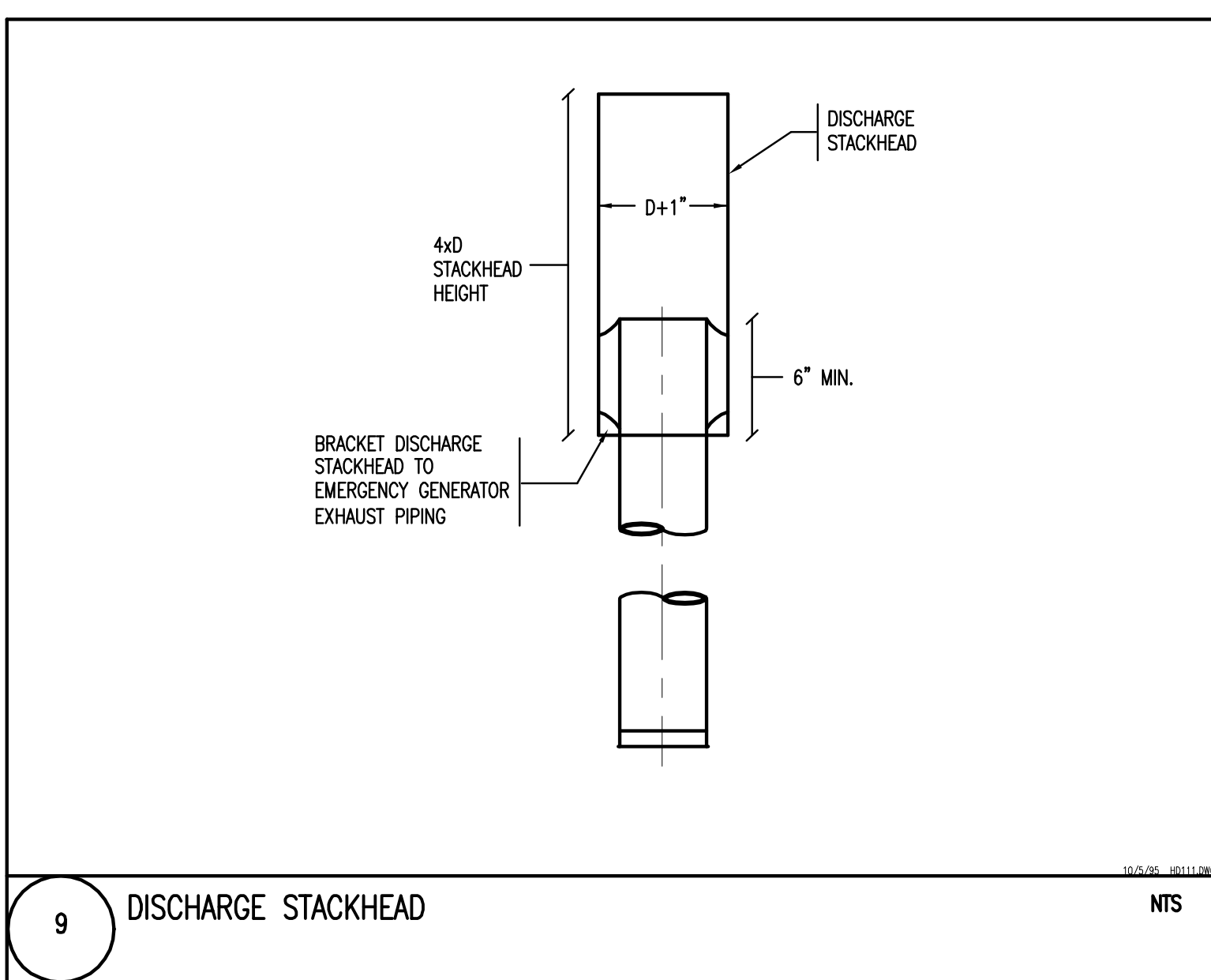
8 TYPICAL THERMOWELL INSTALLATION NTS



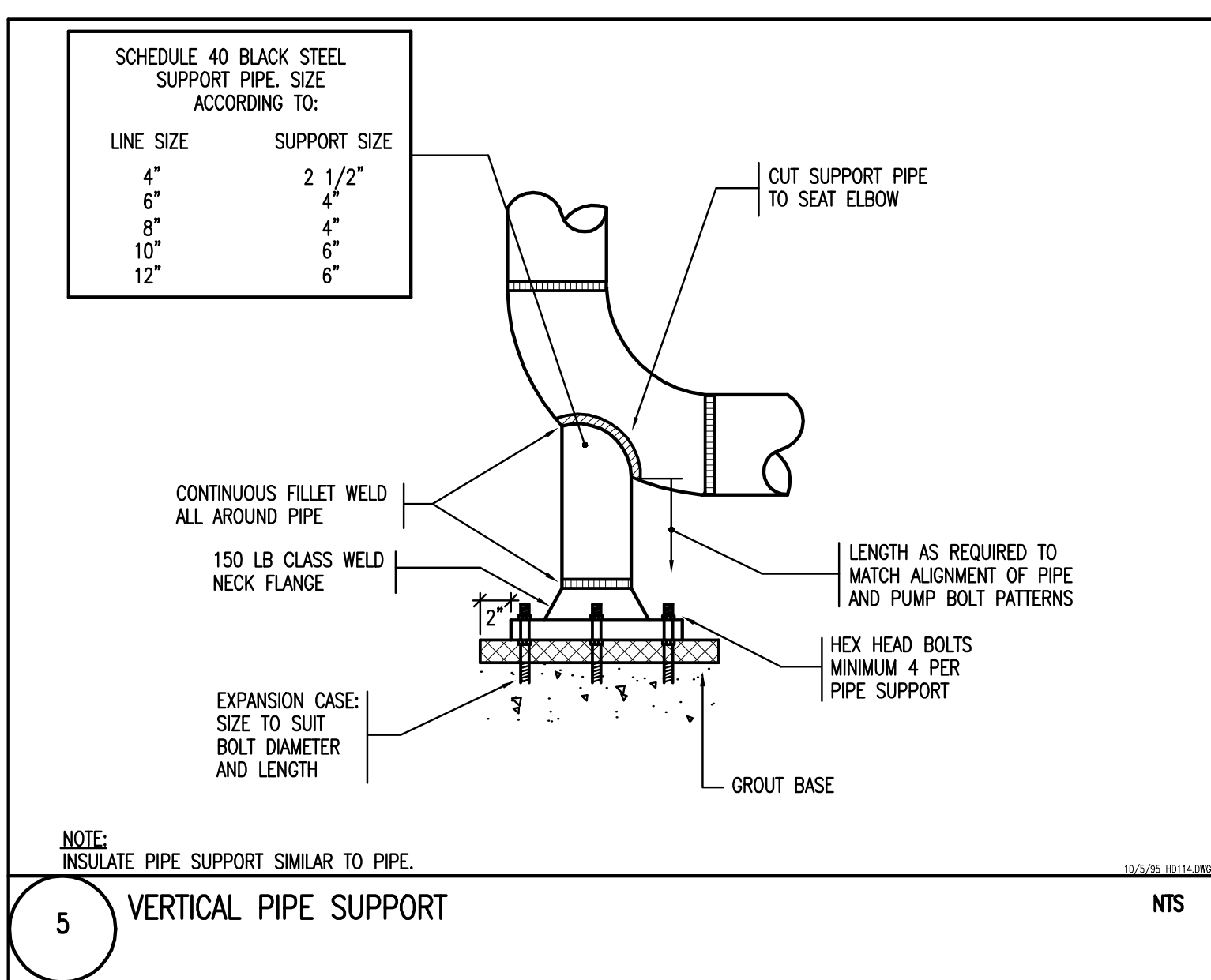
1 PIPE HANGER AND PIPE ROLLER NTS



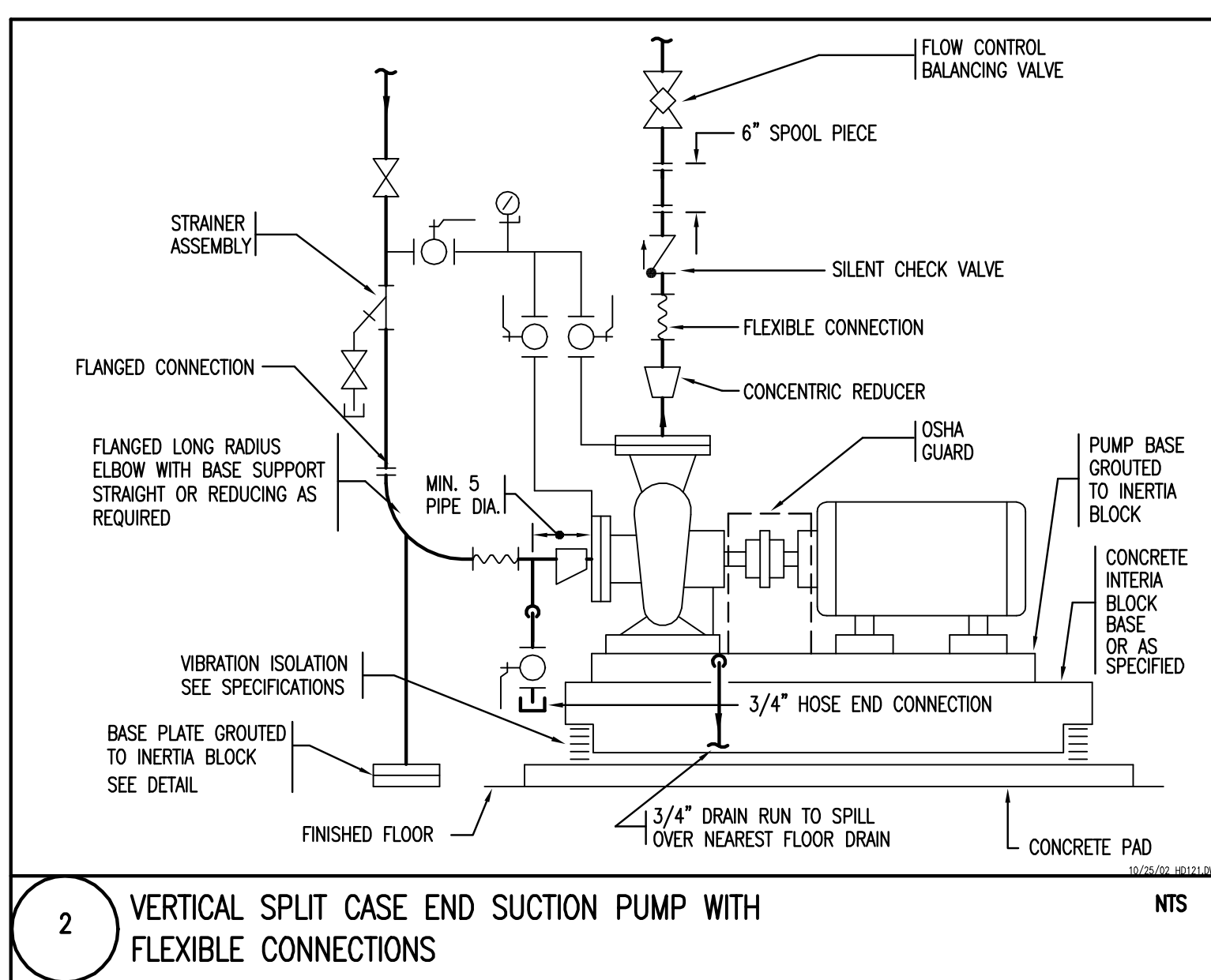
13 PRESSURE GAUGE ASSEMBLY NTS



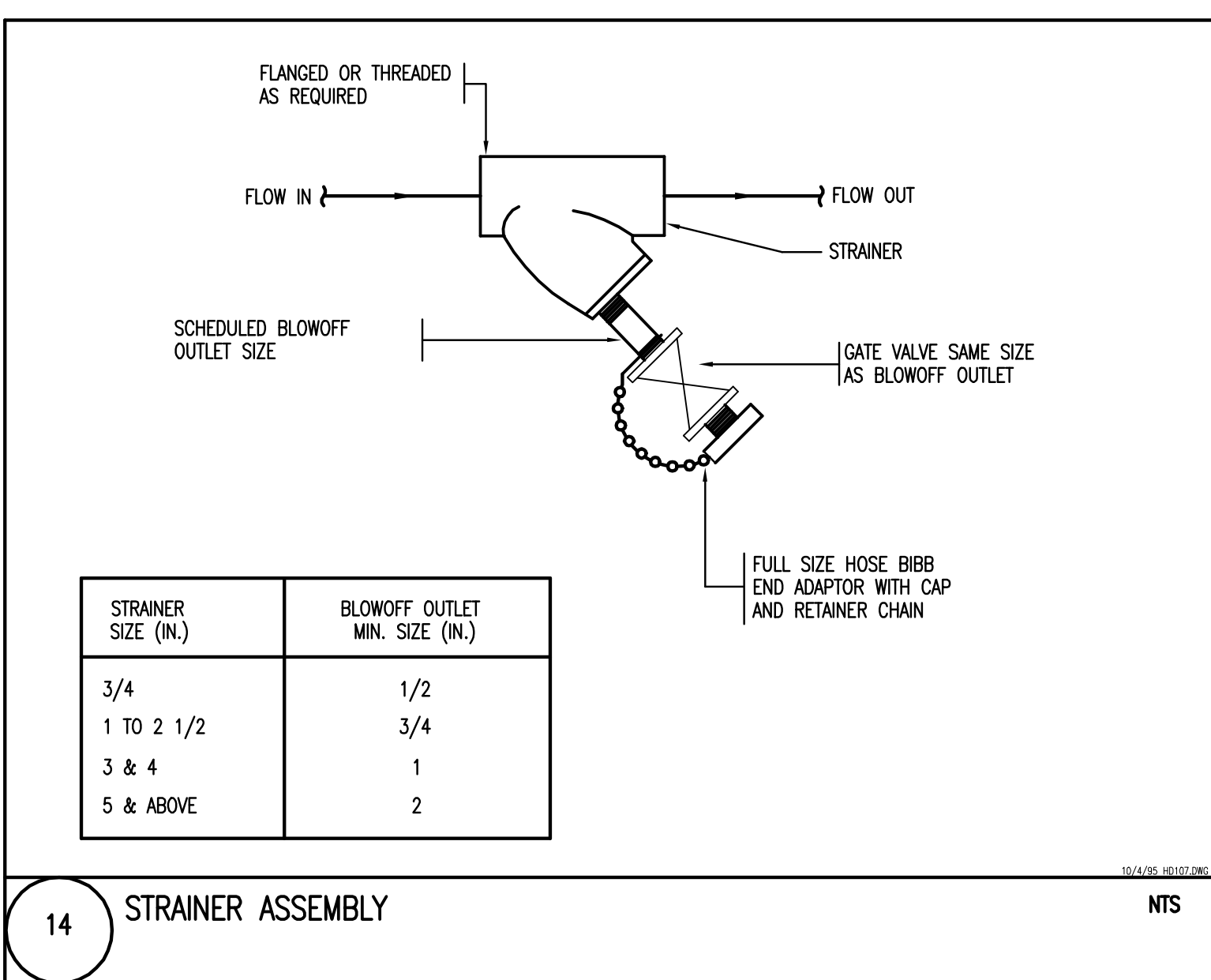
9 DISCHARGE STACKHEAD NTS



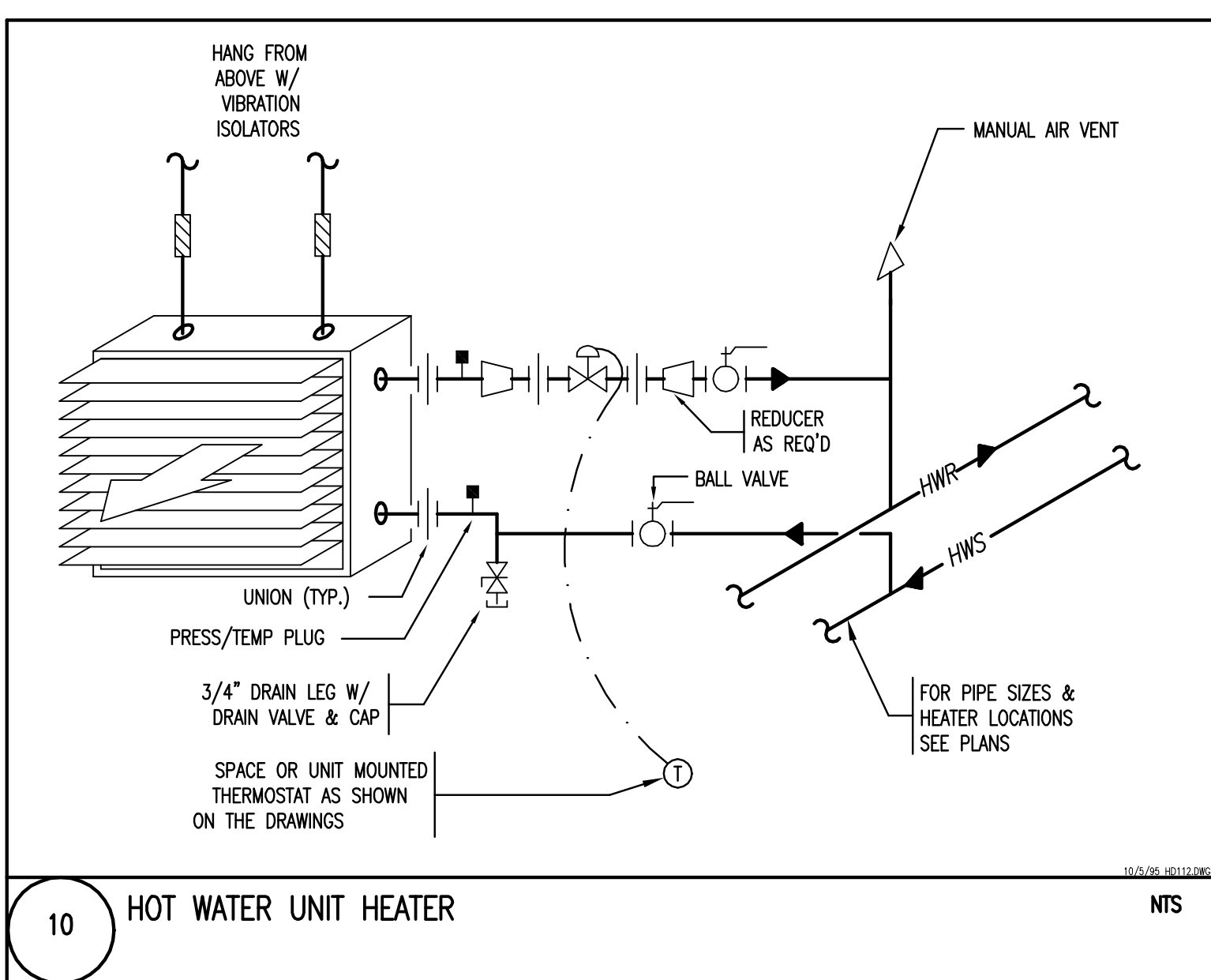
5 VERTICAL PIPE SUPPORT NTS



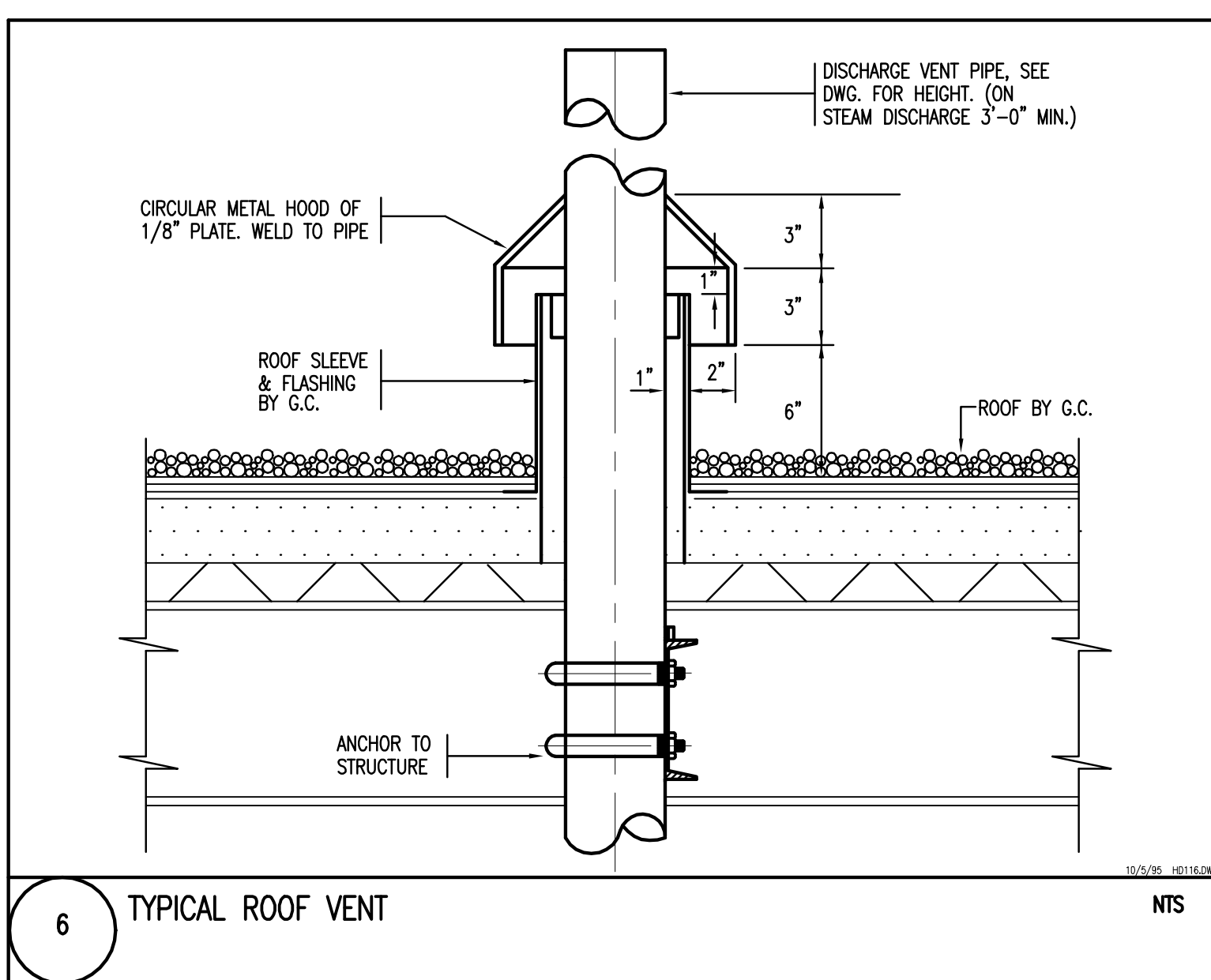
2 VERTICAL SPLIT CASE END SUCTION PUMP WITH FLEXIBLE CONNECTIONS NTS



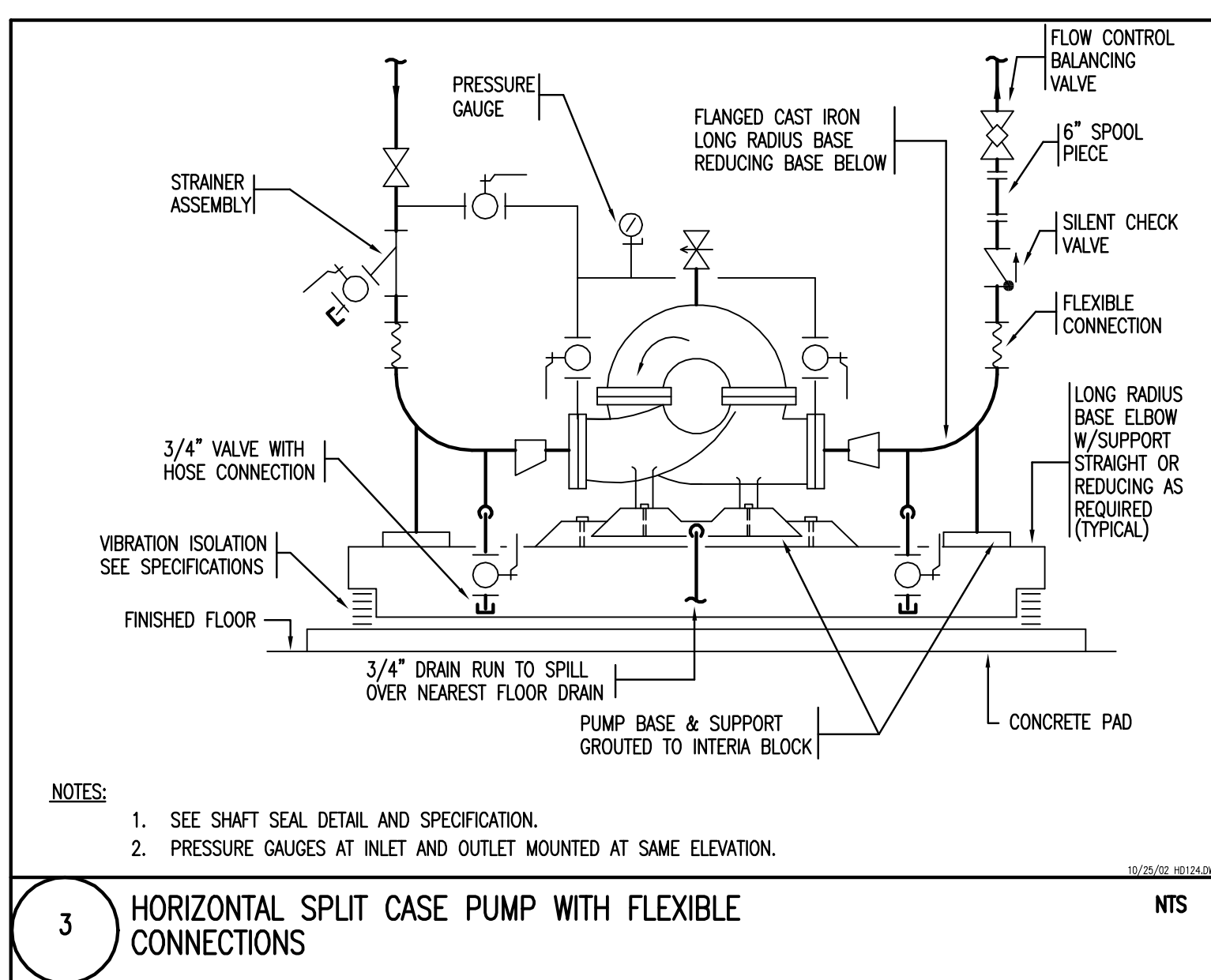
14 STRAINER ASSEMBLY NTS



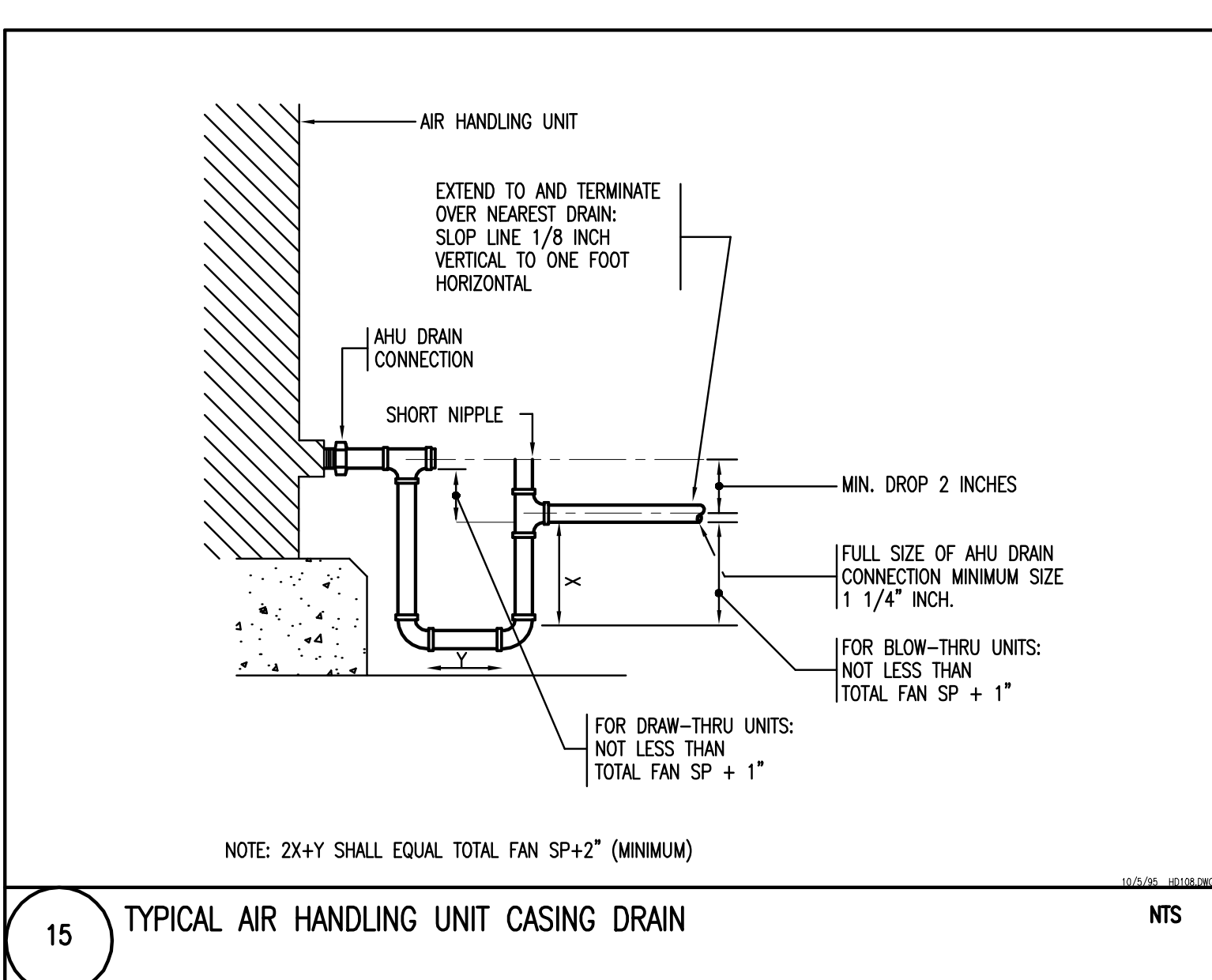
10 HOT WATER UNIT HEATER NTS



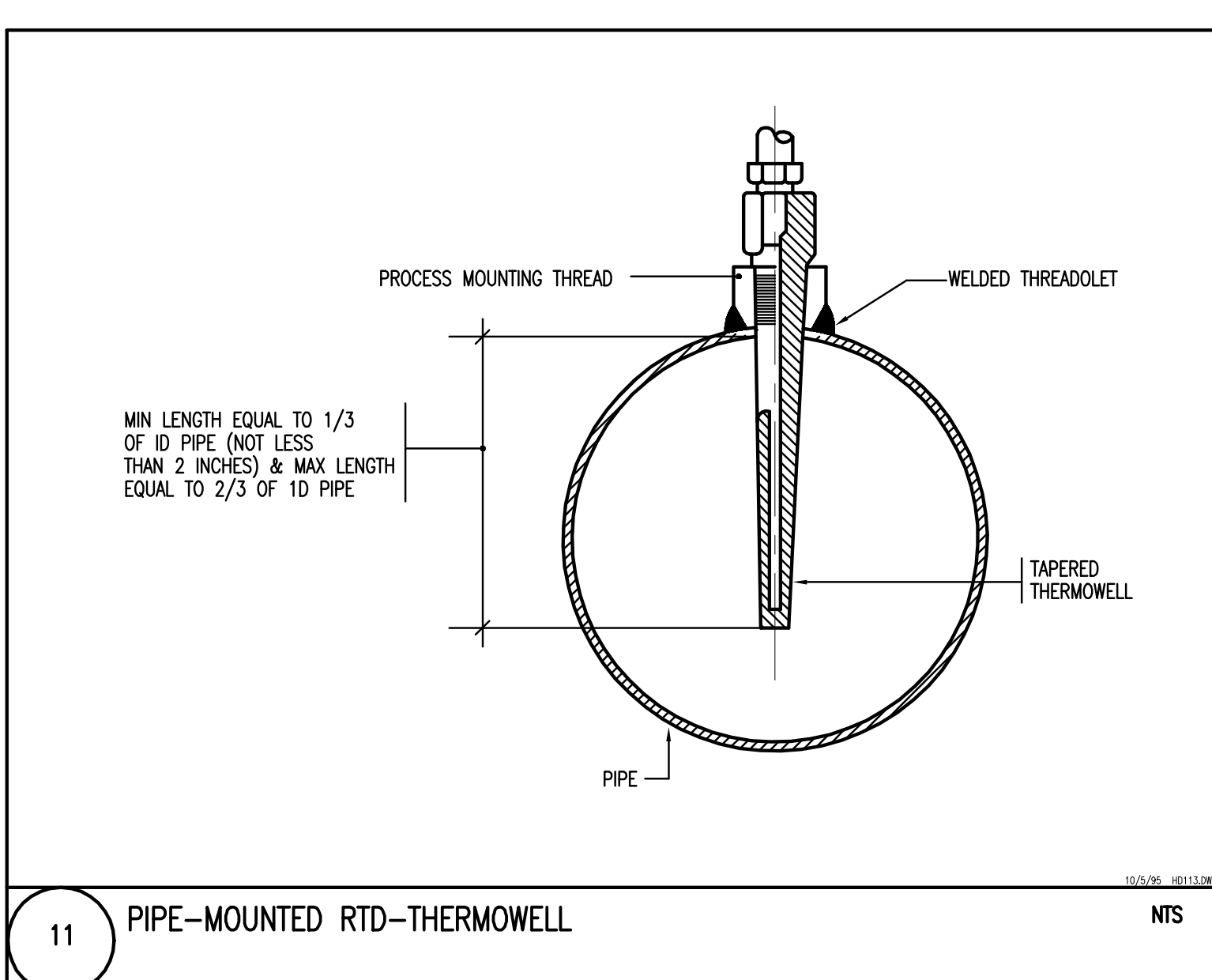
6 TYPICAL ROOF VENT NTS



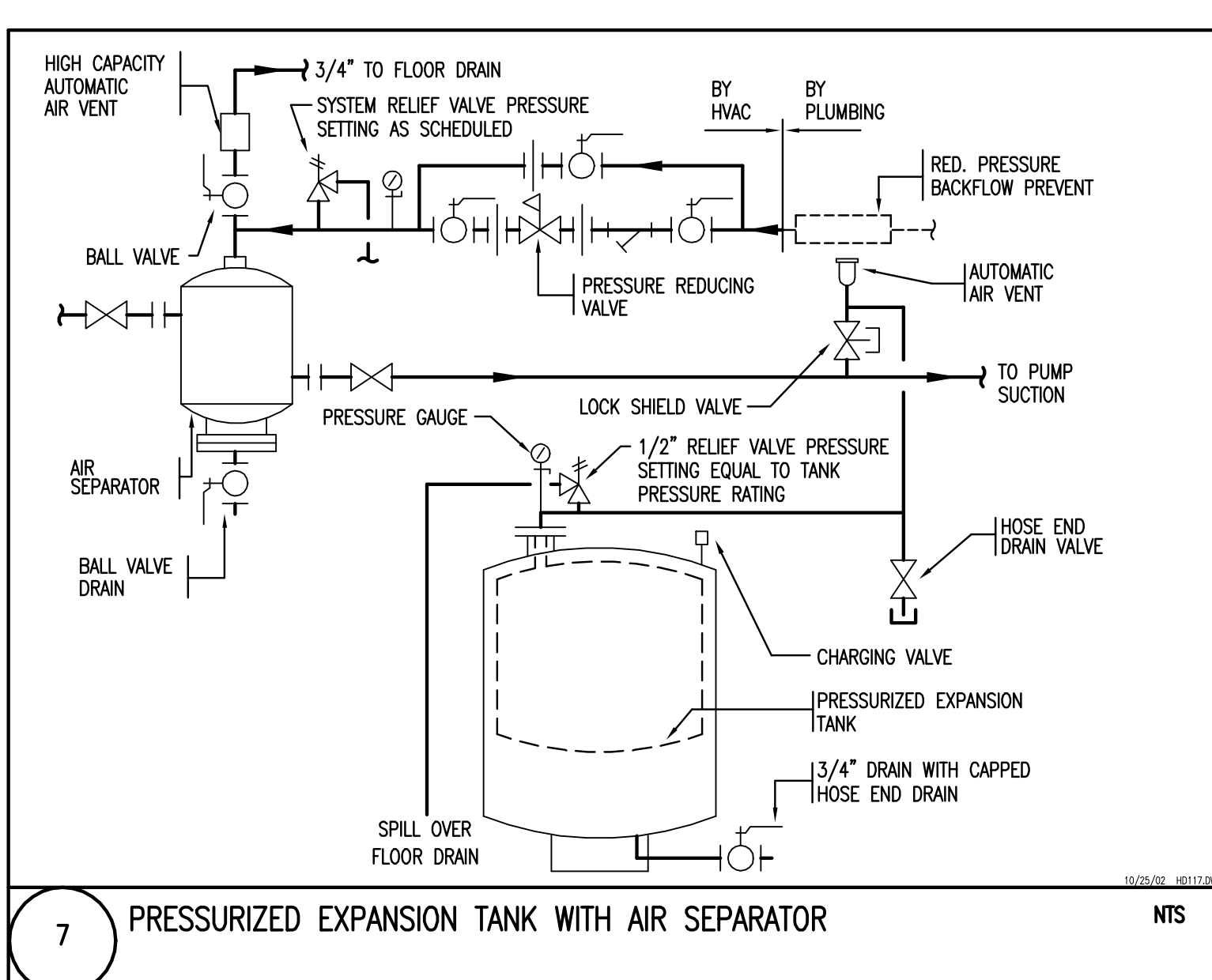
3 HORIZONTAL SPLIT CASE PUMP WITH FLEXIBLE CONNECTIONS NTS



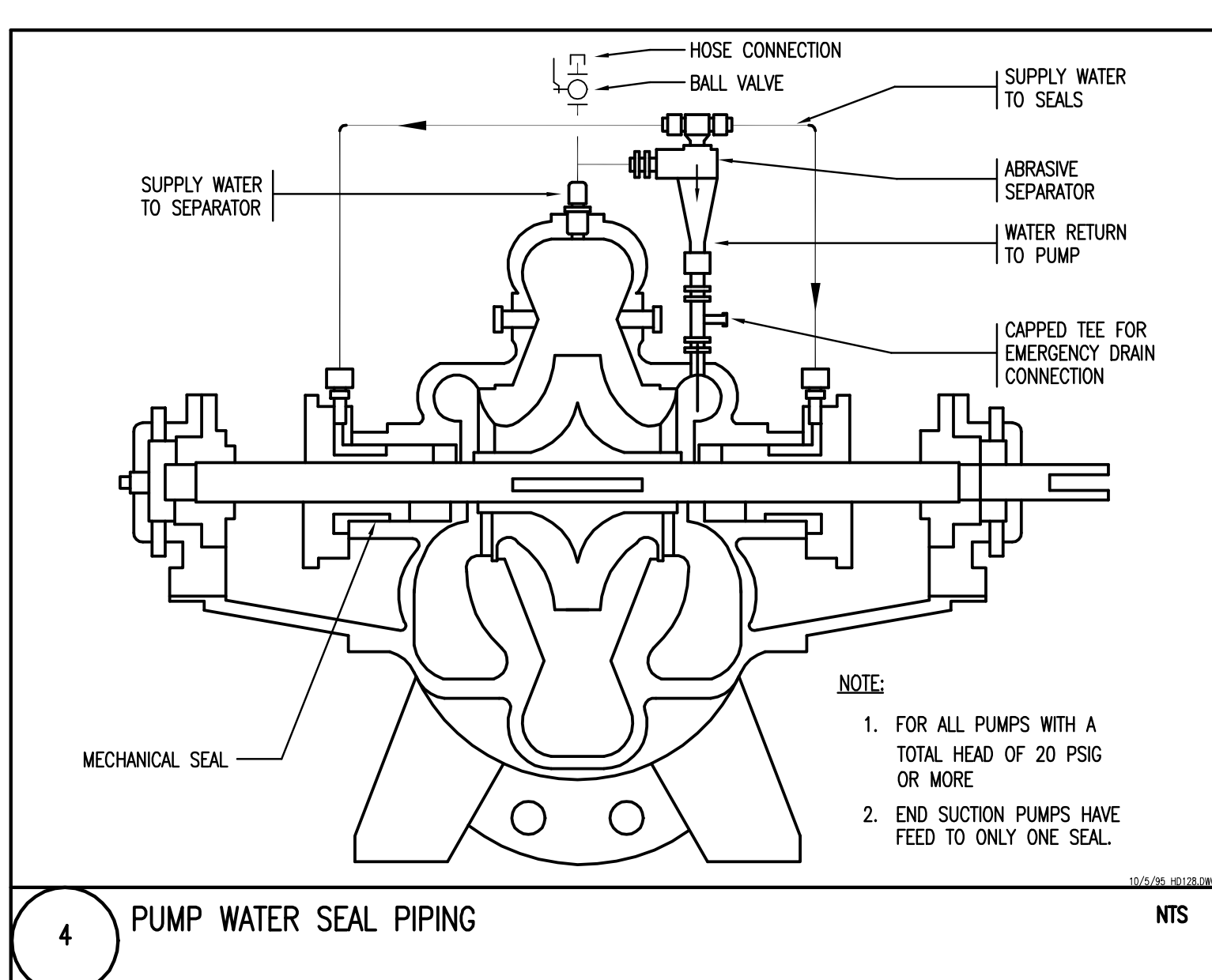
15 TYPICAL AIR HANDLING UNIT CASING DRAIN NTS



11 PIPE-MOUNTED RTD-THERMOWELL NTS



7 PRESSURIZED EXPANSION TANK WITH AIR SEPARATOR NTS



4 PUMP WATER SEAL PIPING NTS

J:\V05\2523000.DWG\HVAC\DWG-H5.02.DWG-11-07-2006 13:59:26 - RWA