

- Consultant  
 CIVIL ENGINEER  
 DeLuca-Hoffman Associates, Inc.  
 775 Main Street, Suite 8  
 South Portland, ME 04106  
 Phone: (207) 775-1121  
 Fax: (207) 879-0896
- Consultant  
 ASSOCIATE ARCHITECT/STRUCTURAL ENGINEER  
 SMRT  
 144 Fore Street P.O. Box 618  
 Portland, Maine 04104  
 Phone: (207) 772-3646  
 Fax: (207) 772-1070
- Consultant  
 MECHANICAL/ELECTRICAL ENGINEER  
 Bond, Roe + Athanas Consulting Engineers, LLC  
 The Arsenal on the Charles  
 311 Arsenal Street  
 Watertown, MA 02472-5789  
 Phone: 617.254.0016  
 Fax: 617.324.9339
- Consultant  
 EQUIPMENT PLANNING  
 Gene Burton & Associates  
 1893 General George Patton Drive  
 Franklin, Tennessee 37067  
 Phone: (615) 376-3100  
 Fax: (615) 376-3114
- Consultant  
 CONSTRUCTION MANAGER  
 Gilbane Building Company  
 7 Jackson Walkway  
 Providence, Rhode Island 02903  
 Phone: (401) 456-5905  
 Fax: (401) 456-5516
- Consultant  
 FOOD SERVICE  
 Inman Foodservice, LLC  
 1808 West End Ave, Suite 1400  
 Nashville, TN 37203  
 Phone: (615) 321-5591  
 Fax: (615) 321-5699

It is the responsibility of the Construction Manager/General Contractor and all Sub-Contractors to verify all dimensions and accept conditions of prior work by related trades before proceeding with any work.

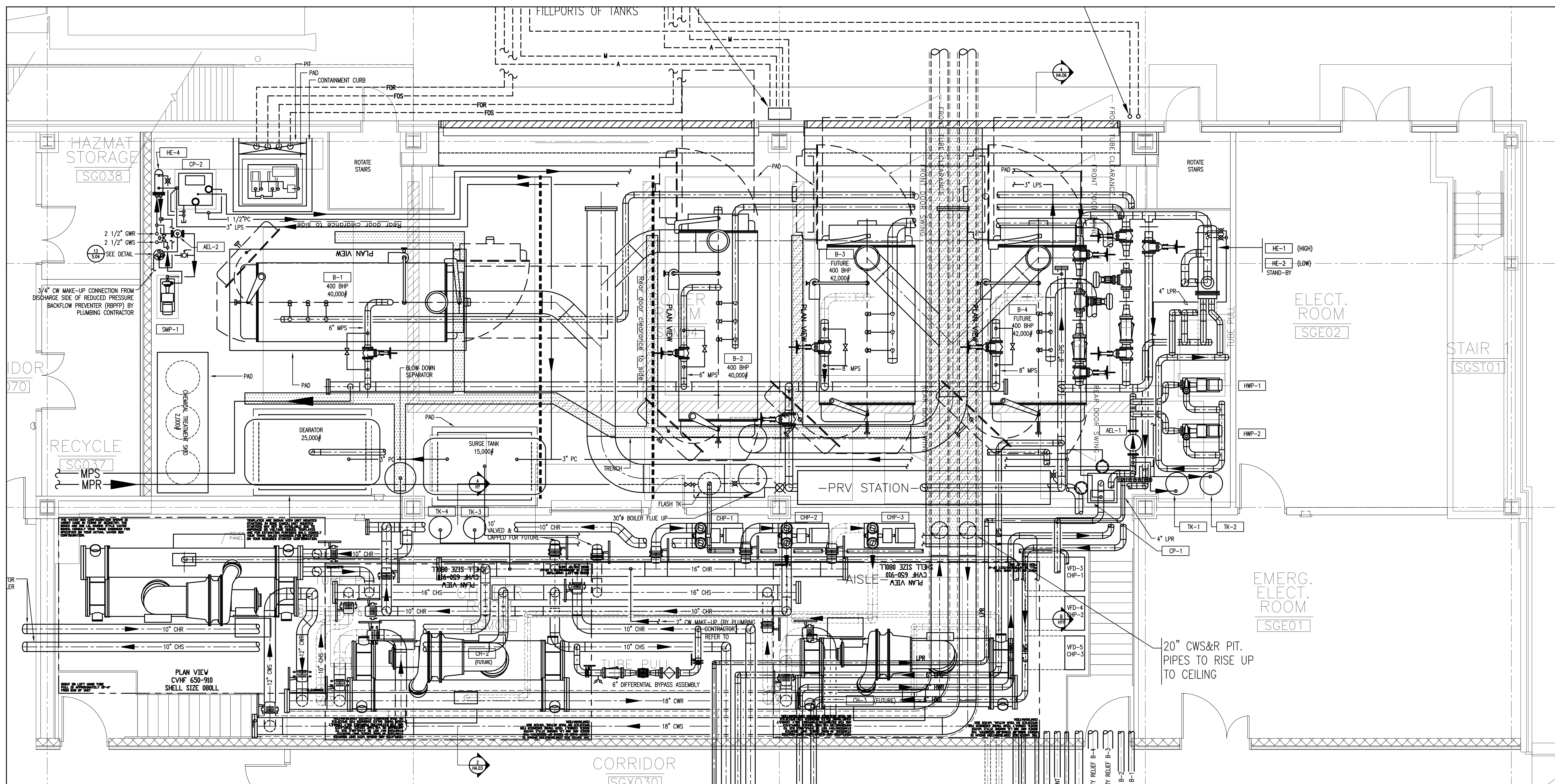
Date  
 11/10/06 Final-Issued for Construction  
 Drawn By  
 RWA  
 Scale  
 AS NOTED

- Francis  
 Cauffman  
 Foley  
 Hoffmann
- Francis Cauffman Architects Ltd. 2120 Arch Street Philadelphia, PA 19103 215-568-8290
- Project Title  
 Mercy Health Care System of Maine  
 FORE RIVER SHORT STAY HOSPITAL

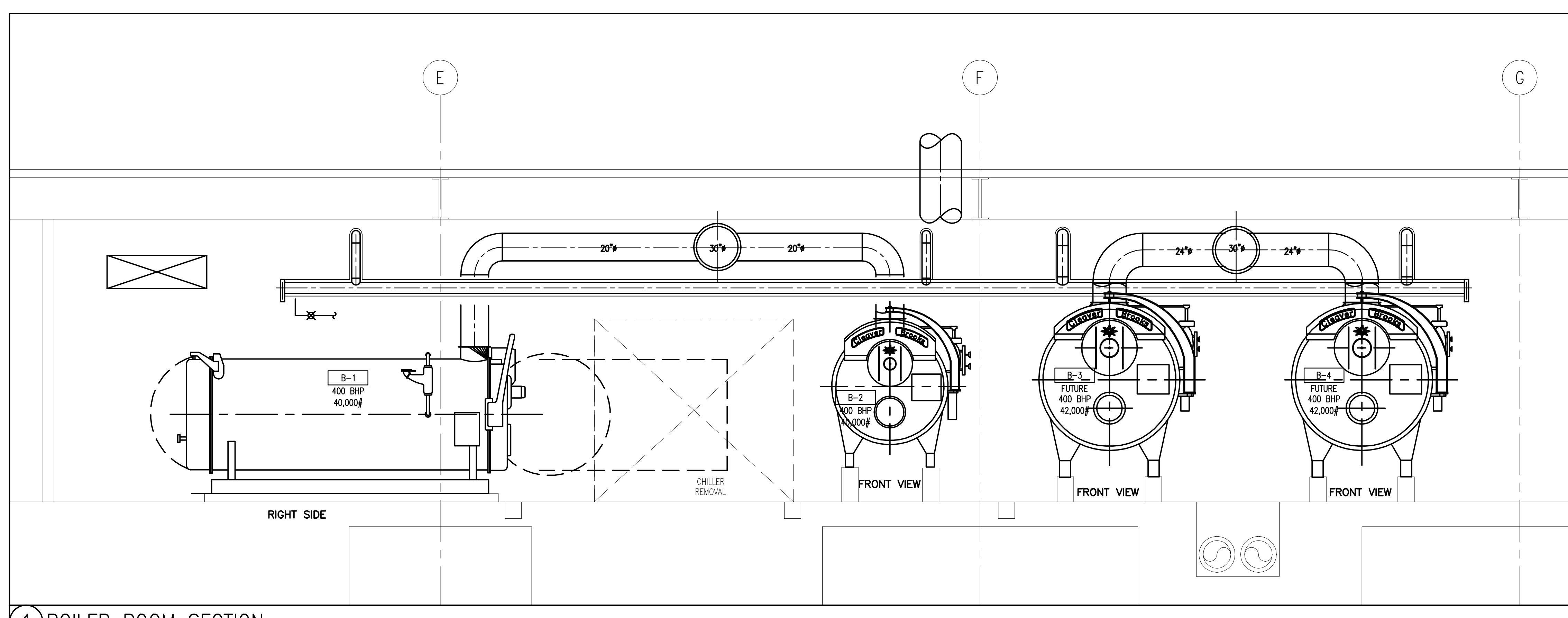
MERCY

Project Number  
 F05-4898  
 Drawing Title and Number  
 HVAC  
 PART PLAN

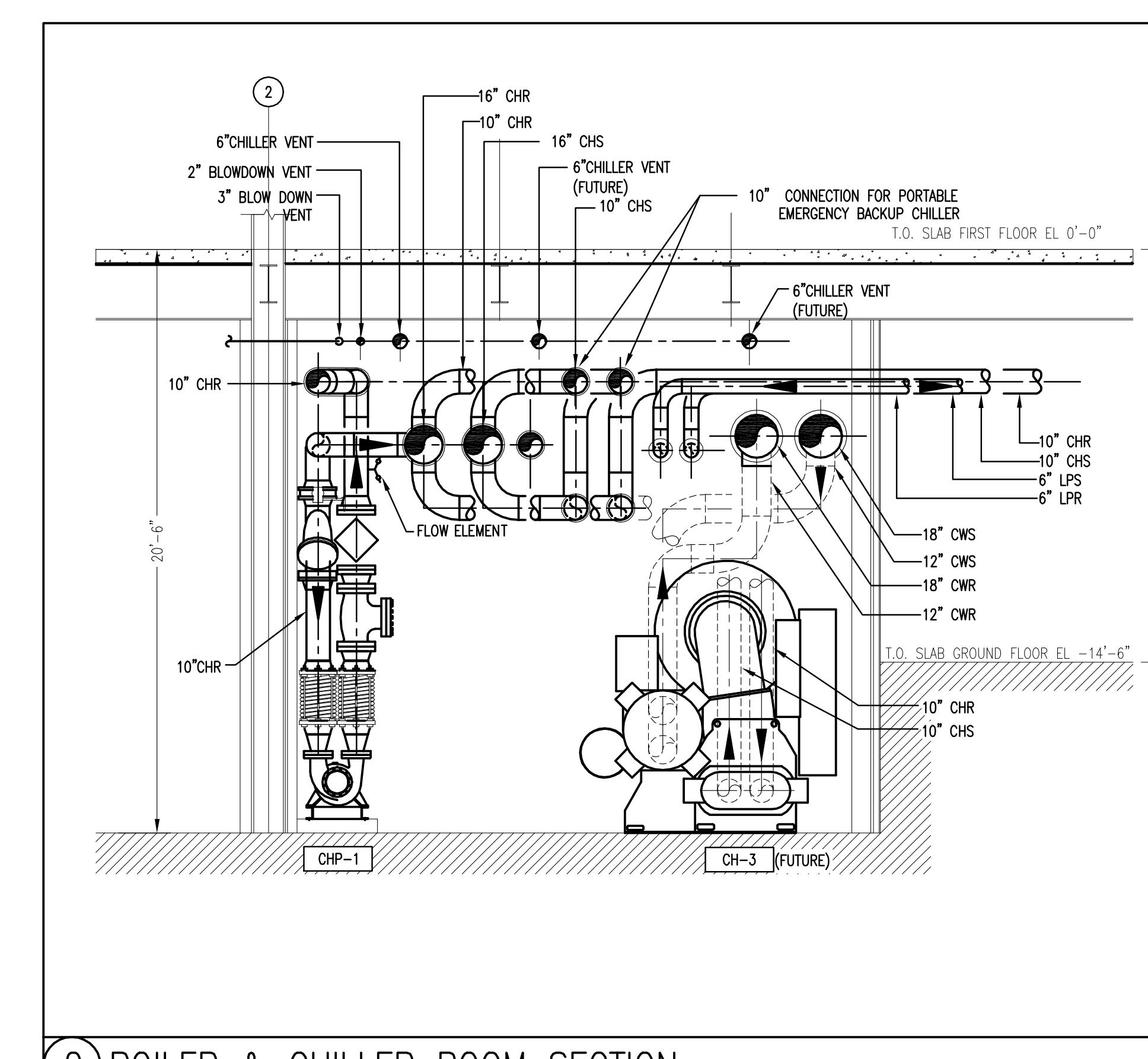
H4.03



BOILER & CHILLER ROOM PART PLAN SCALE: 1/4"=1'-0"



1 BOILER ROOM SECTION SCALE: 1/4"=1'-0"



2 BOILER & CHILLER ROOM SECTION SCALE: 1/4"=1'-0"