

Consultant  
**CIVIL ENGINEER**  
 DeLuca-Hoffman Associates, Inc.  
 778 Main Street, Suite 8  
 South Portland, ME 04106  
 Phone: (207) 775-1121  
 Fax: (207) 879-0896

Consultant  
**ASSOCIATE ARCHITECT/STRUCTURAL ENGINEER**  
 SMRT  
 144 Fore Street P.O. Box 618  
 Portland, Maine 04104  
 Phone: (207) 772-3846  
 Fax: (207) 772-1070

Consultant  
**MECHANICAL/ELECTRICAL ENGINEER**  
 Board, Rao + Athanas Consulting Engineers, LLC  
 The Arsenal on the Charles  
 311 Arsenal Street  
 Watertown, MA 02472-5789  
 Phone: 617.254.0016  
 Fax: 617.924.9339

Consultant  
**EQUIPMENT PLANNING**  
 Gene Burton & Associates  
 1893 General George Patton Drive  
 Franklin, Tennessee 37067  
 Phone: (615) 376-3100  
 Fax: (615) 376-3114

Consultant  
**CONSTRUCTION MANAGER**  
 Gibane Building Company  
 7 Jackson Walkway  
 Providence, Rhode Island 02903  
 Phone: (401) 456-5905  
 Fax: (401) 456-5516

Consultant  
**FOOD SERVICE**  
 Inman Foodservice, LLC  
 1808 West End Ave, Suite 1400  
 Nashville, TN 37203  
 Phone: (615) 321-5591  
 Fax: (615) 321-5689

It is the responsibility of the Construction Manager/General Contractor and all Sub-Contractors to verify all dimensions and accept conditions of prior work by related trades before proceeding with any work.

Date  
 11/10/06 Final-Issued for Construction  
 Drawn By  
 FA

Scale  
 1/8" = 1'-0"

Francis

Cauffman

Foley

Hoffmann

Francis Cauffman 2120 Arch Street  
 Foley Hoffmann Philadelphia, PA 19103  
 Architects Ltd. 215-568-8250

Project Title

Mercy Health Care System of Maine

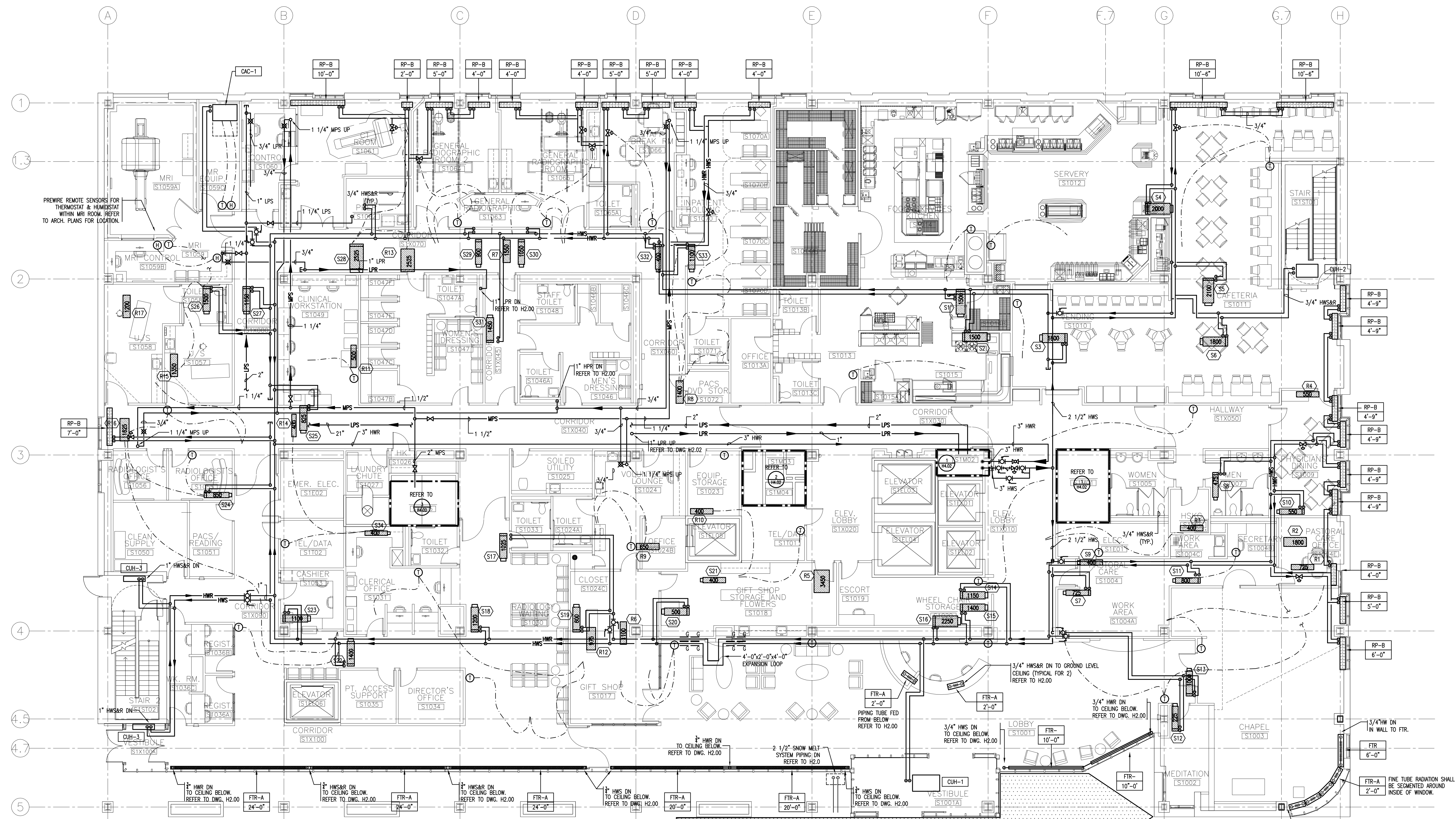
FORE RIVER SHORT STAY HOSPITAL



Project Number  
 F05-4898

Drawing Title and Number  
 HVAC PIPING LEVEL 1 PLAN

**H2.01**



S1	S2	S3	S4	S5	S6	S7	S8	S9	S10	S11	S12	S13	S14	S15	S16	S17	S18	S19	S20	S21	
CV-12	CV-12	CV-4	CV-16	CV-16	VCV-14	VCV-8	CV-8	W-6	VCV-8	VCV-10	VCV-8	VCV-10	CV-12	CV-12	CV-19	CV-12	CV-12	CV-12	CV-8	CV-8	W-6
1500	1500	1800	2000	2100	1800	725	475	400	550	800	225	1000	1150	1400	2250	1025	1200	600	500	400	400
1500	1500	1800	2000	2100	1800	375	475	400	275	400	125	500	1150	1400	2250	1025	1200	300	250	NO COIL	NO COIL
NO COIL																					
S22	S23	S24	S25	S26	S27	S28	S29	S30	S31	S32	S33	S34									
CV-12	VCV-12	VCV-10	CV-10	VCV-12	VCV-19	VCV-10	CV-12	VCV-6	VCV-12	W-6											
1400	1100	850	825	1800	1150	2525	900	1050	1450	400	1100	400									
1400	550	425	825	750	1150	1275	450	525	1450	200	550	400									
NO COIL																					
R1	R2	R3	R4	R5	R6	R7	R8	R9	R10	R11	R12	R13	R14	R15	R16	R17					
WR-10	WR-6	WR-14	WR-8	CVR-22	WR-12	WR-14	WR-12	CVR-8	WR-6	CVR-8	CV-10	WR-19	WR-6	CV-12	WR-14	WR-12					
725	400	1800	550	3450	1100	1100	1400	650	400	500	975	2525	400	1350	1625	1200					
375	400	900	225	3450	550	550	700	650	400	500	975	1275	400	1350	850	600					

1 FIRST FLOOR PLAN  
 A1.01 1/8" = 1'-0"