

Consultant  
**CIVIL ENGINEER**  
 DeLuca-Hoffman Associates, Inc.  
 778 Main Street, Suite 8  
 South Portland, ME 04106  
 Phone: (207) 775-1121  
 Fax: (207) 879-0896

Consultant  
**ASSOCIATE ARCHITECT/STRUCTURAL ENGINEER**  
 SMRT  
 144 Fore Street P.O. Box 618  
 Portland, Maine 04104  
 Phone: (207) 772-3846  
 Fax: (207) 772-1070

Consultant  
**MECHANICAL/ELECTRICAL ENGINEER**  
 Bard, Rao + Athanos Consulting Engineers, LLC  
 The Arsenal on the Claries  
 311 Arsenal Street  
 Watertown, MA 02472-5789  
 Phone: 617.254.0016  
 Fax: 617.924.9339

Consultant  
**EQUIPMENT PLANNING**  
 Gene Burton & Associates  
 1893 General George Patton Drive  
 Franklin, Tennessee 37067  
 Phone: (615) 376-3100  
 Fax: (615) 376-3114

Consultant  
**CONSTRUCTION MANAGER**  
 Gilbane Building Company  
 7 Jackson Walkway  
 Providence, Rhode Island 02903  
 Phone: (401) 456-5905  
 Fax: (401) 456-5516

Consultant  
**FOOD SERVICE**  
 Inman Foodservice, LLC  
 1808 West End Ave, Suite 1400  
 Nashville, TN 37203  
 Phone: (615) 321-5591  
 Fax: (615) 321-5689

It is the responsibility of the Construction Manager/General Contractor and all Sub-Contractors to verify all dimensions and accept conditions of prior work by related trades before proceeding with any work.

Date  
 11/10/06 Final-Issued for Construction  
 Drawn By  
 DPB

Scale  
 1/8"=1'-0"

**Francis**

**Cauffman**

**Foley**

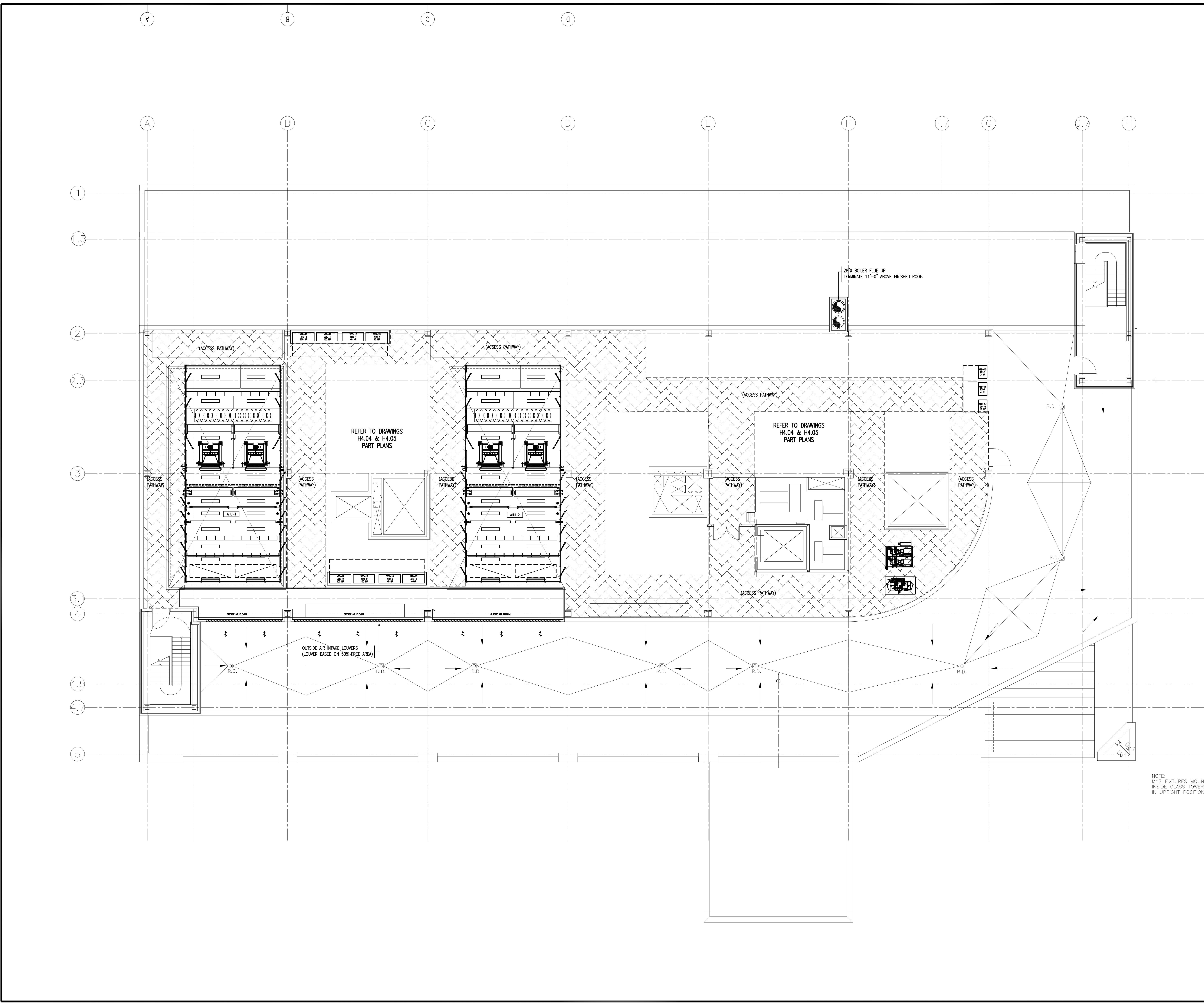
**Hoffmann**

Francis Cauffman 2120 Arch Street  
 Foley Hoffmann Philadelphia, PA 19103  
 Architects Ltd. 215-568-8250

Project Title  
 Mercy Health Care  
 System of Maine  
 FORE RIVER SHORT  
 STAY HOSPITAL



Project Number  
 F05-4898  
 Drawing Title and Number  
 HVAC  
 DUCTWORK  
 PENTHOUSE PLAN  
**H1.05**



NOTE:  
 M17 FIXTURES MOUNTED  
 INSIDE GLASS TOWER AIMED  
 IN UPRIGHT POSITION