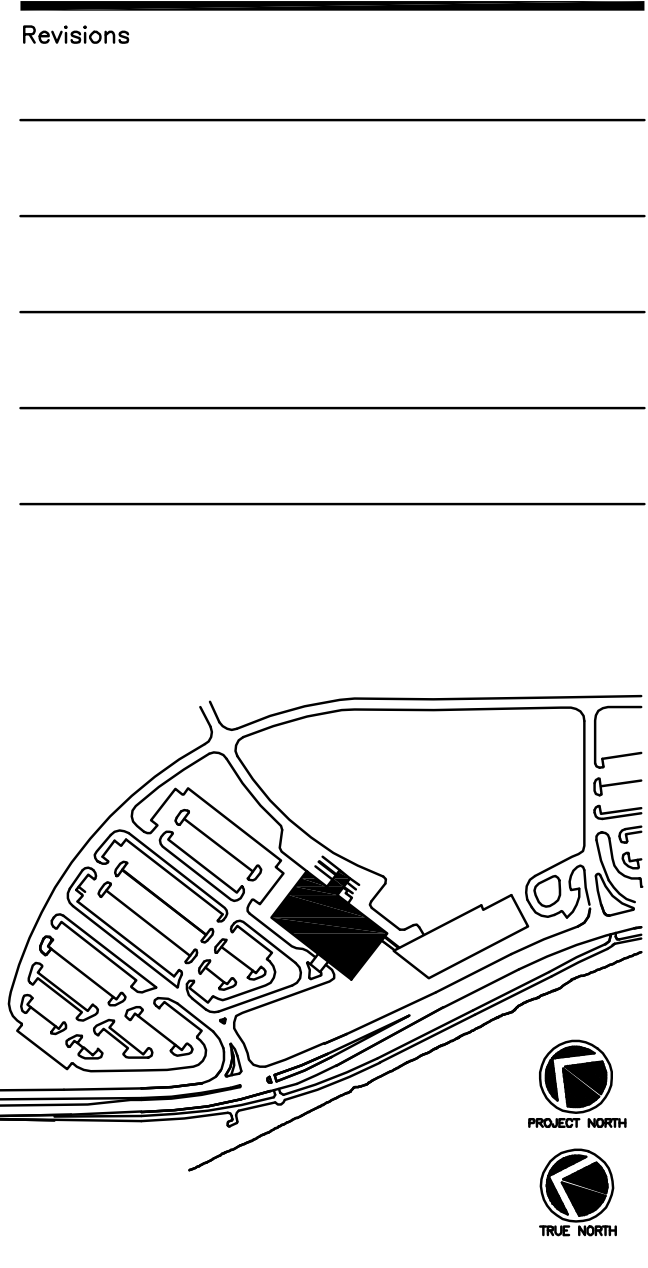


- KEYNOTES:**
- ◇ TYPICAL OPERATING ROOM SUPPLY DIFFUSERS TYPE "N" SCHEDULED TO BE 4'x2' LAMINAR FLOW OR 2'x2' LAMINAR FLOW DIFFUSER WITH 10" OR 8" FLEXIBLE CONNECTION (4'x2', 10" CONNECTION) (2'x2', 8" CONNECTION) 4'x2' LAMINAR TO PROVIDE 200 CFM EACH 2'x2' LAMINAR TO PROVIDE 200 CFM EACH (TYPICAL FOR OPERATING ROOMS 1 THRU 6)
 - ◇ MINOR PROCEDURE ROOM SUPPLY DIFFUSERS TYPE "N" SCHEDULED TO BE 4'x2' LAMINAR FLOW OR 2'x2' LAMINAR FLOW DIFFUSER WITH 10" OR 8" FLEXIBLE CONNECTION (4'x2', 10" CONNECTION) (2'x2', 8" CONNECTION) 4'x2' LAMINAR TO PROVIDE 200 CFM EACH 2'x2' LAMINAR TO PROVIDE 200 CFM EACH



- Consultant
CIVIL ENGINEER
 DeLuca-Hoffman Associates, Inc.
 778 Main Street, Suite 8
 South Portland, ME 04106
 Phone: (207) 775-1121
 Fax: (207) 879-0896
- Consultant
ASSOCIATE ARCHITECT/STRUCTURAL ENGINEER
 SMRT
 144 Fore Street P.O. Box 618
 Portland, Maine 04104
 Phone: (207) 772-3846
 Fax: (207) 772-1070
- Consultant
MECHANICAL/ELECTRICAL ENGINEER
 The Arsenal on the Charles
 311 Arsenal Street
 Watertown, MA 02472-5789
 Phone: 617.254.0016
 Fax: 617.924.9339
- Consultant
EQUIPMENT PLANNING
 Gene Burton & Associates
 1893 General George Patton Drive
 Franklin, Tennessee 37067
 Phone: (615) 376-5100
 Fax: (615) 376-3114
- Consultant
CONSTRUCTION MANAGER
 Gilbane Building Company
 7 Jackson Walkway
 Providence, Rhode Island 02903
 Phone: (401) 456-5905
 Fax: (401) 456-5516
- Consultant
FOOD SERVICE
 Inman Foodservice, LLC
 1808 West End Ave. Suite 1400
 Nashville, TN 37203
 Phone: (615) 321-5591
 Fax: (615) 321-5689

It is the responsibility of the Construction Manager/General Contractor and all Sub-Contractors to verify all dimensions and accept conditions of prior work by related trades before proceeding with any work.

Date
 11/10/06 Final-Issued for Construction
 Drawn By
 FA
 Scale
 1/8"=1'-0"

Francis
Cauffman
Foley
Hoffmann

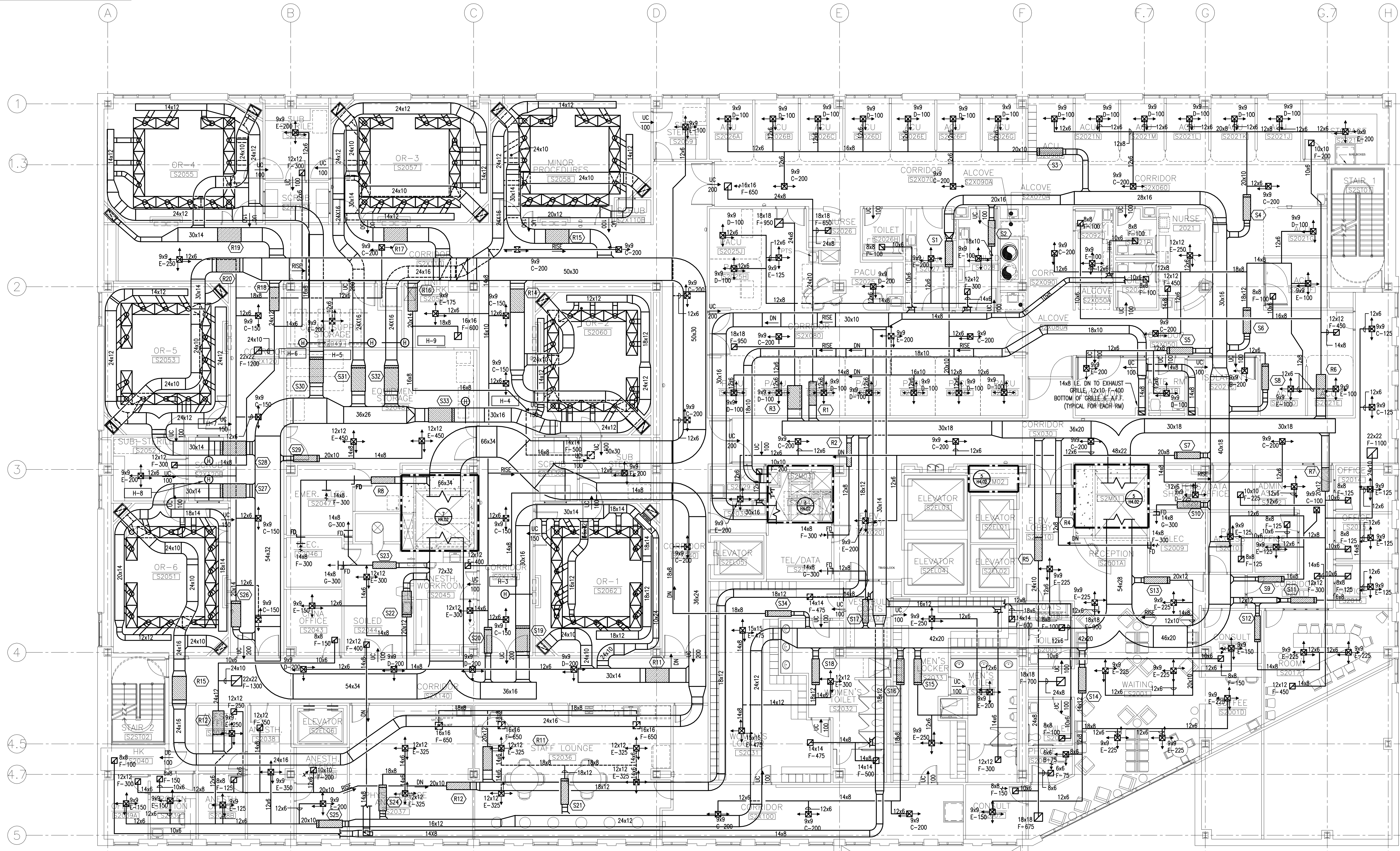
Francis Cauffman
 Foley Hoffmann
 Architects Ltd.

2120 Arch Street
 Philadelphia, PA 19103
 215-568-8250

Project Title
 Mercy Health Care
 System of Maine
 FORE RIVER SHORT
 STAY HOSPITAL

MERCY

Project Number
 F05-4898
 Drawing Title and Number
 HVAC
 DUCTWORK
 LEVEL 2 PLAN
H1.02



(S1)	(S2)	(S3)	(S4)	(S5)	(S6)	(S7)	(S8)	(S9)	(S10)	(S11)	(S12)	(S13)	(S14)	(S15)	(S16)	(S17)	(S18)	(S19)	(S20)	(S21)	(S22)	(S23)	(S24)	(S25)	(S26)	(S27)	(S28)	(S29)	(S30)	(S31)	(S32)	(S33)	(S34)	
VCV-12	CV-10	VCV-12	VCV-12	CV-6	CV-12	CV-12	CV-6	VCV-8	CV-6	VCV-8	CV-12	CV-10	CV-8	CV-8	CV-6	CV-12	VCV-19	CV-12	VCV-12	CV-12	CV-8	VCV-8	VCV-8	VCV-8	VCV-10	CV-14	VCV-19	VCV-19	VCV-19	VCV-19	VCV-19	VCV-19	VCV-19	
1100	825	1100	1200	300	1150	1325	200	550	300	625	450	1275	900	650	600	300	1250	1500	1375	650	1250	600	325	500	1700	1500	1500	450	1500	1500	1500	700		
700	825	700	700	300	1150	1325	200	275	300	350	225	1275	900	650	600	300	1250	1500	1375	650	1250	600	325	500	1700	1500	1500	450	1500	1500	1500	700		
(R1)	(R2)	(R3)	(R4)	(R5)	(R6)	(R7)	(R8)	(R9)	(R10)	(R11)	(R12)	(R13)	(R14)	(R15)	(R16)	(R17)	(R18)	(R19)	(R20)															
WR-12	WR-10	WR-16	WR-6	WR-14	WR-14	WR-19	WR-8	WR-16	WR-14	WR-16	WR-10	WR-16	WR-16	WR-16	WR-12	WR-16	WR-14	WR-16	WR-16															
1300	300	2150	300	1525	1850	2250	600	2750	1450	1950	1000	2750	2750	2750	1100	2750	1800	2750	2750															
700	300	1100	300	1525	1850	2250	600	2750	1450	1950	1000	2750	2750	1100	2750	1800	2750	2750	2750															

1 SECOND FLOOR PLAN
 A1.03 1/8" = 1'-0"