

**GENERAL SPECIFICATIONS**

- 1- HOOD CONSTRUCTION AND DESIGN HEIGHTS UNIFORM MECHANICAL AND INC 2003.
- 2- HOOD IS NSF 400.1 (1) SILENT.
- 3- ALL SURFACES OF HOOD ARE CONSTRUCTED OF 18 GA STAINLESS STEEL. SEAMS ARE FINISH W/ 1/8" RADIUS 1/4" H.P.H.
- 4- ALL INSTALLATION WORK IS TO BE PERFORMED BY QUALIFIED PERSONS AND IN ACCORDANCE WITH STATE AND LOCAL BUILDING CODE REQUIREMENTS.
- 5- THE INSTALLATION SHALL BE IN ACCORDANCE WITH NFPA 96, THE NATIONAL FIRE PROTECTION ASSOCIATION'S CODE FOR INSTALLATION AND RETENTION OF COMMERICAL KITCHEN EQUIPMENT.
- 6- HOOD IS PRE-PIPED PER ANSUL VET CHEMICAL FIRE SUPPRESSION.
- 7- ALL EXHAUST DUCTWORK AND TRANSITIONS ARE TO BE PROVIDED BY THE HVAC CONTRACTOR.
- 8- THE CAPTURE, JET FAN AND SPEED CONTROL SHALL PROVIDED BY HAZARD FIELD WORKING IS REQUIRED.
- 9- CLEARANCE FROM HOOD AND DUCTS TO OBSTACLES SHALL BE MAINTAINED AS REQUIRED BY ALL APPLICABLE BUILDING CODES.
- 10- FOR PROPER OPERATION OF THE HOOD SYSTEM, THE INSTALLER MUST HAVE THE HOOD BALANCED AND TESTED TO ENSURE THAT THE DOWN-DRAFT AND SUPPLY REQUIREMENTS OF THE HOOD ARE MET.

**HOOD INFORMATION TABLE**

HOOD NO.	MODEL	QTY	SIZE			AIR FLOW REQUIREMENTS										HOOD CONSTRUCTION	HOOD WEIGHT (LBS)		
			L	W	H	EXHAUST CFM	TABLE INCHES W.C.	TOTAL HOOD INCHES W.C.	EXHAUST COLLAR		GREASE EXTRACTOR		CAPTURE CFM	STATIC PRESSURE					
									QTY	SIZE	QTY	SIZE							
31	KVE	1	168"	51"	24"	1862	.15"	.50"	2	10"	8"	8	20"	13"	KSA	70	.23"	ALL 18GA 304 S.S.	1050
50L	KVE	1	102"	51"	24"	1701	.25"	.50"	1	12"	12"	5	20"	13"	KSA	43	.24"	ALL 18GA 304 S.S.	638
50R	KVE	1	102"	51"	24"	1522	.20"	.40"	1	12"	11"	5	20"	13"	KSA	43	.24"	ALL 18GA 304 S.S.	638
11R	KVE	1	72"	51"	24"	910	.20"	.34"	1	10"	8"	3	20"	13"	KSA	30	.24"	ALL 18GA 304 S.S.	450

TOTAL EXHAUST = 5995

**NOTE: VERIFICATION REQUIRED FOR EXHAUST. WILL EACH HOOD REQUIRE AN EXHAUST FAN OR SHARE A COMMON FAN.**

**HOOD INFORMATION TABLE**

HOOD NO.	QTY	LIGHTS		SWITCH PANEL		M.C.P.	STAND-OFF		BACKSPLASH		CEILING CLOSURES		FIRE SYSTEM		
		TYPE	LOCATION	# OF SWITCHES	LOCATION		WIDTH	LOCATION	HEIGHT	LENGTH	INSULATED	HEIGHT	# OF SIDES	TYPE	SIZE
31	2	48" L FLUORESCENT T-8	HOOD	HOOD	LIGHT		3"	REAR					ANSUL R-102	6 GALLON	REMOTE
50L	1	48" L FLUORESCENT T-8	HOOD	FAN/LIGHT			3"	REAR							
50R	1	48" L FLUORESCENT T-8					3"	REAR							
11R	1	48" L FLUORESCENT T-8	HOOD	FAN/LIGHT			3"	REAR						3 GALLON	REMOTE

**INSTALLATION REQUIREMENTS**

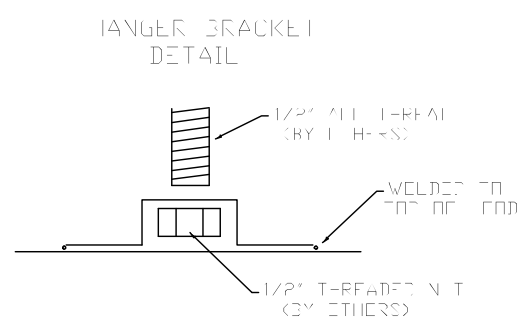
**FOODSERVICE EQUIPMENT CONTRACTOR'S REQUIREMENTS**

- 1- PROVIDE DRAWINGS OF APPLIANCE SEAMS, REFERENCING LOCAL SERVICE AND CONTRACTOR'S FINAL CONNECTION.
- 2- DELIVER, ASSEMBLE AND INSTALL SWITCH SYSTEM PER TRAVELING.
- 3- VERIFY WORKING AND ELECTRICAL DRAWINGS TO FINE TUNE.
- 4- THE F.S.E.C. MUST INFORM HAZARD OF ANY CHANGES TO THE HOOD SYSTEM. THE F.S.E.C. MUST BE RESPONSIBLE FOR THE F.S.E.C.

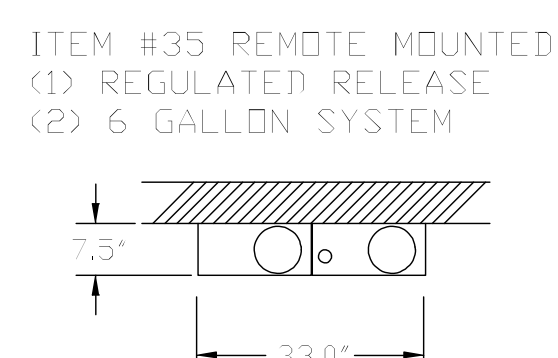
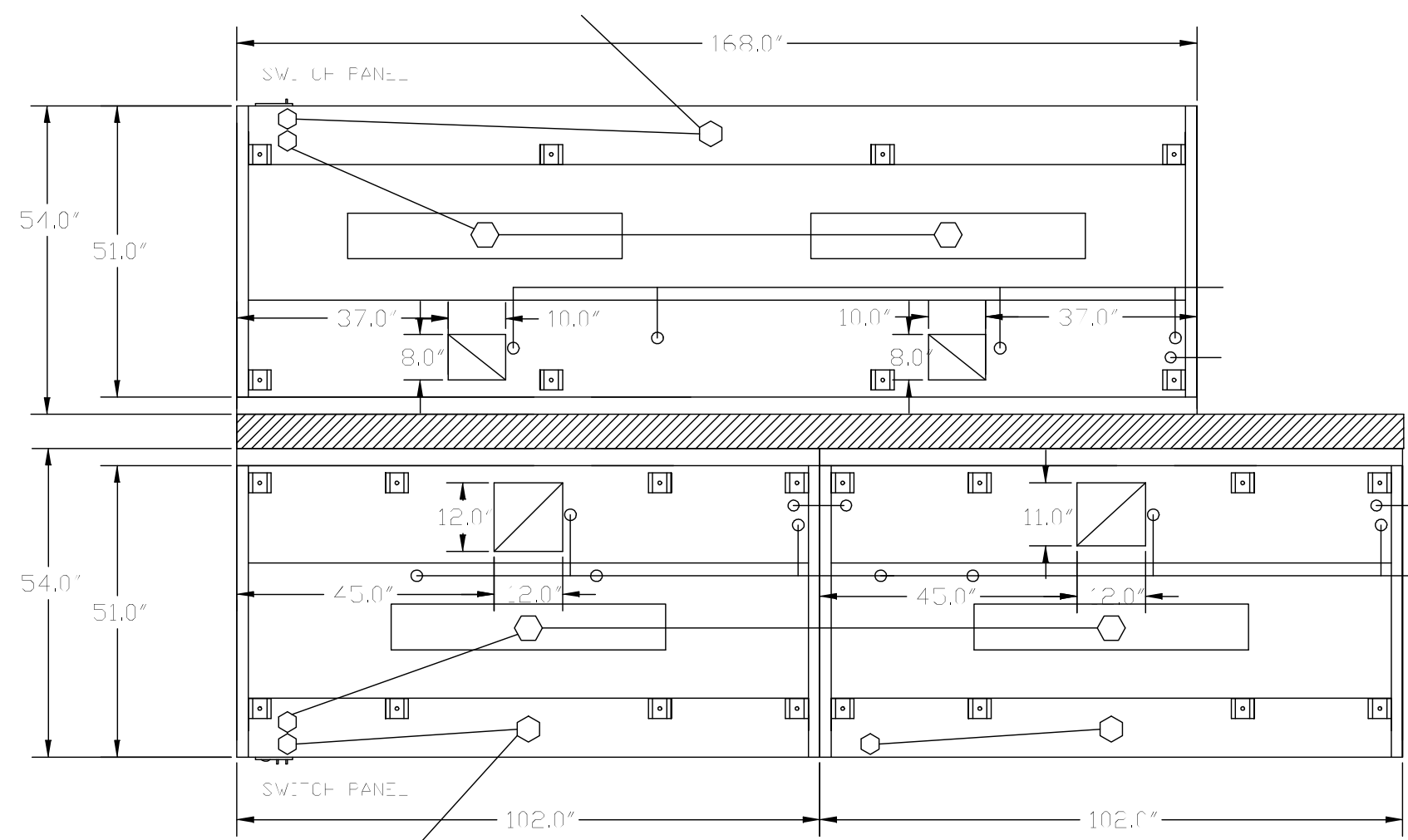
**ELECTRICAL CONTRACTOR'S REQUIREMENTS**

- 1- PROVIDE 120V CIRCUIT FOR HOOD LIGHTS AND CAPTURE JET FAN. NUM SWITCH PANEL WITH 40 AMP BREAKERS AND TERMINATION TOGETHER COMPLETE FIELD WIRING BETWEEN HOODS.

FLUORESCENT LIGHT FIXTURE  
 40 WATT MAX BULB - 1/2 AMP EA  
 CAPTURE JET FAN = .5 AMP EA

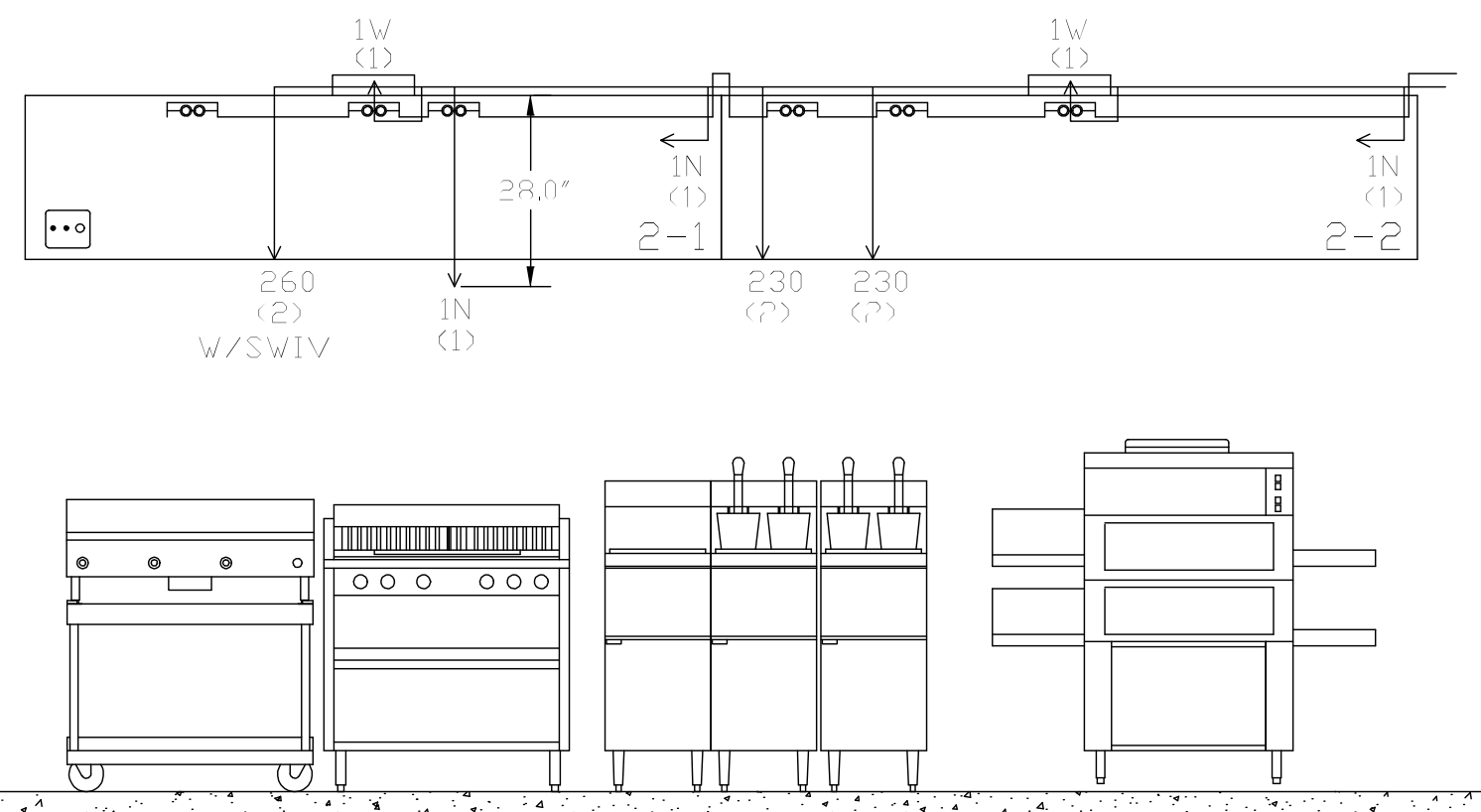


**ITEM #31**

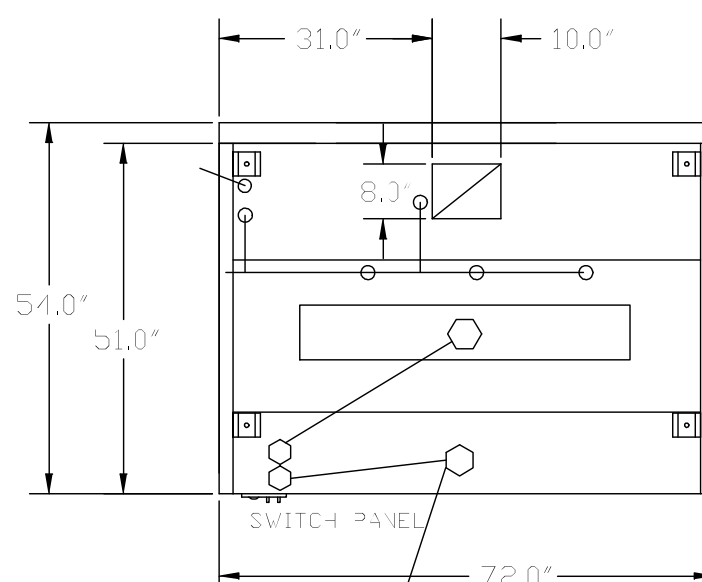
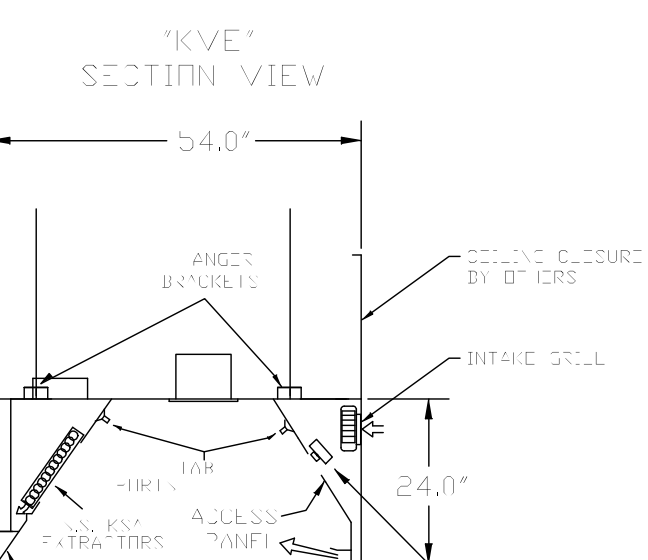
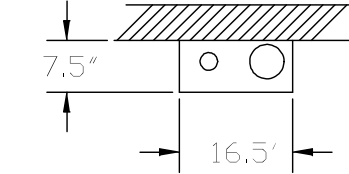


**ITEM #35 REMOTE MOUNTED:  
 (1) REGULATED RELEASE  
 (2) 6 GALLON SYSTEM**

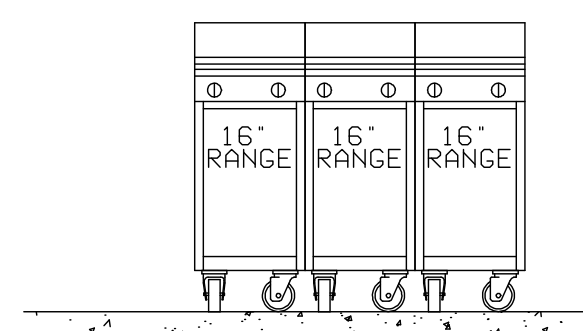
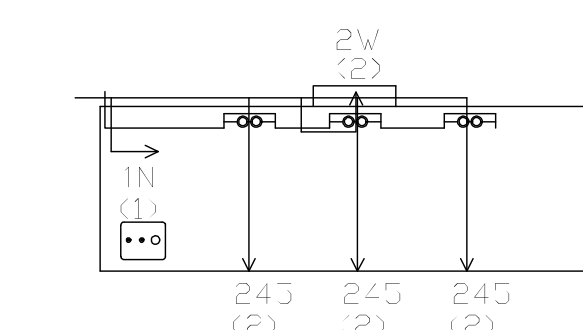
**ITEM #50**



**ITEM #110 REMOTE MOUNTED:  
 (1) REGULATED RELEASE**

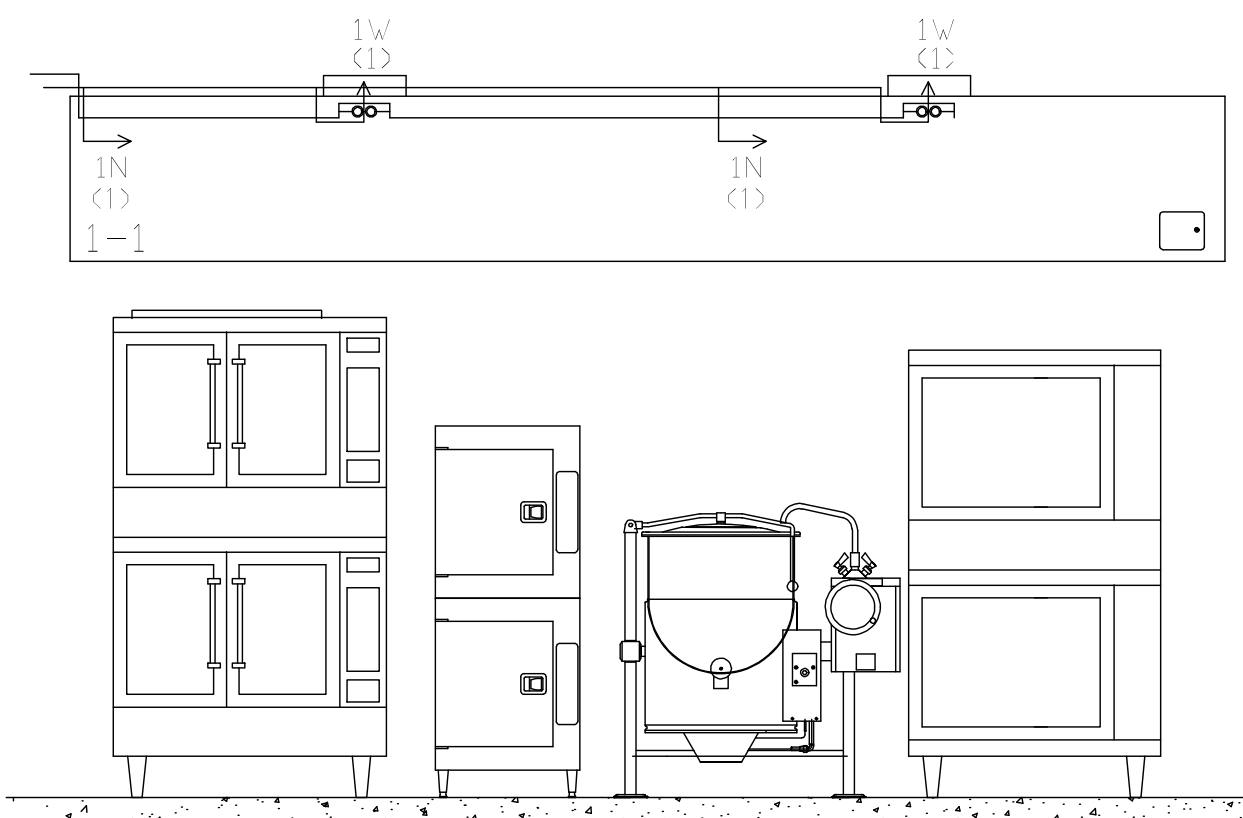
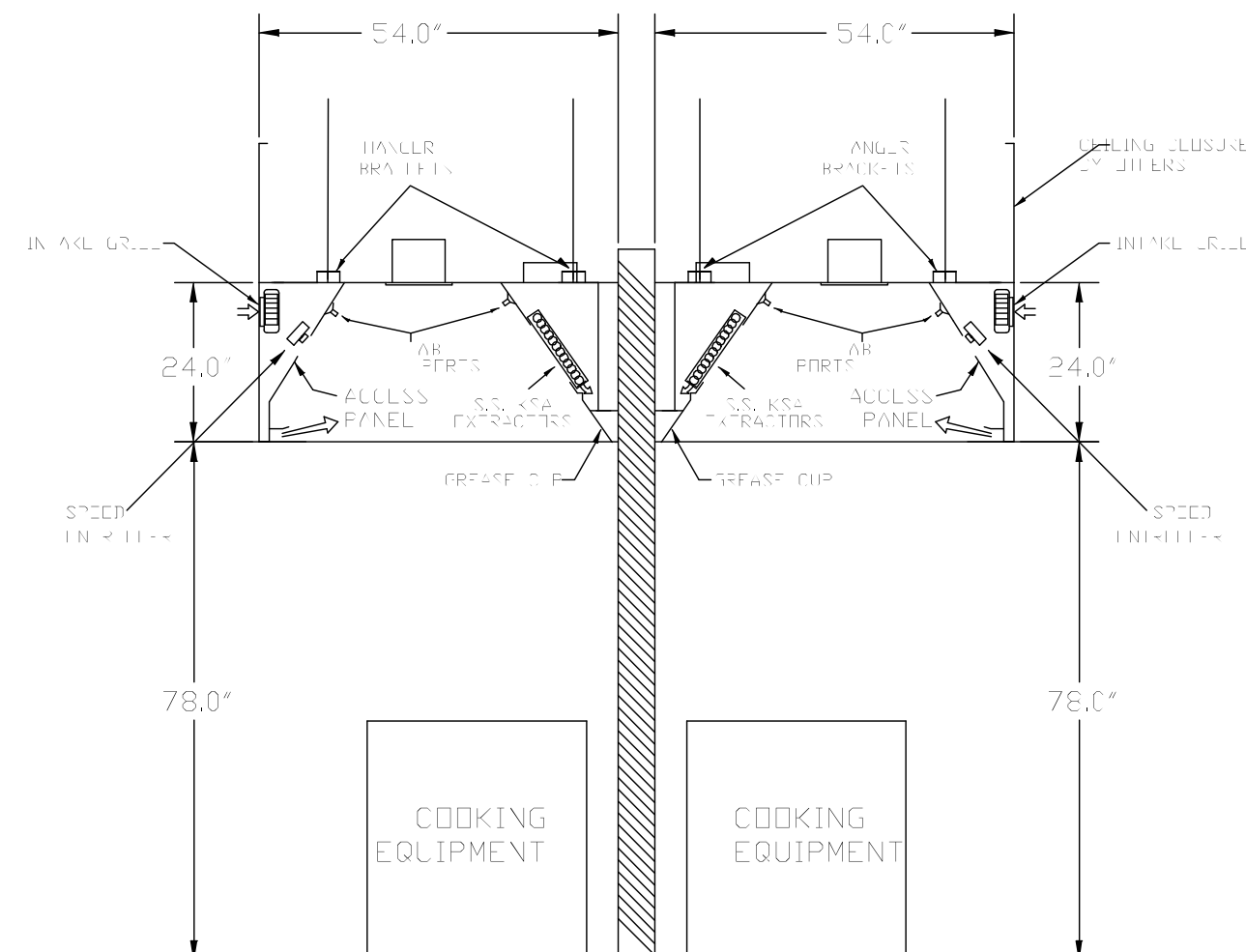


**ITEM #118**



- 1) ANSUL R-102 FIRE SYSTEM
- 2) ONE TANK SYSTEM (3 GALLON)
- 3) 3/8" BLACK IRON PIPING W/3/8" S.S. APPLIANCE DROPS
- 4) MECHANICAL GAS VALVE = (ADVISE SIZE)

**SECTION VIEW**



- 1) ANSUL R-102 FIRE SYSTEM
- 2) ONE TANK SYSTEM (3 GALLON)
- 3) 3/8" BLACK IRON PIPING W/3/8" S.S. APPLIANCE DROPS
- 4) MECHANICAL GAS VALVE = (ADVISE SIZE)

APPROVED DRAWING REQUIRED BEFORE FABRICATION  
 DRAWING APPROVED  
 APPROVED AS NOTED  
 RESUBMIT DRAWING  
 BY: \_\_\_\_\_ DATE: \_\_\_\_\_



REV DATE: 08/18/06  
 PROJECT: MERCY HOSPITAL  
 TITLE: HOOD LAYOUT  
 LOCATION: PORTLAND, ME  
 DATE: 08/15/06 DWG#: 13052

FINAL - ISSUED FOR CONSTRUCTION

Project:

Revisions:


Job Number: 04166  
 Date: 11-10-2006  
 Drawn By: WMI  
 Checked By: RSP  
 Scale: N.T.S.

HOOD DRAWING  
 ITEM #31

Sheet **FS-1.7**

**NOTE:**  
 THIS DRAWING INDICATES THE GENERAL EXTENT OF THE WORK AND IS NOT INTENDED TO INDICATE OR DESCRIBE ANY AND ALL WORK REQUIRED FOR THE FULL PERFORMANCE AND COMPLETION OF THE REQUIREMENTS OF THE CONTRACT DOCUMENTS.

Sheet