

Consultant
Civil Engineer
Delaney-Hoffman Associates, Inc.
726 Main Street, Suite 8
Philadelphia, PA 19103
Phone: (207) 775-1121
Fax: (207) 879-0898

Consultant
ASSOCIATE ARCHITECT/STRUCTURAL ENGINEER
SMRT
One State St., Box 618
Portland, Maine 04104
Phone: (207) 772-3846
Fax: (207) 772-1070

Consultant
MECHANICAL/ELECTRICAL ENGINEER
Boyd, Ross + Aronson Consulting Engineers, LLC
311 Arsenal Street
Portland, ME 04102-5789
Phone: (207) 724-0017
Fax: 617/924-9339

Consultant
EQUIPMENT PLANNING
S&B
183 General George Patton Drive
Franklin, Tennessee 37067
Phone: (615) 376-3114
Fax: (615) 376-3114

Consultant
CONSTRUCTION MANAGER
7 Johnson Walkway
Portland, ME 04101-4898
Phone: (407) 456-8998
Fax: (407) 456-5516

Consultant
Innon Solutions, LLC
1808 West End Ave. Suite 1400
Nashville, TN 37203
Phone: (615) 321-5591
Fax: (615) 321-5889

11/10/06 Find-Issued for Construction
Date
Drawn By
MF
Scale
1/8" = 1'-0"

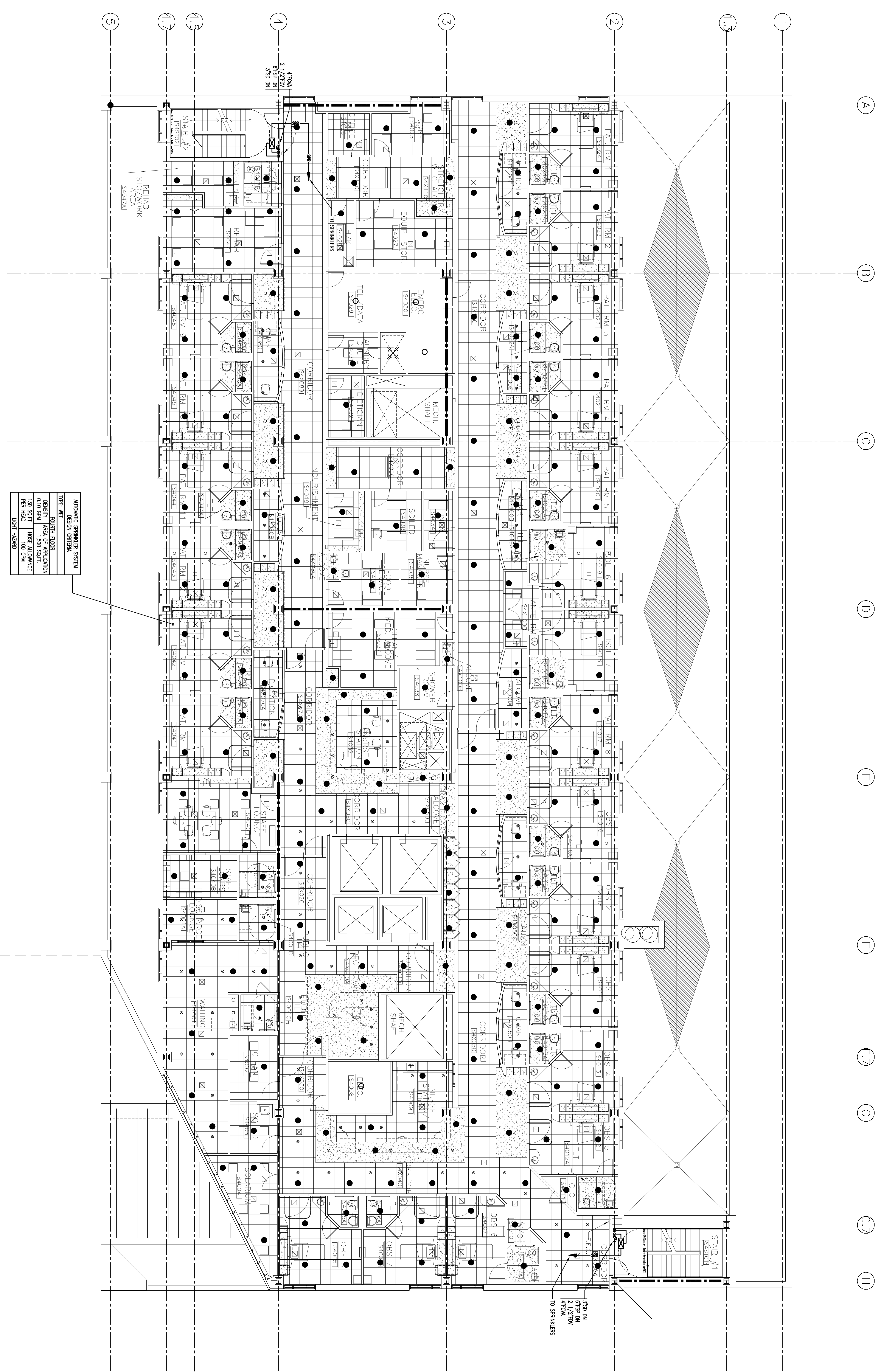
Francis
Coffman

Foley
Hoffmann

Project Title
Mercy Health Core
System of Maine
FORE RIVER SHORT
STAY HOSPITAL
Project Location
2120 Ash Street
Philadelphia, PA 19103
Project Phone
215-568-8250



Project Number
F05-4898
Drawing Title and Number
FIRE PROTECTION
LEVEL 4 FLOOR PLAN
FP1.04



AUTOMATIC SPRINKLER SYSTEM

DESIGN CRITERIA	
TYPE: WET SIGNAL, ES-CORE	
DENSITY: 0.10 GPM	AREA OF APPLICATION: 1,500 SQ. FT.
PER HEAD: 1.30 SQ. FT.	HOSE ALLOWANCE: PER HEAD
TEST HEAD: 100 GPM	TEST HEAD: 100 GPM