

Consultant

CH2M HILL
728 Main Street, Suite 806
Portland, ME 04101
Phone: (207) 775-1121
Fax: (207) 879-0898

Consultant

ASSOCIATE ARCHITECT/STRUCTURAL ENGINEER
SMRT
One State St., Box 618
Portland, ME 04101
Phone: (207) 772-3846
Fax: (207) 772-1070

Consultant

MECHANICAL/ELECTRICAL ENGINEER
Burd, Bost + Atkins Consulting Engineers, LLC
1111 Main Street, Suite 806
Portland, ME 04101
Phone: (207) 772-3846
Fax: (207) 772-1070

Consultant

EQUIPMENT PLANNING
M&E
1803 General George Patton Drive
Franklin, Tennessee 37067
Phone: (615) 376-3114
Fax: (615) 376-3114

Consultant

CONSTRUCTION MANAGER
Hoffmann
7 Johnson Wharfway
Portland, ME 04101
Phone: (407) 456-5595
Fax: (407) 456-5516

Consultant

Francis
1808 West End Ave. Suite 1400
Nashville, Tennessee 37203
Phone: (615) 321-5591
Fax: (615) 321-5589

Consultant

Caufman
117/10/06 Final-Issued for Construction
Date: 11/10/06
Drawn By: MF
Scale: 1/8" = 1'-0"

Consultant

Foley
2129 Ash Street
Philadelphia, PA 19103
Phone: (215) 568-8250

Consultant

Hoffmann
2129 Ash Street
Philadelphia, PA 19103
Phone: (215) 568-8250

Project Title

Mercy Health Core System of Maine
FORE RIVER SHORT STAY HOSPITAL

Project Title

MERCY

Project Title

MERCY

Project Title

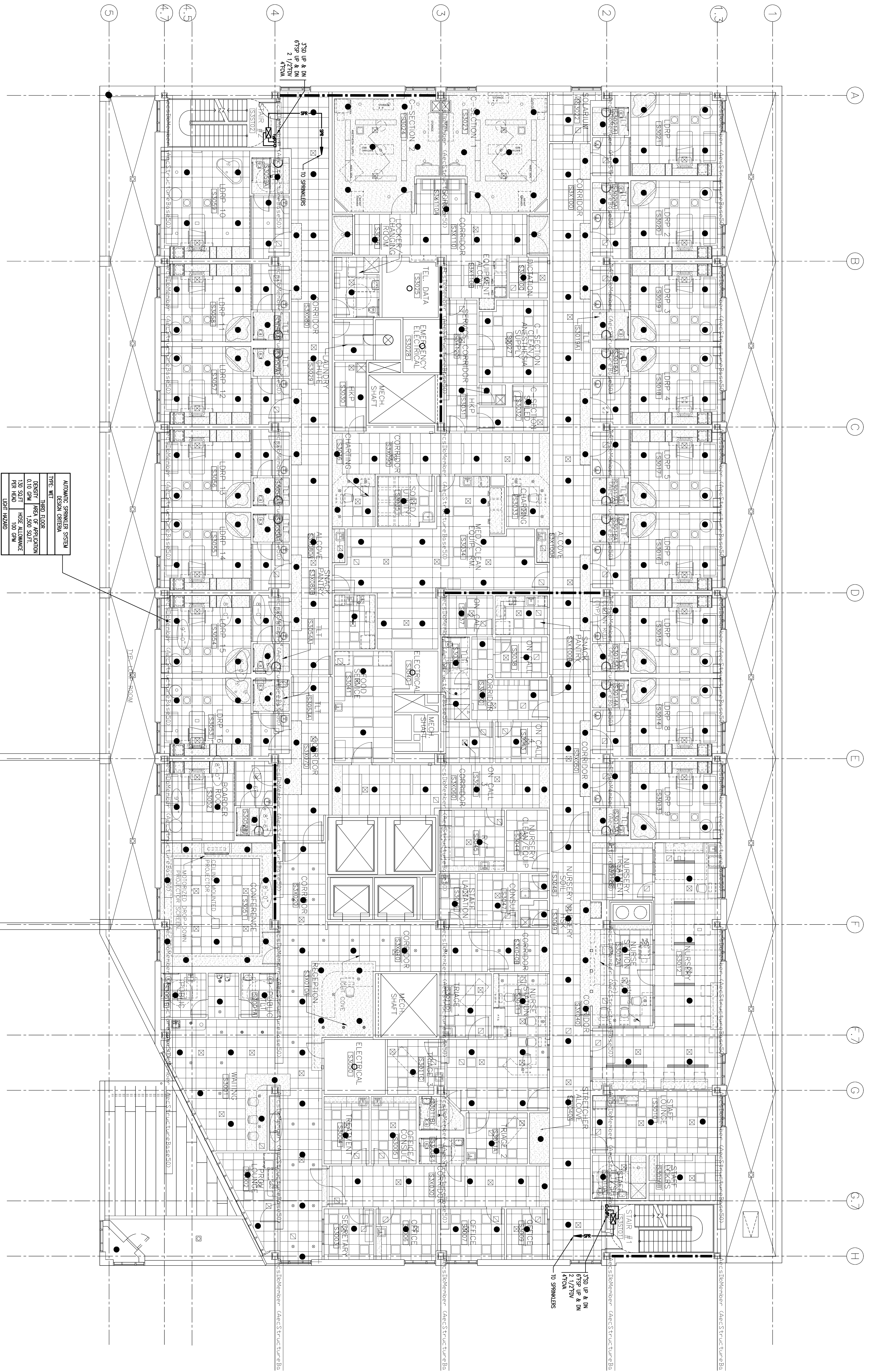
MERCY

Project Title

MERCY

Project Title

FP1.03



| AUTOMATIC SPRINKLER SYSTEM | |
|----------------------------|--------------|
| DESIGN CRITERIA | |
| TYPE | WET |
| TEMPERATURE | 150°F |
| DENSITY | 0.10 GPM |
| AREA OF APPLICATION | 1,500 SQ.FT. |
| HOSE ALLOWANCE | 100 GPM |
| PER HEAD | 1.00 GPM |
| LISTED | UL-1424 |