

**Consultant**  
**OWNER**  
 Delcon-Hoffman Associates, Inc.  
 726 Main Street, Suite 8  
 Philadelphia, PA 19103  
 Phone: (215) 775-1121  
 Fax: (215) 879-0888

**Consultant**  
**ASSOCIATE ARCHITECT/STRUCTURAL ENGINEER**  
 SHoP Architecture  
 1000 Walnut Street, Suite 200  
 Philadelphia, PA 19106  
 Phone: (215) 772-3846  
 Fax: (215) 772-1070

**Consultant**  
**MECHANICAL/ELECTRICAL ENGINEER**  
 B&B, Inc. + Architects Consulting Engineers, LLC  
 311 Arsenal Street  
 Philadelphia, PA 19106  
 Phone: (215) 762-2789  
 Fax: 617-242-9339

**Consultant**  
**EQUIPMENT PLANNING**  
 Equipment Planning  
 1833 General George Patton Drive  
 Franklin, Tennessee 37067  
 Phone: (615) 376-3114  
 Fax: (615) 376-3114

**Consultant**  
**CONSTRUCTION MANAGER**  
 7 Johnson Walkway  
 Philadelphia, PA 19103  
 Phone: (215) 456-8998  
 Fax: (215) 456-5516

**Consultant**  
**MECHANICAL/ELECTRICAL ENGINEER**  
 Hoon Sooden-Strauss, LLC  
 1808 West End Ave. Suite 1400  
 Philadelphia, PA 19103  
 Phone: (610) 321-5591  
 Fax: (610) 321-5889

**Client**  
**Mercy Health Core Stay River Short Stay Hospital**  
 11/10/06 Final-issued for Construction  
 Drawn By: NJP  
 Scale: 1/8" = 1'-0"

**Francis**

**Cauffman**

**Foley**

**Hoffmann**

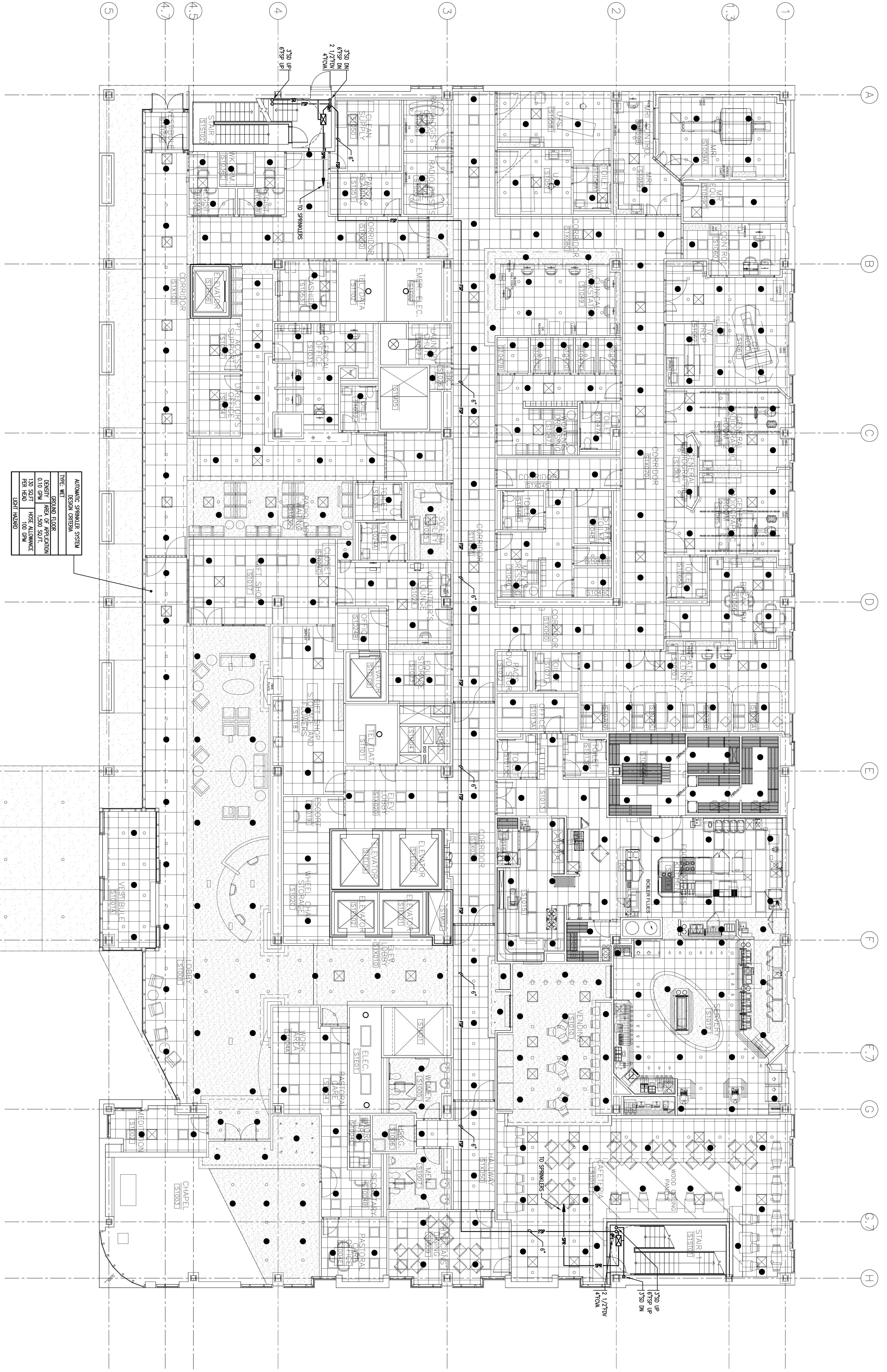
**Project Title**  
 Mercy Health Core  
 System of Maine  
 FORE RIVER SHORT  
 STAY HOSPITAL



**Project Number**  
 F05-4898

**Drawing Title**  
 FIRE PROTECTION PLAN  
 LEVEL 1 FLOOR PLAN

**FP1.01**



**1** FIRST FLOOR PLAN  
 A1.01 1/8" = 1'-0"

AUTOMATIC SPRINKLER SYSTEM	
DESIGN CRITERIA	
TYPE	WET
DESIGN	CRITERIA
TEMPERATURE	150°F
NOSE ALLOWANCE	100 GPM
PER HEAD	100 GPM
LIST	HAZARD