

Consultant
 Civil Engineer
 DeLone-Hoffman Associates, Inc.
 726 Main Street, Suite 406
 Portland, Maine 04106
 Phone: (207) 775-1121
 Fax: (207) 879-0888

Consultant
 ASPECT ARCHITECT/STRUCTURAL ENGINEER
 ASPECT ARCHITECT/STRUCTURAL ENGINEER
 1000 State St., Box 618
 Portland, Maine 04106
 Phone: (207) 772-3846
 Fax: (207) 772-1070

Consultant
 MECHANICAL/ELECTRICAL ENGINEER
 Bond, Rog + Aronson Consulting Engineers, LLC
 311 Arsenal Street
 Portland, Maine 04102
 Phone: (207) 754-0012
 Fax: 617-924-9339

Consultant
 EQUIPMENT PLANNING
 Equipment Planning
 1883 General George Patton Drive
 Franklin, Tennessee 37067
 Phone: (615) 376-3114
 Fax: (615) 376-3114

Consultant
 CONSTRUCTION MANAGER
 Construction Manager
 7 Johnson Walkway
 Portland, Maine 04103
 Phone: (407) 456-8908
 Fax: (407) 456-5516

Consultant
 Interior Design
 Interior Designers, LLC
 1808 West End Ave. Suite 1400
 Portland, Maine 04102
 Phone: (615) 321-5591
 Fax: (615) 321-5889

It is the responsibility of the Construction Manager/General Contractor and all other parties to accept conditions of prior work by retained trades before proceeding with any work.

Date
 11/10/06 Final-Issued for Construction
 Drawn By
 NJP
 Scale
 1/8" = 1'-0"

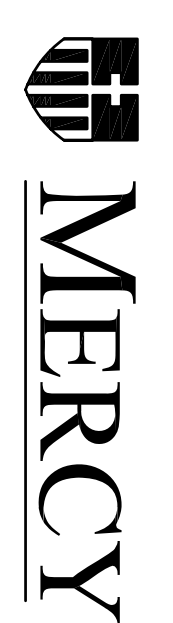
Francis

Cauffman

Foley

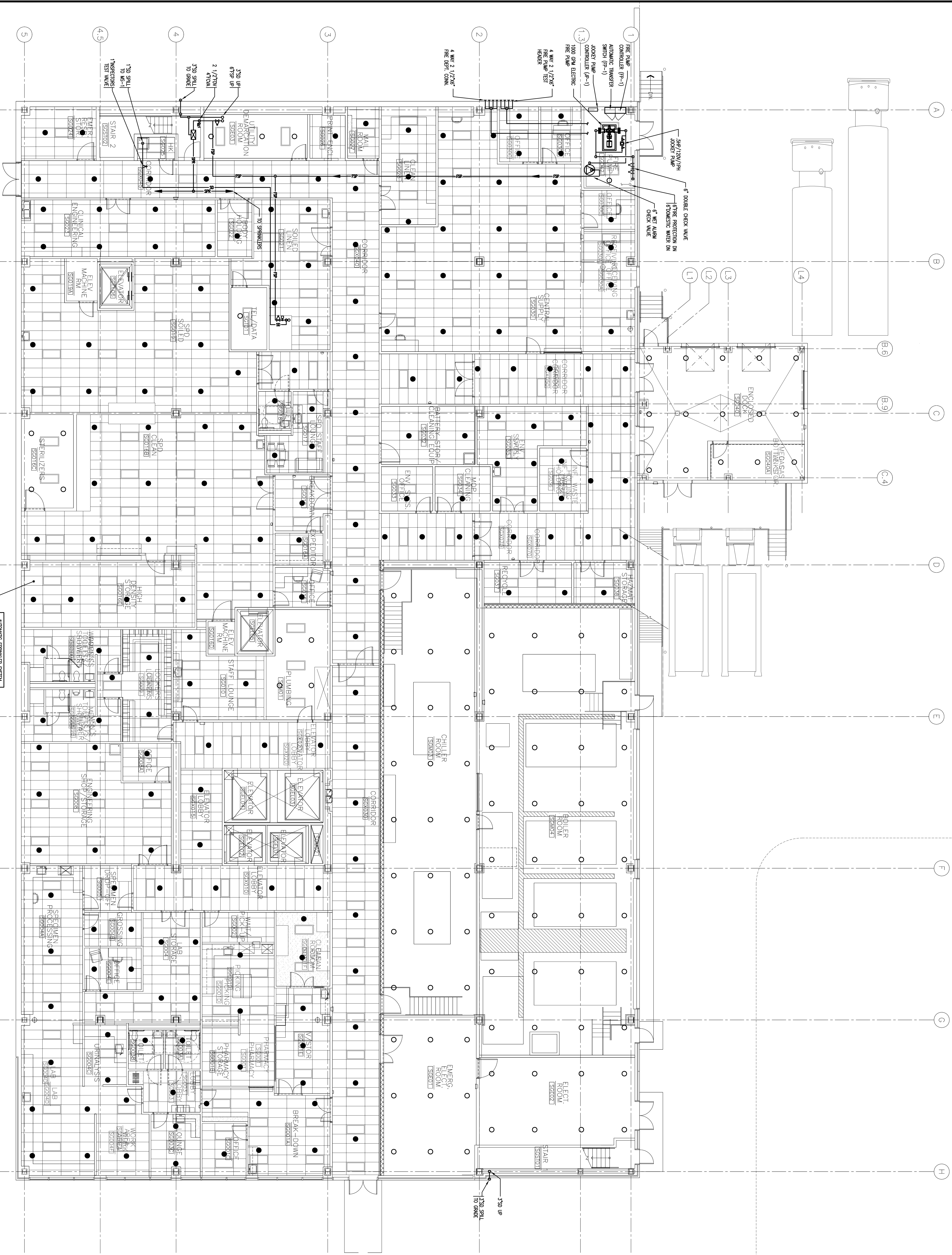
Hoffmann

Project Title
 Fore River Short Stay Hospital
 Project Location
 3129 Ash Street
 Philadelphia, PA 19103
 Project Number
 F05-4898
 Drawing Title
 Fire Protection
 GROUND FLOOR PLAN



Mercy Health Care
 System of Maine
 FORE RIVER SHORT
 STAY HOSPITAL

FP1.00



AUTOMATIC SPRINKLER SYSTEM	
DESIGN CRITERIA	
TYPE: WET	DESIGN CRITERIA
DESIGN K: 0.20 GPM	MINIMUM K: 0.20 GPM
DESIGN AREA: 2000 SQ.FT.	MINIMUM AREA: 2000 SQ.FT.
DESIGN RISK: 100 GPM	MINIMUM RISK: 100 GPM
DESIGN ALLOWANCE: 100 GPM	MINIMUM ALLOWANCE: 100 GPM
DESIGN RISK: 100 GPM	MINIMUM RISK: 100 GPM
DESIGN ALLOWANCE: 100 GPM	MINIMUM ALLOWANCE: 100 GPM

1 GROUND FLOOR PLAN
 1/8" = 1'-0"