

Consultant
CIVIL ENGINEER
DeLuca-Hoffman Associates, Inc.
778 Main Street, Suite 8
South Portland, ME 04106
Phone: (207) 775-1121
Fax: (207) 879-0896

Consultant
ASSOCIATE ARCHITECT/STRUCTURAL ENGINEER
SMRT
144 Fors Street P.O. Box 618
Portland, Maine 04104
Phone: (207) 772-3846
Fax: (207) 772-1070

Consultant
MECHANICAL/ELECTRICAL ENGINEER
Bord, Rao + Athanas Consulting Engineers, LLC
The Arsenal on the Chimes
311 Arsenal Street
Watertown, MA 02472-5789
Phone: 617.254.0018
Fax: 617.924.9339

Consultant
EQUIPMENT PLANNING
Gene Burton & Associates
1893 General George Patton Drive
Franklin, Tennessee 37067
Phone: (615) 376-3100
Fax: (615) 376-3114

Consultant
CONSTRUCTION MANAGER
Sibane Building Company
7 Jackson Walkway
Providence, Rhode Island 02903
Phone: (401) 456-5905
Fax: (401) 456-5516

Consultant
FOOD SERVICE
Inman Foodservice, LLC
1808 West End Ave, Suite 1400
Nashville, TN 37203
Phone: (615) 321-5591
Fax: (615) 321-5689

It is the responsibility of the Construction Manager/General Contractor and all Sub-Contractors to verify all dimensions and accept conditions of prior work by related trades before proceeding with any work.

Date
11/10/06 Final-Issued for Constructio
Drawn By

Scale
1/8" = 1'-0"

Francis

Cauffman

Foley

Hoffmann

Francis Cauffman
Foley Hoffmann
Architects Ltd. 2120 Arch Street
Philadelphia, PA 19103
215-568-8250

Project Title

Mercy Health Care
System of Maine

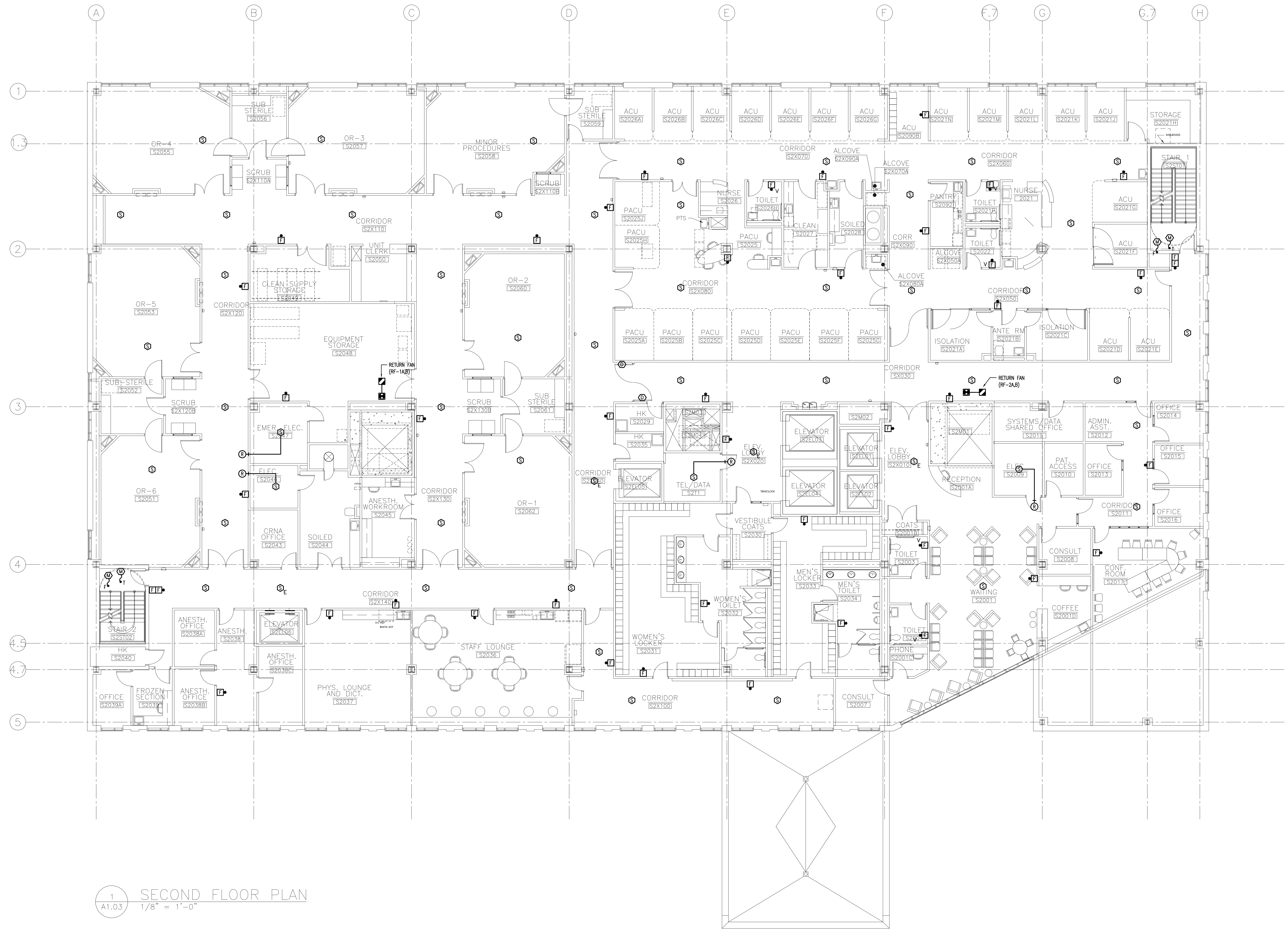
FORE RIVER SHORT
STAY HOSPITAL



Project Number
F05-4898

Drawing Title and Number
ELECTRICAL
FIRE ALARM PLAN
LEVEL 2

E3-2



1 SECOND FLOOR PLAN
A1.03 1/8" = 1'-0"

J:\WORK\252300\CAD\ELECT\FIRE-LEVEL-2.DWG 11-09-2006 1:54:16 - DWG