

- Consultant
 CIVIL ENGINEER
 DeLuca-Hoffman Associates, Inc.
 778 Main Street, Suite 8
 South Portland, ME 04106
 Phone: (207) 775-1121
 Fax: (207) 679-0898
- Consultant
 ASSOCIATE ARCHITECT/STRUCTURAL ENGINEER
 SMRT
 144 Fors Street P.O. Box 618
 Portland, Maine 04104
 Phone: (207) 772-3846
 Fax: (207) 772-1070
- Consultant
 MECHANICAL/ELECTRICAL ENGINEER
 Bard, Rao + Athanas Consulting Engineers, LLC
 The Arsenal on the Clashes
 311 Arsenal Street
 Watertown, MA 02472-5789
 Phone: 617.254.0016
 Fax: 617.924.9339
- Consultant
 EQUIPMENT PLANNING
 Gene Burton & Associates
 1893 General George Patton Drive
 Franklin, Tennessee 37067
 Phone: (615) 376-3100
 Fax: (615) 376-3114
- Consultant
 CONSTRUCTION MANAGER
 Gilbane Building Company
 7 Jackson Walkway
 Providence, Rhode Island 02903
 Phone: (401) 456-5905
 Fax: (401) 456-5516
- Consultant
 FOOD SERVICE
 Inman Foodservice, LLC
 1808 West End Ave. Suite 1400
 Nashville, TN 37203
 Phone: (615) 321-5591
 Fax: (615) 321-5689

It is the responsibility of the Construction Manager/General Contractor and all Sub-Contractors to verify all dimensions and accept conditions of prior work by related trades before proceeding with any work.

Date
 11/10/06 Final-Issued for Constructi
 Drawn By
 XXX
 Scale
 1"=60'-0"

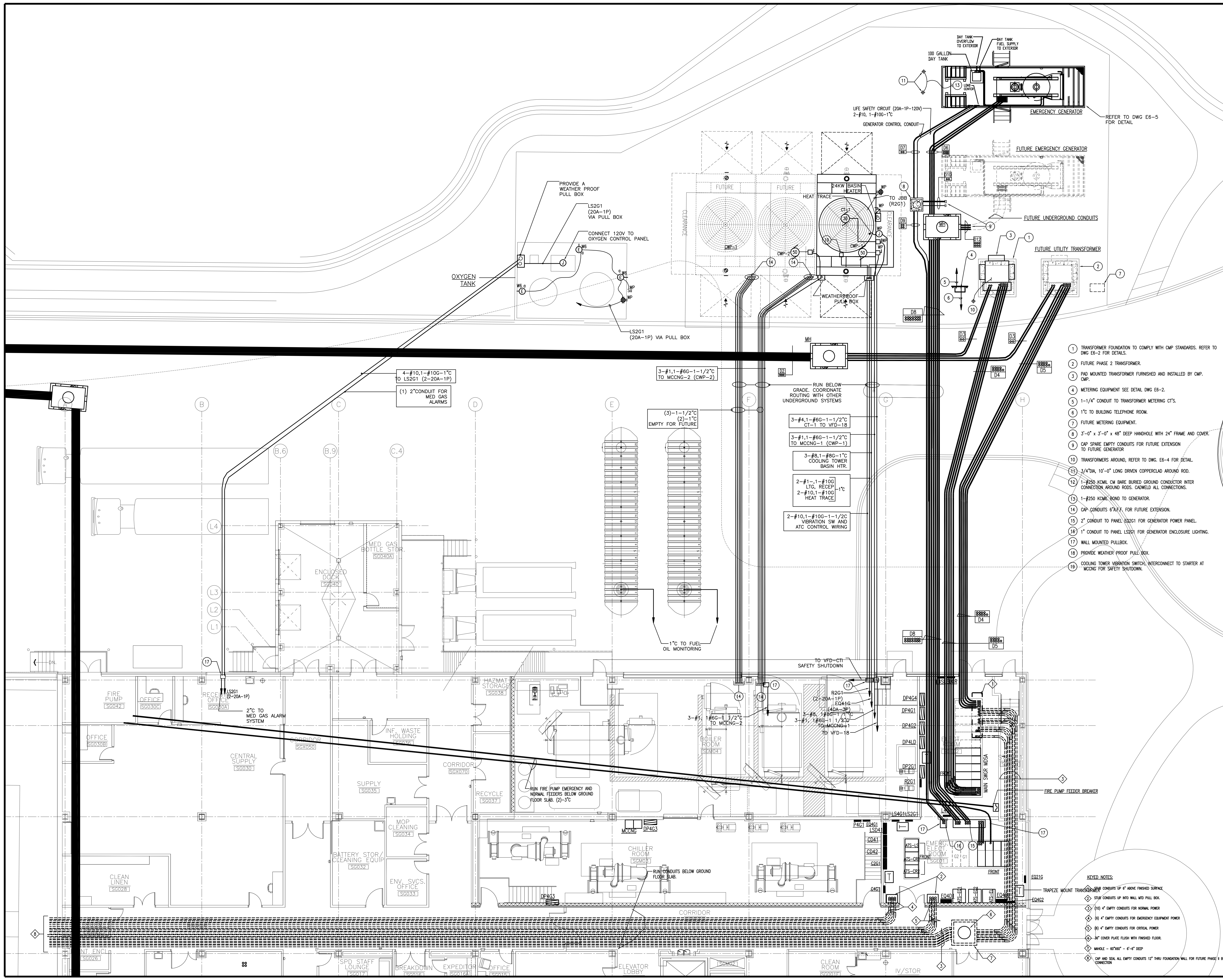
Francis
 Cauffman
 Foley
 Hoffmann

Francis Cauffman Architects Ltd. 2120 Arch Street Philadelphia, PA 19103 215-568-8250

Project Title
 Mercy Health Care System of Maine
 FORE RIVER SHORT STAY HOSPITAL

MERCY

Project Number
 F05-4898
 Drawing Title and Number
 ELECTRICAL
 PARTIAL SITE PLAN
E-02



- 1 TRANSFORMER FOUNDATION TO COMPLY WITH CMP STANDARDS. REFER TO DWG E6-2 FOR DETAILS.
- 2 FUTURE PHASE 2 TRANSFORMER.
- 3 PAD MOUNTED TRANSFORMER FURNISHED AND INSTALLED BY CMP.
- 4 METERING EQUIPMENT SEE DETAIL DWG E6-2.
- 5 1-1/4" CONDUIT TO TRANSFORMER METERING CT'S.
- 6 1" TO BUILDING TELEPHONE ROOM.
- 7 FUTURE METERING EQUIPMENT.
- 8 3'-0" x 3'-0" x 48" DEEP HANDHOLE WITH 24" FRAME AND COVER.
- 9 CAP SPARE EMPTY CONDUITS FOR FUTURE EXTENSION TO FUTURE GENERATOR.
- 10 TRANSFORMERS AROUND, REFER TO DWG. E6-4 FOR DETAIL.
- 11 3/4" DIA. 10'-0" LONG DRIVEN COPPERCLAD AROUND ROD.
- 12 1-#250 KCMIL CM BARE BURIED GROUND CONDUCTOR INTER CONNECTION AROUND RODS. CADWELD ALL CONNECTIONS.
- 13 1-#250 KCMIL BOND TO GENERATOR.
- 14 CAP CONDUITS 6" A/F, FOR FUTURE EXTENSION.
- 15 2" CONDUIT TO PANEL EQ201 FOR GENERATOR POWER PANEL.
- 16 1" CONDUIT TO PANEL LS201 FOR GENERATOR ENCLOSURE LIGHTING.
- 17 WALL MOUNTED PULLBOX.
- 18 PROVIDE WEATHER PROOF PULL BOX.
- 19 COOLING TOWER VIBRATION SWITCH, INTERCONNECT TO STARTER AT MCCNG FOR SAFETY SHUTDOWN.

- KEYED NOTES:
- CONDUITS UP 6" ABOVE FINISHED SURFACE
 - STRAP CONDUITS UP INTO WALL W/ID PULL BOX
 - (10) 4" EMPTY CONDUITS FOR NORMAL POWER
 - (8) 4" EMPTY CONDUITS FOR EMERGENCY EQUIPMENT POWER
 - (6) 4" EMPTY CONDUITS FOR CRITICAL POWER
 - 3/4" COVER PLATE FLUSH WITH FINISHED FLOOR.
 - MINIMUM - 60" MAX - 6'-4" DEEP
 - CAP AND SEAL ALL EMPTY CONDUITS 12" THRU FOUNDATION WALL FOR FUTURE PHASE 1 BUILDING CONNECTION