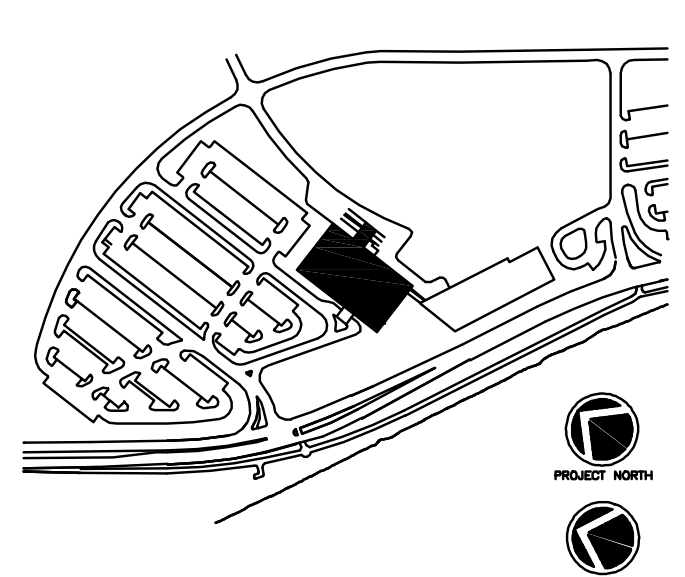
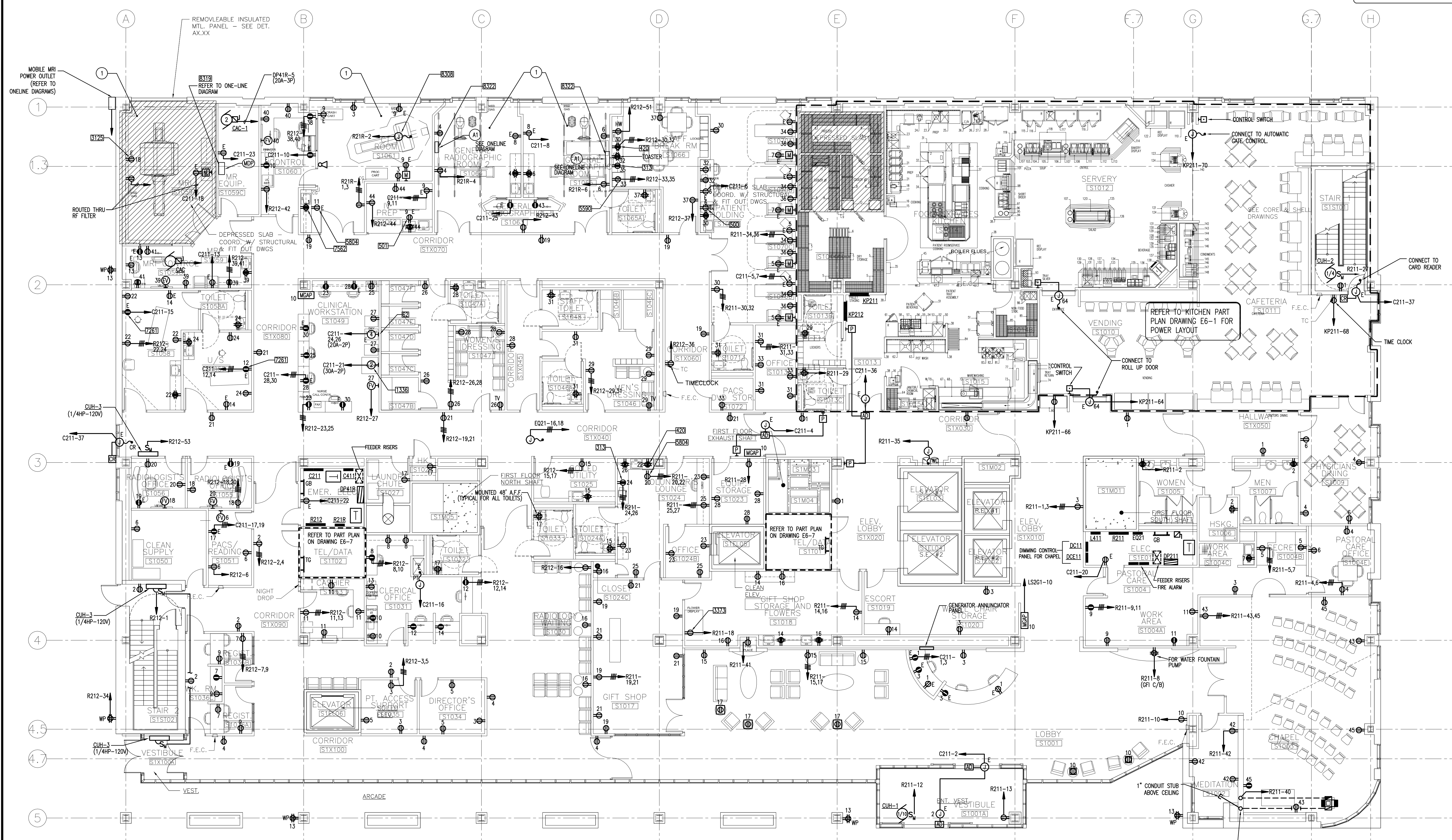


KEY NOTES:
1 IN ADDITION TO THE POWER INDICATED IN THESE ROOMS, ELECTRICAL CONTRACTOR SHALL REFER TO MANUFACTURERS INSTALLATION DRAWINGS FOR EQUIPMENT INCLUDING BUT NOT LIMITED TO WIRING, LIGHTS, DOOR INTERLOCKS, EPO'S, POWER AND CONTROL WIRING, CONDUIT, ETC. FOR A COMPLETE INSTALLATION.



- Consultant
CIVIL ENGINEER
DeLucco-Hoffman Associates, Inc.
778 Main Street, Suite 8
South Portland, ME 04106
Phone: (207) 775-1121
Fax: (207) 879-0896
 - Consultant
ASSOCIATE ARCHITECT/STRUCTURAL ENGINEER
SMRT
144 Fore Street P.O. Box 618
Portland, Maine 04104
Phone: (207) 772-3846
Fax: (207) 772-1070
 - Consultant
MECHANICAL/ELECTRICAL ENGINEER
The Arsenal on the Charles
311 Arsenal Street
Watertown, MA 02472-5789
Phone: 617.254.0016
Fax: 617.924.9339
 - Consultant
EQUIPMENT PLANNING
Gene Burton & Associates
1893 General George Patton Drive
Franklin, Tennessee 37067
Phone: (615) 376-3100
Fax: (615) 376-3114
 - Consultant
CONSTRUCTION MANAGER
Gilbane Building Company
7 Jackson Walkway
Providence, Rhode Island 02903
Phone: (401) 456-5905
Fax: (401) 456-5516
 - Consultant
FOOD SERVICE
Inman Foodservice, LLC
1808 West End Ave. Suite 1400
Nashville, TN 37203
Phone: (615) 321-5591
Fax: (615) 321-5689
- It is the responsibility of the Construction Manager/General Contractor and all Sub-Contractors to verify all dimensions and accept conditions of prior work by related trades before proceeding with any work.

Date
11/10/06 Final-Issued for Constructi
Drawn By

Scale
1/8" = 1'-0"

Francis
Cauffman
Foley
Hoffmann

Francis Cauffman 2120 Arch Street
Foley Hoffmann Philadelphia, PA 19103
Architects Ltd. 215-568-8250

Project Title
MERCY Health Care System of Maine
FORE RIVER SHORT STAY HOSPITAL



Project Number
F05-4898
Drawing Title and Number
ELECTRICAL POWER PLAN LEVEL 1

J:\JOBS\252000\DWG\ELEC\ONE-PWR-LEVEL 1.DWG 11-08-2006 11:19:11 - DLW

1 FIRST FLOOR PLAN
A1.01 1/8" = 1'-0"