

Consultant  
CIVIL ENGINEER  
DeLuca-Hoffman Associates, Inc.  
778 Main Street, Suite 8  
South Portland, ME 04106  
Phone: (207) 775-1121  
Fax: (207) 879-0896

Consultant  
ASSOCIATE ARCHITECT/STRUCTURAL ENGINEER  
SMRT  
144 Fore Street P.O. Box 618  
Portland, Maine 04104  
Phone: (207) 772-3846  
Fax: (207) 772-1070

Consultant  
MECHANICAL/ELECTRICAL ENGINEER  
Bord, Rao + Athanas Consulting Engineers, LLC  
The Arsenal on the Charles  
311 Arsenal Street  
Watertown, MA 02472-5789  
Phone: 617.254.0016  
Fax: 617.924.9339

Consultant  
EQUIPMENT PLANNING  
Gene Burton & Associates  
1893 General George Patton Drive  
Franklin, Tennessee 37067  
Phone: (615) 376-3100  
Fax: (615) 376-3114

Consultant  
CONSTRUCTION MANAGER  
Gibson Building Company  
7 Jackson Walkway  
Providence, Rhode Island 02903  
Phone: (401) 456-5905  
Fax: (401) 456-5516

Consultant  
FOOD SERVICE  
Inman Foodservice, LLC  
1808 West End Ave, Suite 1400  
Nashville, TN 37203  
Phone: (615) 321-5591  
Fax: (615) 321-5689

It is the responsibility of the Construction Manager/General Contractor and all Sub-Contractors to verify all dimensions and accept conditions of prior work by related trades before proceeding with any work.

Date  
11/10/06 Final-Issued for Construct  
Drawn By

Scale  
NONE

Francis

Cauffman

Foley

Hoffmann

Francis Cauffman 2120 Arch Street  
Foley Hoffmann Philadelphia, PA 19103  
Architects Ltd. 215-568-8250

Project Title

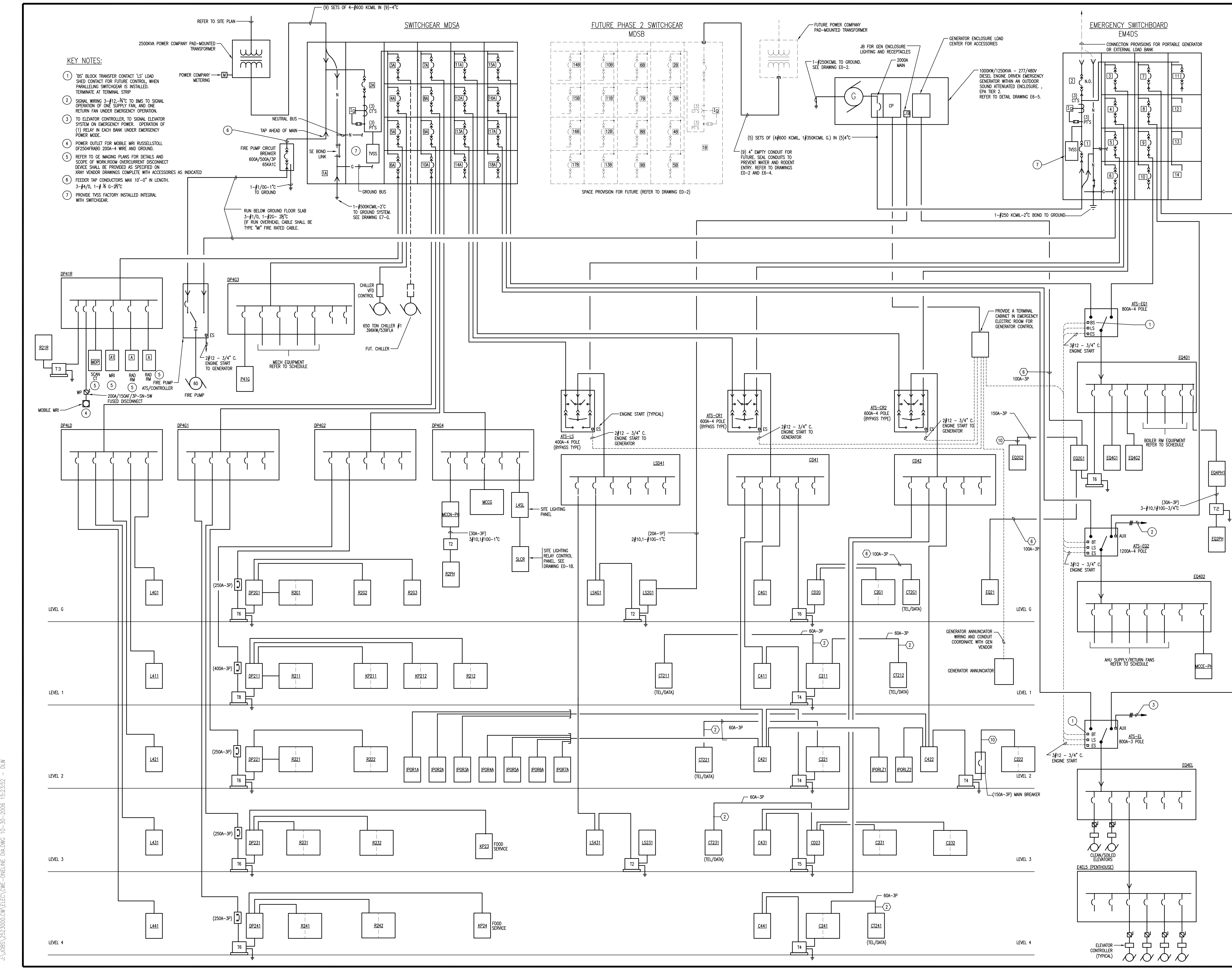
Mercy Health Care  
System of Maine  
FORE RIVER SHORT  
STAY HOSPITAL



Project Number  
F05-4898

Drawing Title and Number  
ELECTRICAL  
ONE-LINE  
DIAGRAM

E4-1



- KEY NOTES:**
1. 'S' BLOCK TRANSFER CONTACT 'LS' LOAD SHED CONTACT FOR FUTURE CONTROL. WHEN PARALLELING SWITCHGEAR IS INSTALLED, TERMINATE AT TERMINAL STRIP.
  2. SIGNAL WIRING 3-#12-2#C TO BMS TO SIGNAL OPERATION OF ONE SUPPLY FAN, AND ONE RETURN FAN UNDER EMERGENCY OPERATION.
  3. TO ELEVATOR CONTROLLER, TO SIGNAL ELEVATOR SYSTEM ON EMERGENCY POWER. OPERATION OF (1) RELAY IN EACH BANK UNDER EMERGENCY POWER MODE.
  4. POWER OUTLET FOR MOBILE MRI RUSSELLSTOLL DP2504FRAB0 200A-4 WIRE AND GROUND.
  5. REFER TO GE IMAGING PLANS FOR DETAILS AND SCOPE OF WORK-ROOM OVERCURRENT DISCONNECT DEVICE SHALL BE PROVIDED AS SPECIFIED ON XRAY VENDOR DRAWINGS COMPLETE WITH ACCESSORIES AS INDICATED.
  6. FEEDER TAP CONDUCTORS MAX 10'-0" IN LENGTH. 3-#4/0, 1-# 1/2 G-2#C.
  7. PROVIDE TVSS FACTORY INSTALLED INTEGRAL WITH SWITCHGEAR.

J:\JOBS\252000\ONE-LINE\ONE-LINE.DWG 10-30-2006 15:23:52 - DLW