

Consultant  
**CIVIL ENGINEER**  
 DeLuca-Hoffman Associates, Inc.  
 778 Main Street, Suite 8  
 South Portland, ME 04106  
 Phone: (207) 775-1121  
 Fax: (207) 879-0896

Consultant  
**ASSOCIATE ARCHITECT/STRUCTURAL ENGINEER**  
 SMRT  
 144 Fore Street P.O. Box 618  
 Portland, Maine 04104  
 Phone: (207) 772-3846  
 Fax: (207) 772-1070

Consultant  
**MECHANICAL/ELECTRICAL ENGINEER**  
 The Arsenal on the Charles  
 311 Arsenal Street  
 Watertown, MA 02472-5789  
 Phone: 617.254.0016  
 Fax: 617.924.9339

Consultant  
**EQUIPMENT PLANNING**  
 Gene Burton & Associates  
 1893 General George Patton Drive  
 Franklin, Tennessee 37067  
 Phone: (615) 376-3100  
 Fax: (615) 376-3114

Consultant  
**CONSTRUCTION MANAGER**  
 Gilbane Building Company  
 7 Jackson Walkway  
 Providence, Rhode Island 02903  
 Phone: (401) 456-5905  
 Fax: (401) 456-5516

Consultant  
**FOOD SERVICE**  
 Inman Foodservice, LLC  
 1808 West End Ave, Suite 1400  
 Nashville, TN 37203  
 Phone: (615) 321-5591  
 Fax: (615) 321-5689

It is the responsibility of the Construction Manager/General Contractor and all Sub-Contractors to verify all dimensions and accept conditions of prior work by related trades before proceeding with any work.

Date  
 11/10/06 Final-Issued for Construction  
 Drawn By

Scale  
 1/8" = 1'-0"

Francis  
 Cauffman  
 Foley  
 Hoffmann

Francis Cauffman 2120 Arch Street  
 Foley Hoffmann Philadelphia, PA 19103  
 Architects Ltd. 215-568-8250

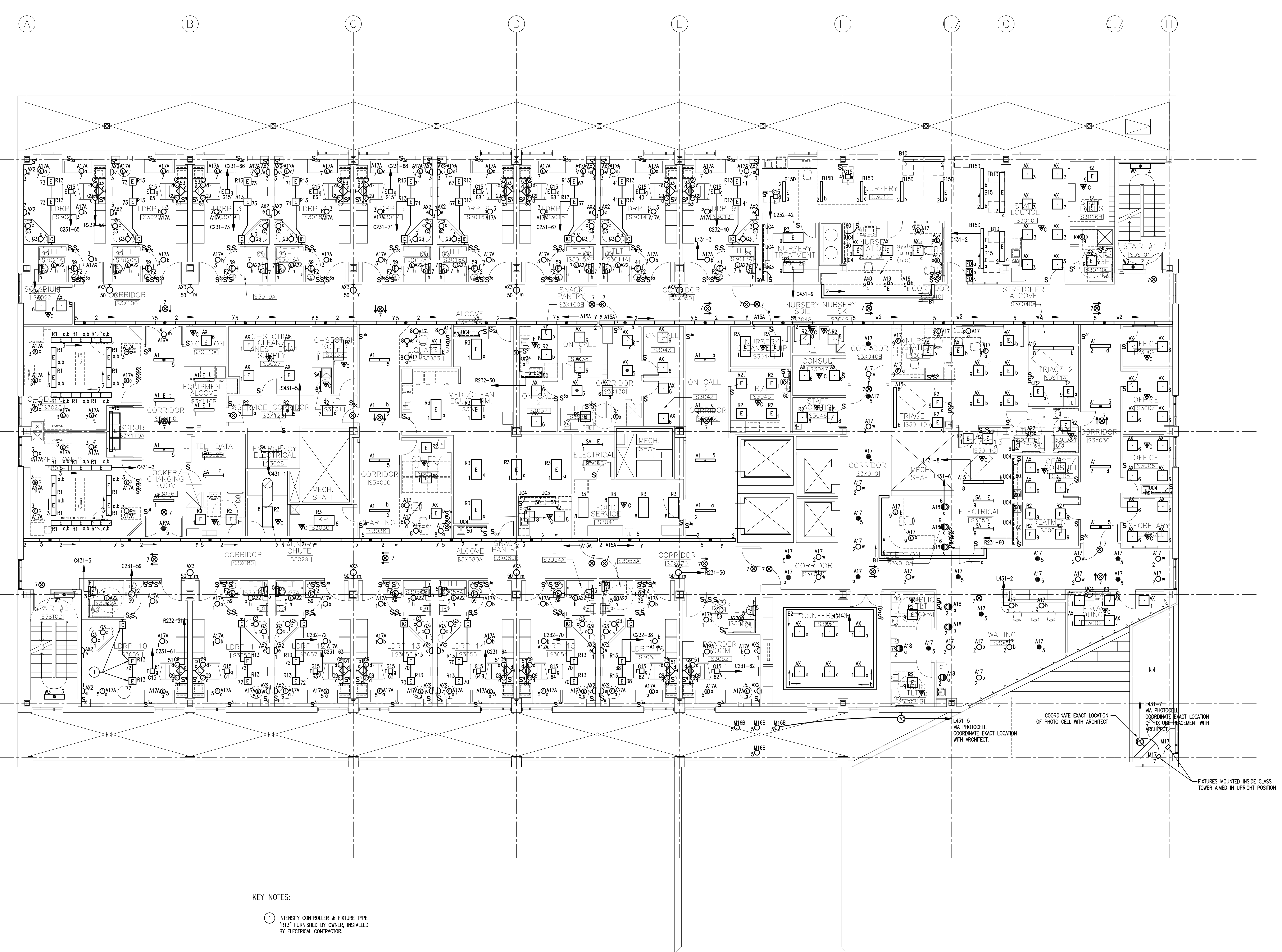
Project Title  
 Mercy Health Care  
 System of Maine  
 FORE RIVER SHORT  
 STAY HOSPITAL



Project Number  
 F05-4898

Drawing Title and Number  
 ELECTRICAL  
 LIGHTING PLAN  
 LEVEL 3

E2-3



**KEY NOTES:**

① INTENSITY CONTROLLER & FIXTURE TYPE  
 "R13" FURNISHED BY OWNER, INSTALLED  
 BY ELECTRICAL CONTRACTOR.

J:\JOBS\2523000\DWG\ELEC\LTC-LEVEL 3.DWG 11-07-2006 14:46:22 - DLW