

- Consultant
 CIVIL ENGINEER
 DeLuca-Hoffman Associates, Inc.
 778 Main Street, Suite 8
 South Portland, ME 04106
 Phone: (207) 775-1121
 Fax: (207) 879-0896
- Consultant
 ASSOCIATE ARCHITECT/STRUCTURAL ENGINEER
 SMRT
 144 Fore Street P.O. Box 618
 Portland, Maine 04104
 Phone: (207) 772-3846
 Fax: (207) 772-1070
- Consultant
 MECHANICAL/ELECTRICAL ENGINEER
 The Arsenal on the Charles
 311 Arsenal Street
 Watertown, MA 02472-5789
 Phone: 617.254.0016
 Fax: 617.924.9339
- Consultant
 EQUIPMENT PLANNING
 Gene Burton & Associates
 1893 General George Patton Drive
 Franklin, Tennessee 37067
 Phone: (615) 376-3100
 Fax: (615) 376-3114
- Consultant
 CONSTRUCTION MANAGER
 Gilbane Building Company
 7 Jackson Walkway
 Providence, Rhode Island 02903
 Phone: (401) 456-5905
 Fax: (401) 456-5516
- Consultant
 FOOD SERVICE
 Inman Foodservice, LLC
 1808 West End Ave, Suite 1400
 Nashville, TN 37203
 Phone: (615) 321-5591
 Fax: (615) 321-5689

It is the responsibility of the Construction Manager/General Contractor and all Sub-Contractors to verify all dimensions and accept conditions of prior work by related trades before proceeding with any work.

Date
 11/10/06 Final-Issued for Construction
 Drawn By

Scale
 1/8" = 1'-0"

Francis
 Cauffman
 Foley
 Hoffmann

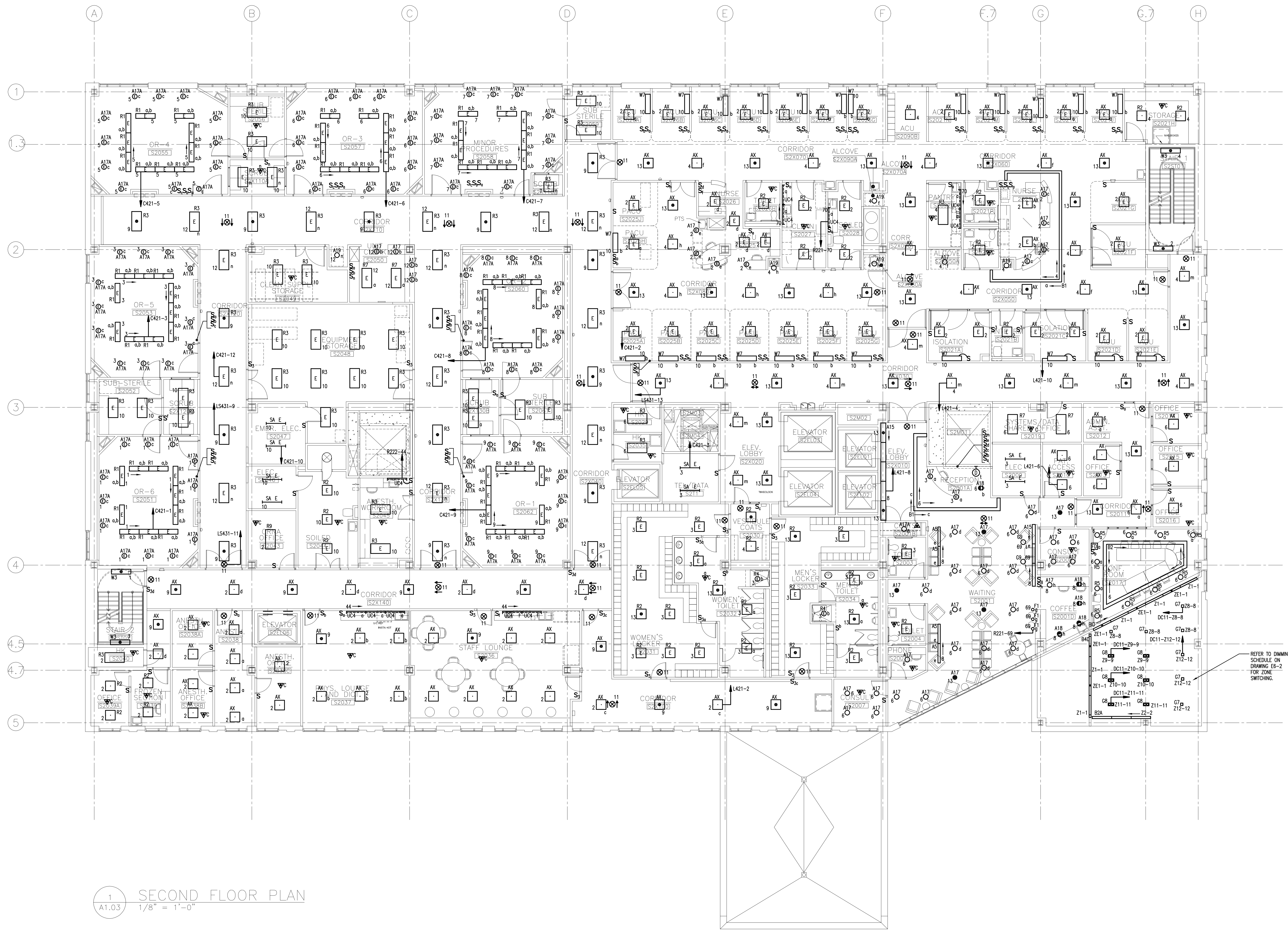
Francis Cauffman 2120 Arch Street
 Foley Hoffmann Philadelphia, PA 19103
 Architects Ltd. 215-568-8250

Project Title
 Mercy Health Care
 System of Maine
 FORE RIVER SHORT
 STAY HOSPITAL



Project Number
 F05-4898
 Drawing Title and Number
 ELECTRICAL
 LIGHTING PLAN
 LEVEL 2

E2-2



1 SECOND FLOOR PLAN
 A1.03 1/8" = 1'-0"

J:\JOBS\252000\DWG\ELEC\LEVEL-2.DWG 11-09-2006 10:06:17 - JH