

LEGEND OF FEEDER SIZES
COPPER CONDUCTORS
FEEDER SYMBOL CONDUCTORS (3 PHASE, 3 WIRE) WITH GROUND RACEWAY SIZE CONDUIT NOMINAL AMPERE RATING

- NOTES:
1. 600KCMIL FEEDERS SHALL BE PROVIDED WITH MAC ADAPTERS AS REQUIRED TO COORDINATE WITH BREAKER LUG SIZES.
2. SEE SPECIFICATIONS FOR ACCEPTABLE CONDUCTOR TYPES.

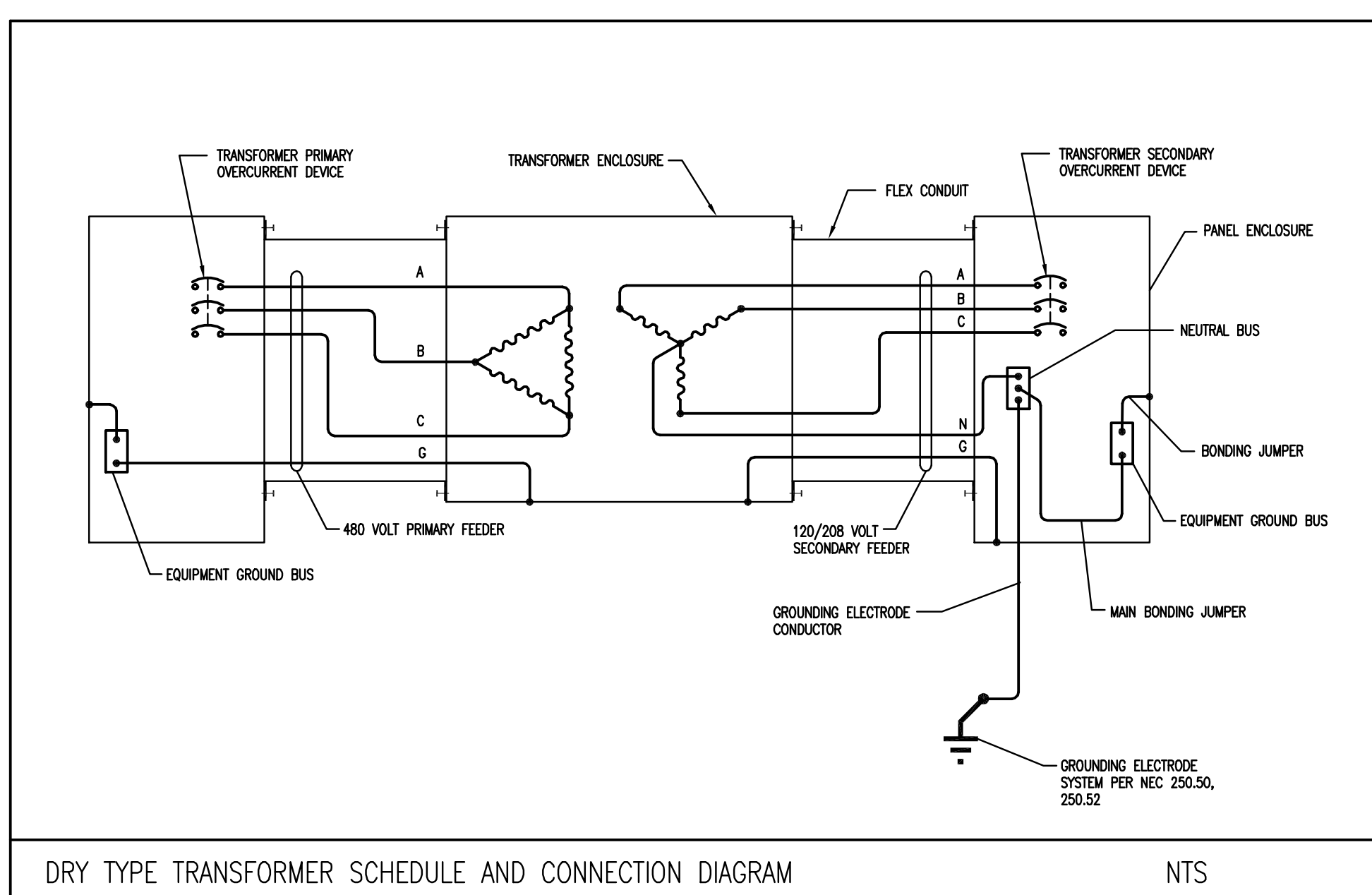
MOTOR WIRING SCHEDULE
FOR SINGLE SPEED, 480 VOLT MOTORS ONLY
HORSE POWER FEEDER - 480VOLT, 3ø, 3WIRE-CU

OPERATING ROOM ISOLATION POWER PANEL SCHEDULE
O.R. NO. O.R. PANEL DESIGNATION KVA RATING PRIMARY VOLTAGE SECONDARY VOLTAGE PRIMARY BREAKER BRANCH BREAKERS NOTES

MOTOR CONTROL CENTER MCC-E-PH SCHEDULE
480 VOLT 3 PHASE 3 WIRE 65K AC
MAIN BUS SIZE: 600 AMPS
ITEM NAMEPLATE HP KW FLA PHASE VOLTS BRANCH CIRCUIT OVERCURRENT DEVICE HMCPC FEEDER C.B. MOTOR CONTROLLER TYPE/SIZE BRANCH CIRCUIT WIRING NOTES

MOTOR CONTROL CENTER MCC-N-PH SCHEDULE
480 VOLT 3 PHASE 3 WIRE 65K AC
MAIN BUS SIZE: 600 AMPS
ITEM NAMEPLATE HP KW FLA PHASE VOLTS BRANCH CIRCUIT OVERCURRENT DEVICE HMCPC FEEDER C.B. MOTOR CONTROLLER TYPE/SIZE BRANCH CIRCUIT WIRING NOTES

MOTOR CONTROL CENTER MCCNG SCHEDULE
480 VOLT 3 PHASE 3 WIRE 65K AC
MAIN BUS SIZE: 600 AMPS
ITEM NAMEPLATE HP KW FLA PHASE VOLTS BRANCH CIRCUIT OVERCURRENT DEVICE HMCPC FEEDER C.B. MOTOR CONTROLLER TYPE/SIZE BRANCH CIRCUIT WIRING NOTES



SCHEDULE OF PANELBOARDS
MANNS (MCO, MLO, MTO) C/B (O, S, B, C) OVERCURRENT DEVICE TYPE/SIZE VOLTAGE (1) POLE (2) POLE (3) POLE 1P SPACE

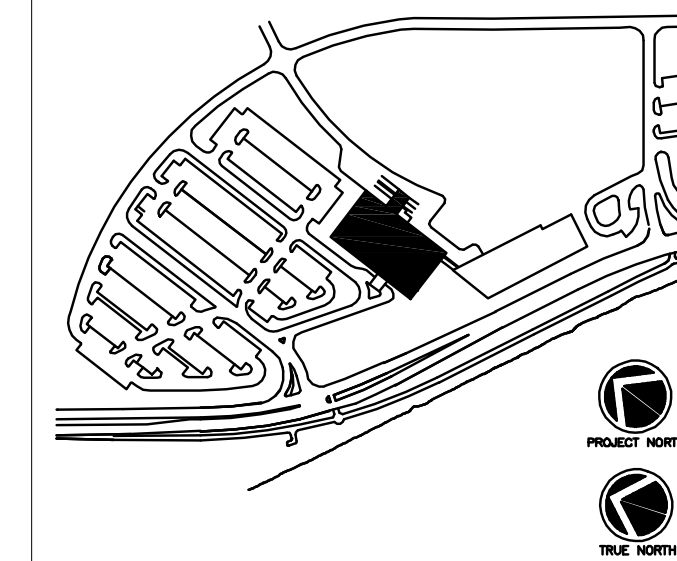
DRY TYPE TRANSFORMER SCHEDULE
SIZE KVA PRIMARY AMPS SECONDARY AMPS 480 VOLT (2) OVERCURRENT 208 VOLT (3) OVERCURRENT 480V PRIMARY FEEDER 120/208V SECONDARY FEEDER GROUNDING (4) CONDUCTOR

TRANSFORMER SCHEDULE NOTES:

- 1. ALL PHASE AND NEUTRAL CONDUCTOR SIZES ARE BASED ON COPPER CONDUCTORS PER N.E.C. TABLE 310-16.
2. MANUFACTURER'S SELECTION FOR THE TYPE OF PRIMARY BREAKER (THERMAL MAGNETIC VS. SOLID STATE) SHALL ENSURE COORDINATION WITH TRANSFORMER IN-RUSH CURRENT. IF MIS-COORDINATION IS IDENTIFIED BY THE COORDINATION STUDY, THE MANUFACTURER SHALL REPLACE THE DEVICE WITH A DEVICE THAT WILL PROPERLY COORDINATE, AT NO ADDITIONAL COST.
3. SECONDARY OVERCURRENT PROTECTION SHALL BE LOCATED WITHIN A PANELBOARD (MAIN BREAKER) OR INDIVIDUALLY MOUNTED CIRCUIT BREAKER. THE SECONDARY OVERCURRENT PROTECTION DEVICE SHALL BE LOCATED SUCH THAT THE MAXIMUM LENGTH OF SECONDARY CONDUCTORS DO NOT EXCEED 10'-0".
4. SIZE OF TRANSFORMER BONDING JUMPERS AND GROUNDING ELECTRODE CONDUCTOR.
5. THE GROUNDING ELECTRODE CONDUCTOR SHALL BE UNSPLICED AND INSTALLED AS OPEN WIRING OR RUN IN NON METALLIC (PVC SCHEDULE 40) CONDUIT TO PROTECT IT FROM SEVERE DAMAGE.
6. 600 KCMIL CONDUCTORS AND LARGER SHALL BE PROVIDED WITH MAC ADAPTERS AS REQUIRED TO COORDINATE WITH BREAKER LUG SIZES.

2 = 120/208V - 3ø - 4W S = SURFACE
4 = 277/480V - 3ø - 4W R = RECESSED
1 = 120/208V-1ø-3W PLUS GROUND

Revisions



Consultant
CIVIL ENGINEER
DeLucco-Hoffman Associates, Inc.
778 Main Street, Suite 8
South Portland, ME 04106
Phone: (207) 775-1121
Fax: (207) 879-0896

Consultant
ASSOCIATE ARCHITECT/STRUCTURAL ENGINEER
SMRT
144 Fore Street P.O. Box 618
Portland, Maine 04104
Phone: (207) 772-3846
Fax: (207) 772-1070

Consultant
MECHANICAL/ELECTRICAL ENGINEER
Bard, Rao & Athanas Consulting Engineers, LLC
The Arsenal on the Charles
311 Arsenal Street
Waterbury, MA 02472-5789
Phone: 617.254.0016
Fax: 617.924.9339

Consultant
EQUIPMENT PLANNING
Gene Burton & Associates
1893 General George Patton Drive
Franklin, Tennessee 37067
Phone: (615) 376-3100
Fax: (615) 376-3114

Consultant
CONSTRUCTION MANAGER
Gibbons Building Company
7 Jackson Walkway
Providence, Rhode Island 02903
Phone: (401) 456-5905
Fax: (401) 456-5516

Consultant
FOOD SERVICE
Inman Foodservice, LLC
1808 West End Ave, Suite 1400
Nashville, TN 37203
Phone: (615) 321-5591
Fax: (615) 321-5689

It is the responsibility of the Construction Manager/General Contractor and all Sub-Contractors to verify all dimensions and accept conditions of prior work by related trades before proceeding with any work.

Date
11/10/06 Final-Issued for Constructio
Drawn By

Scale
NONE

Francis

Cauffman

Foley

Hoffmann

Francis Cauffman 2120 Arch Street
Foley Hoffmann Philadelphia, PA 19103
Architects Ltd. 215-568-8250

Project Title

Mercy Health Care
System of Maine

FORE RIVER SHORT
STAY HOSPITAL

MERCY

Project Number
F05-4898

Drawing Title and Number
ELECTRICAL
SCHEDULE OF
PANELBOARDS

E5-3