

Consultant
 CIVIL ENGINEER
 DeLuca-Hoffman Associates, Inc.
 778 Main Street, Suite 8
 South Portland, ME 04106
 Phone: (207) 775-1121
 Fax: (207) 879-0896

Consultant
 ASSOCIATE ARCHITECT/STRUCTURAL ENGINEER
 SMRT
 144 Fore Street P.O. Box 618
 Portland, Maine 04104
 Phone: (207) 772-3846
 Fax: (207) 772-1070

Consultant
 MECHANICAL/ELECTRICAL ENGINEER
 Bord, Rao + Athanas Consulting Engineers, LLC
 The Arsenal on the Charles
 311 Arsenal Street
 Watertown, MA 02472-5789
 Phone: 617.254.0016
 Fax: 617.924.9339

Consultant
 EQUIPMENT PLANNING
 Gene Burton & Associates
 1893 General George Patton Drive
 Franklin, Tennessee 37067
 Phone: (615) 376-3100
 Fax: (615) 376-3114

Consultant
 CONSTRUCTION MANAGER
 Gilbane Building Company
 7 Jackson Walkway
 Providence, Rhode Island 02903
 Phone: (401) 456-5905
 Fax: (401) 456-5516

Consultant
 FOOD SERVICE
 Inman Foodservice, LLC
 1808 West End Ave, Suite 1400
 Nashville, TN 37203
 Phone: (615) 321-5591
 Fax: (615) 321-5689

It is the responsibility of the Construction Manager/General Contractor and all Sub-Contractors to verify all dimensions and accept conditions of prior work by related trades before proceeding with any work.

Date
 11/10/06 Final-Issued for Construction
 Drawn By

Scale
 1/8" = 1'-0"

Francis

Cauffman

Foley

Hoffmann

Francis Cauffman
 Foley Hoffmann
 Architects Ltd.

2120 Arch Street
 Philadelphia, PA 19103
 215-568-8250

Project Title

Mercy Health Care
 System of Maine

FORE RIVER SHORT
 STAY HOSPITAL



Project Number
 F05-4898

Drawing Title and Number
 ELECTRICAL
 GROUNDING PLAN
 GROUND LEVEL

E7-G

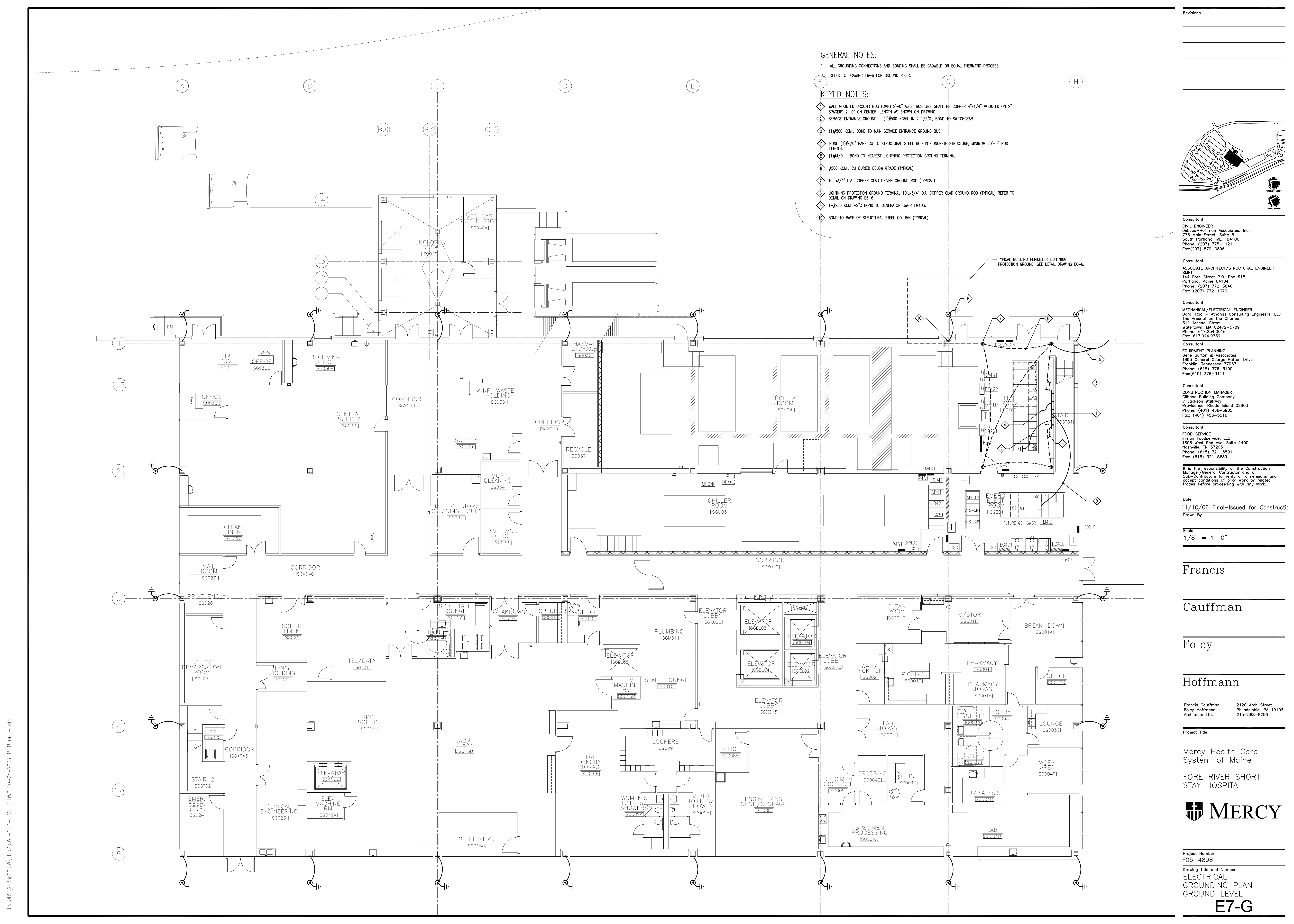
GENERAL NOTES:

1. ALL GROUNDING CONNECTIONS AND BONDING SHALL BE CADWELD OR EQUAL THERMATIC PROCESS.
2. REFER TO DRAWING E6-6 FOR GROUND RISER.

KEYED NOTES:

- 1 WALL MOUNTED GROUND BUS (GMB) 2'-0" A.F.F. BUS SIZE SHALL BE COPPER 4"x1/4" MOUNTED ON 2" SPACERS 2'-0" ON CENTER, LENGTH AS SHOWN ON DRAWING.
- 2 SERVICE ENTRANCE GROUND - (1)#500 KCMIL IN 2 1/2" C, BOND TO SWITCHGEAR
- 3 (1)#500 KCMIL BOND TO MAIN SERVICE ENTRANCE GROUND BUS
- 4 BOND (1)#4/0" BARE CU TO STRUCTURAL STEEL ROD IN CONCRETE STRUCTURE, MINIMUM 20'-0" ROD LENGTH.
- 5 (1)#4/0 - BOND TO NEAREST LIGHTNING PROTECTION GROUND TERMINAL
- 6 #500 KCMIL CU BURIED BELOW GRADE (TYPICAL)
- 7 10'x3/4" DIA. COPPER CLAD DRIVEN GROUND ROD (TYPICAL)
- 8 LIGHTNING PROTECTION GROUND TERMINAL 10'x3/4" DIA. COPPER CLAD GROUND ROD (TYPICAL) REFER TO DETAIL ON DRAWING E6-6.
- 9 1-#250 KCMIL-2" C BOND TO GENERATOR SWGR EM4DS.
- 10 BOND TO BASE OF STRUCTURAL STEEL COLUMN (TYPICAL)

TYPICAL BUILDING PERIMETER LIGHTNING PROTECTION GROUND. SEE DETAIL DRAWING E6-6.



J:\JOBS\2523000\DWG\ELEC\ONE-GND-LEVEL.GDWG 10-24-2006 15:16:06 - oip